



# ATTENDANCE ZONING

SCHOOL BOARD WORKSHOP &  
TOWN HALL MEETING

March 23, 2021

Five Year Enrollment History		
School Year	September Enrollment	Growth %
2015-2016	36,529	
2016-2017	38,488	5.36%
2017-2018	40,239	4.54%
2018-2019	41,937	4.21%
2019-2020	43,740	4.29%
2020-2021	44,688	2.16%

SCHOOL BOARD WORKSHOP &  
TOWN HALL MEETING



# DESIGN AND DECISION-MAKING PROCESS

## General Powers of District School Boards (FS 1001.41)

- Assign Students to schools.

SCHOOL BOARD WORKSHOP &  
TOWN HALL MEETING



# DESIGN AND DECISION MAKING PROCESS

## Examine Student Enrollments

- By Geocodes (Geographic Units of Analysis) which comprise Attendance zones
- New & Current developments
- School's historical data

SCHOOL BOARD WORKSHOP &  
TOWN HALL MEETING





# SJCSD REZONING PARAMETERS (School Board Rule 5.03)

- The plan creates attendance zones that reflect the diversity of the District to the extent practical and consistent with Constitutional requirements.
- Maximum utilization of school facilities. Maximum utilization refers to distributing students among the existing capacity as evenly as possible.
- School size commitments as recommended by school board to the extent practical.
- The plan includes target enrollments that allow for growth and anticipated changing demographics.

SCHOOL BOARD WORKSHOP &  
TOWN HALL MEETING



# SJCSD REZONING PARAMETERS (School Board Rule 5.03)

- The plan keeps neighborhood units in the same attendance zone to the extent practical.
- The plan assigns students to the closest school to the extent practical.
- The plan does not place a transportation burden on any identifiable diversity subgroup (socioeconomic, race/ethnicity, ESOL, or disability).  
Demographic/Socioeconomic balance.
- Maximize Transportation efficiency costs.
- Minimize the disruption to students and families related to attendance zone changes to the extent practical.

SCHOOL BOARD WORKSHOP &  
TOWN HALL MEETING



# ATTENDANCE ZONING GOALS

- Create Attendance Zone for High School III
- Relieve Overcrowding
- Plan with additional growth in mind
- Adjust the Attendance Zone of the Nocatee DRI (West End at Town Center and River Landing)
- Obtain community input
- Ensure quality education for our children

SCHOOL BOARD WORKSHOP &  
TOWN HALL MEETING





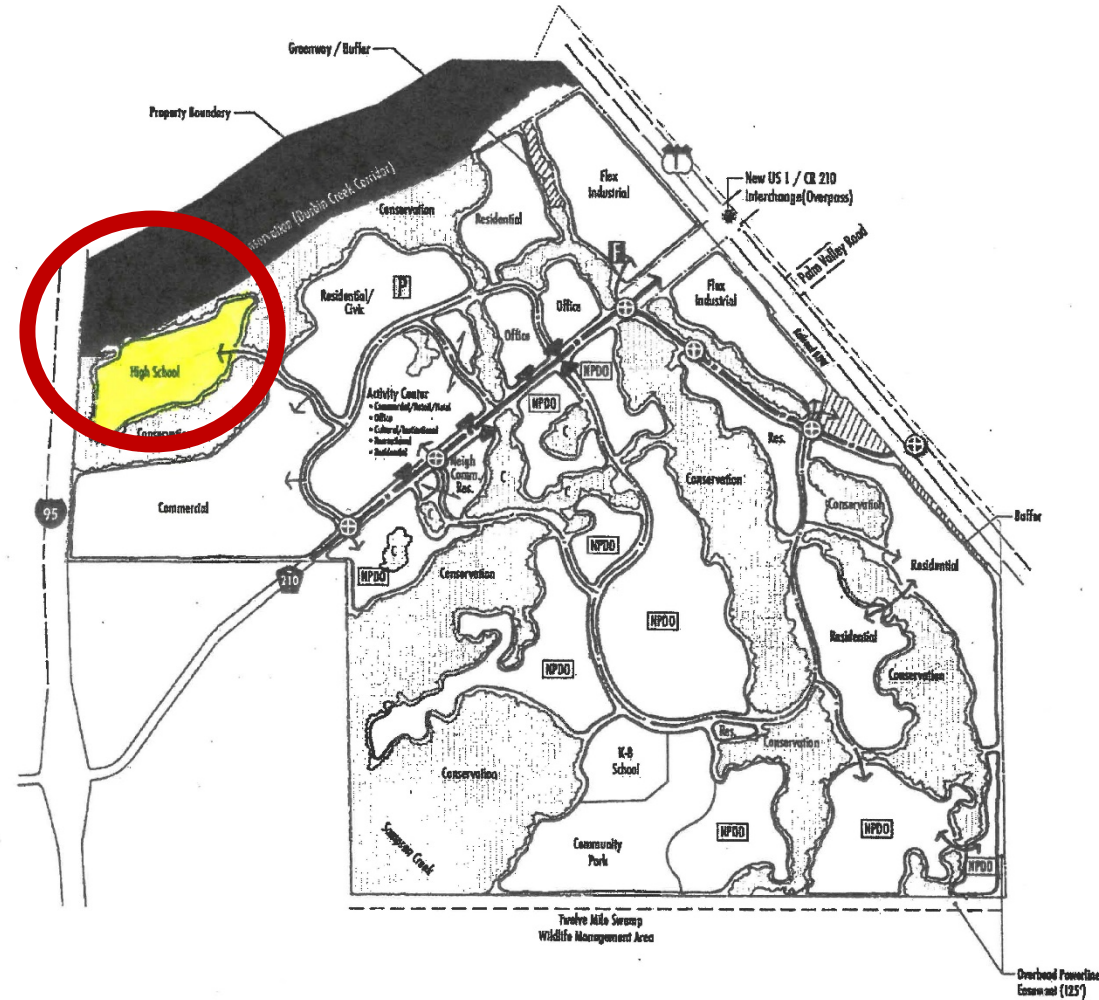
# ATTENDANCE ZONING:

## HIGH SCHOOL III 2022-2023 SY

SCHOOL BOARD WORKSHOP &  
TOWN HALL MEETING

March 23, 2021

# HIGH SCHOOL III LOCATION: TWIN CREEKS



## Substantial Deviation to the **TWIN CREEKS** Development of Regional Impact

### Development Order Exhibit 1 (Sheet 2 of 3) Concept Plan

#### LEGEND

- Local Roadway
- Major Collector Roadway
- ⊕ Full Median Opening (See Note 7)
- Right-in/Right-out Driveway
- F Fire Station Site
- P Sandhill Habitat Preservation (1 Acre)
- Workforce Housing Site (13 Acres Outside DRI Boundary)
- NPDO Not Part of this Development Order



**PROSSER**



April 29, 2014  
111013.02





# ATTENDANCE ZONING: HIGH SCHOOL III







# ATTENDANCE ZONING: HIGH SCHOOL III







# ATTENDANCE ZONING: HIGH SCHOOL III







# ATTENDANCE ZONING: HIGH SCHOOL III







# ATTENDANCE ZONING: HIGH SCHOOL III







# ATTENDANCE ZONING: HIGH SCHOOL III







# ATTENDANCE ZONING: HIGH SCHOOL III







# ATTENDANCE ZONING: HIGH SCHOOL III







# ATTENDANCE ZONING: HIGH SCHOOL III







## ATTENDANCE ZONING: HIGH SCHOOL III





RENDERING: HIGH SCHOOL III





RENDERING: HIGH SCHOOL III



RENDERING: HIGH SCHOOL III





RENDERING: HIGH SCHOOL III







HIGH SCHOOL III — ACCESS ROAD





**HIGH SCHOOL III — SCHOOL SITE**



## High School III:

- Accelerated Academic Programs
- Exceptional Student Education (ESE) Programs
- Career Academies

ATTENDANCE ZONING:  
HIGH SCHOOL III



# HIGH SCHOOL SITUATION

ATTENDANCE ZONING:  
HIGH SCHOOL III





## 2018-2019 First Twenty-Day Enrollment

<u>HIGH SCHOOLS</u>	<u>TOTAL</u>
Bartram Trail High	2,676
Creekside High	2,278
Nease High	2,649
Pedro Menendez High	1,328
Ponte Vedra High	1,821
St. Augustine High	1,786
 TOTAL	 12,538

## 2019-2020 First Twenty-Day Enrollment

<u>HIGH SCHOOLS</u>	<u>TOTAL</u>	<u>% CHANGE</u>
Bartram Trail High	2,894	8.1%
Creekside High	2,291	0.6%
Nease High	2,905	9.7%
Pedro Menendez High	1,379	3.8%
Ponte Vedra High	1,864	2.4%
St. Augustine High	1,893	6.0%
 TOTAL	 13,226	 5.5%

# ATTENDANCE ZONING: HIGH SCHOOL III



## 2019-2020 First Twenty-Day Enrollment

<u>HIGH SCHOOLS</u>	<u>TOTAL</u>
Bartram Trail High	2,894
Creekside High	2,291
Nease High	2,905
Pedro Menendez High	1,379
Ponte Vedra High	1,864
St. Augustine High	1,893
 TOTAL	 13,226

## 2020-2021 First Twenty-Day Enrollment

<u>HIGH SCHOOLS</u>	<u>TOTAL</u>	<u>% CHANGE</u>
Bartram Trail High	3,090	6.7%
Creekside High	2,381	3.9%
Nease High	3,119	7.4%
Pedro Menendez High	1,475	6.9%
Ponte Vedra High	1,916	2.7%
St. Augustine High	1,856	-1.9%
 TOTAL	 13,837	 4.6%

# ATTENDANCE ZONING: HIGH SCHOOL III



## 2008-2009 First Twenty-Day Enrollment

<u>HIGH SCHOOLS</u>	<u>TOTAL</u>
Bartram Trail High	1,805
Nease High	1,618

## 2020-2021 First Twenty-Day Enrollment

<u>HIGH SCHOOLS</u>	<u>TOTAL</u>	<u>% CHANGE</u>
Bartram Trail High	3,090	71.1%
Nease High	3,119	92.7%

# ATTENDANCE ZONING: HIGH SCHOOL III



# New High School Planning

- High School Student Enrollment Growth requires construction
- History of opening high schools  
2 in 2000; → 2 in 2008 → 1 in 2021 → 1 in 2022
- Approximately 2,100 Student Stations; 2,025 Capacity

ATTENDANCE ZONING:  
HIGH SCHOOL III



High School III will open for the 2022-2023 School Year.

- Allen D. Nease High School currently has 3094 9<sup>th</sup>-12<sup>th</sup> grade students and a permanent capacity of 2049. (Overcrowding relief will come via Toci Creek High School.)
- Bartram Trail High School currently has 3084 9<sup>th</sup>-12<sup>th</sup> grade students and a permanent capacity of 1946.

ATTENDANCE ZONING:  
HIGH SCHOOL III



- Allen D. Nease High School and Bartram Trail High School contain large amounts of development pressure within their attendance zones.

## ATTENDANCE ZONING: HIGH SCHOOL III



# ZONING PROPOSALS

## ATTENDANCE ZONING: HIGH SCHOOL III





# HIGH SCHOOL III

## 2022-2023

SCHOOL BOARD WORKSHOP &  
TOWN HALL MEETING

March 23, 2021



## HIGH SCHOOL CONSTRUCTION CALENDAR

- 2019-2020 to 2020-2021 High School HHH Under Construction
  - 2021-2022 High School HHH Opens
- 
- 2020-2021 to 2022-23 HS III Under Construction
  - 2022-2023 High School III Opens

ATTENDANCE ZONING:  
HIGH SCHOOL III



# PLAN A

## ATTENDANCE ZONING: HIGH SCHOOL III



## High School III's Proposed Plan includes

- Areas currently zoned to Bartram Trail HS that are also zoned to Liberty Pines Academy (Geocodes 047221, 047222, 047223, 047224, 047225 & 047226)
- Stonehurst Plantation (Geocode 045110)
- Johns Creek (Geocode 045106)
- Cimarrone (Geocode 045102)
- South Hampton (Geocode 045105)
  
- Areas currently zoned to Nease HS that are located on
  - CR 210 between I-95 and US 1 including Twin Creeks DRI & Sandy Creek (Geocodes 034105 & 034116)
  - RaceTrack Road (Geocodes 044107 & 044108)

ATTENDANCE ZONING:  
HIGH SCHOOL III - **PLAN A**



[illegible]

## HIGH SCHOOL III ATTENDANCE ZONE

Proposed Zone Current Students (9-12):	1 446 students
Attending Zoned School:	1 257 students (87%)
Proposed Zone Current Students (7-9):	1 098 students
Proposed Zone Current Students (7-10):	1 500 students
Proposed Zone w/ 1 yr growth (Opening Yr):	1 281 students (8%)
Proposed Zone w/ 2 yrs growth (2023-2024):	1 855 students (8%)
Proposed Zone w/ 3 yrs growth (2024-2025):	2 003 students (8%)

## ATTENDANCE ZONING: HIGH SCHOOL III - PLAN A





## Bartram Trail High School proposed zone includes

Areas currently zoned to Bartram Trail HS with the exception of:

- Areas currently zoned to Bartram Trail HS that are also zoned to Liberty Pines Academy (Geocodes 047221, 047222, 047223, 047224, 047225 & 047226)
- Stonehurst Plantation (Geocode 045110)
- Johns Creek (Geocode 045106)
- Cimarrone (Geocode 045102)
- South Hampton (Geocode 045105)

ATTENDANCE ZONING:  
HIGH SCHOOL III - **PLAN A**



# BARTRAM TRAIL HIGH SCHOOL PLAN A

## BARTRAM TRAIL HIGH SCHOOL ATTENDANCE ZONE

Proposed Zone Current Students (9-12):	2240 students
Attending Zoned School:	1962 students (88%)
Proposed Zone Current Students (7-9):	1734 students
Proposed Zone Current Students (7-10):	2264 students
Proposed Zone w/ 1 yr growth (Opening Yr):	2887 students (8%)
Proposed Zone w/ 2 yrs growth (2023-2024):	2645 students (8%)
Proposed Zone w/ 3 yrs growth (2024-2025):	2856 students (8%)

ATTENDANCE ZONING:  
HIGH SCHOOL III - **PLAN A**





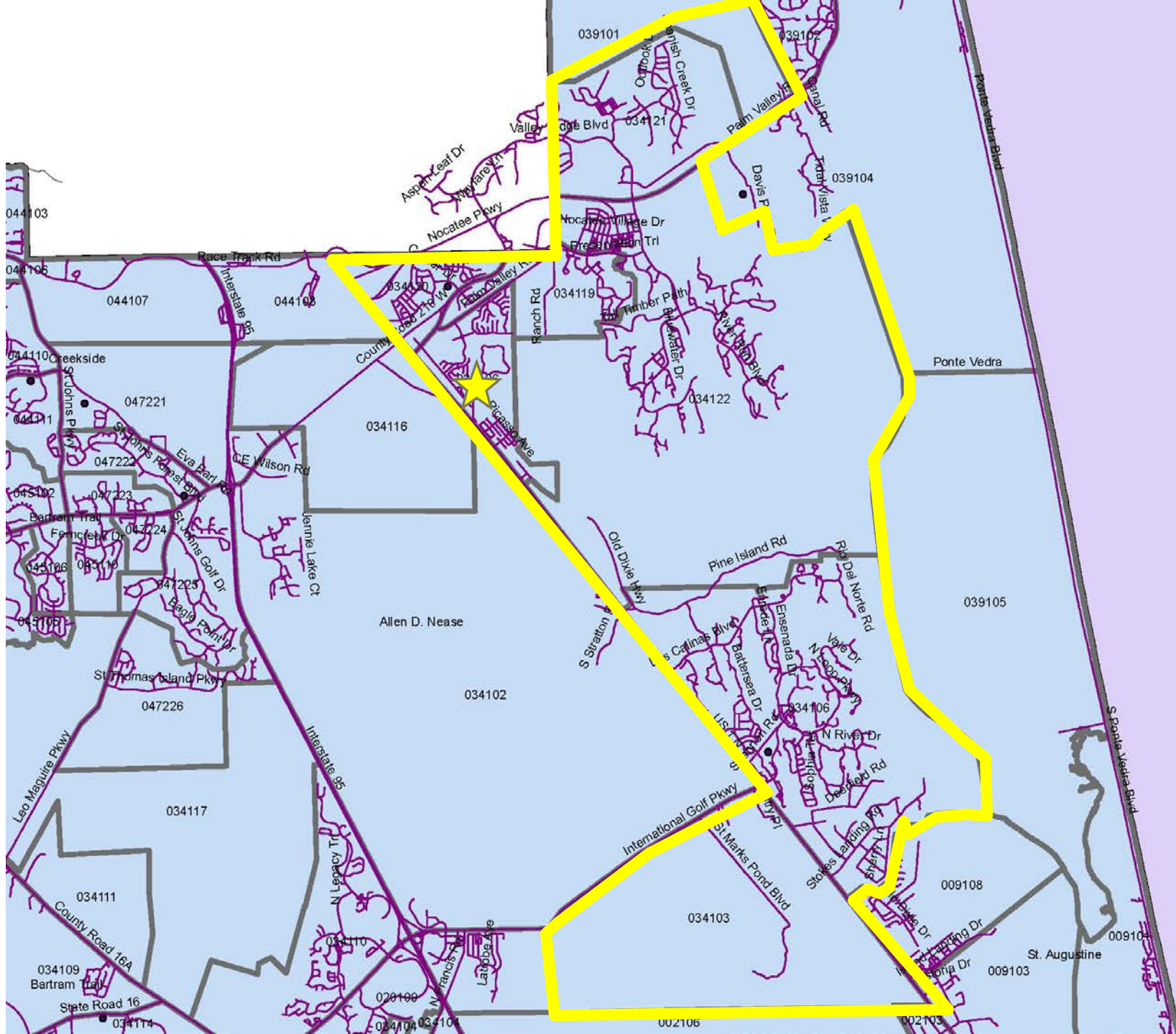
**Allen D. Nease High School** proposed zone includes

Areas currently zoned to Nease HS with the exception of:

- CR 210 between I-95 and US 1 including Twin Creeks DRI & Sandy Creek (Geocodes 034105 & 034116)
- RaceTrack Road (Geocodes 044107 & 044108)

ATTENDANCE ZONING:  
HIGH SCHOOL III - **PLAN A**





# PROPOSED ATTENDANCE ZONE CHANGE:

## ALLEN D. NEASE HIGH SCHOOL **PLAN A**

## NEASE HIGH SCHOOL ATTENDANCE ZONE

Proposed Zone Current Students (9-12):	1852 students
Attending Zoned School:	1421 students (77%)
Proposed Zone Current Students (7-9):	1609 students
Current 10 <sup>th</sup> Graders (Seniors in 21-22)	795 students
Proposed Zone Opening TCHS	2450 students (8%)
Proposed Zone w/ 1 yrs growth (Opening HS III)	1929 students (8%)
Proposed Zone w/ 2 yrs growth	2003 students (8%)
Proposed Zone w/ 3 yrs growth	2163 students (8%)

ATTENDANCE ZONING:  
HIGH SCHOOL III - **PLAN A**





# PLAN B

## ATTENDANCE ZONING: HIGH SCHOOL III



## High School III's Proposed Plan includes

- Areas currently zoned to Bartram Trail HS that are also zoned to Liberty Pines Academy (Geocodes 047221, 047222, 047223, 047224, 047225 & 047226)
- Stonehurst Plantation (Geocode 045110)
- Johns Creek (Geocode 045106)
- Cimarrone (Geocode 045102)
- Areas currently zoned to Nease HS that are located on
  - CR 210 between I-95 and US 1 including Twin Creeks DRI & Sandy Creek (Geocodes 034105 & 034116)
  - RaceTrack Road (Geocodes 044107 & 044108)

ATTENDANCE ZONING:  
HIGH SCHOOL III - **PLAN B**







## HIGH SCHOOL III ATTENDANCE ZONE

Proposed Zone Current Students (9-12):	1196 students
Attending Zoned School:	1050 students (88%)
Proposed Zone Current Students (7-9):	914 students
Proposed Zone Current Students (7-10):	1253 students
Proposed Zone w/ 1 yr growth (Opening Yr):	1066 students (8%)
Proposed Zone w/ 2 yrs growth (2023-2024):	1577 students (8%)
Proposed Zone w/ 3 yrs growth (2024-2025):	1704 students (8%)

## ATTENDANCE ZONING: HIGH SCHOOL III - **PLAN B**



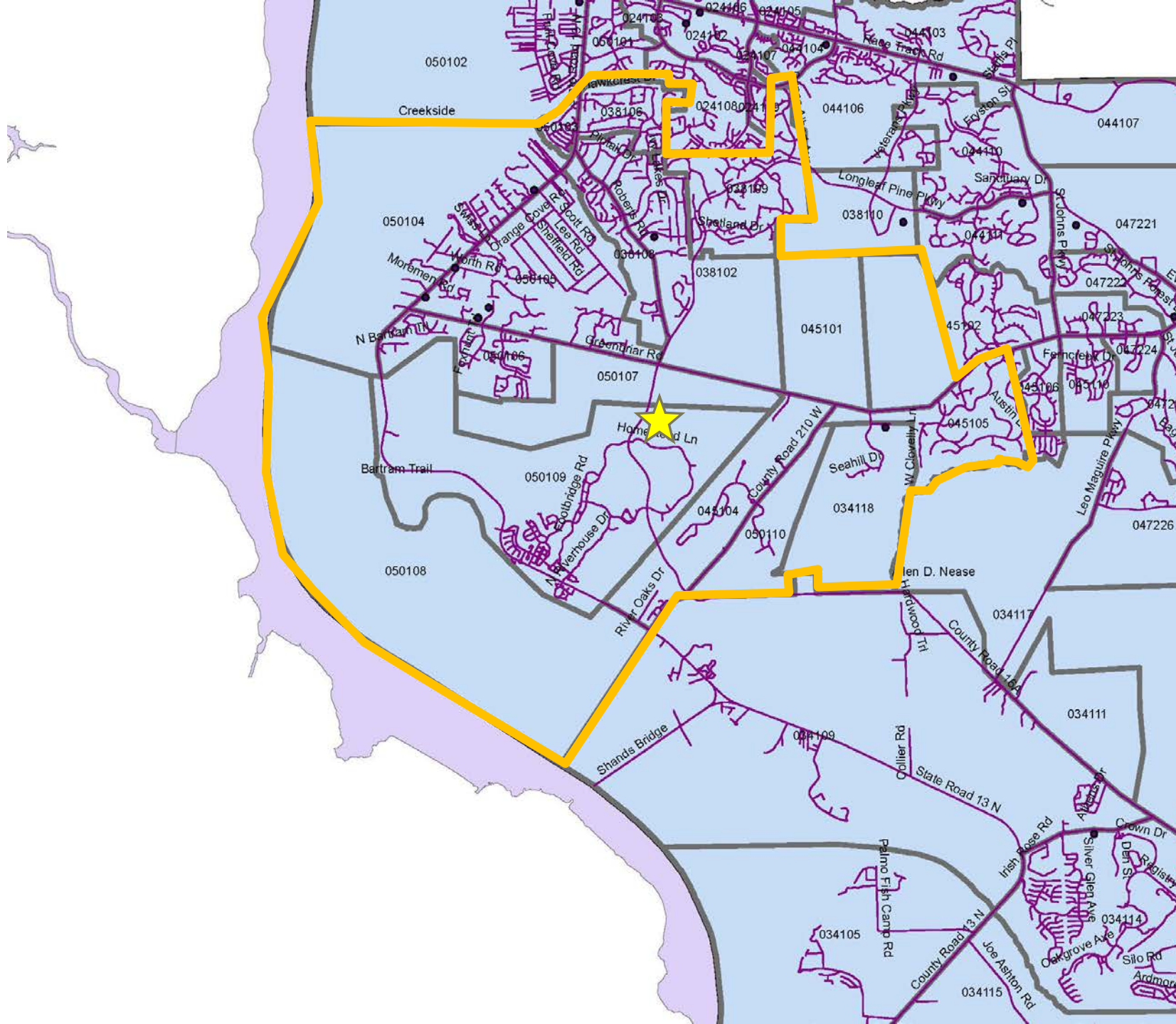
## Bartram Trail High School proposed zone includes

Areas currently zoned to Bartram Trail HS with the exception of:

- Areas currently zoned to Bartram Trail HS that are also zoned to Liberty Pines Academy (Geocodes 047221, 047222, 047223, 047224, 047225 & 047226)
- Stonehurst Plantation (Geocode 045110)
- Johns Creek (Geocode 045106)
- Cimarrone (Geocode 045102)

ATTENDANCE ZONING:  
HIGH SCHOOL III - **PLAN B**





**PROPOSED  
ATTENDANCE  
ZONE  
CHANGE:**

**BARTRAM  
TRAIL HIGH  
SCHOOL  
PLAN B**



## BARTRAM TRAIL HIGH SCHOOL ATTENDANCE ZONE

Proposed Zone Current Students (9-12):	2490 students
Attending Zoned School:	2169 students (87%)
Proposed Zone Current Students (7-9):	1918 students
Proposed Zone Current Students (7-10):	2511 students
Proposed Zone w/ 1 yr growth (Opening Yr):	3101 students (8%)
Proposed Zone w/ 2 yrs growth (2023-2024):	2923 students (8%)
Proposed Zone w/ 3 yrs growth (2024-2025):	3157 students (8%)

ATTENDANCE ZONING:  
HIGH SCHOOL III - **PLAN B**



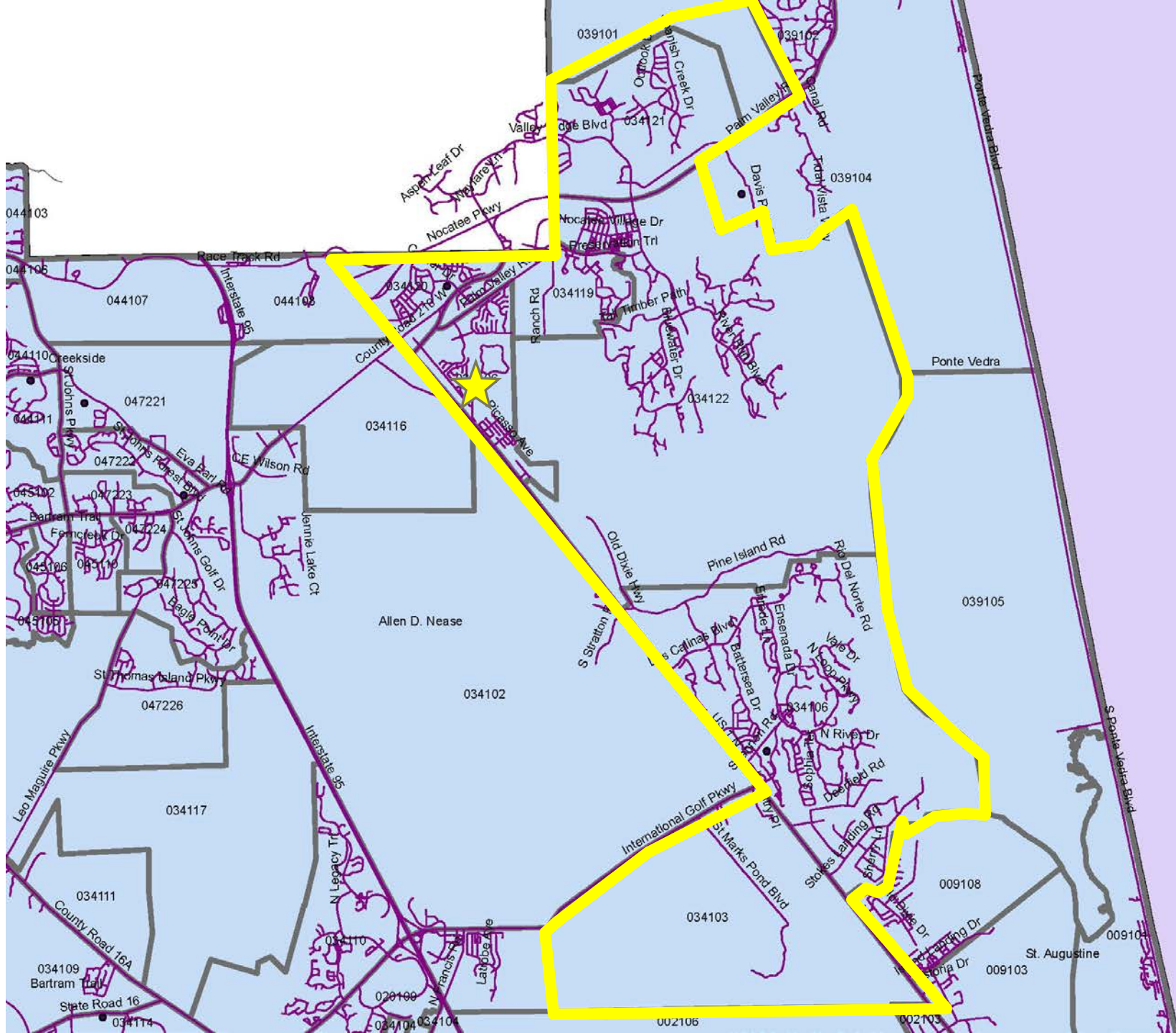
**Allen D. Nease High School** proposed zone includes

Areas currently zoned to Nease HS with the exception of:

- CR 210 between I-95 and US 1 including Twin Creeks DRI & Sandy Creek (Geocodes 034105 & 034116)
- RaceTrack Road (Geocodes 044107 & 044108)

ATTENDANCE ZONING:  
HIGH SCHOOL III - **PLAN B**





# PROPOSED ATTENDANCE ZONE CHANGE:

ALLEN D.  
NEASE HIGH  
SCHOOL  
**PLAN B**



## NEASE HIGH SCHOOL ATTENDANCE ZONE

Proposed Zone Current Students (9-12):	1852 students
Attending Zoned School:	1421 students (77%)
Proposed Zone Current Students (7-9):	1609 students
Current 10 <sup>th</sup> Graders (Seniors in 21-22)	795 students
Proposed Zone Opening TCHS	2450 students (8%)
Proposed Zone w/ 1 yrs growth (Opening HS III)	1929 students (8%)
Proposed Zone w/ 2 yrs growth	2003 students (8%)
Proposed Zone w/ 3 yrs growth	2163 students (8%)

ATTENDANCE ZONING:  
HIGH SCHOOL III - **PLAN B**



# PLAN C

## ATTENDANCE ZONING: HIGH SCHOOL III



## High School III's Proposed Plan includes

- Areas currently zoned to Bartram Trail HS that are also zoned to Liberty Pines Academy (Geocodes 047221, 047222, 047223, 047224, 047225 & 047226)
- Stonehurst Plantation (Geocode 045110)
- Johns Creek (Geocode 045106)
- South Hampton (Geocode 045105)
- Areas currently zoned to Nease HS that are located on
  - CR 210 between I-95 and US 1 including Twin Creeks DRI & Sandy Creek (Geocodes 034105 & 034116)
  - RaceTrack Road (Geocodes 044107 & 044108)

ATTENDANCE ZONING:  
HIGH SCHOOL III - **PLAN C**







## HIGH SCHOOL III ATTENDANCE ZONE

Proposed Zone Current Students (9-12):	1312 students
Attending Zoned School:	1131 students (86%)
Proposed Zone Current Students (7-9):	1009 students
Proposed Zone Current Students (7-10):	1368 students
Proposed Zone w/ 1 yr growth (Opening Yr):	1176 students (8%)
Proposed Zone w/ 2 yrs growth (2023-2024):	1696 students (8%)
Proposed Zone w/ 3 yrs growth (2024-2025):	1832 students (8%)

ATTENDANCE ZONING:  
HIGH SCHOOL III - **PLAN C**



## Bartram Trail High School proposed zone includes

Areas currently zoned to Bartram Trail HS with the exception of:

- Areas currently zoned to Bartram Trail HS that are also zoned to Liberty Pines Academy (Geocodes 047221, 047222, 047223, 047224, 047225 & 047226)
- Stonehurst Plantation (Geocode 045110)
- Johns Creek (Geocode 045106)
- South Hampton (Geocode 045105)

ATTENDANCE ZONING:  
HIGH SCHOOL III - **PLAN C**





# BARTRAM TRAIL HIGH SCHOOL PLAN C

## BARTRAM TRAIL HIGH SCHOOL ATTENDANCE ZONE

Proposed Zone Current Students (9-12):	2374 students
Attending Zoned School:	2088 students (88%)
Proposed Zone Current Students (7-9):	1823 students
Proposed Zone Current Students (7-10):	2396 students
Proposed Zone w/ 1 yr growth (Opening Yr):	2991 students (8%)
Proposed Zone w/ 2 yrs growth (2023-2024):	2804 students (8%)
Proposed Zone w/ 3 yrs growth (2024-2025):	3028 students (8%)

ATTENDANCE ZONING:  
HIGH SCHOOL III - **PLAN C**



**Allen D. Nease High School** proposed zone includes

Areas currently zoned to Nease HS with the exception of:

- CR 210 between I-95 and US 1 including Twin Creeks DRI & Sandy Creek (Geocodes 034105 & 034116)
- RaceTrack Road (Geocodes 044107 & 044108)

ATTENDANCE ZONING:  
HIGH SCHOOL III - **PLAN C**







## NEASE HIGH SCHOOL ATTENDANCE ZONE

Proposed Zone Current Students (9-12):	1852 students
Attending Zoned School:	1421 students (77%)
Proposed Zone Current Students (7-9):	1609 students
Current 10 <sup>th</sup> Graders (Seniors in 21-22)	795 students
Proposed Zone Opening TCHS	2450 students (8%)
Proposed Zone w/ 1 yrs growth (Opening HS III)	1929 students (8%)
Proposed Zone w/ 2 yrs growth	2003 students (8%)
Proposed Zone w/ 3 yrs growth	2163 students (8%)

ATTENDANCE ZONING:  
HIGH SCHOOL III - **PLAN C**





# ATTENDANCE ZONING:

## NOCATEE DRI

## 2021-2022 SY

SCHOOL BOARD WORKSHOP &  
TOWN HALL MEETING

March 23, 2020



# ZONING PROPOSALS for 2021-2022 SY

ATTENDANCE ZONING:  
NOCATEE DRI



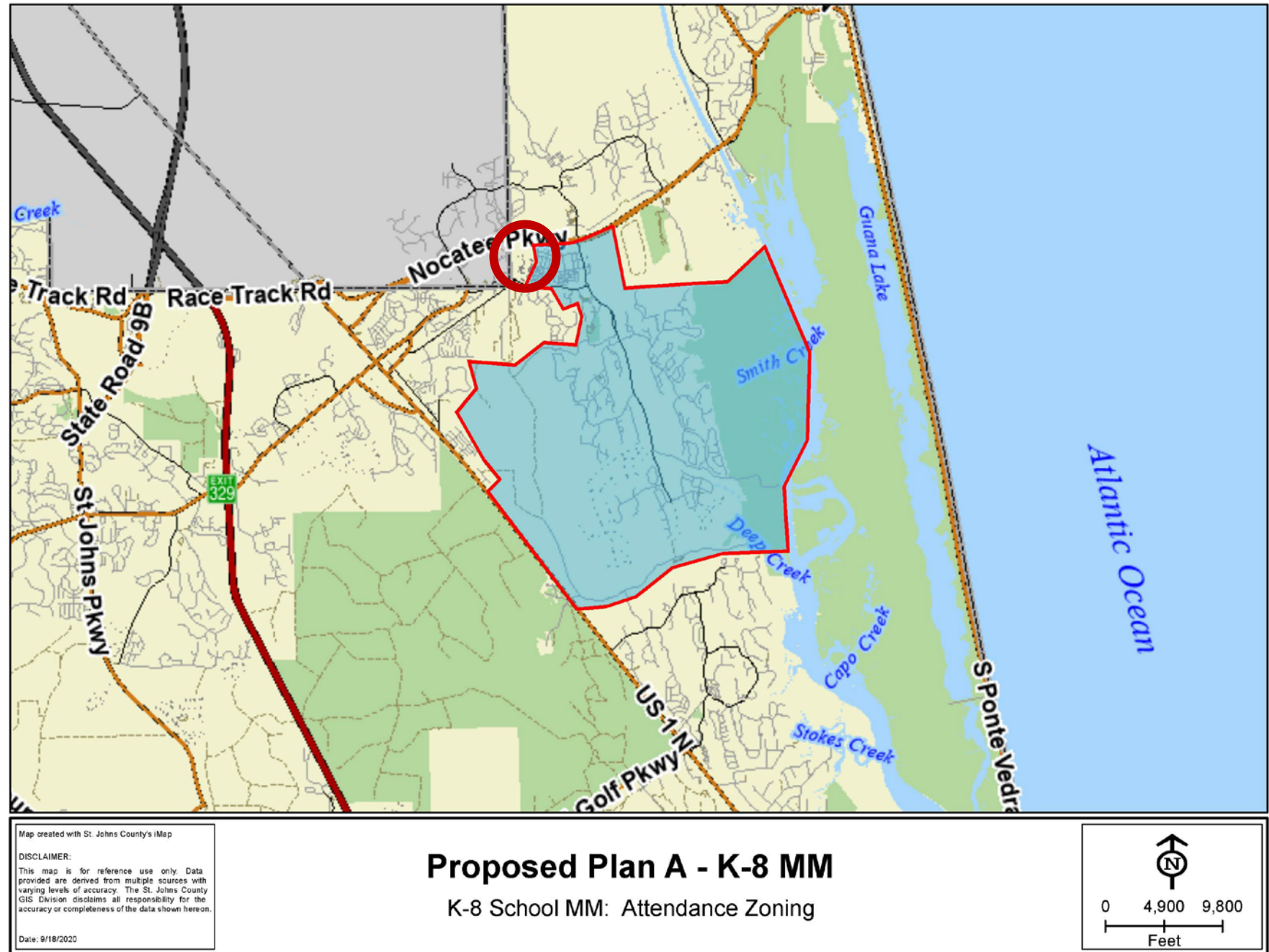
## NOCATEE DRI: West End at Town Center

- Located at the West End of the Nocatee Town Center
- Zoned to Palm Valley Academy (PVA) in the recent Attendance Zone changes for Pine Island Academy (PIA)
- Now proposed to be zoned to PIA to unify the Town Center zoning
- 124 SF and 219 MF dwelling units
- Estimated to generate 105 K-8 students

ATTENDANCE ZONING:  
NOCATEE DRI –  
WEST END AT TOWN CENTER



PROPOSED  
ATTENDANCE  
ZONE  
CHANGE:  
  
WEST END AT  
TOWN CENTER





# PROPOSED PINE ISLAND ACADEMY ATTENDANCE ZONE

Current Students (K-8) 2020-2021 SY	988 students
Proposed Zone Additional Students (Buildout)	105 students
Proposed Zone 2021-2022SY:	1023 students
Proposed Zone 2022-2023 SY:	1295 students

ATTENDANCE ZONING:  
NOCATEE DRI –  
WEST END AT TOWN CENTER



## NOCATEE DRI: River Landing at Twenty Mile

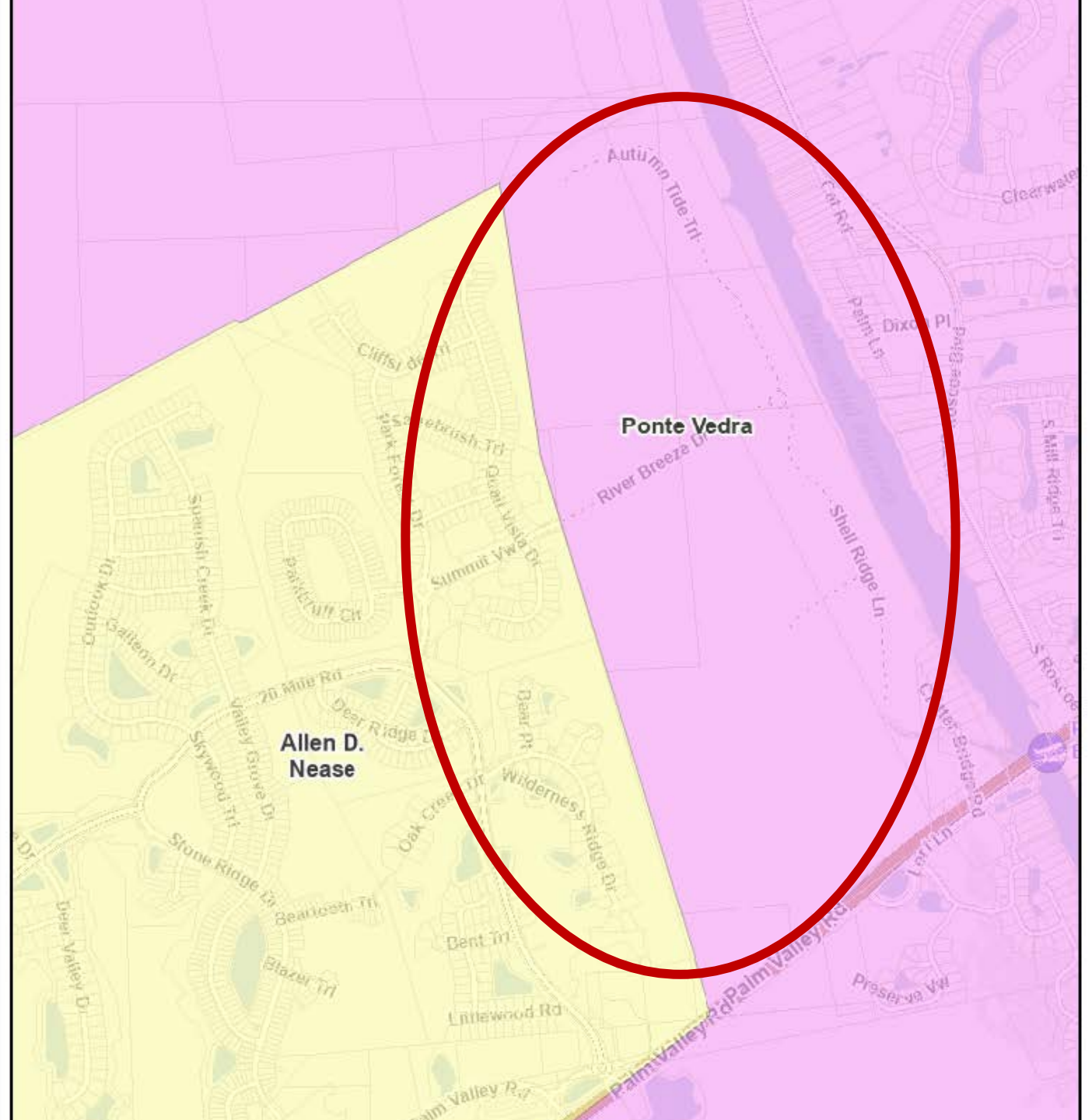
- Located at the Eastern edge of the Twenty Mile neighborhood in Nocatee
- Currently Zoned to Ponte Vedra High School (PVHS). Not included in the original zoning boundary for Nocatee
- Now proposed to be zoned to Allen D. Nease High School (NHS) to unify the Nocatee high school zoning
- 30 SF dwelling units
- Estimated to generate 8 9-12<sup>th</sup> grade students

ATTENDANCE ZONING:  
NOCATEE DRI — RIVER LANDING



# PROPOSED ATTENDANCE ZONE CHANGE:

## RIVER LANDING AT TWENTY MILE





## PROPOSED NEASE ATTENDANCE ZONE

Current Students (9-12) 2020-2021 SY	3119 students
Proposed Zone Additional (9-12) Students	8 students
Proposed Zone 2021-2022SY:	1937 students
Proposed Zone 2022-2023 SY:	2011 students

ATTENDANCE ZONING:  
NOCATEE DRI — RIVER LANDING





# ATTENDANCE ZONING: SCHOOL BOARD WORKSHOP & TOWN HALL MEETING

March 23, 2021

# OPTIONS FOR IN-PERSON PUBLIC INPUT

- March 23<sup>rd</sup>: School Board Workshop & Town Hall Meeting
- April 6<sup>th</sup>: School Board Workshop
- April 13<sup>th</sup> School Board Meeting
- April 27<sup>th</sup>: School Board Workshop

ATTENDANCE ZONING:  
SCHOOL BOARD WORKSHOP &  
TOWN HALL MEETING





# OPTIONS FOR IN-PERSON PUBLIC INPUT

- May 4<sup>th</sup> Discussion and Approval of Advertisement for Attendance Zone Changes (Special SB Mtg)
- May 11<sup>th</sup> School Board Meeting
- May 25<sup>th</sup> School Board Workshop
- June 1<sup>st</sup> School Board Workshop
- June 8<sup>th</sup> Discussion and Approval of Attendance Zone Changes

ATTENDANCE ZONING:  
SCHOOL BOARD WORKSHOP &  
TOWN HALL MEETING



# OPTIONS FOR PUBLIC INPUT

Please visit St. Johns County School District's website:

- **Download the PowerPoint and attendance zone proposal** to view this today.
- **Email** comments and suggestions to our design team, School Board Members and Superintendent.

[www.stjohns.k12.fl.us/zoning](http://www.stjohns.k12.fl.us/zoning)

ATTENDANCE ZONING:  
SCHOOL BOARD WORKSHOP &  
TOWN HALL MEETING



# QUESTIONS/DISCUSSION

---