



ATTENDANCE ZONING 2021-2022 SY



K-8 School MM & PVA

ATTENDANCE ZONING:
2021-2022 SY



ATTENDANCE ZONE -- PALM VALLEY ACADEMY

Twenty Mile Communities

Kelly Pointe (SJC portion)

The Palms (SJC portion)

Oakwood

Willow Cove

The Reserve

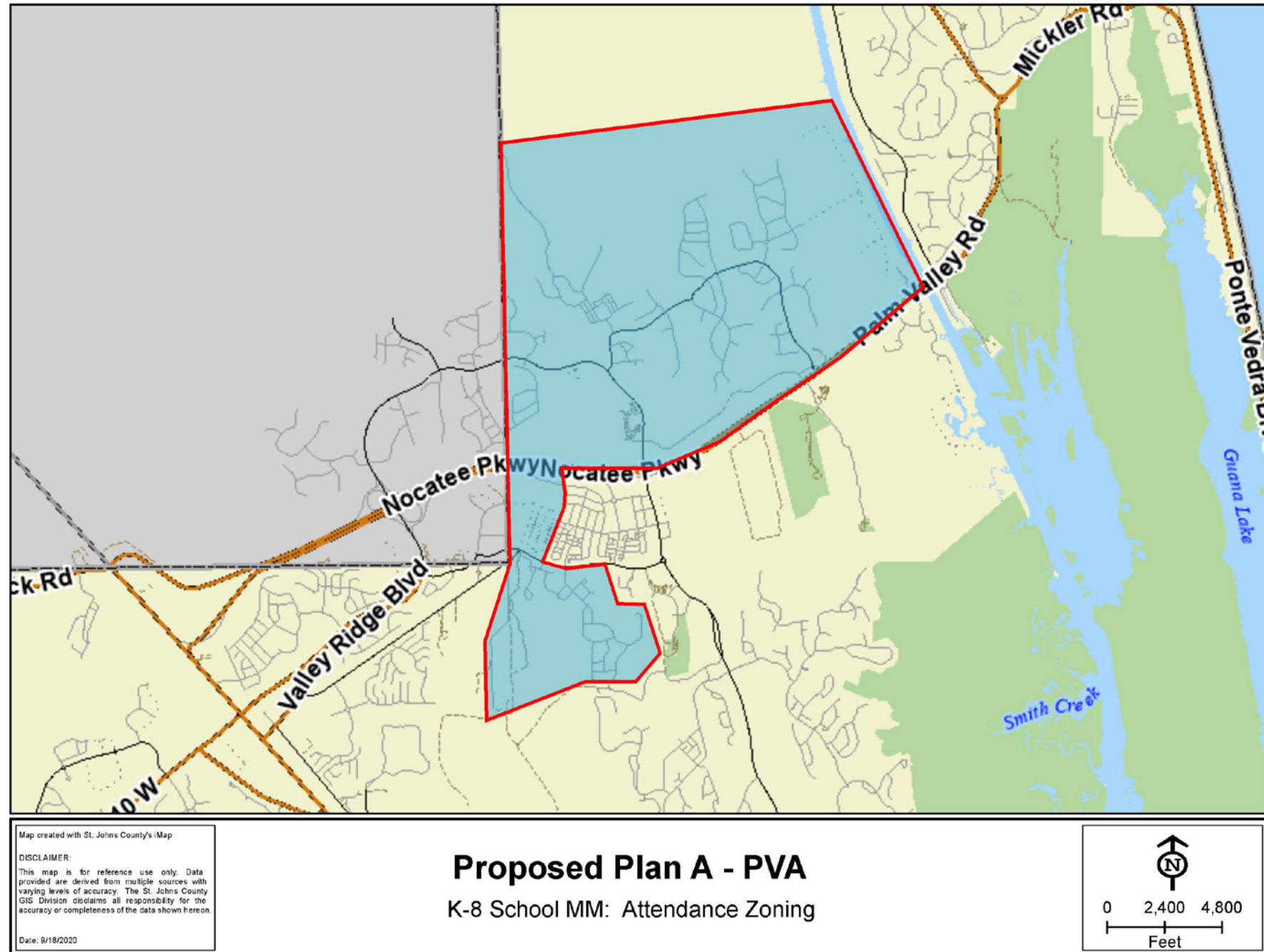
Ranch Road

West End at Town Center

Palm Valley Academy is revised to be comprised of the following Geocodes: 034119 and 034121 and a portion of geocode 034122 to include the following portions of the Nocatee development: Twenty Mile communities, Kelly Pointe (SJC portion), The Palms (SJC portion), Oakwood, Willow Cove, The Reserve and the West End at Town Center. Also included is Ranch Road.

Collectively, these students are currently zoned to Palm Valley Academy. Also included is Ranch Road.

REVISED ATTENDANCE ZONE : PALM VALLEY ACADEMY



ATTENDANCE ZONE—K-8 SCHOOL MM

Crosswater Village
Communities

Coastal Oaks Community

Town Center Communities
(except West End)

Tidewater

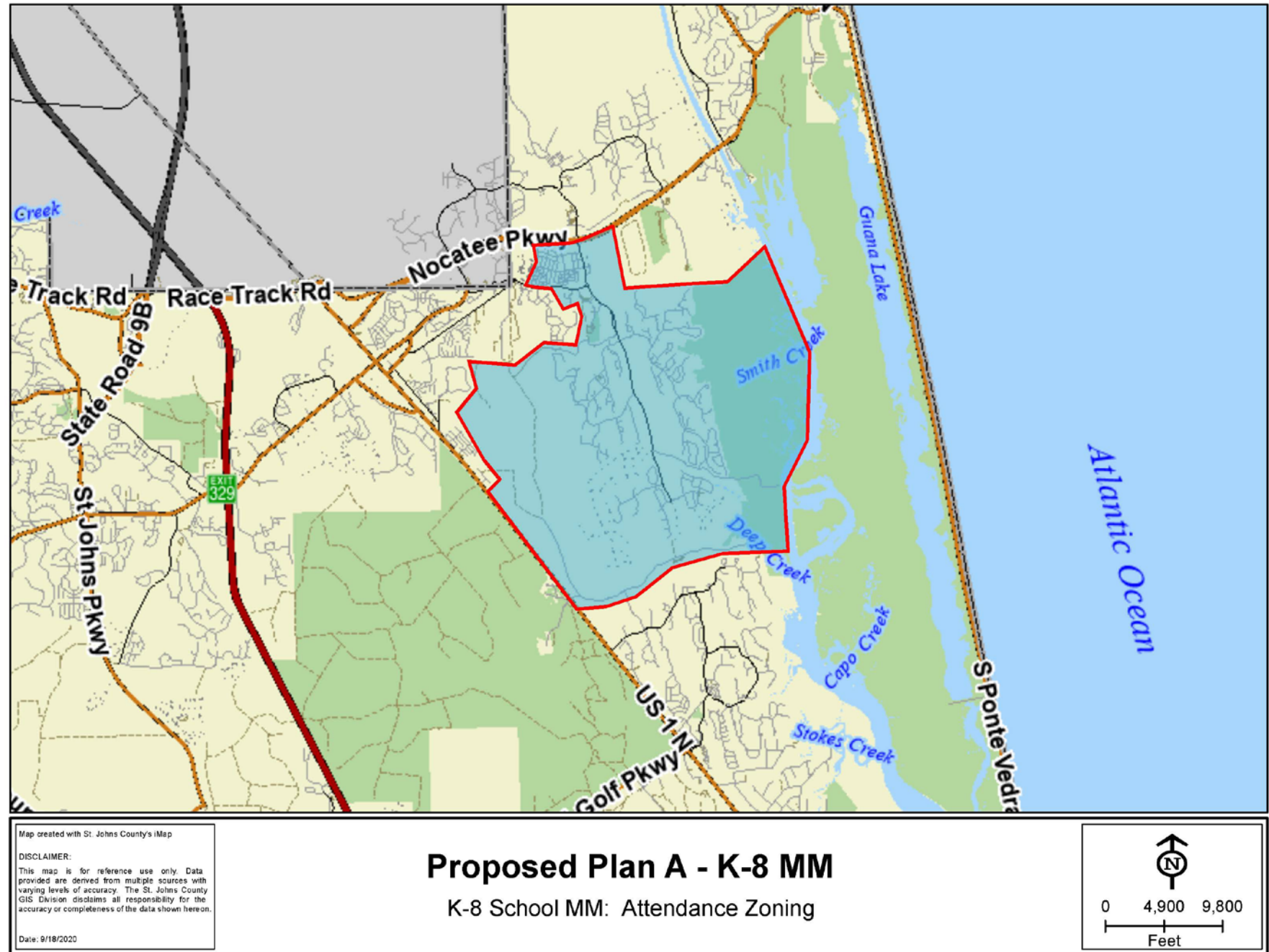
Snowden Village

Pine Island Road

K-8 School MM is proposed to be comprised of a portion of the following Geocode: 034122 to include the following portions of the Nocatee development: Coastal Oaks, Crosswater, Snowden Village, Tidewater and the Town Center (except West End). Also included is Pine Island Road.

Collectively, these students are currently zoned to Palm Valley Academy.

PROPOSED ATTENDANCE ZONE PLAN A: K-8 SCHOOL MM



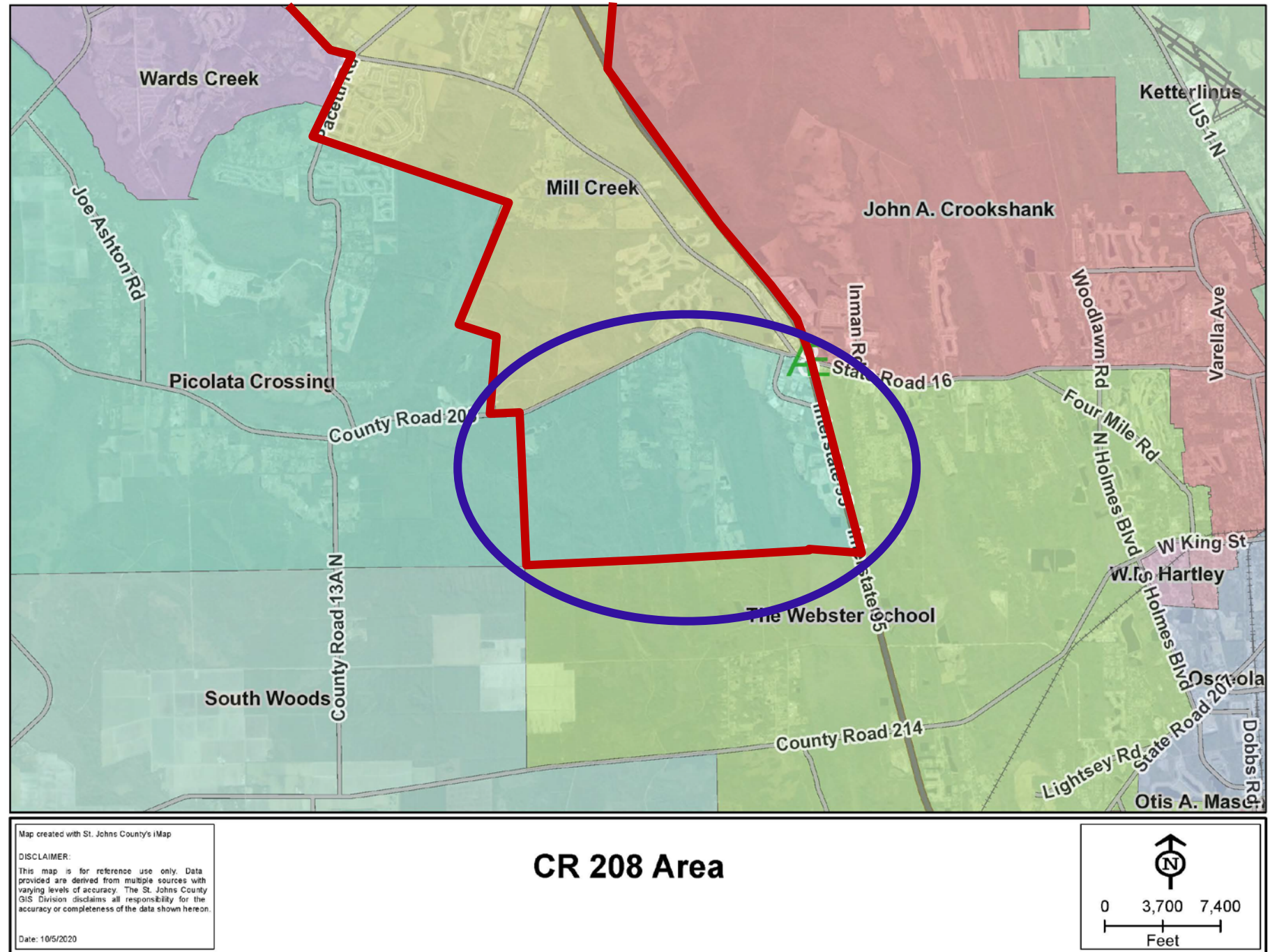
Area along CR 208

ATTENDANCE ZONING:
2021-2022 SY



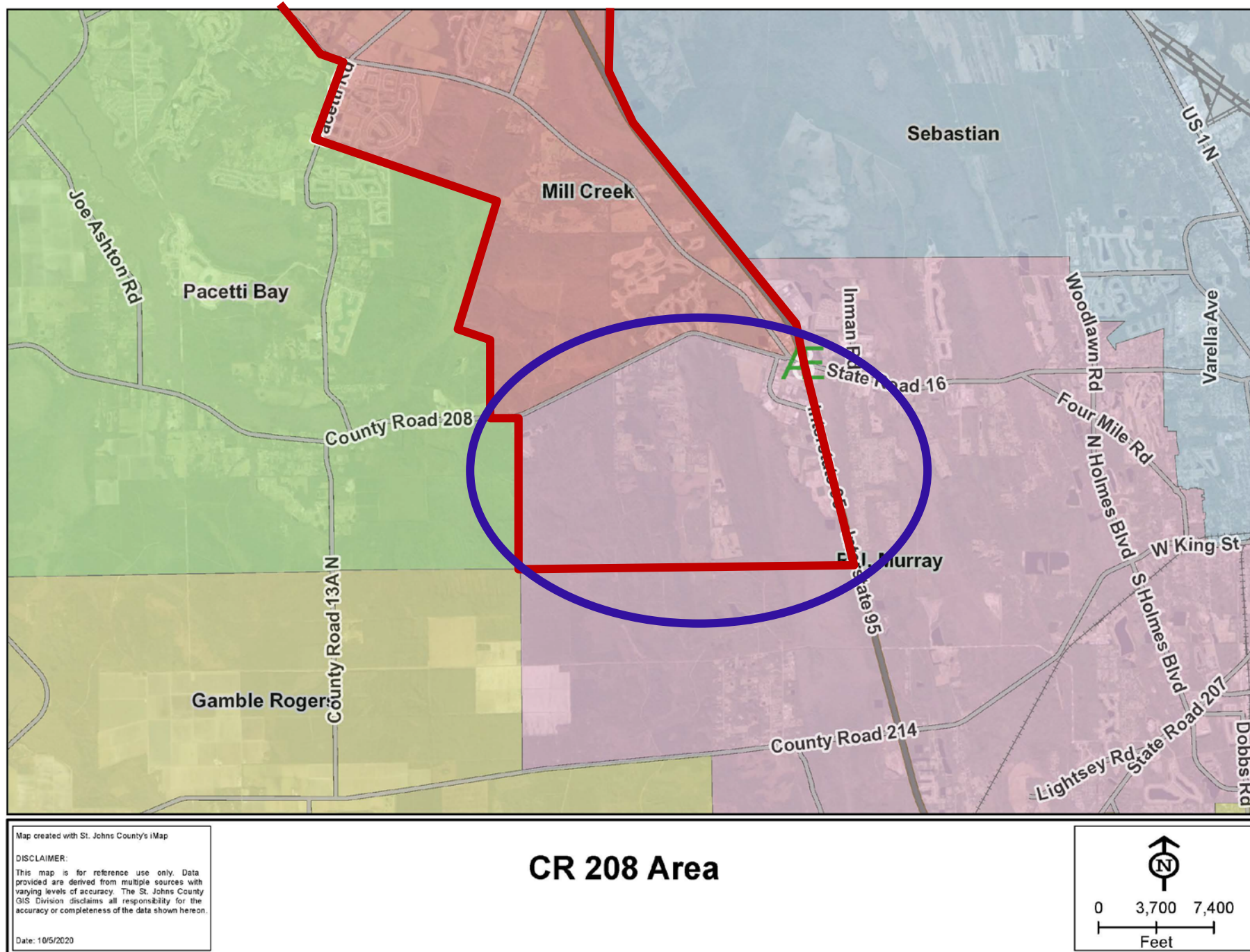
Attendance Zone Changes -- Area along CR 208:

Elementary



Proposed Attendance Zone Changes —Area along CR 208:

Middle School



ATTENDANCE ZONE CHANGES — AREA ALONG CR 208

Mill Creek Academy

Mill Creek Academy is proposed to be amended to add Geocode 052107 (South side of CR 208).

Picolata Crossing
Elementary School

Picolata Crossing Elementary is proposed to be amended to remove Geocode 052107 (South side of CR 208).

R.J. Murray Middle School

R.J. Murray Middle School is proposed to be amended to remove Geocode 052107 (South side of CR 208).