



ATTENDANCE ZONING 2021-2022 SY

SPECIAL SCHOOL BOARD MEETING

November 3, 2020

REQUEST FOR APPROVAL OF ADVERTISEMENT FOR ATTENDANCE ZONING: K-8 SCHOOL MM

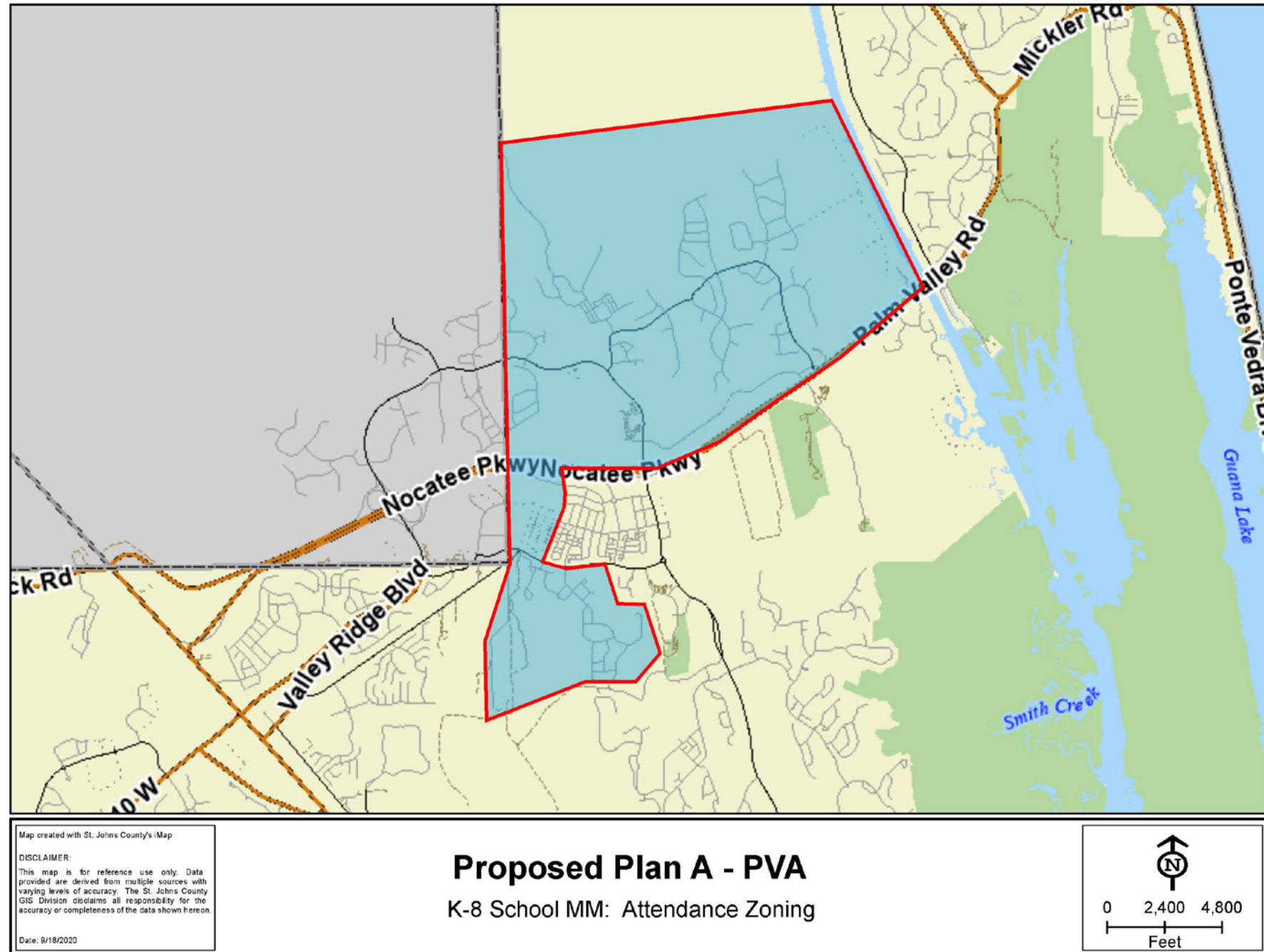
ATTENDANCE ZONING:
2021-2022 SY



K-8 School MM



PROPOSED ATTENDANCE ZONE PLAN A: PALM VALLEY ACADEMY



PROPOSED ATTENDANCE ZONE PLAN A

Palm Valley Academy

Twenty Mile Communities

Kelly Pointe (SJC portion)

The Palms (SJC portion)

Oakwood

Willow Cove

The Reserve

Ranch Road

West End at Town Center

Current K-8 students: 1 413

Currently attending PVA: 1 209

Rising 8th Graders - K-8 School MM: 108

2021-2022 Projection: 1 634 K-8 students (8% + 8th)

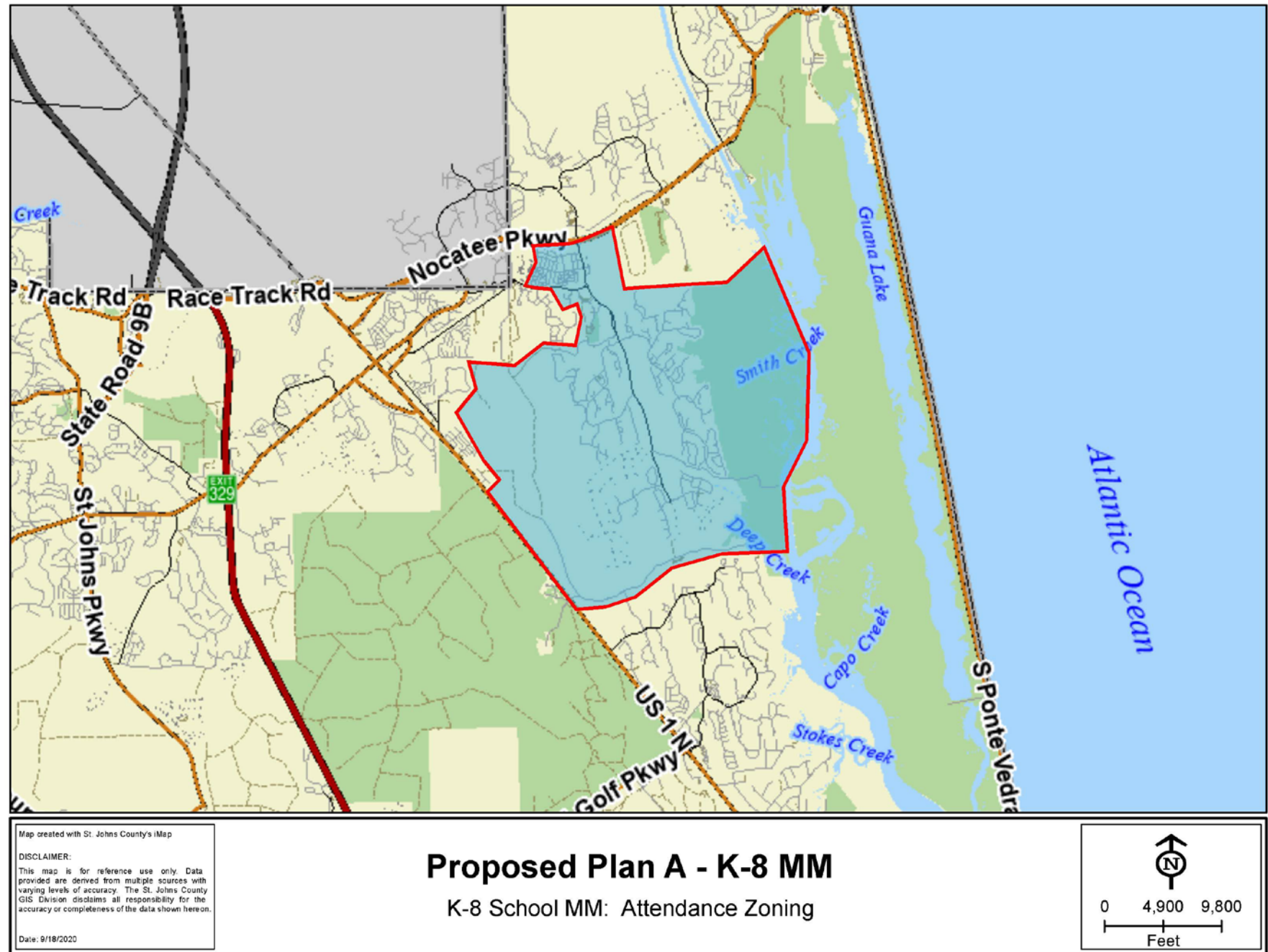
2022-2023 Projection: 1 648 K-8 students (8%)

2023-2024 Projection: 1 754 K-8 students (6%)

Remaining Units to Build: 589

Current Nocatee Student Generation Rate 0.84/du
and 0.69 in K-8 = 341 students

PROPOSED ATTENDANCE ZONE PLAN A: K-8 SCHOOL MM



PROPOSED ATTENDANCE ZONE PLAN A

Crosswater Village Communities

Coastal Oaks Community

Town Center Communities
(except West End)

Tidewater

Snowden Village

Pine Island Road

K-8 School MM

Current K-8 students: 953

Currently attending PVA: 826

Rising 8th Graders - K-8 School MM: 108

2021-2022 Projection: 988 K-7 Students (15% -8th)

2022-2023 Projection: 1260 K-8 students (15%)

2023-2024 Projection: 1449 K-8 students (15%)

Remaining Units to Build: 2047

Current Nocatee Student Generation Rate 0.84/du
and 0.69 in K-8 = 1186 students

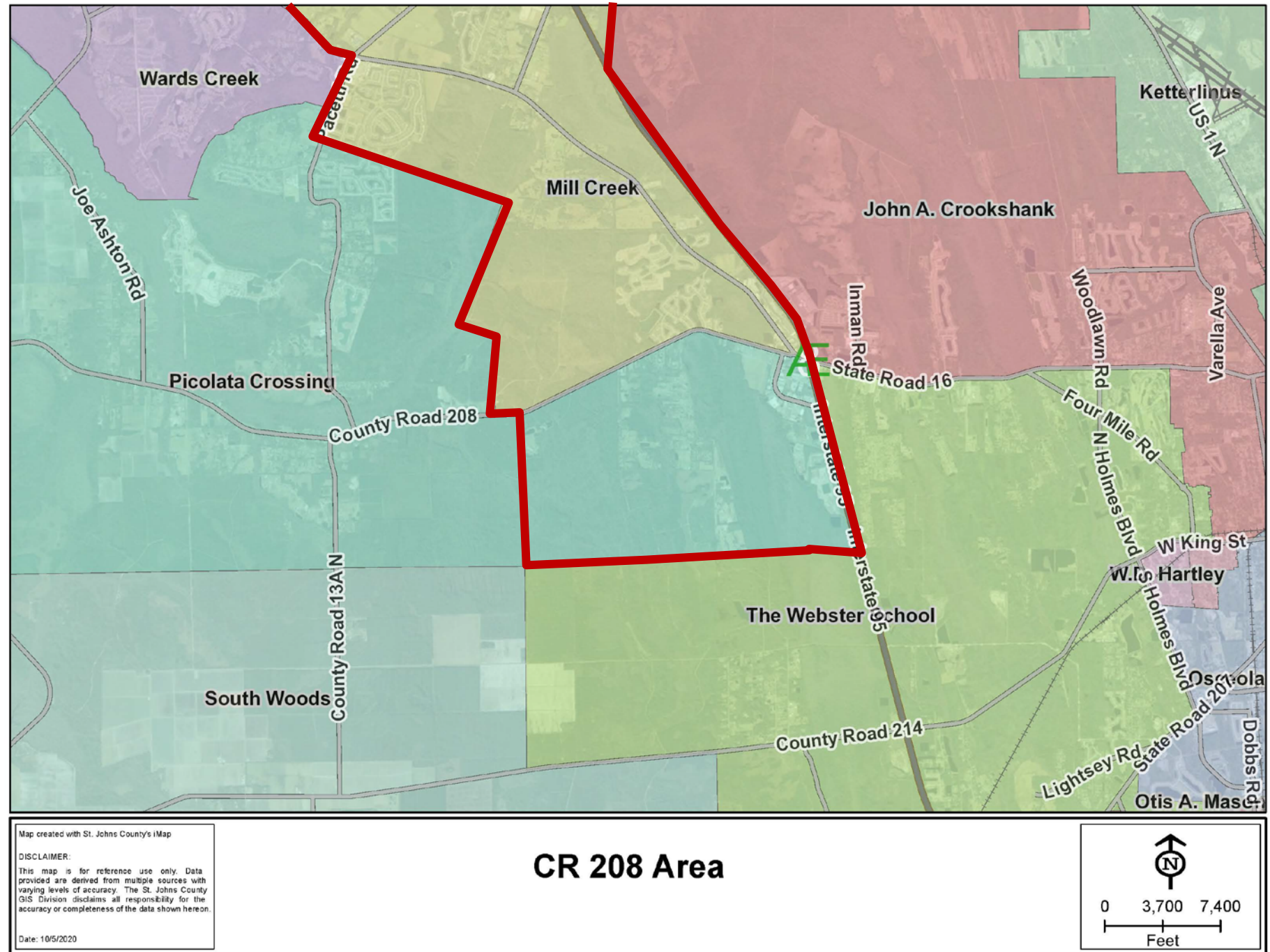
REQUEST FOR APPROVAL OF ADVERTISEMENT FOR ATTENDANCE ZONING: AREA ALONG CR 208

ATTENDANCE ZONING:
2021-2022 SY



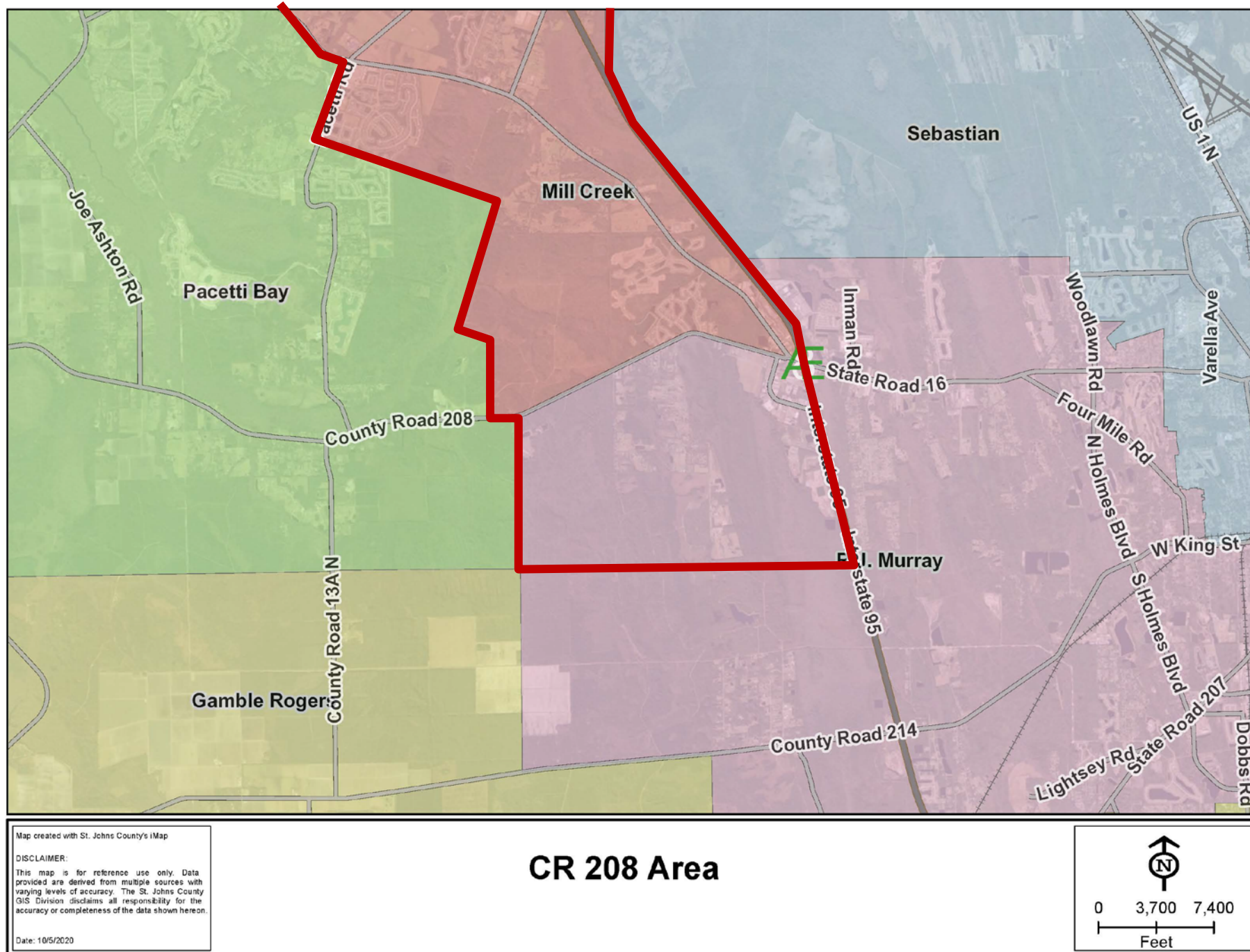
Proposed Attendance Zone Changes -- Area along CR 208:

Elementary



Proposed Attendance Zone Changes —Area along CR 208:

Middle School



PROPOSED ATTENDANCE ZONING CHANGES: AREA ALONG CR 208

- Elementary Students: 19

14 @ PCES and 5 OOZ

Grade	# of Students	Grade	# of Students
K	6	3	2
1	3	4	3
2	3	5	2

- Middle School Students: 7
5 @ MMS and 2 OOZ

Grade	# of Students	Grade	# of Students
6	5	7	2

PROPOSED ATTENDANCE ZONING CHANGES: AREA ALONG CR 208

Mill Creek Academy:

1464 K-8 Students

19 elementary – CR 208

7 middle school – CR 208

1490 K-8 Students

+ 3.5 growth – Southwind

+ 73 growth - 5%

1567 K-8 Students

Picolata Crossing Elementary

Current Enrollment

$$768 - 14 = 754$$

3.8% growth for 2020-2021

R.J. Murray Middle School

Current Enrollment

$$651 - 5 = 646$$

-9.8% growth for 2020-2021

OPTIONS FOR VIRTUAL PUBLIC INPUT

- September 22nd School Board Workshop & Town Hall Meeting
- October 6th School Board Workshop
- October 13th School Board Meeting
- October 20th: School Board Workshop

ATTENDANCE ZONING:
2021-2022 SY



OPTIONS FOR VIRTUAL PUBLIC INPUT

- November 3rd Discussion and Approval of Advertisement for Attendance Zone Changes (Special SB Mtg)
- November 10th School Board Meeting
- November 24th School Board Workshop
- December 1st School Board Workshop
- December 8th Discussion and Approval of Attendance Zone Changes

ATTENDANCE ZONING:
2021-2022 SY



OPTIONS FOR WRITTEN PUBLIC INPUT

Please visit St. Johns County School District's website:

- **Download the PowerPoint and attendance zone proposals.**
- **Email** comments and suggestions to our design team, School Board Members and Superintendent.

www.stjohns.k12.fl.us/zoning

ATTENDANCE ZONING:
2021-2022 SY



QUESTIONS

DISCUSSION

PUBLIC COMMENT





ATTENDANCE ZONING 2021-2022: SPECIAL SCHOOL BOARD MEETING

November 3, 2020