



# ATTENDANCE ZONING 2021-2022 SY

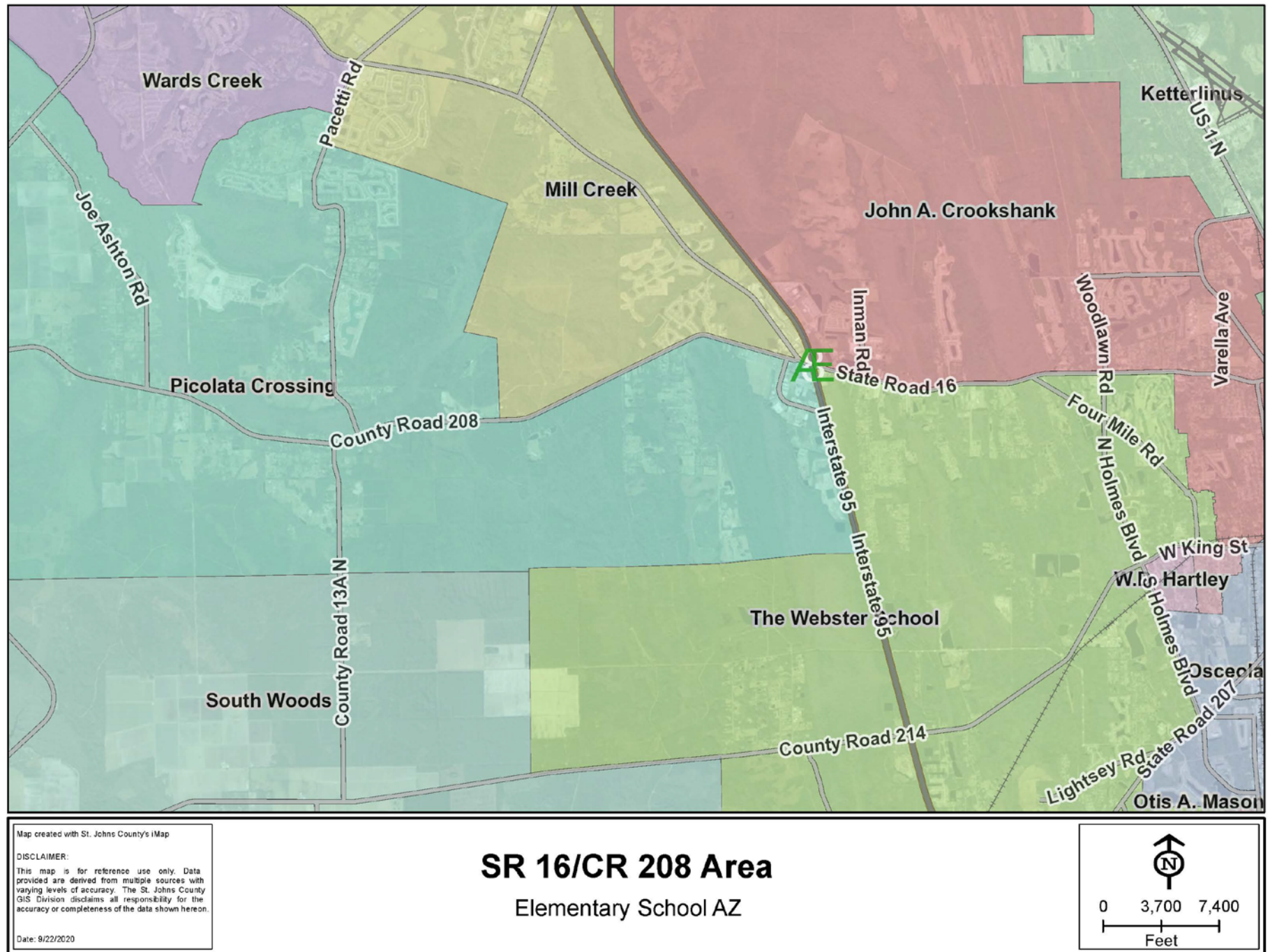
SCHOOL BOARD WORKSHOP

October 20, 2020

# CR 208

## Area:

# Current Elementary Attendance Zones

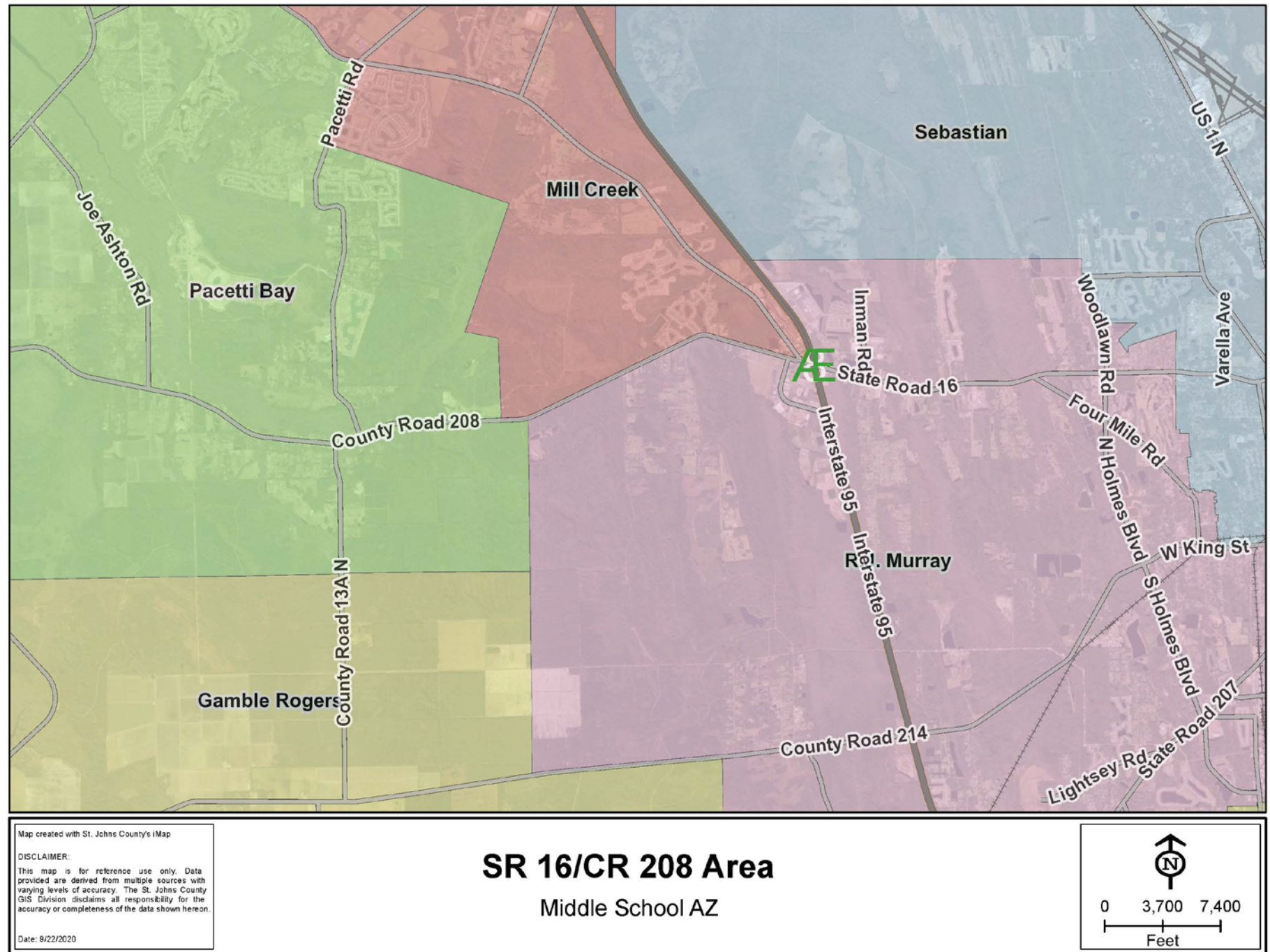




CR 208

Area:

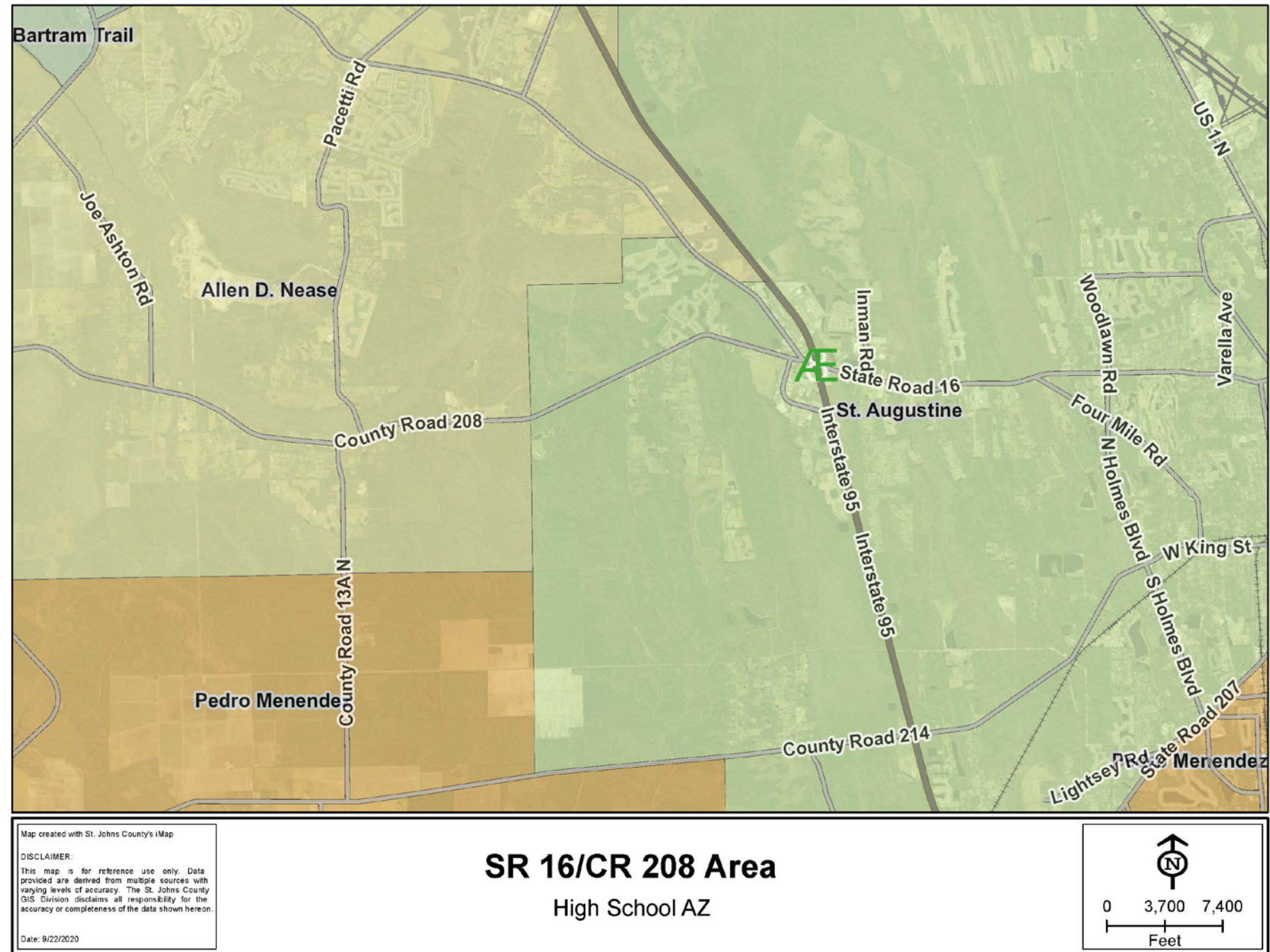
Current  
Middle  
School  
Attendance  
Zones



CR 208

Area:

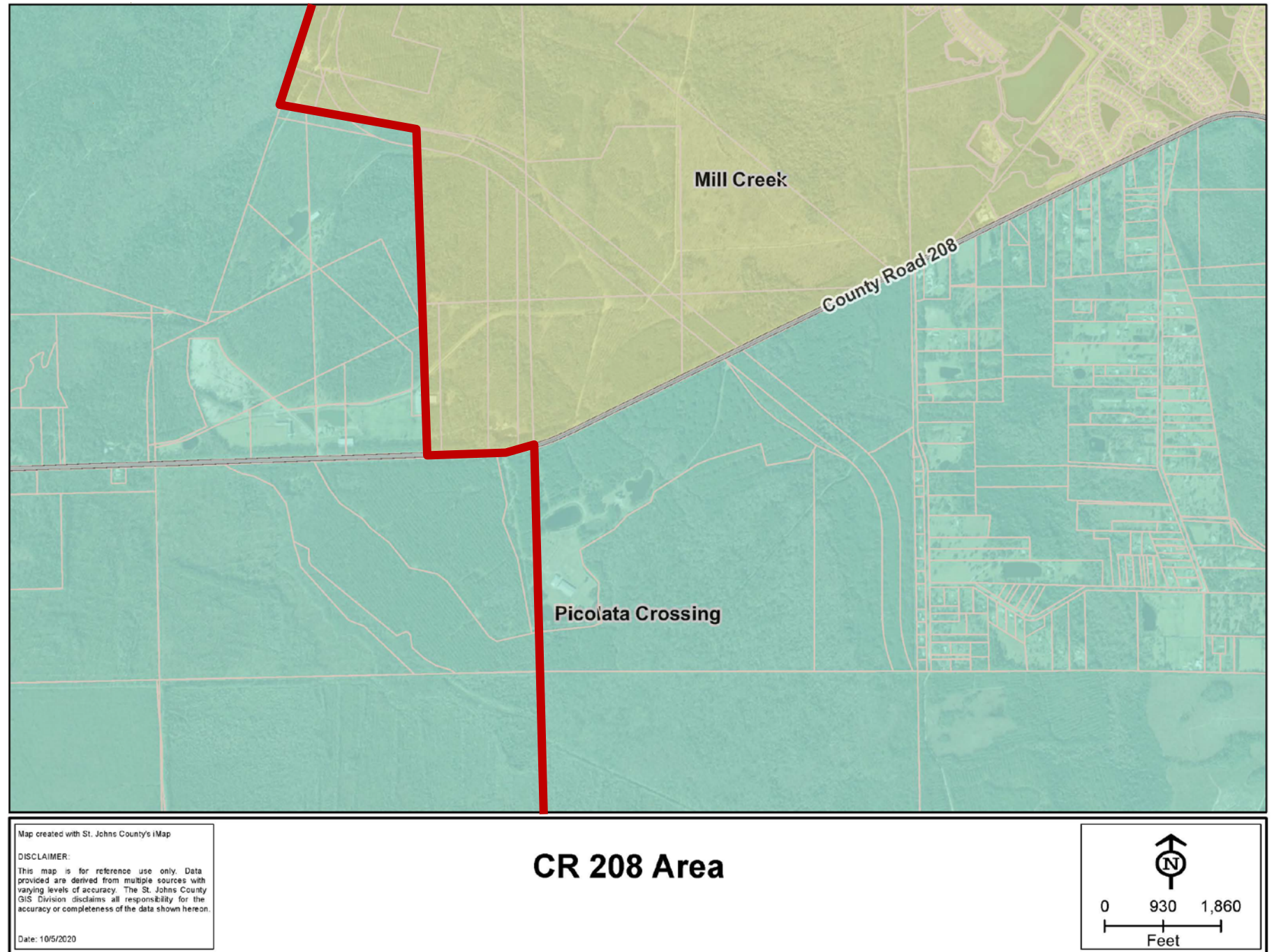
Current  
High  
School  
Attendance  
Zones





Area Under  
Discussion at  
September  
22<sup>nd</sup> and  
October 6<sup>th</sup>  
School Board  
Workshops

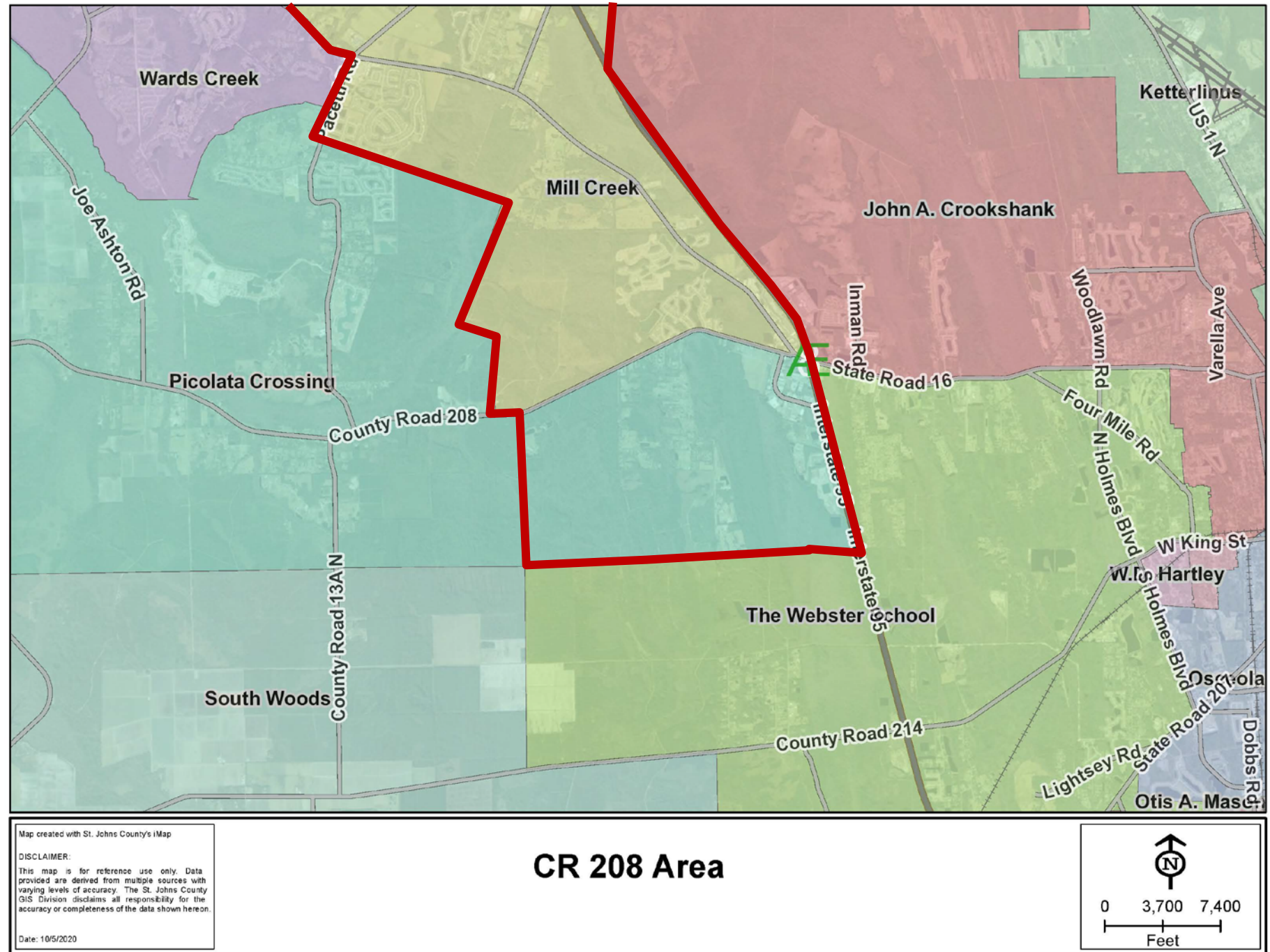
Proposed  
Attendance  
Zone Change





# Proposed Attendance Zone Changes:

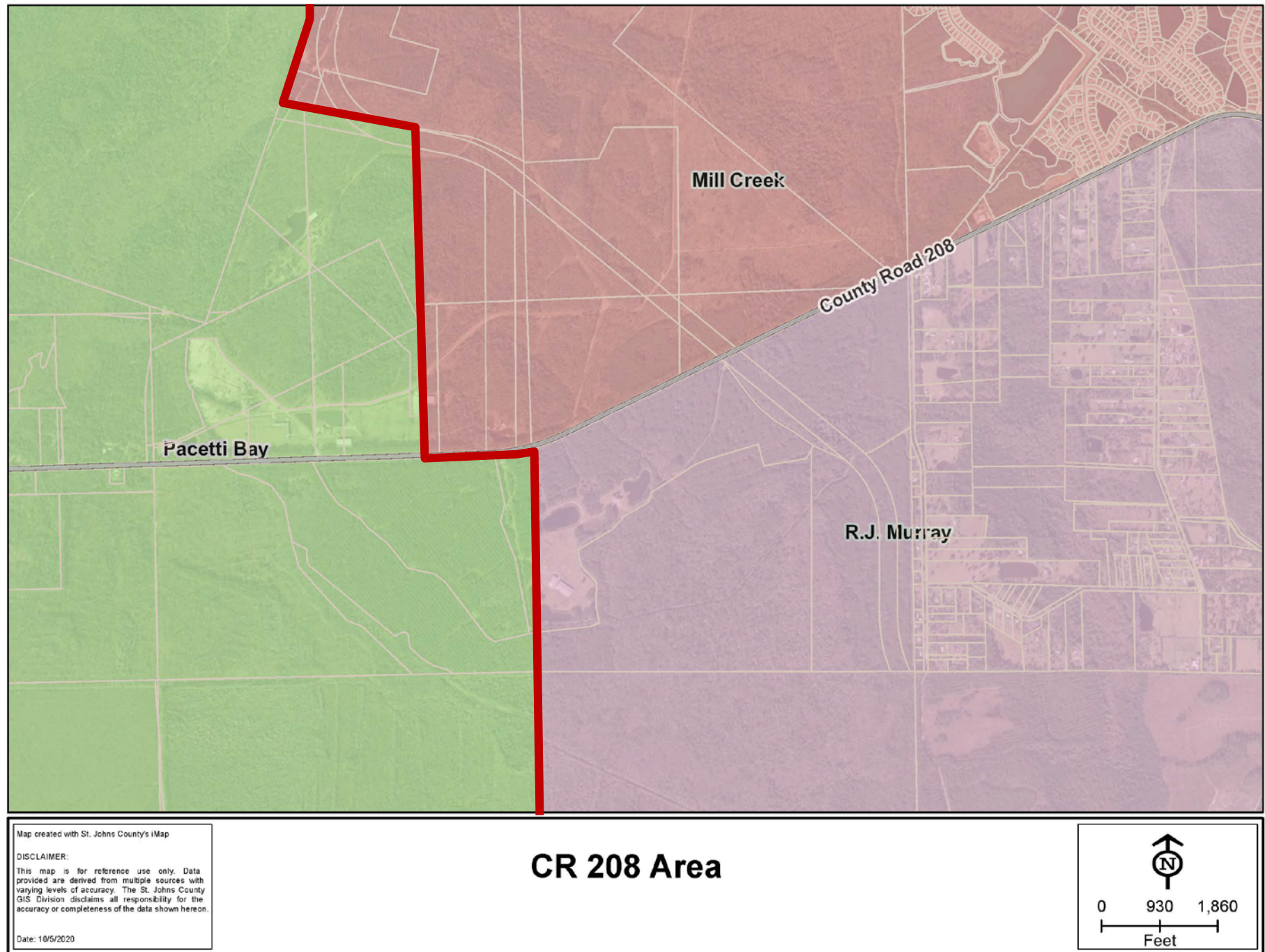
## Elementary





Area Under  
Discussion at  
September  
22<sup>nd</sup> and  
October 6<sup>th</sup>  
School Board  
Workshops

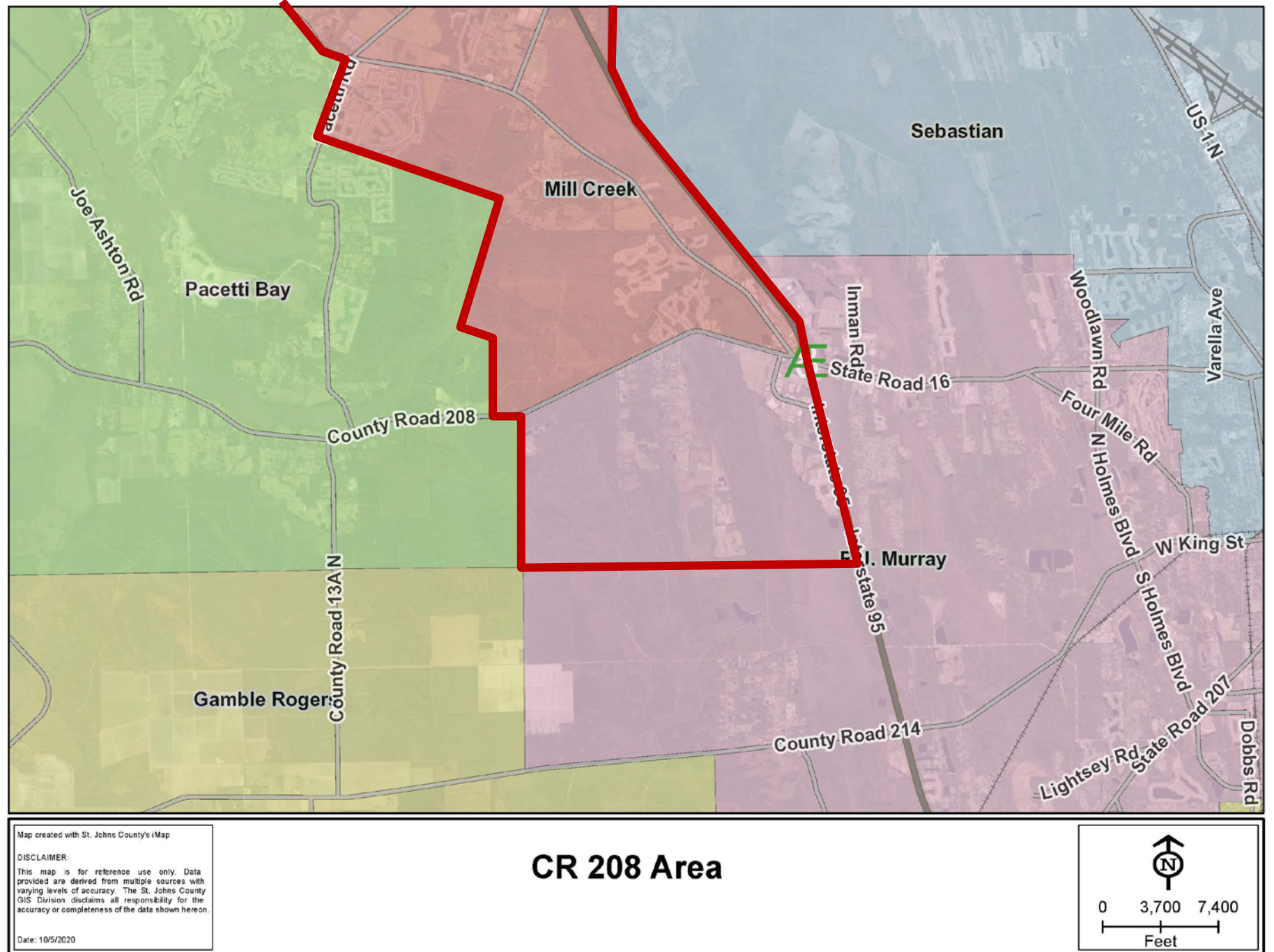
Proposed  
Attendance  
Zone Change





# Proposed Attendance Zone Changes:

## Middle School





# PROPOSED ATTENDANCE ZONING CHANGES

- Elementary Students: 19  
14 @ PCES and 5 OOZ

Grade	# of Students	Grade	# of Students
K	6	3	2
1	3	4	3
2	3	5	2

- Middle School Students: 7  
5 @ MMS and 2 OOZ

Grade	# of Students	Grade	# of Students
6	5	7	2

# PROPOSED ATTENDANCE ZONING CHANGES

## Mill Creek Academy:

1464 K-8 Students

19 elementary – CR 208

7 middle school – CR 208

---

1490 K-8 Students

+ 3.5 growth – Southwind

+ 73 growth - 5%

---

1567 K-8 Students

## Picolata Crossing Elementary

Current Enrollment

$$768 - 14 = 754$$

3.8% growth for 2020-2021

---

## R.J. Murray Middle School

Current Enrollment

$$651 - 5 = 646$$

-9.8% growth for 2020-2021



# QUESTIONS DISCUSSION

---



# ZONING PROPOSALS

## K-8 SCHOOL MM

ATTENDANCE ZONING:  
2021-2022 SY





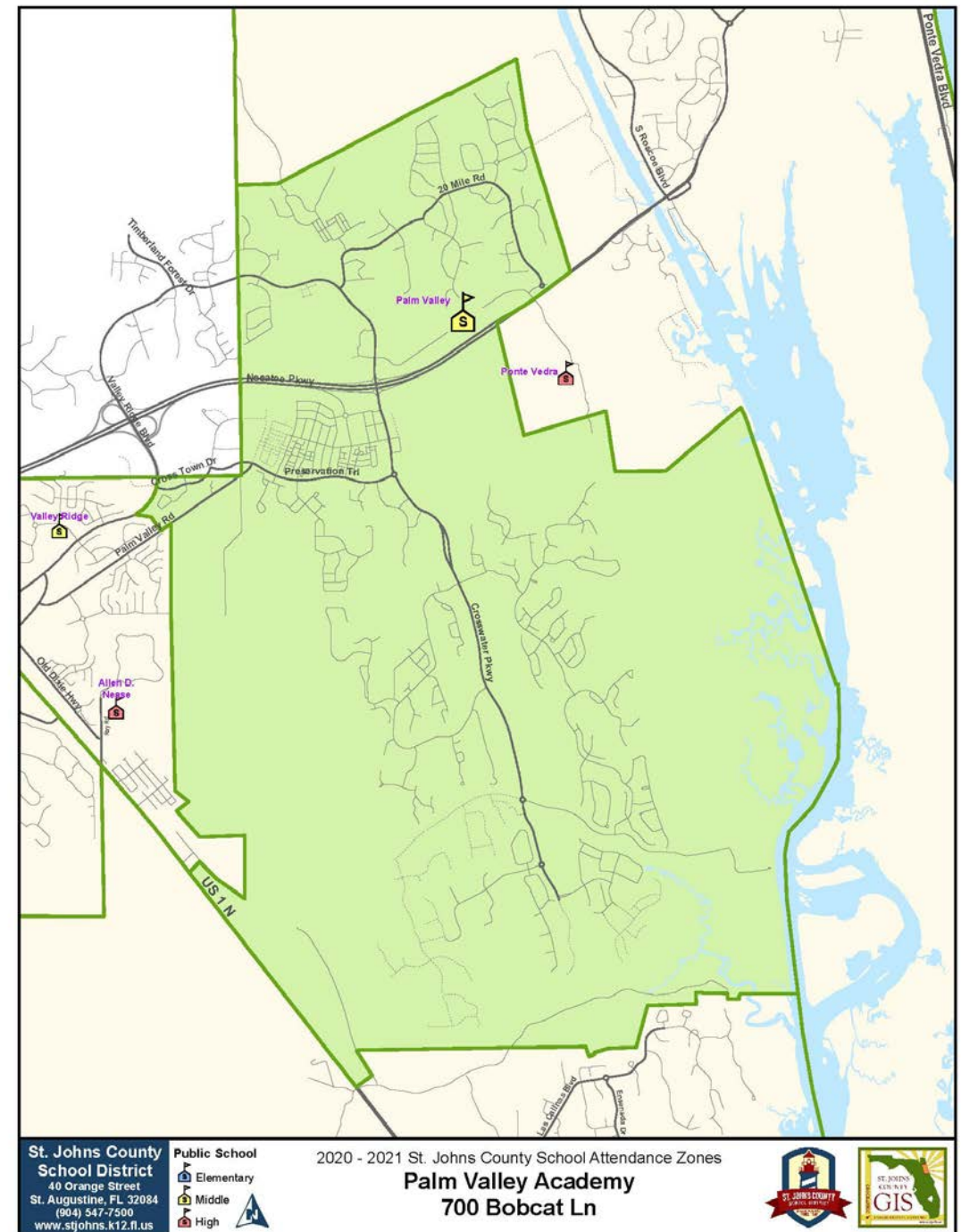
## Common Themes for Attendance Zoning Emails:

- Movement of Town Center to K-8 MM in Plan A. Desire to remain at PVA.
- Tidewater wishes to remain at PVA.
- Movement of Rising 8<sup>th</sup> Graders to K-8 MM.
- Curriculum for 8<sup>th</sup> Graders if go to K-8 MM.

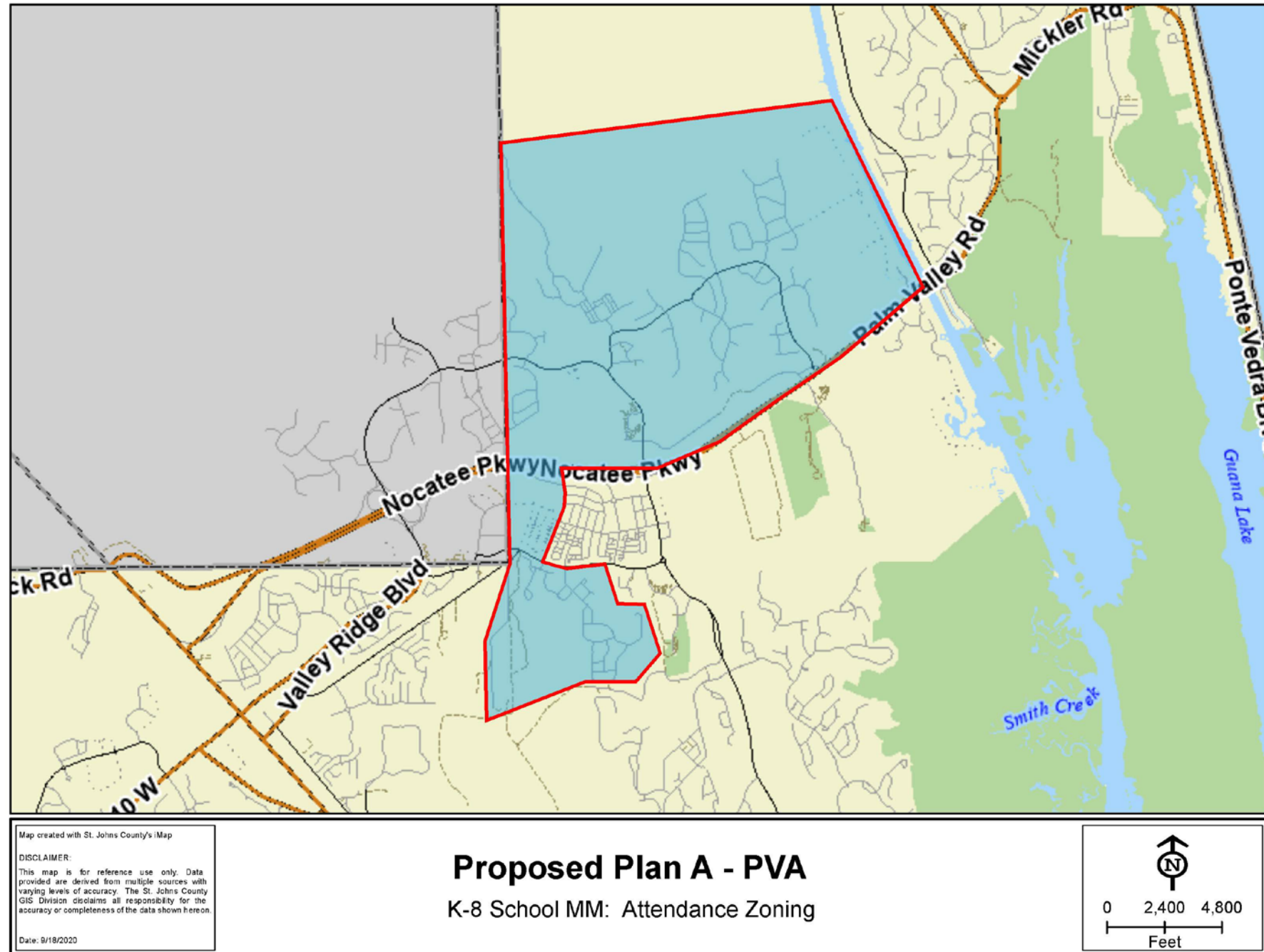
**ZONING PROPOSALS:  
K-8 SCHOOL MM**

October 20, 2020  
School Board Workshop

# CURRENT PVA ATTENDANCE ZONE



# PROPOSED ATTENDANCE ZONE PLAN A: PALM VALLEY ACADEMY





# PROPOSED ATTENDANCE ZONE PLAN A

## Palm Valley Academy

Twenty Mile Communities  
Kelly Pointe (SJC portion)  
The Palms (SJC portion)  
Oakwood  
Willow Cove  
The Reserve  
Ranch Road  
West End at Town Center

Current K-8 students: 1413

Currently attending PVA: 1209

2021-2022 Projection: 1526 K-8 students (8%)

2022-2023 Projection: 1648 K-8 students (8%)

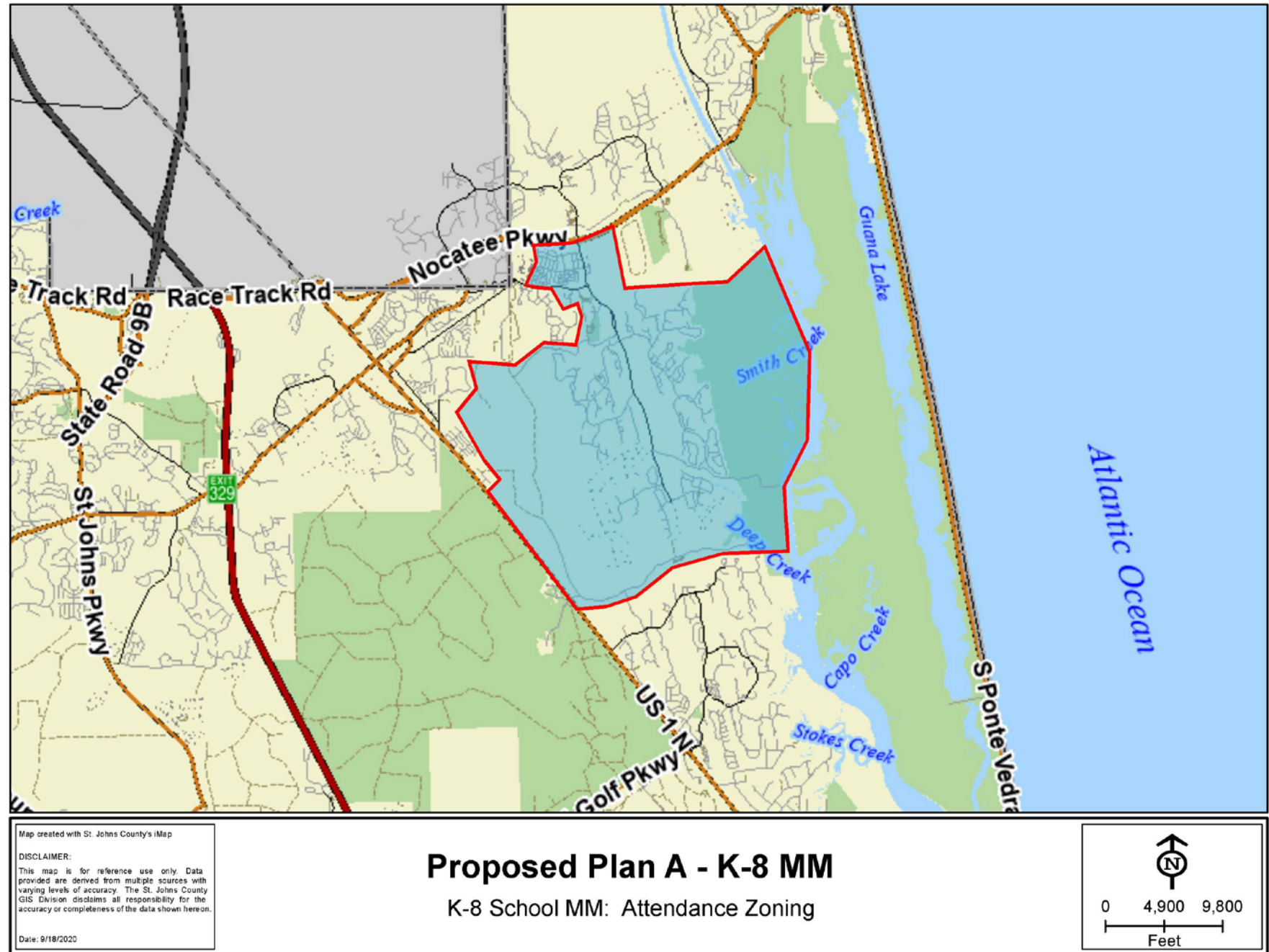
2023-2024 Projection: 1754 K-8 students (6%)

---

Remaining Units to Build: 589

Current Nocatee Student Generation Rate  
0.84/du and 0.69 in K-8 = 341 students

# PROPOSED ATTENDANCE ZONE PLAN A: K-8 SCHOOL MM





# PROPOSED ATTENDANCE ZONE PLAN A

## K-8 School MM

Crosswater Village Communities

Coastal Oaks Community

Town Center Communities (except  
West End)

Tidewater

Snowden Village

Pine Island Road

Current K-8 students: 953

Currently attending PVA: 826

2021-2022 Projection: 1096 K-8 Students (15%)

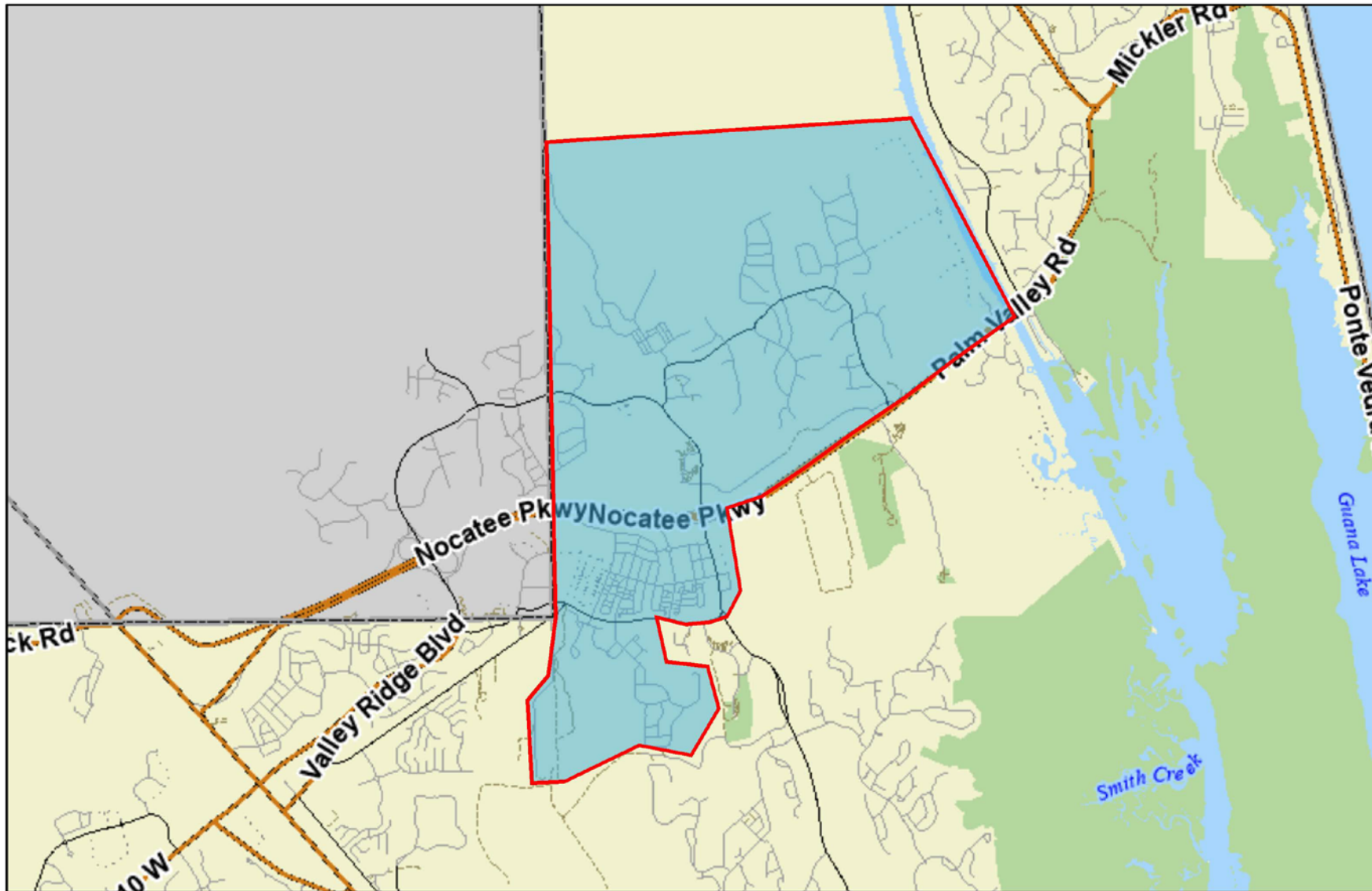
2022-2023 Projection: 1260 K-8 students (15%)

2023-2024 Projection: 1449 K-8 students (15%)

---

Remaining Units to Build: 2047

Current Nocatee Student Generation Rate  
0.84/du and 0.69 in K-8 = 1186 students



# PROPOSED ATTENDANCE ZONE PLAN B:

## PALM VALLEY ACADEMY

Map created with St. Johns County's iMap

**DISCLAIMER:**

This map is for reference use only. Data provided are derived from multiple sources with varying levels of accuracy. The St. Johns County GIS Division disclaims all responsibility for the accuracy or completeness of the data shown hereon.

Date: 9/18/2020

### Proposed Plan B - PVA

K-8 School MM: Attendance Zoning



0 2,400 4,800  
Feet

# PROPOSED ATTENDANCE ZONE PLAN B

## Palm Valley Academy

Twenty Mile Communities

Kelly Pointe (SJC portion)

The Palms (SJC portion)

Oakwood

Willow Cove

The Reserve

Ranch Road

Town Center

Current K-8 students: 1663

Currently attending PVA: 1425

2021-2022 Projection: 1796 K-8 students (8%)

2022-2023 Projection: 1939 K-8 students (8%)

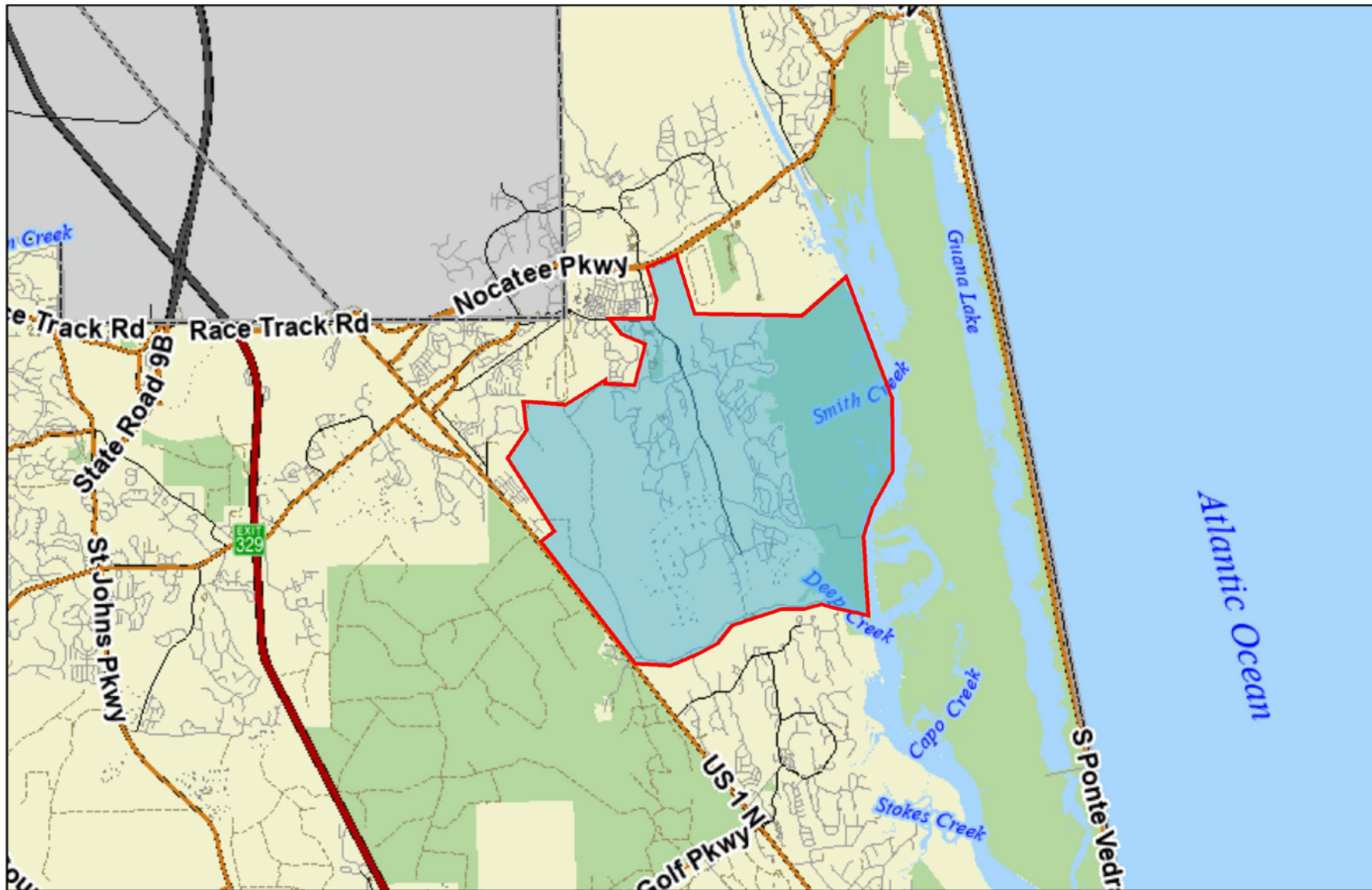
2023-2024 Projection: 2004 K-8 students (3%)

---

Remaining Units to Build: 589

Current Nocatee Student Generation Rate  
0.84/du and 0.69 in K-8 = 341 students





# PROPOSED ATTENDANCE ZONE PLAN B: K-8 SCHOOL MM

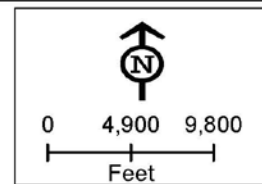
Map created with St. Johns County's iMap

**DISCLAIMER:**  
This map is for reference use only. Data provided are derived from multiple sources with varying levels of accuracy. The St. Johns County GIS Division disclaims all responsibility for the accuracy or completeness of the data shown hereon.

Date: 9/18/2020

## Proposed Plan B - K-8 MM

K-8 School MM: Attendance Zoning



# PROPOSED ATTENDANCE ZONE PLAN B

## K-8 School MM

Crosswater Village Communities

Coastal Oaks Community

Tidewater

Snowden Village

Pine Island Road

Current K-8 students: 703

Currently attending PVA: 610

2021-2022 Projection: 808 K-8 Students (15%)

2022-2023 Projection: 929 K-8 students (15%)

2023-2024 Projection: 1068 K-8 students (15%)

---

Remaining Units to Build: 2047

Current Nocatee Student Generation Rate  
0.84/du and 0.69 in K-8 = 1186 students

# OPTIONS FOR IN-PERSON/LIVE PUBLIC INPUT

- September 22<sup>nd</sup> School Board Workshop & Town Hall Meeting
- October 6<sup>th</sup> School Board Workshop
- October 13<sup>th</sup> School Board Meeting
- October 20<sup>th</sup>: School Board Workshop

ATTENDANCE ZONING:  
TOWN HALL MEETING  
SCHOOL BOARD WORKSHOPS & MEETINGS





# OPTIONS FOR IN-PERSON/LIVE PUBLIC INPUT

- November 3<sup>rd</sup> Discussion and Approval of Advertisement for Attendance Zone Changes (Special SB Mtg)
- November 10<sup>th</sup> School Board Meeting
- November 24<sup>th</sup> School Board Workshop
- December 1<sup>st</sup> School Board Workshop
- December 8<sup>th</sup> Discussion and Approval of Attendance Zone Changes

ATTENDANCE ZONING:  
TOWN HALL MEETING  
SCHOOL BOARD WORKSHOPS & MEETINGS



# OPTIONS FOR PUBLIC INPUT

Please visit St. Johns County School District's website:

- **Download the PowerPoint and attendance zone proposals.**
- **Email** comments and suggestions to our design team, School Board Members and Superintendent.

[www.stjohns.k12.fl.us/zoning](http://www.stjohns.k12.fl.us/zoning)

ATTENDANCE ZONING:  
SCHOOL BOARD WORKSHOP &  
TOWN HALL MEETINGS



**QUESTIONS**

**DISCUSSION**

**PUBLIC COMMENT**







# ATTENDANCE ZONING: SCHOOL BOARD WORKSHOP

OCTOBER 20, 2020