



# ATTENDANCE ZONING K-8 SCHOOL MM

SCHOOL BOARD WORKSHOP &  
TOWN HALL MEETING

September 22, 2020

Five Year Enrollment History		
School Year	September Enrollment 20th Day	Growth %
2014-2015	35,154	4.60%
2015-2016	36,529	3.90%
2016-2017	38,488	5.36%
2017-2018	40,239	4.54%
2018-2019	41,937	4.20%
2019-2020	43,740	4.30%

- Enrollment as of 10<sup>th</sup> day 2020-2021 is 44,179 students.
- 1.9% growth over 10<sup>th</sup> day 2019-2020

SCHOOL BOARD WORKSHOP &  
TOWN HALL MEETING



# DESIGN AND DECISION-MAKING PROCESS

## General Powers of District School Boards (FS 1001.41)

- Assign Students to schools.

SCHOOL BOARD WORKSHOP &  
TOWN HALL MEETING



# DESIGN AND DECISION-MAKING PROCESS

## Examine Student Enrollments

- By Geocodes (Geographic Units of Analysis) which comprise Attendance zones
- New & Current developments
- School's historical data

SCHOOL BOARD WORKSHOP &  
TOWN HALL MEETING



# SJCSD REZONING PARAMETERS (School Board Rule 5.03)

- The plan creates attendance zones that reflect the diversity of the District to the extent practical and consistent with Constitutional requirements.
- Maximum utilization of school facilities. Maximum utilization refers to distributing students among the existing capacity as evenly as possible.
- School size commitments as recommended by school board to the extent practical.
- The plan includes target enrollments that allow for growth and anticipated changing demographics.

SCHOOL BOARD WORKSHOP &  
TOWN HALL MEETING



# SJCSD REZONING PARAMETERS (School Board Rule 5.03)

- The plan keeps neighborhood units in the same attendance zone to the extent practical.
- The plan assigns students to the closest school to the extent practical.
- The plan does not place a transportation burden on any identifiable diversity subgroup (socioeconomic, race/ethnicity, ESOL, or disability). Demographic/Socioeconomic balance.
- Maximize Transportation efficiency costs.
- Minimize the disruption to students and families related to attendance zone changes to the extent practical.

SCHOOL BOARD WORKSHOP &  
TOWN HALL MEETING



# ATTENDANCE ZONING GOALS

- Create Attendance Zone for K-8 School MM
- Relieve Overcrowding
- Plan with additional growth in mind
- Obtain community input
- Ensure quality education for our children

SCHOOL BOARD WORKSHOP &  
TOWN HALL MEETING





# ATTENDANCE ZONING:

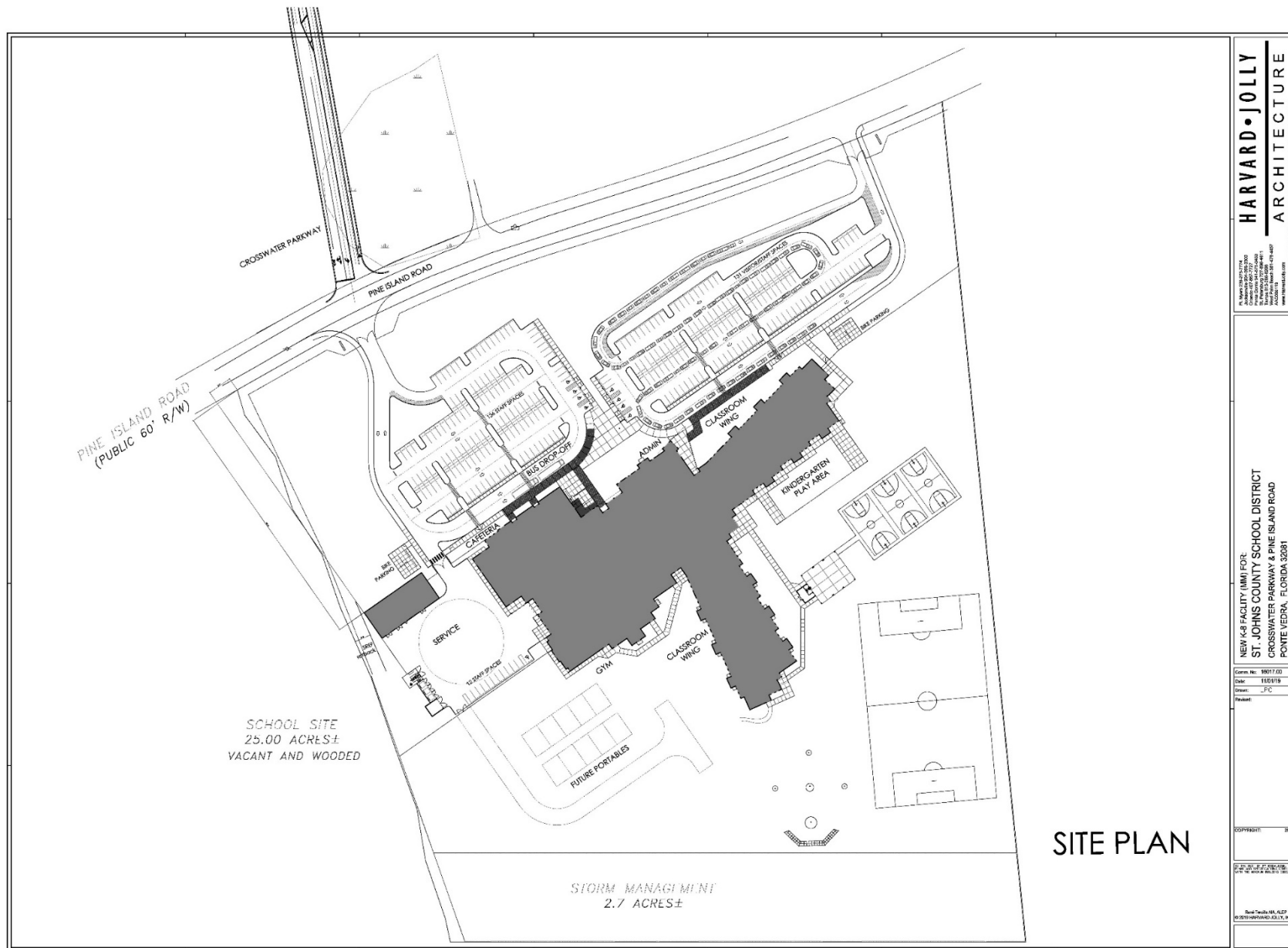
K-8 SCHOOL MM  
2021-2022 SY

SCHOOL BOARD WORKSHOP &  
TOWN HALL MEETING

September 22, 2020







- 25 Acres
- Donated as Mitigation by the Nocatee developer







## K-8 SCHOOL MM

Located in  
Nocatee: 805 Pine  
Island Road

1,490 Student  
Capacity

Will open with  
Grades K-8 for the  
2021-2022 SY

# PALM VALLEY ACADEMY SITUATION

ATTENDANCE ZONING:  
K-8 SCHOOL MM

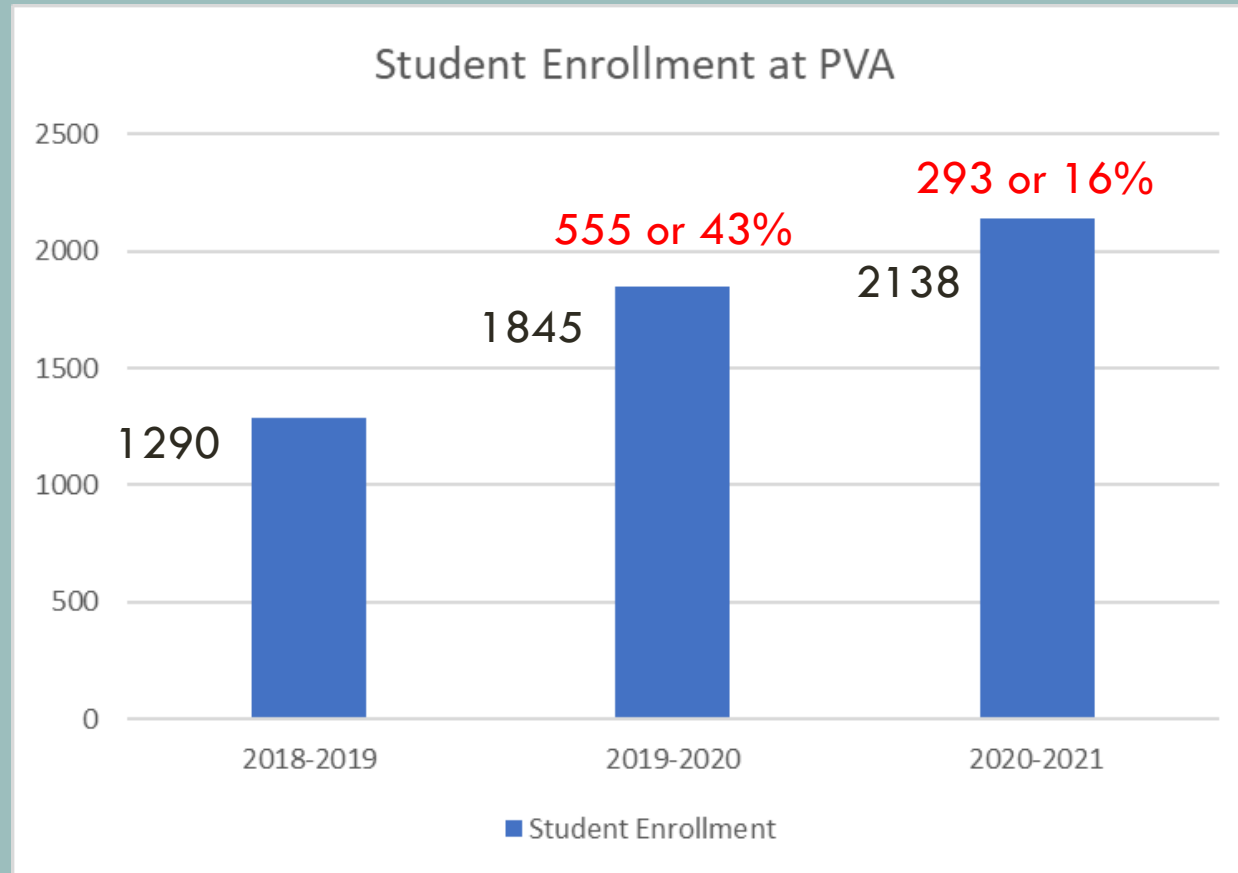


Palm Valley Academy opened for the 2018-2019 School Year.

- Palm Valley Academy currently has 2138 K-8 students and a permanent capacity of 1490.

ATTENDANCE ZONING:  
K-8 SCHOOL MM





2018-2019: Grades K-6

2019-2020: Grades K-7  
7<sup>th</sup> Grade was 218 students.  
 $555 - 218 = 337$  or 26%  
growth

2020-2021: Grades K-8  
8<sup>th</sup> Grade was 243 students.  
 $293 - 243 = 50$  or 2.7%  
growth

ATTENDANCE ZONING:  
K-8 SCHOOL MM

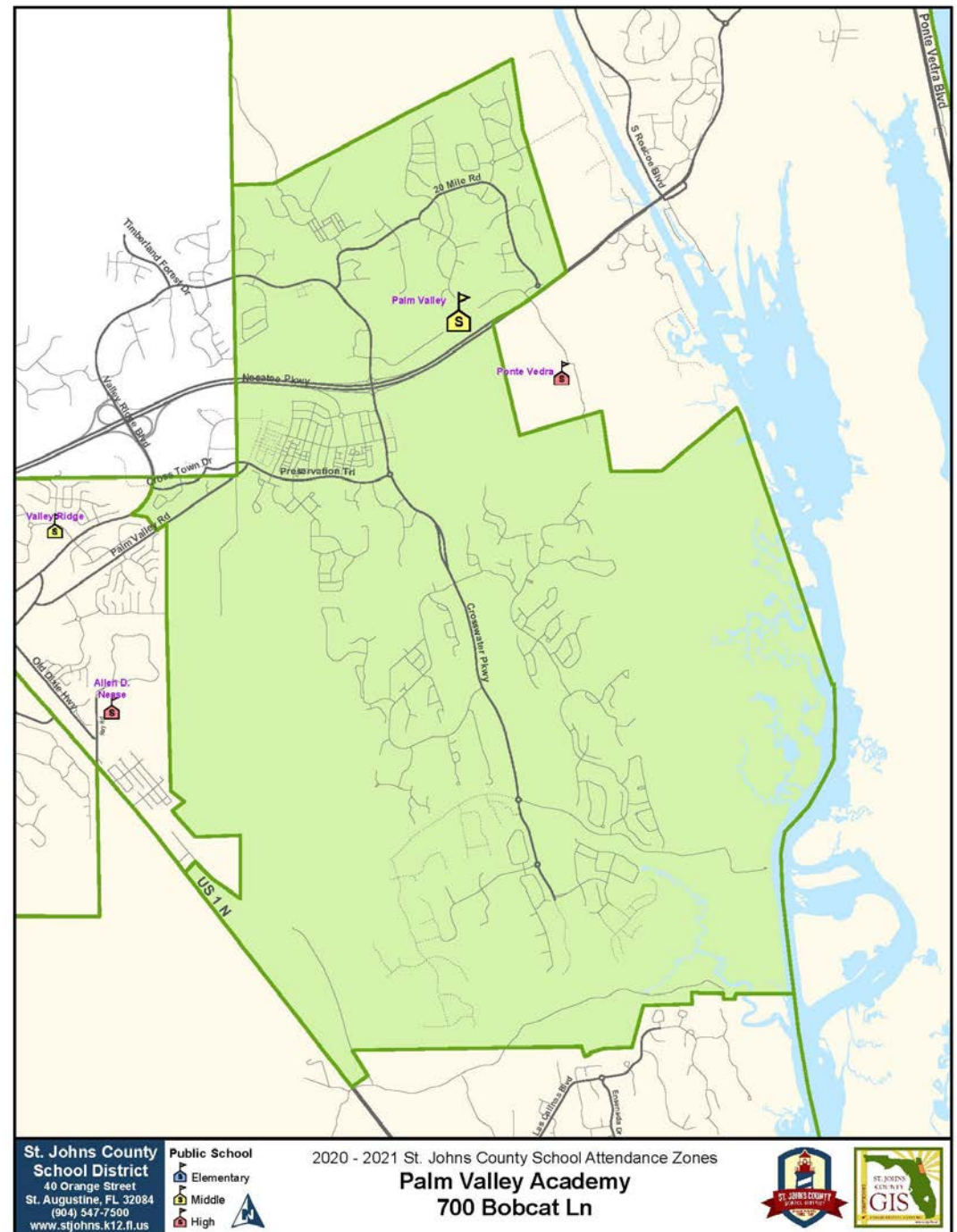


# ZONING PROPOSAL

ATTENDANCE ZONING:  
HIGH SCHOOL HHH

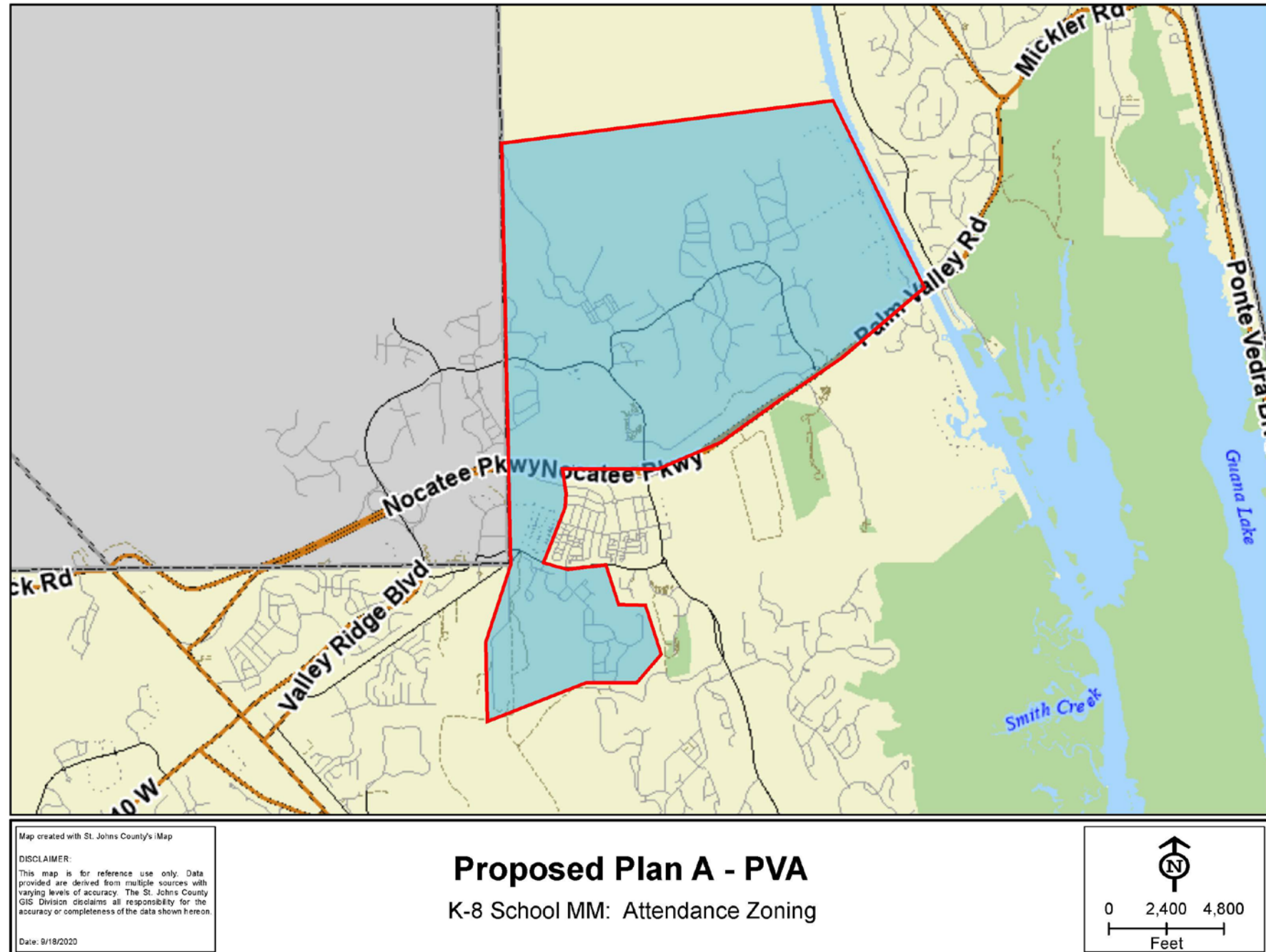


# CURRENT PVA ATTENDANCE ZONE





# PROPOSED ATTENDANCE ZONE PLAN A: PALM VALLEY ACADEMY



# PROPOSED ATTENDANCE ZONE PLAN A

## Palm Valley Academy

Twenty Mile Communities  
Kelly Pointe (SJC portion)  
The Palms (SJC portion)  
Oakwood  
Willow Cove  
The Reserve  
Ranch Road  
West End at Town Center

Current K-8 students: 1413

Currently attending PVA: 1209

2021-2022 Projection: 1526 K-8 students (8%)

2022-2023 Projection: 1648 K-8 students (8%)

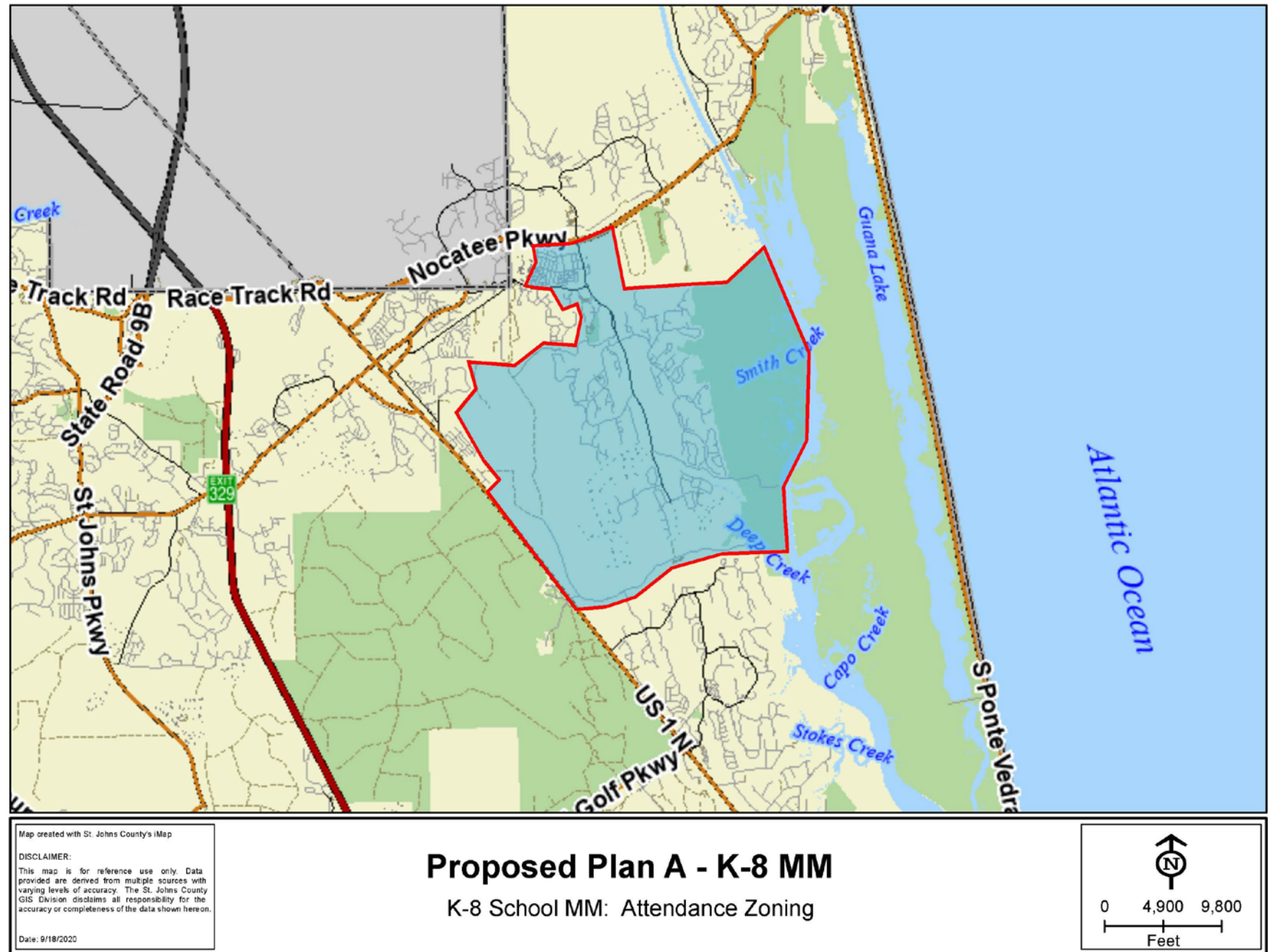
2023-2024 Projection: 1754 K-8 students (6%)

---

Remaining Units to Build: 589

Current Nocatee Student Generation Rate  
0.84/du and 0.69 in K-8 = 341 students

# PROPOSED ATTENDANCE ZONE PLAN A: K-8 SCHOOL MM



# PROPOSED ATTENDANCE ZONE PLAN A

## K-8 School MM

Crosswater Village Communities

Coastal Oaks Community

Town Center Communities (except  
West End)

Tidewater

Snowden Village

Pine Island Road

Current K-8 students: 953

Currently attending PVA: 826

2021-2022 Projection: 1096 K-8 Students (15%)

2022-2023 Projection: 1260 K-8 students (15%)

2023-2024 Projection: 1449 K-8 students (15%)

---

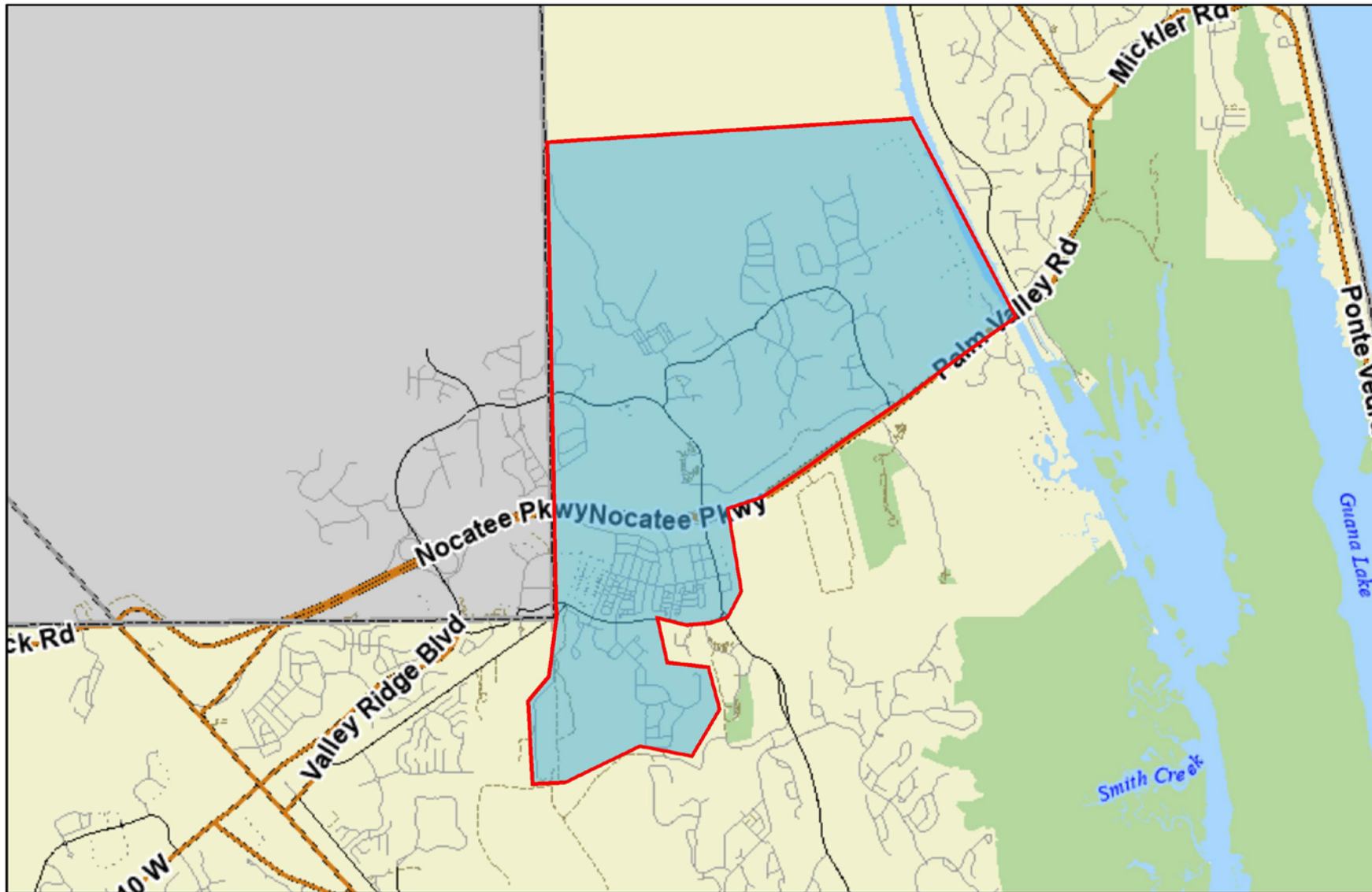
Remaining Units to Build: 2047

Current Nocatee Student Generation Rate  
0.84/du and 0.69 in K-8 = 1186 students



# PROPOSED ATTENDANCE ZONE PLAN B:

## PALM VALLEY ACADEMY



Map created with St. Johns County's iMap

**DISCLAIMER:**

This map is for reference use only. Data provided are derived from multiple sources with varying levels of accuracy. The St. Johns County GIS Division disclaims all responsibility for the accuracy or completeness of the data shown hereon.

Date: 9/18/2020

### Proposed Plan B - PVA

K-8 School MM: Attendance Zoning



0 2,400 4,800  
Feet

# PROPOSED ATTENDANCE ZONE PLAN B

## Palm Valley Academy

Twenty Mile Communities

Kelly Pointe (SJC portion)

The Palms (SJC portion)

Oakwood

Willow Cove

The Reserve

Ranch Road

Town Center

Current K-8 students: 1663

Currently attending PVA: 1425

2021-2022 Projection: 1796 K-8 students (8%)

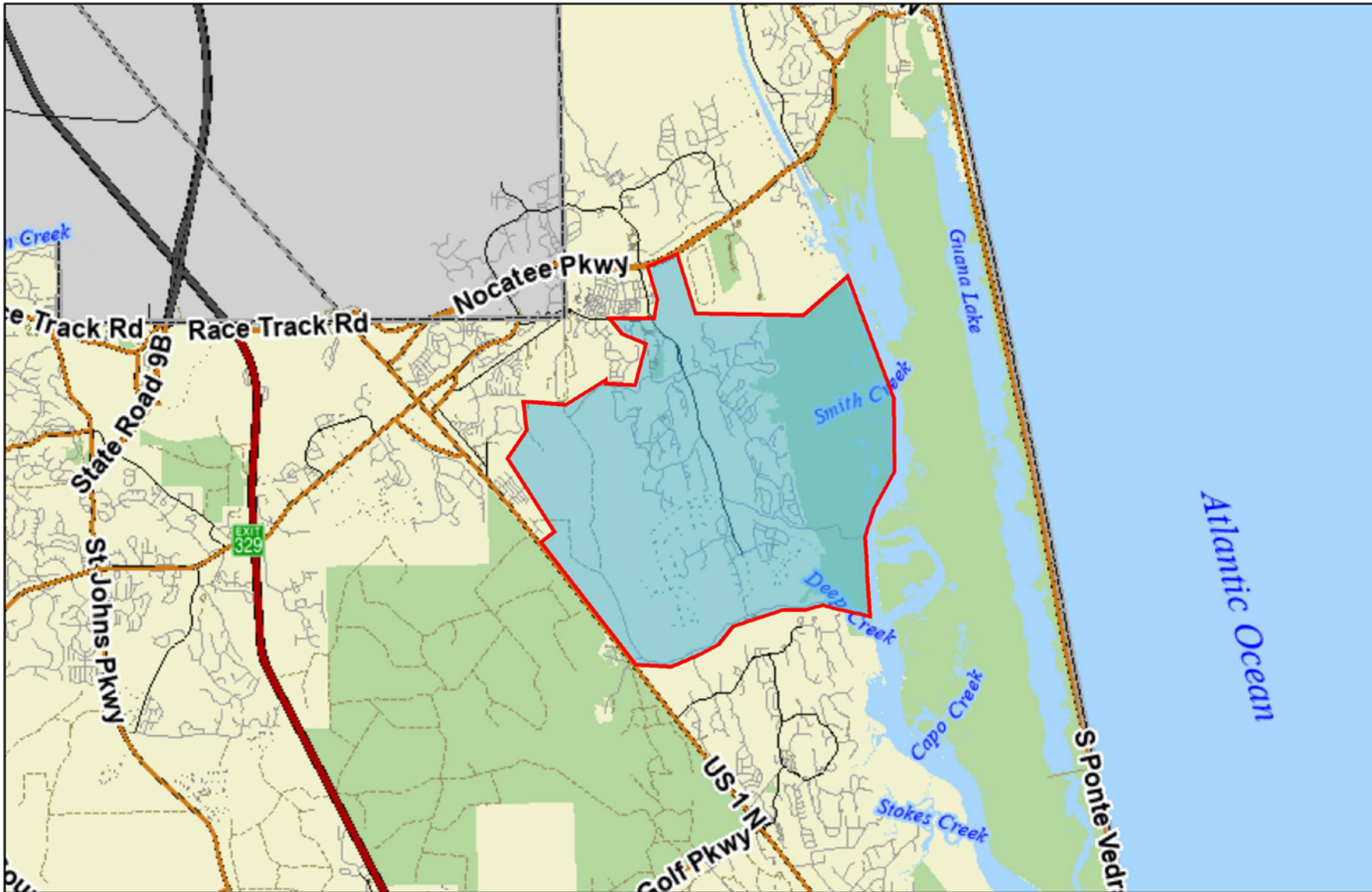
2022-2023 Projection: 1939 K-8 students (8%)

2023-2024 Projection: 2004 K-8 students (3%)

---

Remaining Units to Build: 589

Current Nocatee Student Generation Rate  
0.84/du and 0.69 in K-8 = 341 students



# PROPOSED ATTENDANCE ZONE PLAN B: K-8 SCHOOL MM

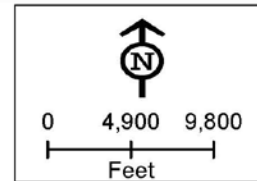
Map created with St. Johns County's iMap

**DISCLAIMER:**  
This map is for reference use only. Data provided are derived from multiple sources with varying levels of accuracy. The St. Johns County GIS Division disclaims all responsibility for the accuracy or completeness of the data shown hereon.

Date: 9/18/2020

## Proposed Plan B - K-8 MM

K-8 School MM: Attendance Zoning



# PROPOSED ATTENDANCE ZONE PLAN B

## K-8 School MM

Crosswater Village Communities

Coastal Oaks Community

Tidewater

Snowden Village

Pine Island Road

Current K-8 students: 703

Currently attending PVA: 610

2021-2022 Projection: 808 K-8 Students (15%)

2022-2023 Projection: 929 K-8 students (15%)

2023-2024 Projection: 1068 K-8 students (15%)

---

Remaining Units to Build: 2047

Current Nocatee Student Generation Rate  
0.84/du and 0.69 in K-8 = 1186 students



## FUTURE DECISIONS

- Start and End times for PVA and K-8 MM are currently under review.
- The Principals for K-8 School MM will be named later this fall.
- After selection, the new Principal will begin communications regarding:
  - School Name
  - School Colors and Mascot
  - PTO
  - Curriculum/ESE Services

# OPTIONS FOR IN-PERSON PUBLIC INPUT

- September 22<sup>nd</sup> School Board Workshop & Town Hall Meeting
- October 6<sup>th</sup> School Board Workshop
- October 13<sup>th</sup> School Board Meeting
- October 27<sup>th</sup>: School Board Workshop

ATTENDANCE ZONING:  
TOWN HALL MEETING  
SCHOOL BOARD WORKSHOPS & MEETINGS



# OPTIONS FOR IN-PERSON PUBLIC INPUT

- November 3<sup>rd</sup> Discussion and Approval of Advertisement for Attendance Zone Changes (Special SB Mtg)
- November 10<sup>th</sup> School Board Meeting
- November 24<sup>th</sup> School Board Workshop
- December 1<sup>st</sup> School Board Workshop
- December 8<sup>th</sup> Discussion and Approval of Attendance Zone Changes

ATTENDANCE ZONING:  
TOWN HALL MEETING  
SCHOOL BOARD WORKSHOPS & MEETINGS



# OPTIONS FOR PUBLIC INPUT

Please visit St. Johns County School District's website:

- **Download the PowerPoint and attendance zone proposals.**
- **Email** comments and suggestions to our design team, School Board Members and Superintendent.

[www.stjohns.k12.fl.us/zoning](http://www.stjohns.k12.fl.us/zoning)

ATTENDANCE ZONING:  
SCHOOL BOARD WORKSHOP &  
TOWN HALL MEETINGS



**QUESTIONS**

**DISCUSSION**

**PUBLIC COMMENT**





# ATTENDANCE ZONING: SCHOOL BOARD WORKSHOP & TOWN HALL MEETING

September 22, 2020