

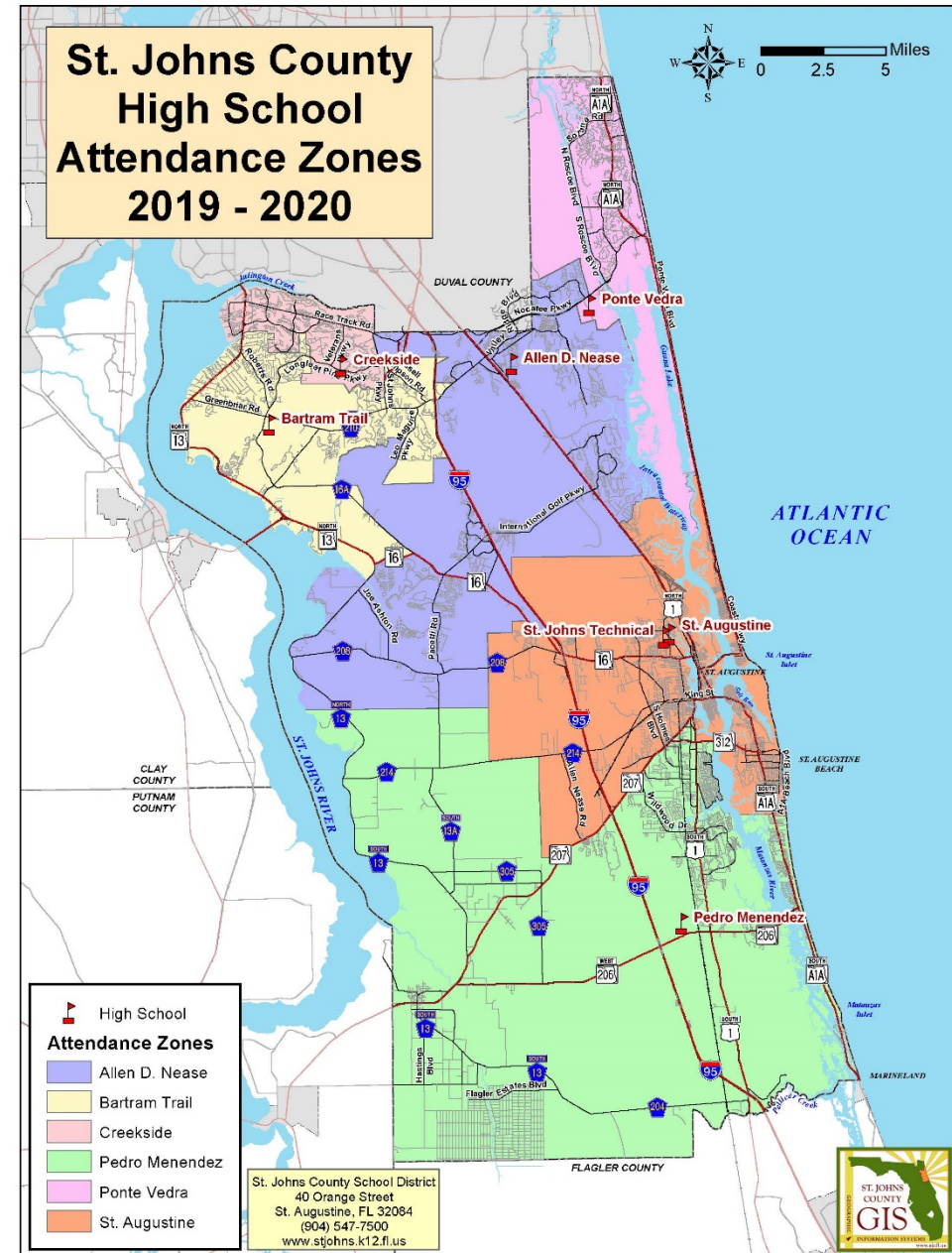


# ATTENDANCE ZONING: REVISED PROPOSAL

SCHOOL BOARD WORKSHOP

March 3, 2020

# CURRENT HIGH SCHOOL ATTENDANCE ZONES



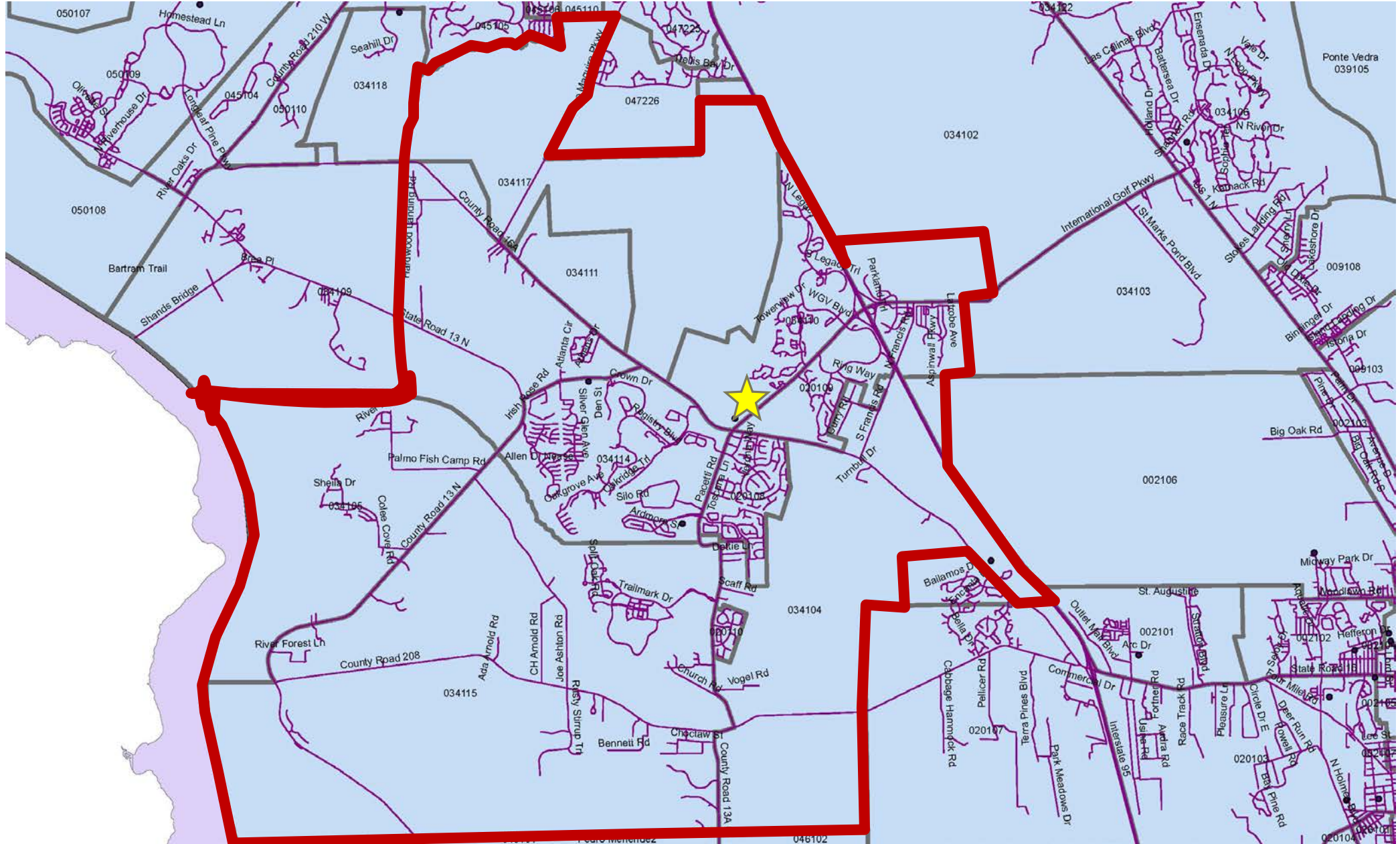
## High School HHH *REVISED* proposed zone includes

- Areas currently zoned to Nease HS that are located west of I-95 (Geocodes 020108, 020109, 034104, 034110, 034111, 034114, 034117, 052101, 052102, 052103, 052104, 052105, & 052106)
- Bannon Lakes (Geocode 034102)
- Markland and N. Francis Road (Geocode 034103)
- CR 16A South of Shearwater DRI (Geocode 034115)
- Orangedale (Geocode 034109) – portion east of Trout Creek & SR 16

ATTENDANCE ZONING:  
HIGH SCHOOL HHH



# PROPOSED HIGH SCHOOL HHH ATTENDANCE ZONE





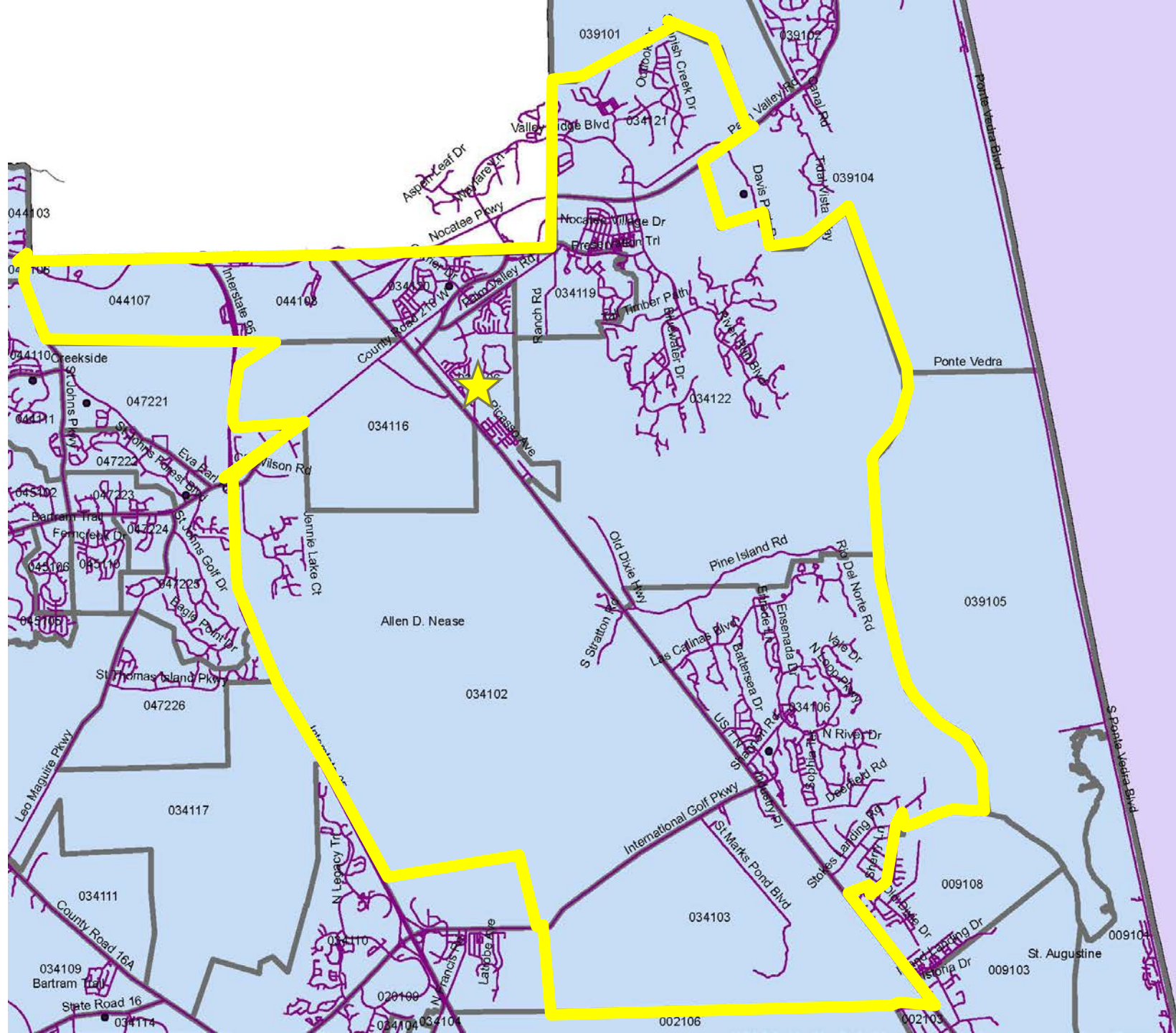
## Allen D. Nease High School proposed zone includes

- Areas currently zoned to Nease HS that are located East of I-95, including Nocatee and Palencia (Geocodes 034105, 034106, 034119, 034120, 034121, 034122, 034123 & 039106)
- Twin Creeks DRI (Geocode 0341116)
- Areas off of RaceTrack Road currently zoned to Nease HS (Geocodes 044107 and 044108)

ATTENDANCE ZONING:  
HIGH SCHOOL HHH



# PROPOSED NEASE HIGH SCHOOL ATTENDANCE ZONE



Bartram Trail High School **REVISED** proposed zone includes

Areas currently zoned to Bartram Trail HS with the exception of:

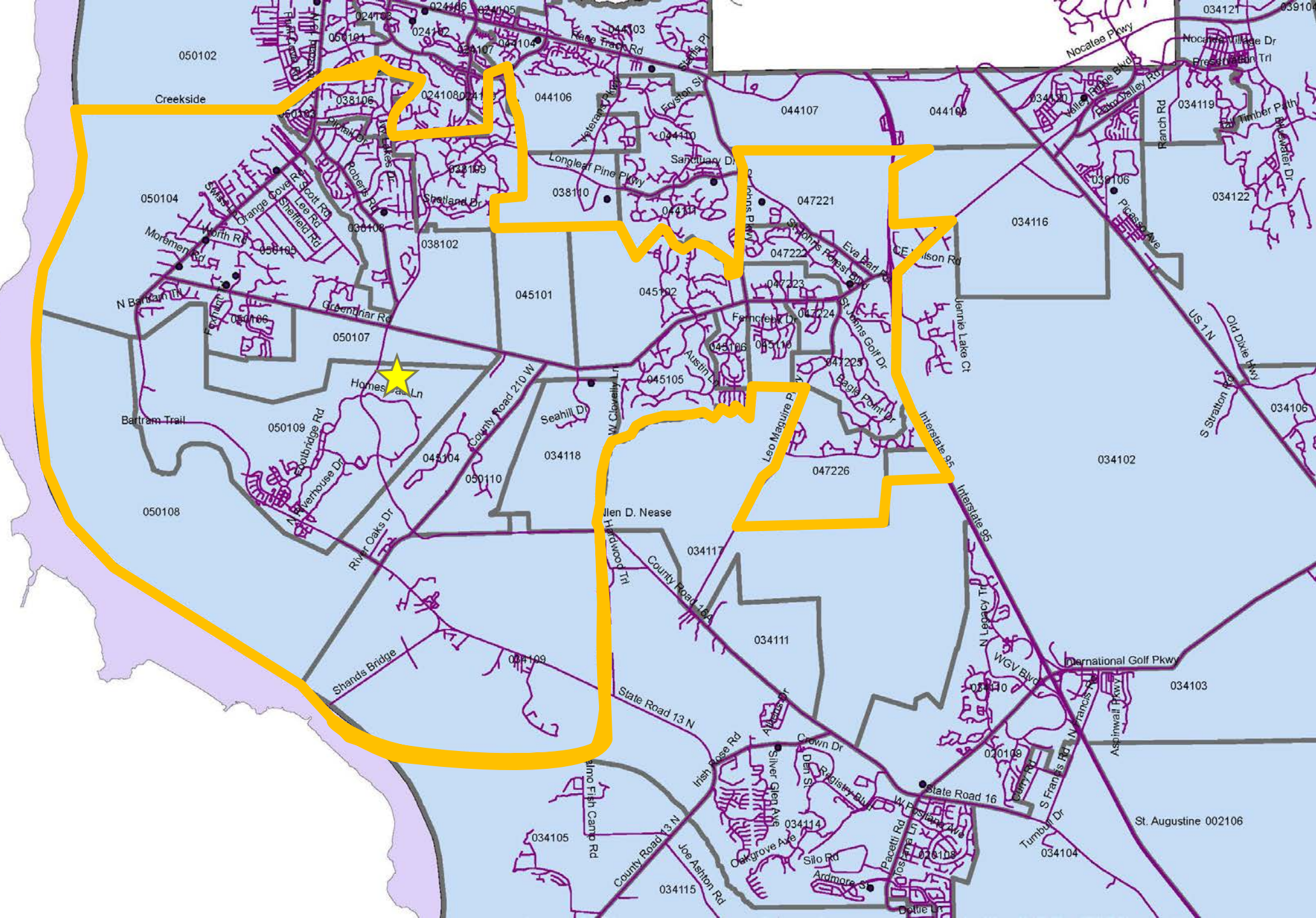
- CR 16A South of Shearwater DRI (Geocode 034115)
- **Orangedale (Geocode 034109) – portion east of Trout Creek & SR 16**

ATTENDANCE ZONING:  
HIGH SCHOOL HHH





PROPOSED  
BARTRAM  
TRAIL HIGH  
SCHOOL  
ATTENDANCE  
ZONE





Creekside High School **REVISED** proposed zone includes

- **No Changes**

ATTENDANCE ZONING:  
HIGH SCHOOL HHH



# CURRENT CREEKSIDE HIGH SCHOOL ATTENDANCE ZONE

