

St. Johns County School District

Attendance Zoning 2019-2020

Special School Board Meeting
May 28, 2019

Five Year Enrollment History

Five Year Enrollment History		
School Year	September Enrollment	Growth %
2013-2014	33,596	
2014-2015	35,154	4.60%
2015-2016	36,529	3.90%
2016-2017	38,488	5.36%
2017-2018	40,239	4.55%
2018-2019	41,937	4.22%

Design and Decision Making Process

General Powers of District School Boards

(FS 1001.41)

- Assign Students to schools.

Design and Decision Making Process

- Examine Student Enrollments
 - By Geocodes (Geographic Units of Analysis) which comprise Attendance zones
 - New & Current developments
 - School's historical data

SJCSD Rezoning Parameters (School Board Rule 5.03)

- The plan anticipates future growth and demographic changes in the attendance zone.
- The plan fully utilizes school facilities. Maximum utilization refers to distributing students among the existing capacity as evenly as possible.
- The plan meets school size commitments as recommended by school board to the extent practical.
- The plan keeps neighborhood units in the same attendance zone to the extent practical.

SJCSD Rezoning Parameters (School Board Rule 5.03)

- The plan assigns students to the closest school to the extent practical.
- The plan does not place a transportation burden on any identifiable diversity subgroup (socioeconomic, race/ethnicity, ESOL, or disability). Demographic/Socioeconomic balance.
- The plan maximizes transportation efficiency costs.
- The plan minimizes the disruption to students and families related to attendance zone changes to the extent practical.
- The plan creates demographic balance.

Attendance Zoning Goals

- Adjust existing Attendance Zones to correlate to new development boundaries.
- Adjust existing Attendance Zones based on development trends.

Crescent Key

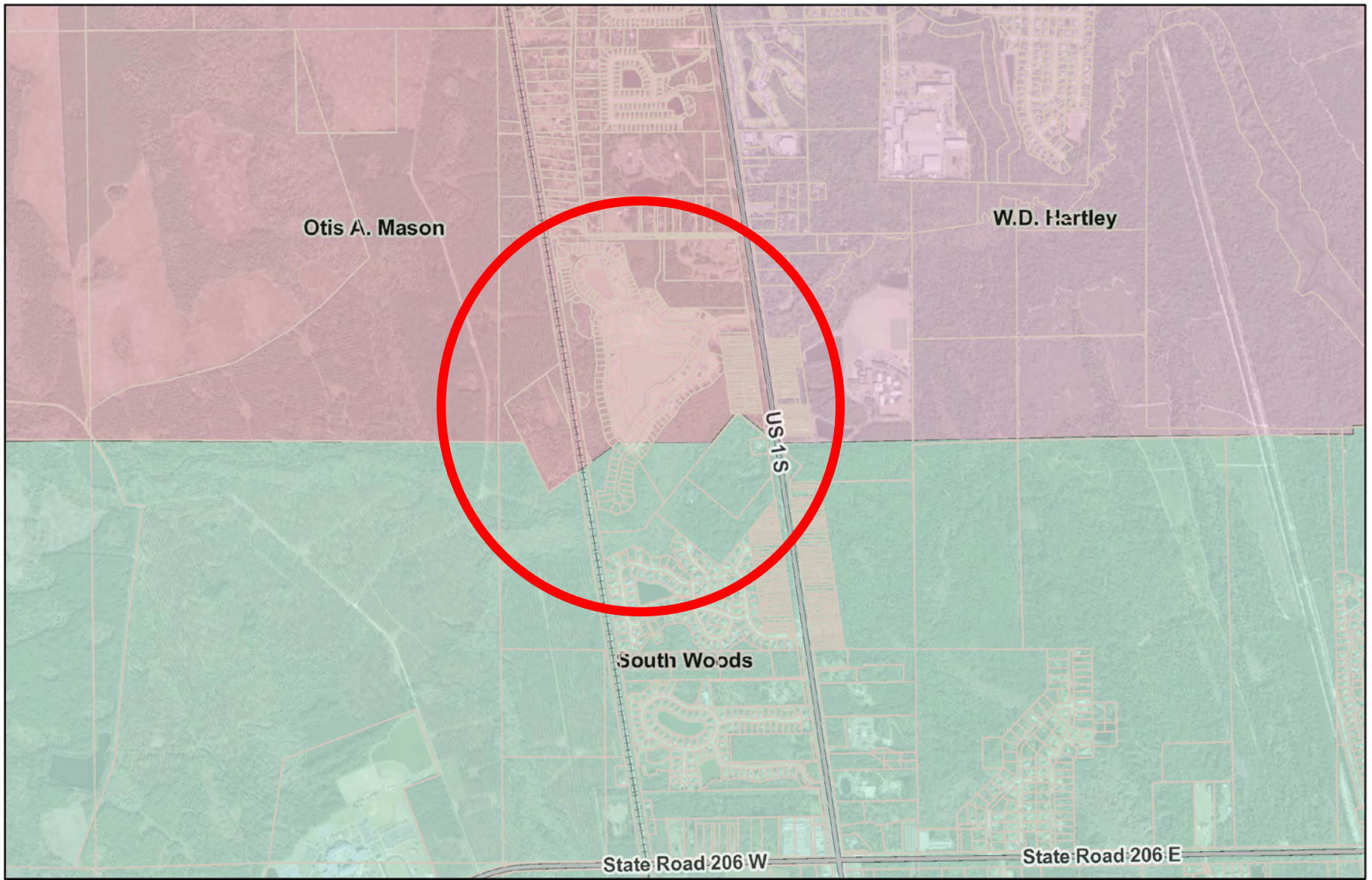
Attendance Zone Proposal

Situation

- Crescent Key contains 215 single family dwellings.
- The development built across an long-standing attendance zone line.
 - 190 lots are located in the Mason Elementary School Zone (Geocode 036104)
 - 25 lots are located in the South Woods Elementary School Zone (Geocode 046108)
 - Crescent Key Drive: 22 lots
 - Sweet Mango Trail: 3 lots

Situation

- 25.2 Elementary Students projected for Crescent Key
- Currently 3 elementary students attending South Woods Elementary. (Current Grades: 1st, 4th and 5th)
- Currently 2 buses stopping at Crescent Key: 1 for Mason and 1 for South Woods
- **Proposal to rezone the remainder of Crescent Key Drive and Sweet Mango Trail to Mason Elementary**

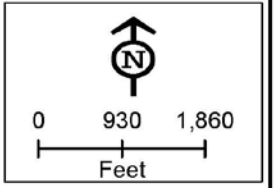


Map created with St. Johns County's iMap

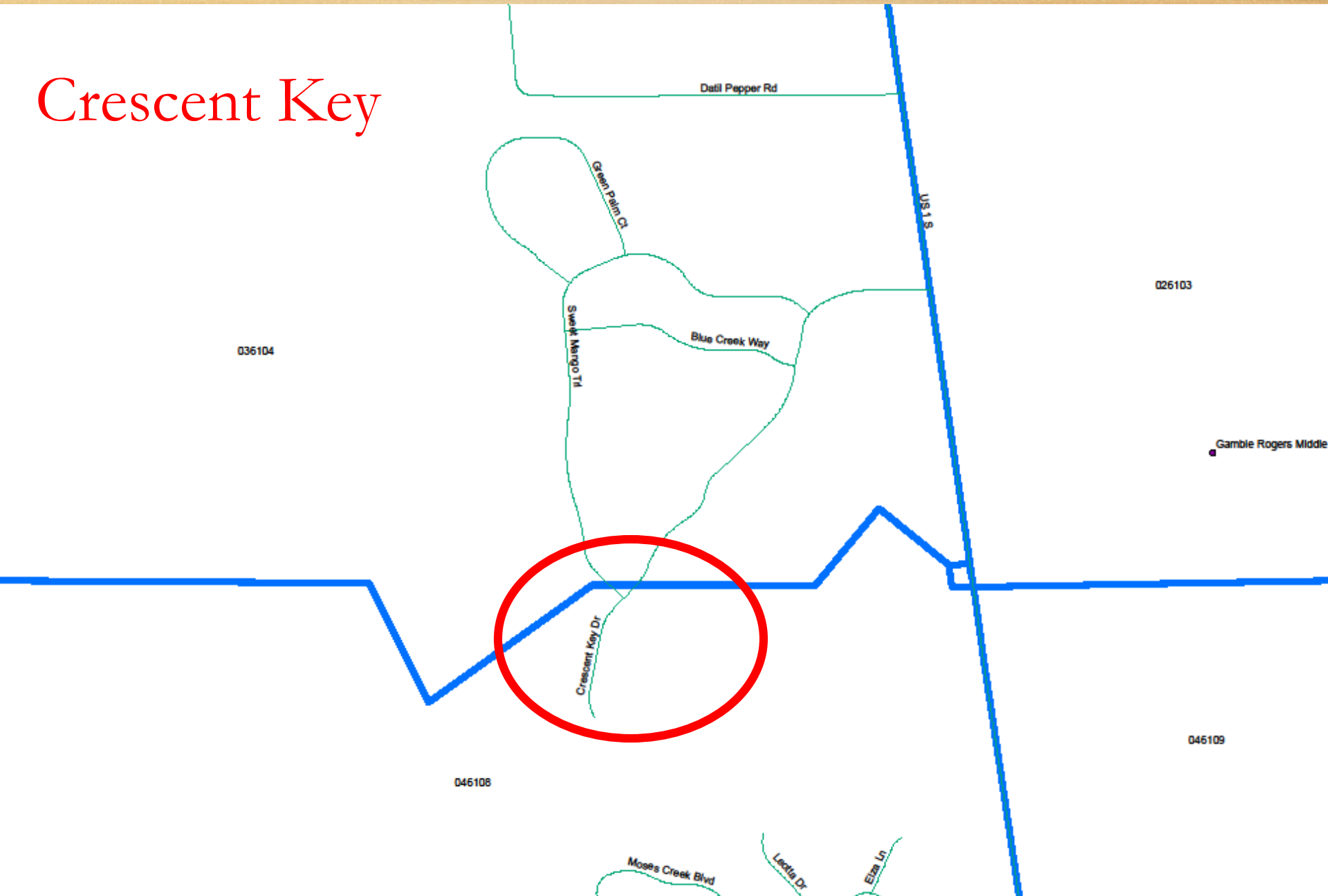
DISCLAIMER:
This map is for reference use only. Data provided are derived from multiple sources with varying levels of accuracy. The St. Johns County GIS Division disclaims all responsibility for the accuracy or completeness of the data shown herein.

Date: 5/2/2019

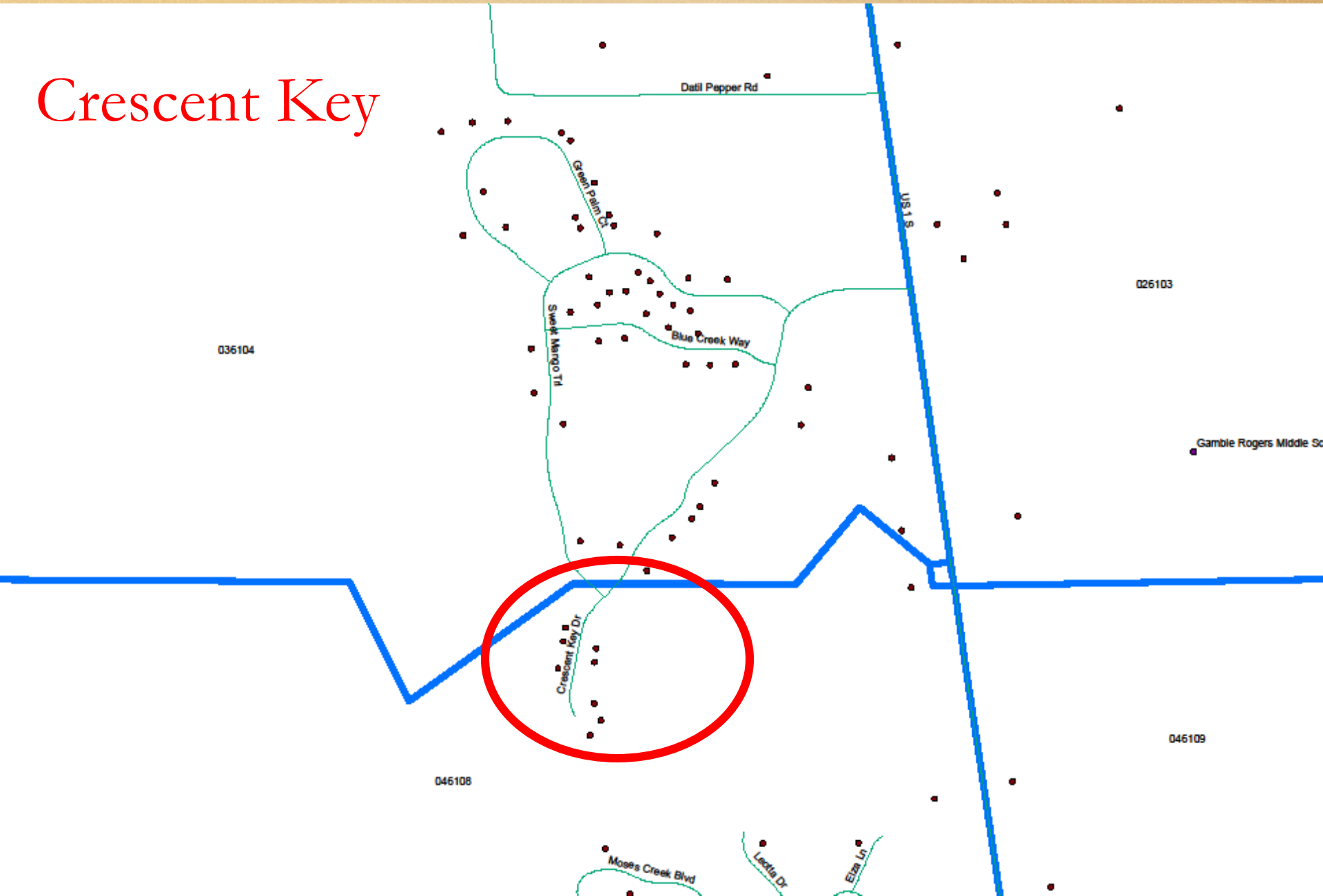
Crescent Key



Crescent Key



Crescent Key



Gamble Rogers Middle So

The Landing at St. Augustine

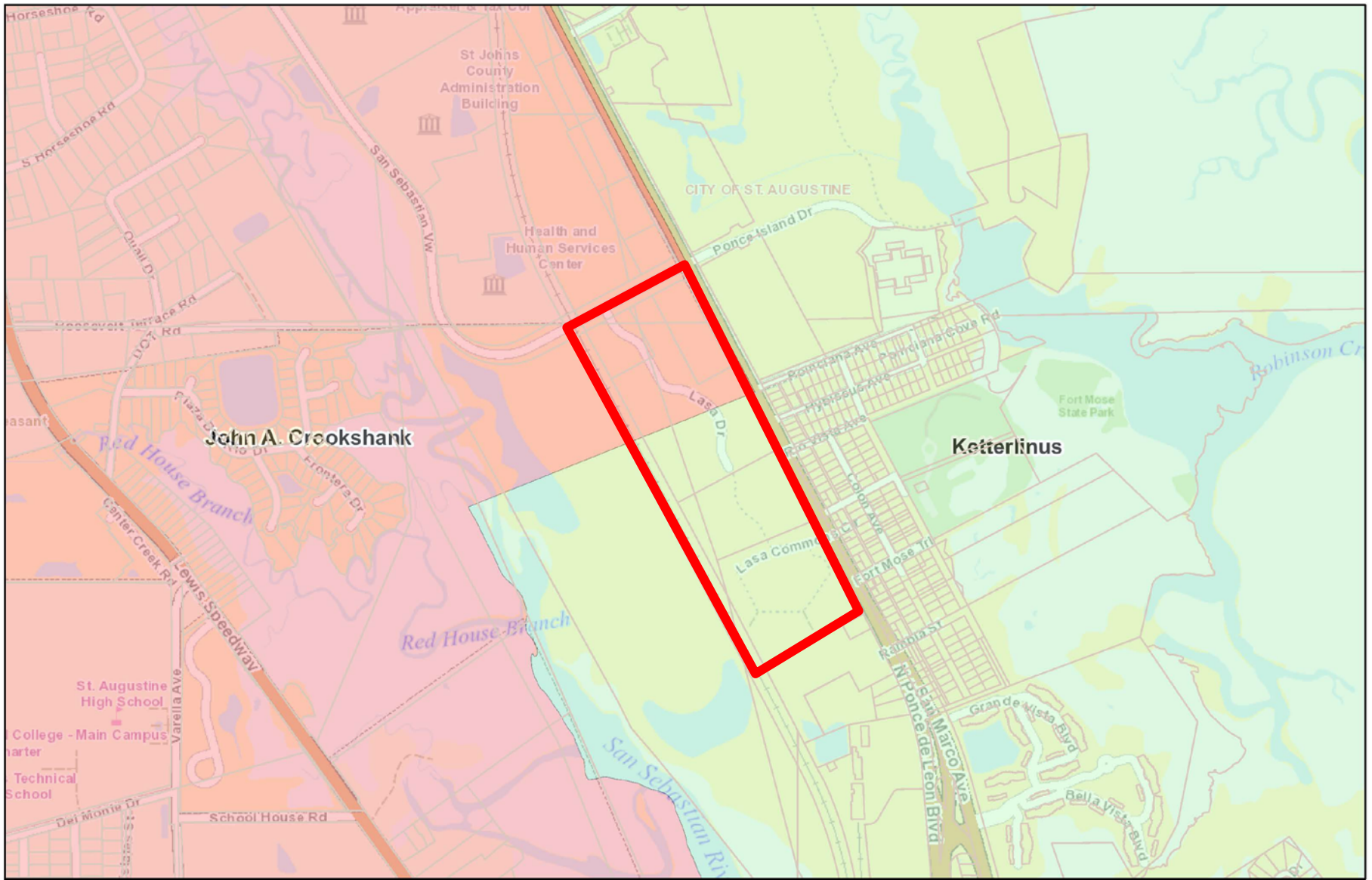
Attendance Zone Proposal

Situation

- The Landing at St. Augustine will contain 585 apartments.
- The development built across an long-standing attendance zone line.
 - Portion of Phase 1 is located in the Crookshank Elementary School Zone (Geocode 002104)
 - Portion of Phase 1 and Phase 2 is located in the Ketterlinus Elementary School Zone (Geocode 009103)

Situation

- 34.2 Elementary Students projected for The Landing at St. Augustine
- Currently 1 elementary student attending Crookshank Elementary. (Current Grade: 4th)
- Currently 2 buses stopping at The Landing at St. Augustine: 1 for Crookshank and one for Ketterlinus
- **Proposal to rezone the portion of Phase 1 of The Landing at St. Augustine to Ketterlinus Elementary**

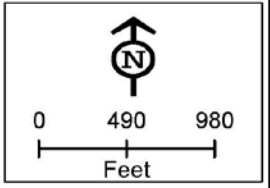


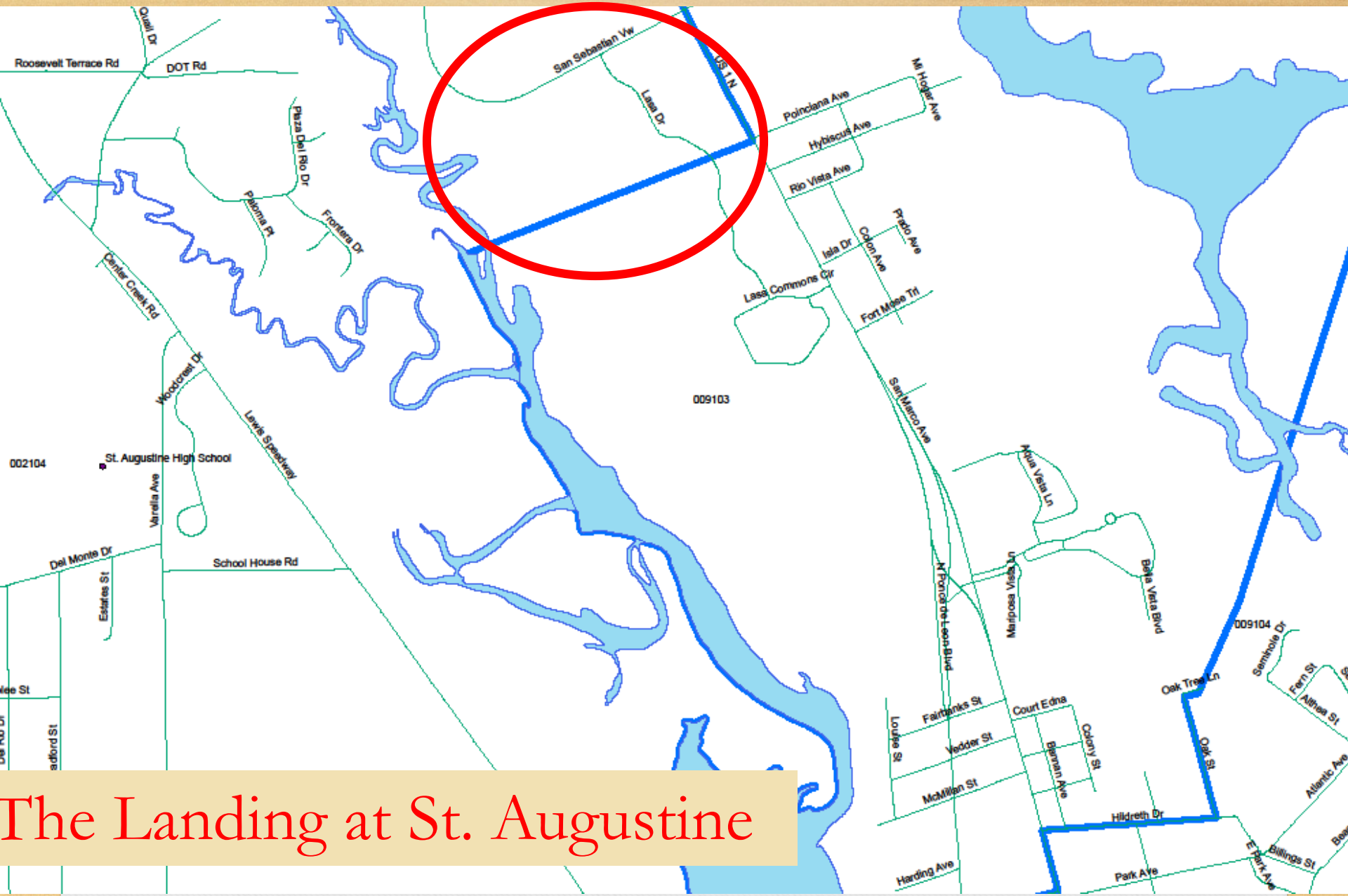
Map created with St. Johns County's iMap

DISCLAIMER:
 This map is for reference use only. Data provided are derived from multiple sources with varying levels of accuracy. The St. Johns County GIS Division disclaims all responsibility for the accuracy or completeness of the data shown herein.

Date: 5/2/2019

The Landing at St. Augustine





The Landing at St. Augustine

SilverLeaf DRI

Attendance Zone Proposal

Situation:

- 10,700 residential units with potential to generate students
- 6,800 SF units & 3,900 MF units
- Estimated to generate 4,870 students
- Donation of 3 school sites (2 K-8s and 1 High School) on 161 Acres
- Mitigation Payment of \$7,531 per unit
- Total Mitigation of \$98,487,818
- Developer to provide land for driveway access to the High School Site from Silverleaf & funding based on independent engineer's cost estimate

Situation:

- Pending construction plan approval for 1424 SF and 522 MF units

- Student Projections:

Year 1: 142 SF and 52 MF du with 95.2 students

Elementary 42.8; Middle 22.9; High 29.5

Year 2: 570 SF and 209 MF du with 382.3 students

Elementary 172; Middle 91.8; High 118.5

Year 3: 712 SF and 261 MF du with 477.5 students

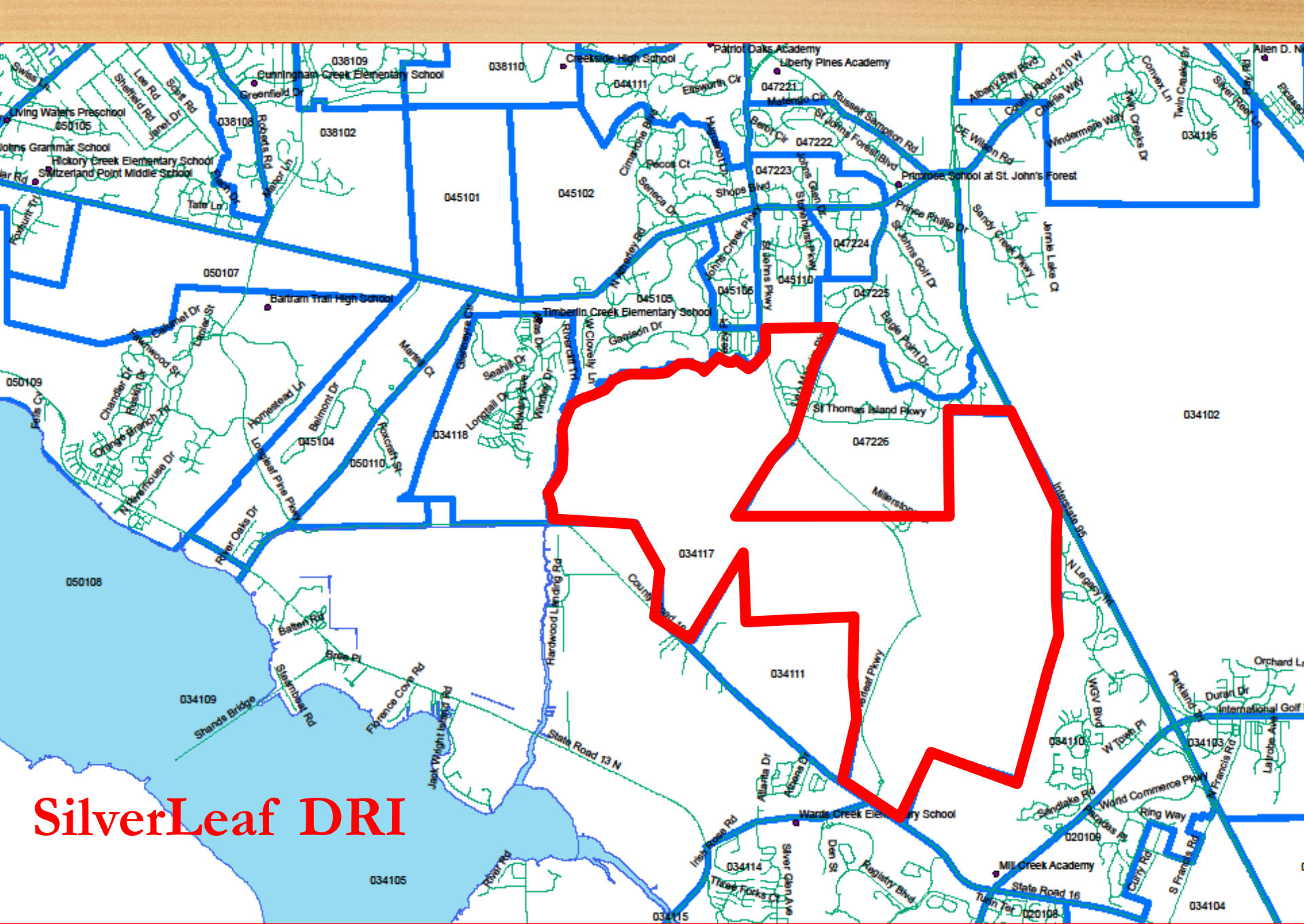
Elementary 214.9; Middle 114.6; High 148

Situation

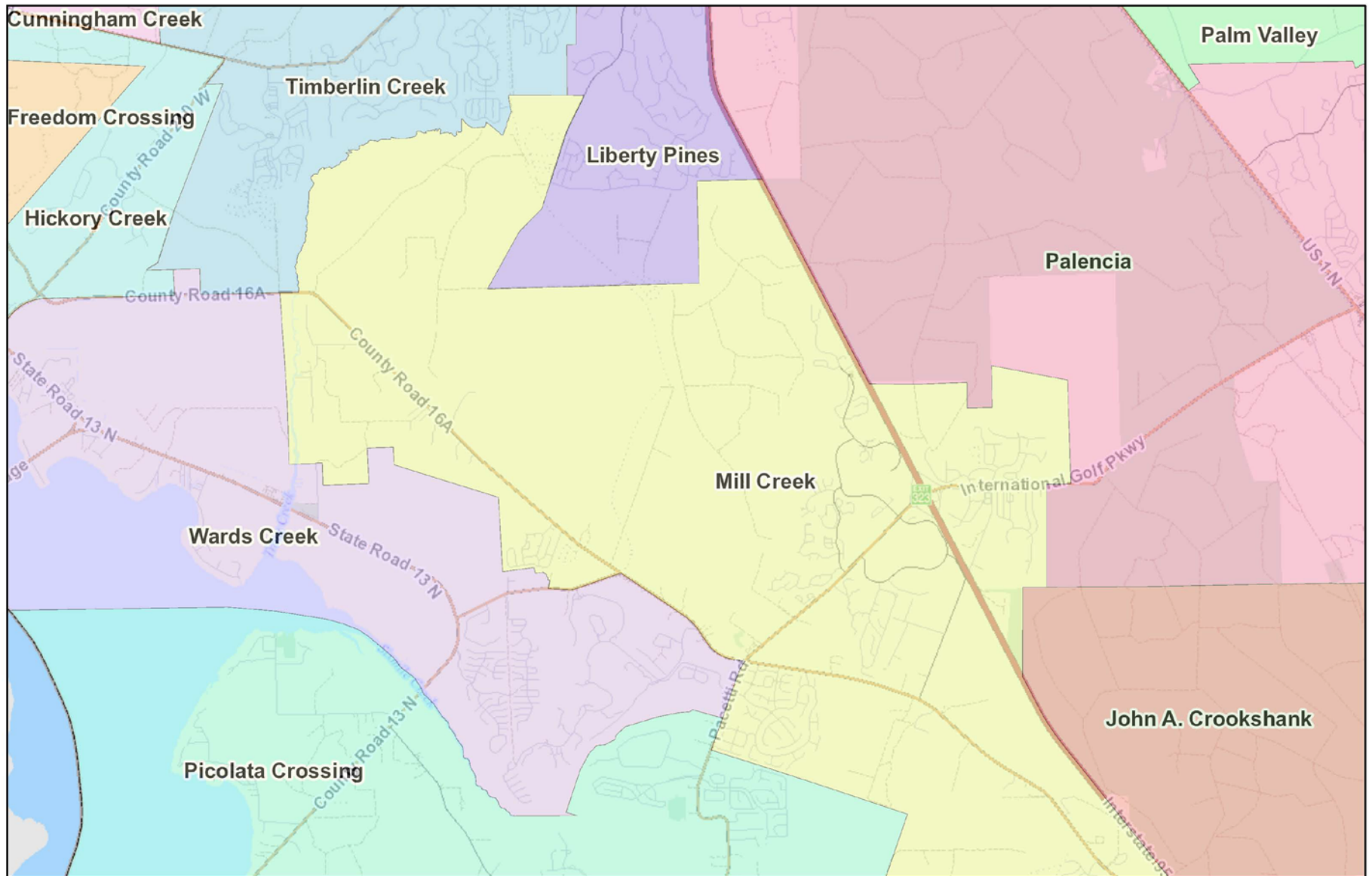
- The SilverLeaf DRI is currently zoned to Mill Creek Academy (MCA) for elementary and middle. Mill Creek Academy contain large amounts of development pressure within their attendance zones. During the 2018-2019 SY, MCA grew by 16% discounting the addition of the 6th grade.
- Wards Creek Elementary has declined in enrollment for the current year.
- Pacetti Bay Middle's enrollment is being reduced by the conversion of Mill Creek to a K-8.

Situation

- **Proposal to rezone the SilverLeaf DRI (Geocode 034117) to Wards Creek Elementary and Pacetti Bay Middle School.**
- **There will be two K-8 Schools constructed in SilverLeaf DRI in the future.**



SilverLeaf DRI



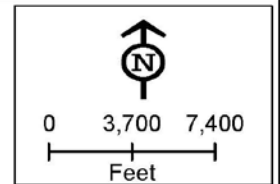
Map created with St. Johns County's iMap

DISCLAIMER:
 This map is for reference use only. Data provided are derived from multiple sources with varying levels of accuracy. The St. Johns County GIS Division disclaims all responsibility for the accuracy or completeness of the data shown herein.

Date: 5/3/2019

SilverLeaf DRI

Elementary Attendance Zones



SilverLeaf DRI

If the SilverLeaf DRI continued to be zoned to Mill Creek Academy:

- Proposed Zone Current Students: 1036 students-Mill Creek Academy
- Proposed Zone with 1 year growth: 1259 students-Mill Creek Academy
- Proposed Zone with 2 years growth: 1581 students-Mill Creek Academy
- Proposed Zone with 3 years growth: 1796 students-Mill Creek Academy

SilverLeaf DRI

- Proposed Zone Current Students: 720 students-Wards Creek
1484 students-Pacetti Bay
- Proposed Zone with 1 year growth: 763 students-Wards Creek
1327 students-Pacetti Bay
- Proposed Zone with 2 years growth: 935 students-Wards Creek
1239 students-Pacetti Bay
- Proposed Zone with 3 years growth: 1150 students-Wards Creek
1354 students-Pacetti Bay

Next Steps...

Public input: Please visit St. Johns County School District's website:

- **Download the PowerPoint.**
- **Email** comments and suggestions to our design team, School Board Members and Superintendent.

www.stjohns.k12.fl.us/zoning/

Next Steps...

Options for in-person public input:

- May 7th School Board Workshop ✓
- May 14th School Board Meeting ✓
- May 28th: Discussion and Approval of Advertisement for Attendance Zone Changes/Special School Board Meeting
- June 4th School Board Workshop
- June 11th School Board Meeting
- June 25th School Board Workshop
- July 9th Discussion and Approval of Attendance Zone Changes/School Board Meeting

Questions & Public Comment