



# ST. JOHNS COUNTY SCHOOL DISTRICT





# AGENDA

- **School District Accolades**
- **St. Johns County Growth**
- **School Funding**
- **November Referendums**
  - **Half-Cent Sales Tax**
  - **School Millage**



# St. Johns County School District

- “A” grade since 2004
- ACT & SAT scores above state & national level
- 94% graduation rate



- Certificate of Excellence in financial reporting 2016 – 2023
- 97% of ALL funds are spent in schools
- \$77M cost avoidance with comprehensive energy management plan



**Returned children to in person learning quickly and safely during COVID**



**Keep Our Children Safe**

# St. Johns County has DOUBLED in population over the last 18 years.



## Residents

160,266 in 2005  
320,110 in 2023



## Students

23,273 in 2005  
51,826 in 2023

**So have the number of students in our schools.**

# There are TWO school funding silos

## Capital Outlay Budget

- New Construction
- Security Improvements
- Maintenance
- Technology

**Supported by Half-Cent**

## Operating Budget

- Salaries & Benefits
- Utilities
- Instructional Materials
- Consumable Supplies

**Supported by School Millage**

**In 2015, Voters Approved a Half-Cent Sales Tax for Capital Outlay**

# “Promises Made, Promises Kept”

## Safety

- ❑ Mobile Panic Alarm Systems
- ❑ Single Point of Entry Improvements

## Growth

- ❑ One New Elementary
- ❑ One New K-8 School
- ❑ Partially Funded Two K-8s

## Maintenance

- ❑ 13 Roof Replacements
- ❑ Covered PE Areas, Restrooms and other site improvements

## Technology

- ❑ 12,000 Computers
- ❑ 1,420 LED Panels
- ❑ Wi-Fi upgrades in Schools



**HALFCENTSUCCESS.COM**

# Half-Cent SUNSETS in 2025

\$37M Annual Revenue Loss

- Keeping our children safe remains #1 priority
- Growth Continues
  - Still one of the fastest growing counties in Florida
  - Projected to add 13,600 students by 2033
  - 600 portables for 13,000 students - Not a long-term solution
  - Construction costs are up 63%
- Must maintain, replace and upgrade critical systems
- Technology continues to rapidly advance

**We Can't Afford to Lose the Half-Cent!**

# Half-Cent RENEWAL will be on the November '24 ballot

- **Sales tax STAYS at 6.5%**
- **Lowest sales tax in Northeast FL**
- **Half-cent sales tax collected stays in St. Johns County**
- **Up to 38% paid for by out-of-county visitors**
- **Citizens Advisory Committee will continue to monitor and advise**



**Safety**



**Growth**



**Maintenance**



**Technology**



# “TWO Votes, ONE Decision”

## Capital Outlay Budget



Supported by Half-Cent

## Operating Budget



Supported by School Millage

# “For Our STUDENTS”

# School district is facing operational challenges

- Largest employer in St. Johns County – 6,438 employees
- St. Johns has a higher cost of living
- **Historic vacancy levels** for both instructional and support positions
- Duval, Clay & Nassau have passed millage increases

## Avg. Teacher Salary

Flagler \$58,369

Duval \$55,282

Putnam \$55,000

▶ St. Johns \$53,484

**We must offer competitive compensation!**

# Millage increase for TEACHER and STAFF pay will be on the November '24 ballot

## What is Millage?

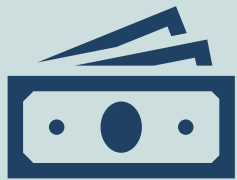
- One mill equals \$1 per \$1,000 of assessed value, less homestead

## What does it cost?

- Avg. tax value in St. Johns County is \$360,000 which means \$1 day, per household

## How will it be spent?

- Recruit and retain high-quality teachers and staff, invest in school safety and student welfare, and preserve and enhance educational programs, including science, technology, art, music and athletics



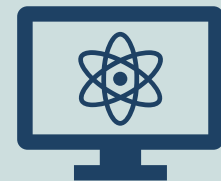
**Recruit &  
Retain**



**School  
Safety**



**Student  
Welfare**



**Enhanced  
Programs**

# “TWO Votes, ONE Decision”

## Half-Cent for Schools

- Growth, Safety, Maintenance & Technology
- No additional cost to residents
- Up to 38% paid by visitors
- 100% of half-cent stays in St. Johns
- Citizens Advisory Committee

**10 Years**

## One Mill for Teachers & Staff

- Recruit and retain high-quality teachers and staff in a safe and secure learning environment, with enhanced student programs
- \$1/day for average household
- 100% of one-mill stays in St. Johns
- Citizens Advisory Committee

**4 Years**

**For our STUDENTS!**