



# THE POWER OF PLC'S

DAWN SAPP

ASSOCIATE SUPERINTENDENT CURRICULUM AND INSTRUCTION

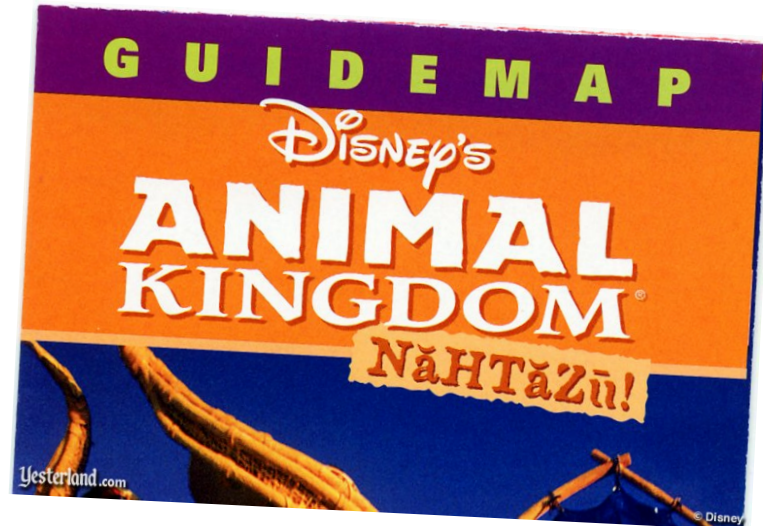


**PROFESSIONAL  
LEARNING  
COMMUNITY**

Working & Learning Together

ST. JOHNS COUNTY IS COMMITTED TO A STRUCTURE IN WHICH **TEAMS** WORK COLLABORATIVELY IN ONGOING CYCLES OF INQUIRY AND ACTION RESEARCH TO ACHIEVE BETTER RESULTS FOR THE **PEOPLE WE** SERVE.

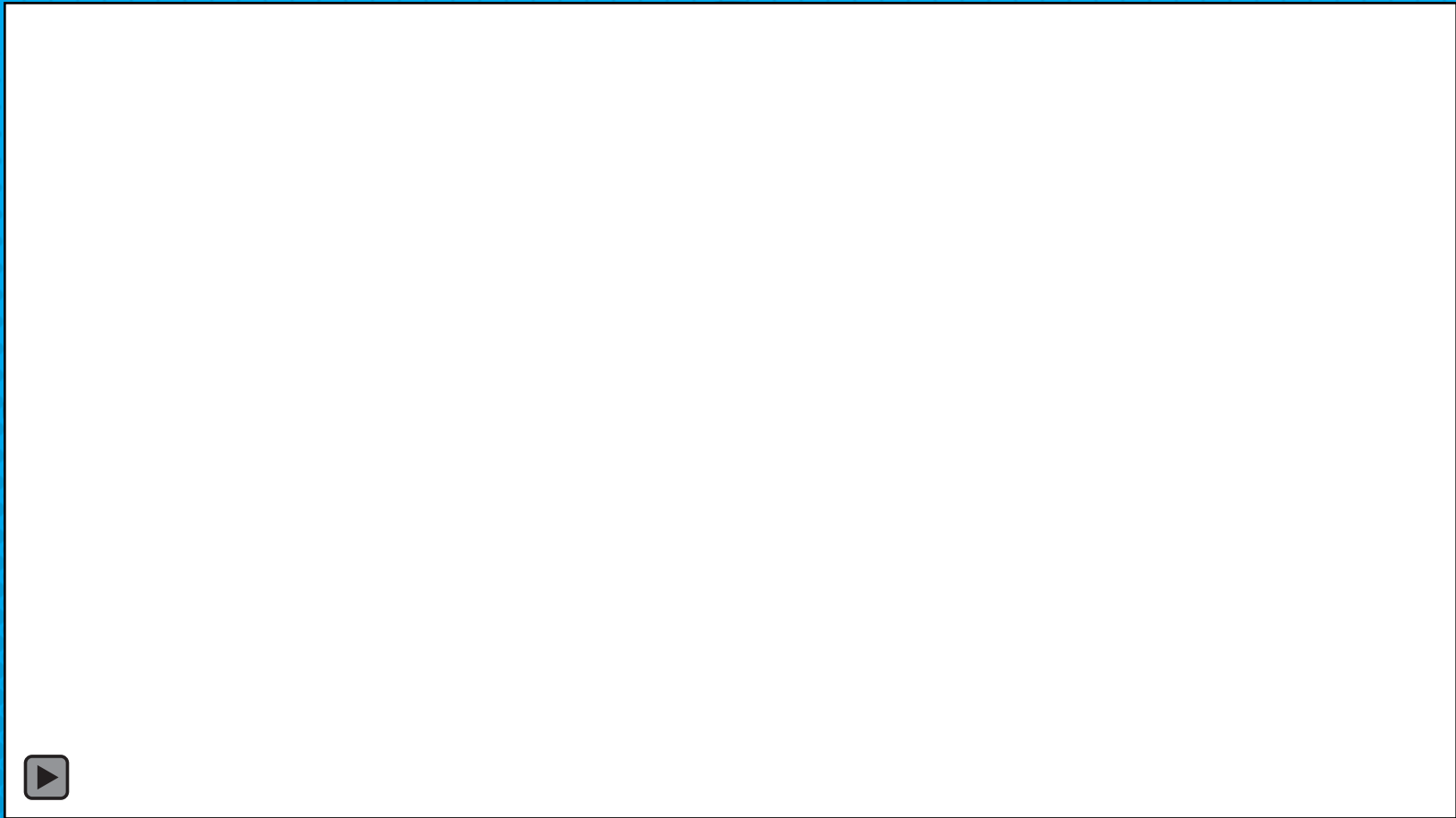
**IT'S NOT A MEETING!!**



The term *professional learning community (PLC)* first emerged among researchers as early as the 1960s when they offered the concept as an alternative to the isolation endemic to the teaching profession in the United States.



**EFFECTIVE  
COLLABORATION**



# WHY WORK COLLABORATIVELY?

A black and white photograph of Michael Jordan in a basketball jersey, celebrating a victory with his mouth open and arms raised. The image is used as a background for the quote.

**“TALENT WINS GAMES, BUT TEAMWORK AND  
INTELLIGENCE WINS CHAMPIONSHIPS.”**

**MICHAEL JORDAN**

© Lifepack Quotes





**COLLABORATIVE  
TEAMS**

# HOW THEY WORK

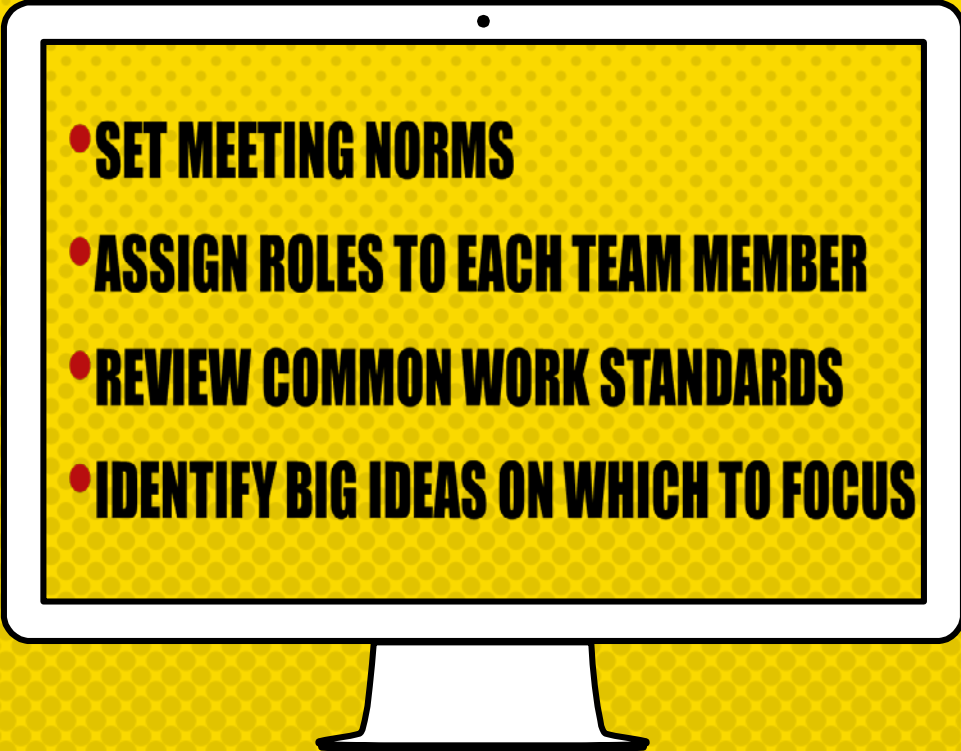
Divide  
the labor  
(co-laboring)

Embrace  
collective  
experiences  
or skills

Increase  
awareness  
of proven  
solutions



# THE FIRST MEETING

- 
- **SET MEETING NORMS**
  - **ASSIGN ROLES TO EACH TEAM MEMBER**
  - **REVIEW COMMON WORK STANDARDS**
  - **IDENTIFY BIG IDEAS ON WHICH TO FOCUS**

## **Collaborative teams are asked to:**

- Review common work standards/challenges
- Choose a focus
- Identify a specific goal  
(measurable, attainable, result focused, time bound, and for everyone)

**After you have made your goal....**



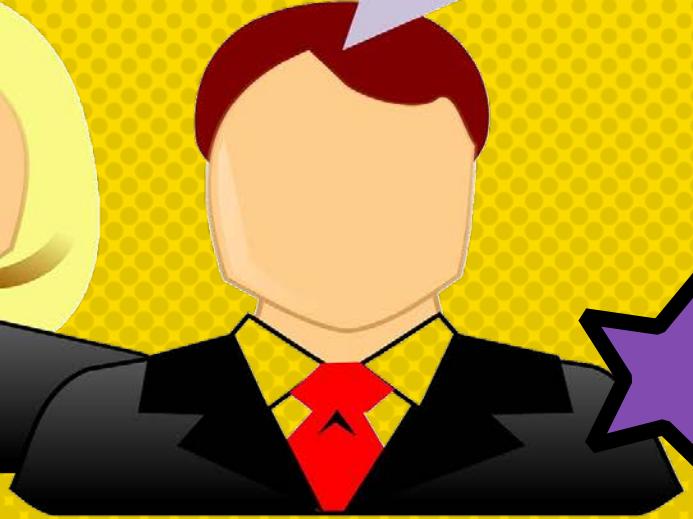
# THINGS WE'VE LEARNED



IT ISN'T  
NATURAL



GET  
STARTED



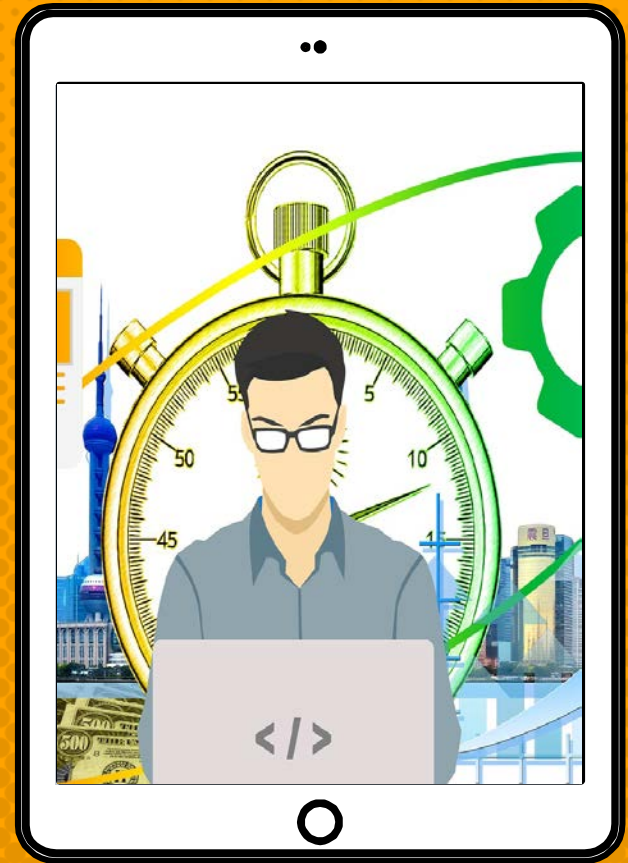
IT'S NOT  
ADDITIONAL  
WORK

- **Become more powerful secretaries**
- **Meet the needs**
- **Improve our work culture**
- **Build upon and sustain success**



**COLLABORATIVE  
SECRETARY  
TEAMS**

QUICKER, BETTER,  
EASIER SYSTEMS  
OF WORK DO  
MATTER.





Your collective best allows the focus to remain on the mission...

Graduating students who are ready to become self-reliant, healthy, caring contributors in your community.