



# St. Johns County Florida District Redistricting 2021

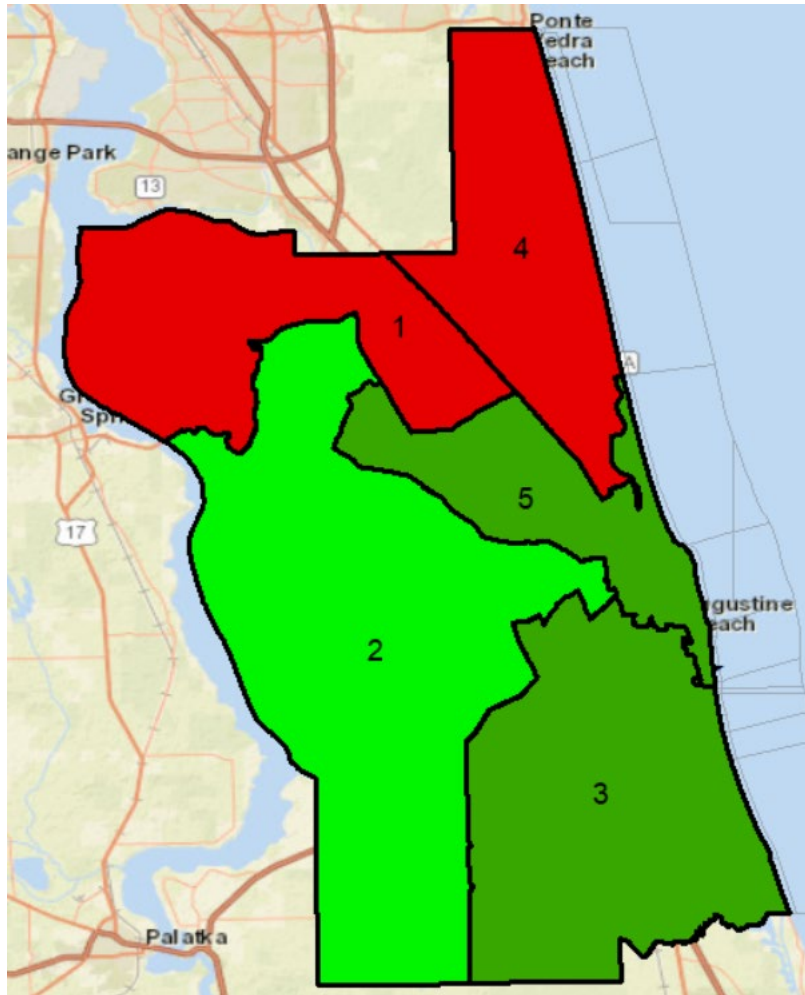
---



ARC Bridge Consulting & Training Inc.

[www.arcbridge.com](http://www.arcbridge.com)

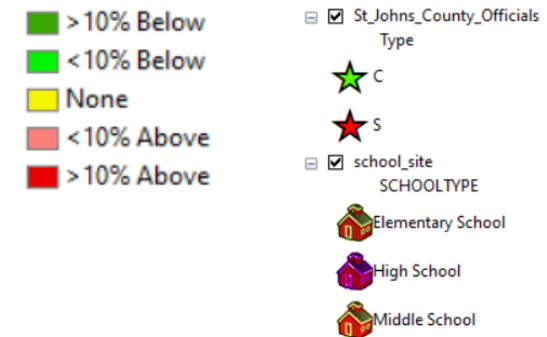
# Current Districts with 2020 Census Data



Total Population in 2020	273,425
Total Population in 2010	190,039
Gain in Total Population	83,386
Ideal Population in 2020	54,685
Ideal Population in 2010	38,008
Gain in Ideal Population	16,677

Name	Count	Optimum	Deviation	Deviation %
1	66,630	54,685	11,945	21.84%
2	51,231	54,685	-3,454	-6.32%
3	46,238	54,685	-8,447	-15.45%
4	64,205	54,685	9,520	17.41%
5	45,121	54,685	-9,564	-17.49%

Comparison with ideal population



# Comparison of 2020 with 2010 Districts

## 2010

District Summary

SJFL

District Count:	5
Total Population:	190,039
Maximum Deviation:	1,137
Average Deviation:	389
	1.02%
Minimum Count:	37,475
Maximum Count:	38,612

Name	Count	Optimum	Deviation	Deviation %
1	38,235	38,008	227	0.60%
2	38,612	38,008	604	1.59%
3	37,475	38,008	-533	-1.40%
4	38,148	38,008	140	0.37%
5	37,569	38,008	-439	-1.16%

## 2020

District Summary

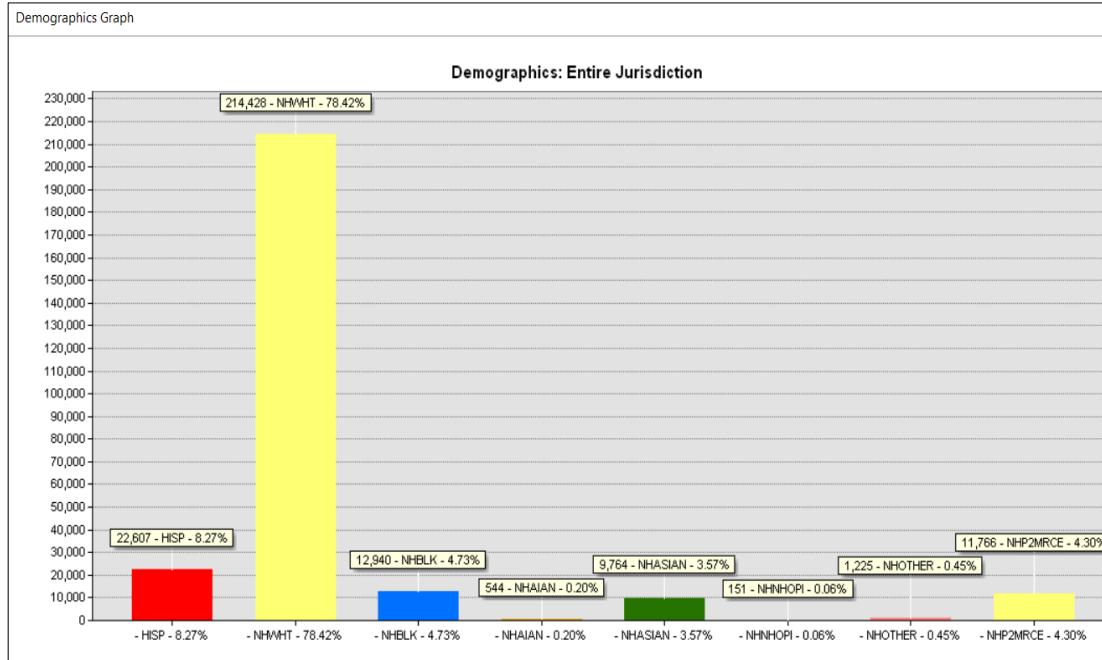
SJCFL-2020-AS\_IS

District Count:	5
Total Population:	273,425
Maximum Deviation:	21,509
Average Deviation:	8,586
	15.70%
Minimum Count:	45,121
Maximum Count:	66,630

Name	Count	Optimum	Deviation	Deviation %
1	66,630	54,685	11,945	21.84%
2	51,231	54,685	-3,454	-6.32%
3	46,238	54,685	-8,447	-15.45%
4	64,205	54,685	9,520	17.41%
5	45,121	54,685	-9,564	-17.49%

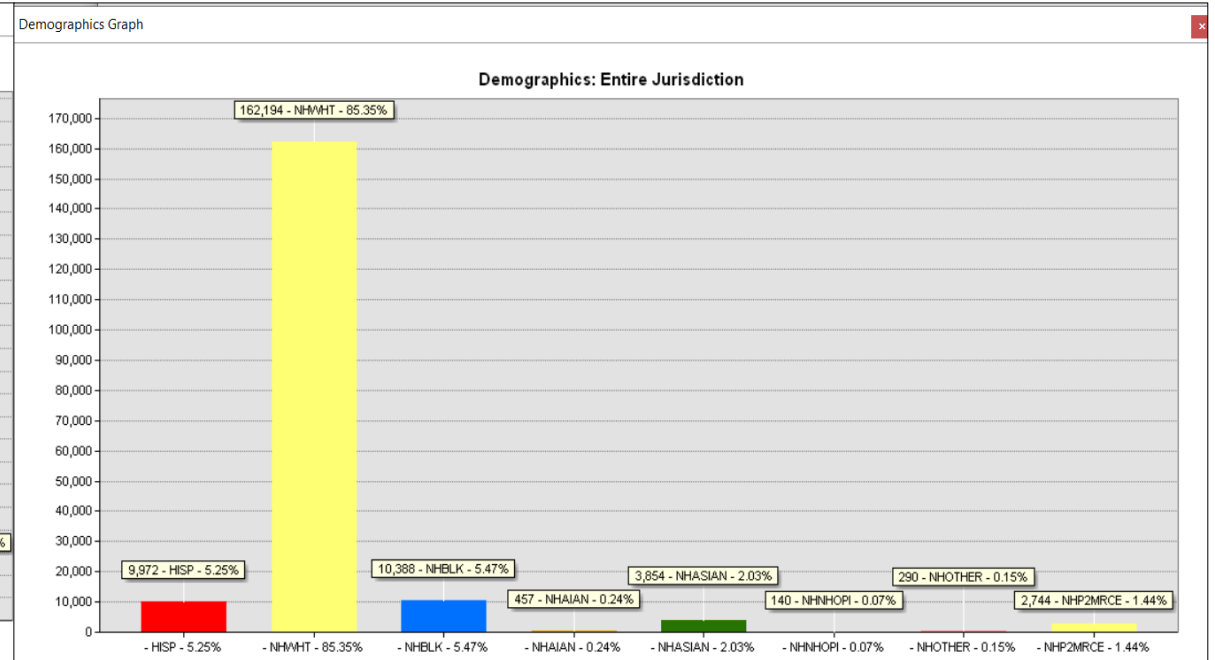
# Demographic Composition in 2020 and 2010

## 2020



HISPANIC– 8%  
 NH WHITE – 78%  
 NH BLACK – 5%  
 NH ASIAN – 4%

## 2010



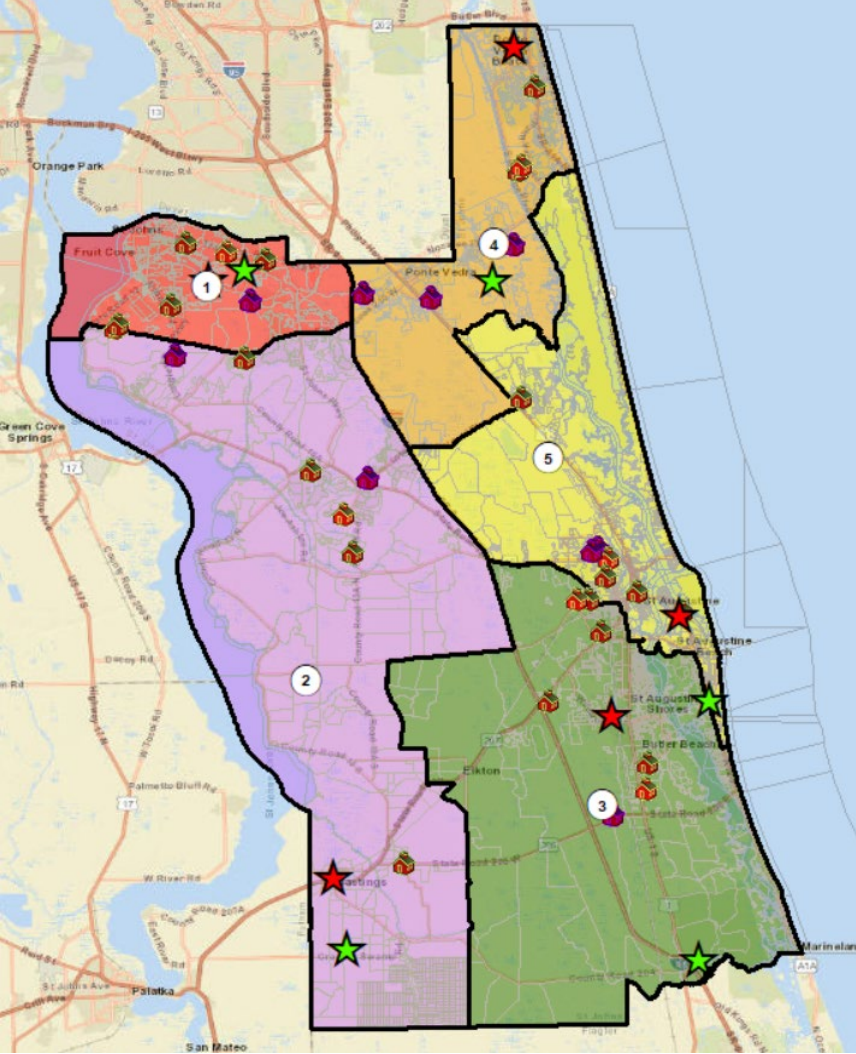
HISPANIC– 5%  
 NH WHITE – 85%  
 NH BLACK – 5%  
 NH ASIAN – 2%

# Plan Options

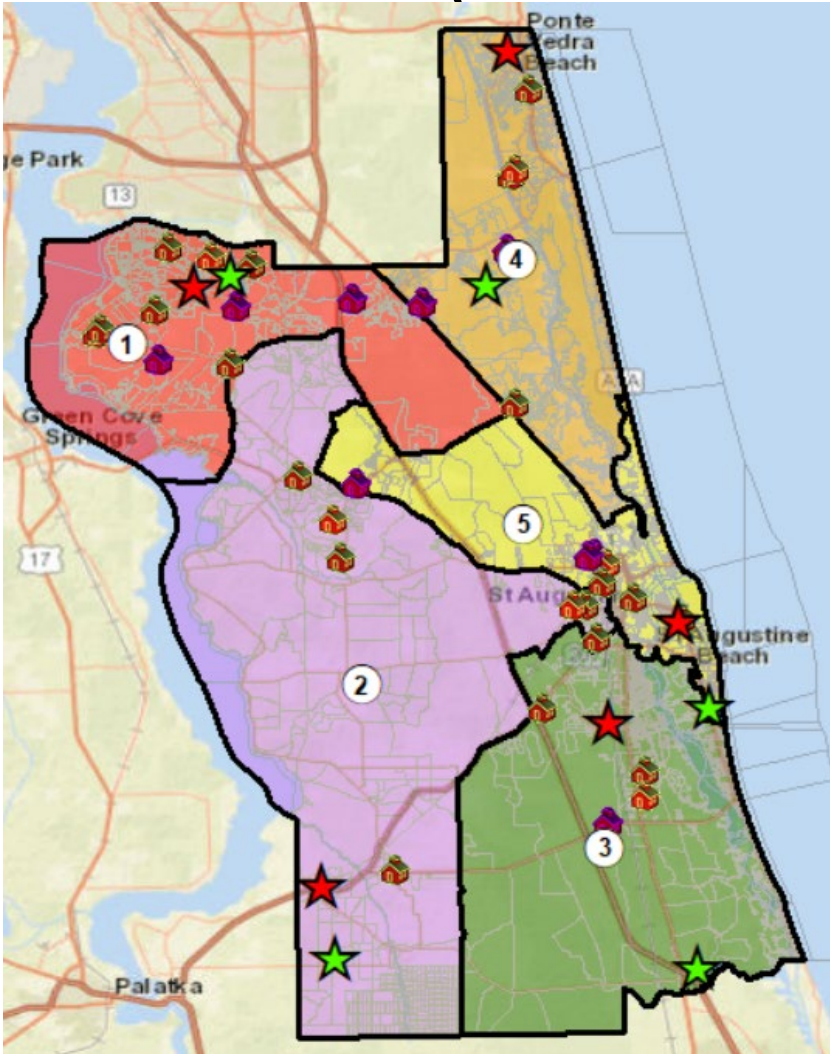
---

# Plan A vs Current Districts

Plan A (Max. Dev- 2.70%)



Current Districts (Max. Dev – 39.33%)



- St\_Johns\_County\_Officials Type
- ★ C
- ★ S
- school\_site SCHOOLTYPE
- 🏠 Elementary School
- 🏫 High School
- 🏫 Middle School
- Community Redevelopment Area
- Proposed District Boundaries
-

# Plan A

## Plan A

District Summary

SJCFL\_Rev  
Plan A

District Count:	5
Total Population:	273,425
Maximum Deviation:	1,476
	<b>2.70%</b>
Average Deviation:	446
	0.82%
Minimum Count:	53,912
Maximum Count:	55,388

Name	Count	Optimum	Deviation	Deviation %
1	54,786	54,685	101	0.18%
2	54,997	54,685	312	0.57%
3	53,912	54,685	-773	-1.41%
4	55,388	54,685	703	1.29%
5	54,342	54,685	-343	-0.63%

## Current Districts

District Summary

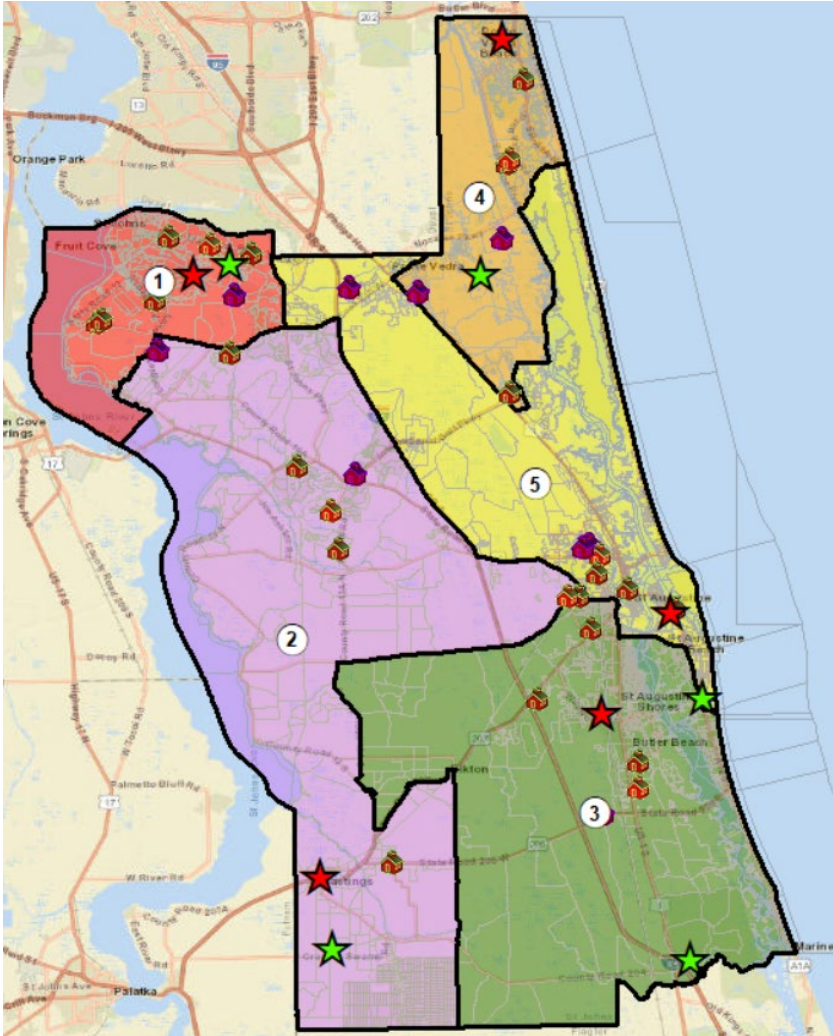
SJCFL-2020-  
AS\_IS

District Count:	5
Total Population:	273,425
Maximum Deviation:	21,509
	<b>39.33%</b>
Average Deviation:	8,586
	15.70%
Minimum Count:	45,121
Maximum Count:	66,630

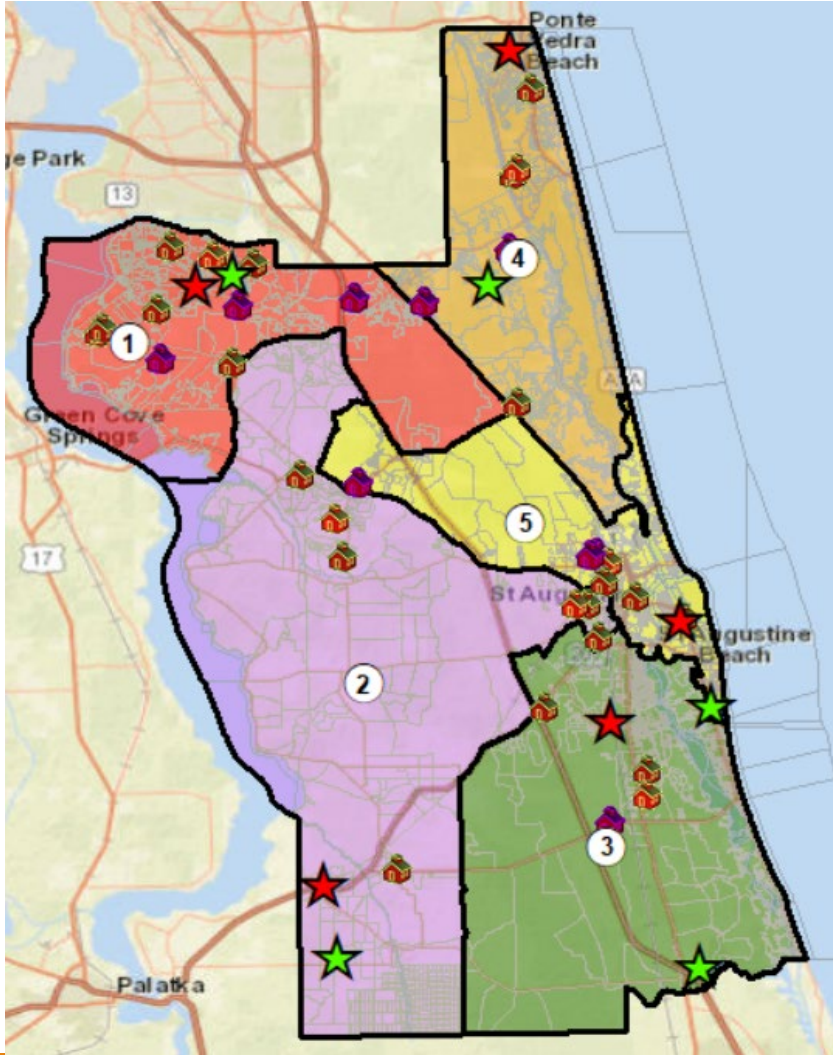
Name	Count	Optimum	Deviation	Deviation %
1	66,630	54,685	11,945	21.84%
2	51,231	54,685	-3,454	-6.32%
3	46,238	54,685	-8,447	-15.45%
4	64,205	54,685	9,520	17.41%
5	45,121	54,685	-9,564	-17.49%

# Plan B vs Current Districts

Plan B (Max. Dev- 1.62%)



Current Districts (Max. Dev – 39.33%)



- St\_Johns\_County\_Officials Type
- ★ C
- ★ S
- school\_site SCHOOLTYPE
- Elementary School
- High School
- Middle School
- Community Redevelopment Area
- Proposed District Boundaries
-



# Plan B vs Current Districts

## Plan B

District Summary

SJCFL\_Rev  
Plan B

District Count: 5  
Total Population: 273,425  
Maximum Deviation: 885  
Average Deviation: 313  
Minimum Count: 54,264  
Maximum Count: 55,149

**1.62%**

Name	Count	Optimum	Deviation	Deviation %
1	54,698	54,685	13	0.02%
2	54,264	54,685	-421	-0.77%
3	54,324	54,685	-361	-0.66%
4	54,990	54,685	305	0.56%
5	55,149	54,685	464	0.85%

## Current Districts

District Summary

SJCFL-2020-  
AS\_IS

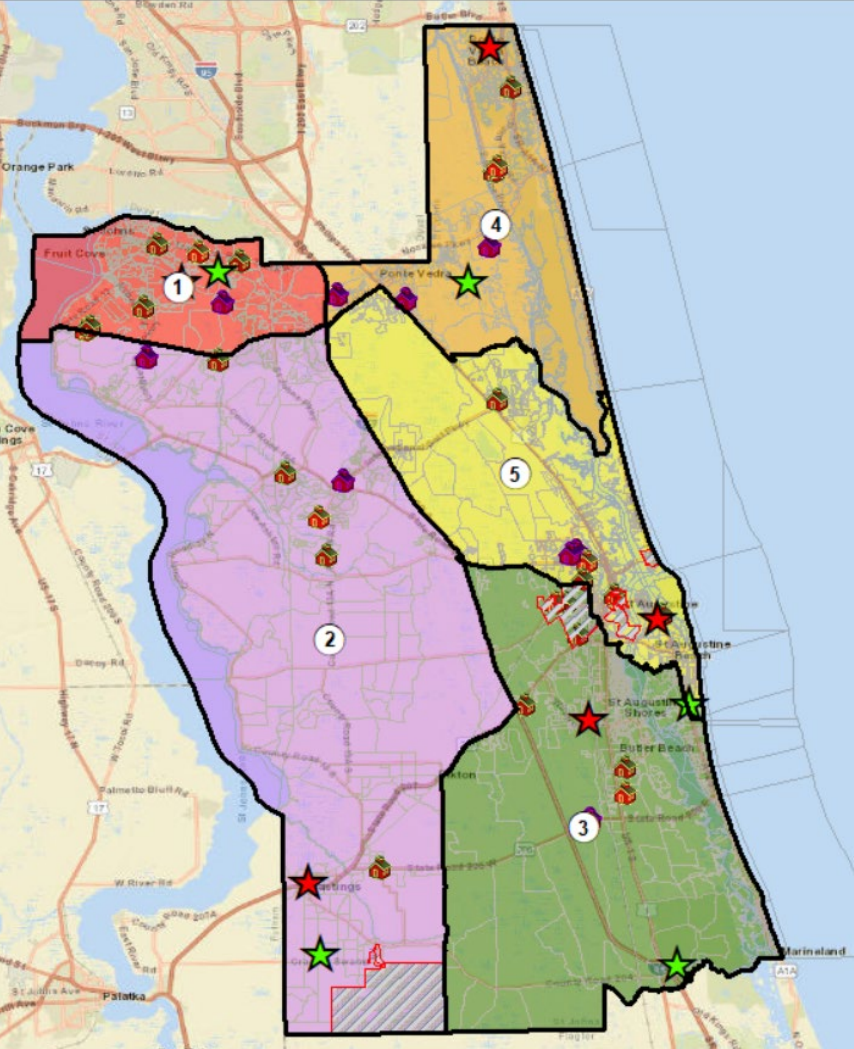
District Count: 5  
Total Population: 273,425  
Maximum Deviation: 21,509  
Average Deviation: 8,586  
Minimum Count: 45,121  
Maximum Count: 66,630

**39.33%**

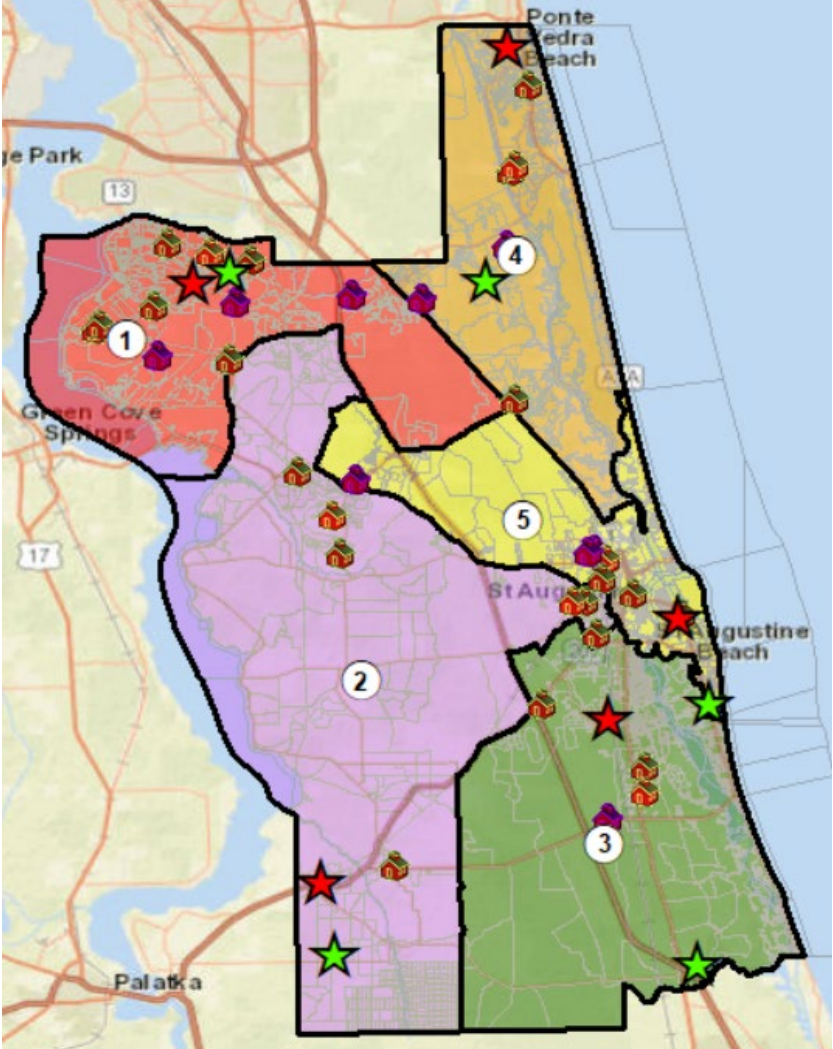
Name	Count	Optimum	Deviation	Deviation %
1	66,630	54,685	11,945	21.84%
2	51,231	54,685	-3,454	-6.32%
3	46,238	54,685	-8,447	-15.45%
4	64,205	54,685	9,520	17.41%
5	45,121	54,685	-9,564	-17.49%

# Plan C vs Current Districts

Plan C (Max. Dev- 2.70%)



Current Districts (Max. Dev – 39.33%)



- St\_Johns\_County\_Officials Type
- ★ C
- ★ S
- school\_site SCHOOLTYPE
- 🏠 Elementary School
- 🎓 High School
- 🏫 Middle School
- Community Redevelopment Area
- Proposed District Boundaries
-

# Plan C

## Plan C

District Summary

SJCFL-PLAN-C

District Count:	5
Total Population:	273,425
Maximum Deviation:	1,475
Average Deviation:	398
Minimum Count:	53,824
Maximum Count:	55,299

2.70%

Name	Count	Optimum	Deviation	Deviation %
1	54,786	54,685	101	0.18%
2	55,299	54,685	614	1.12%
3	54,965	54,685	280	0.51%
4	54,551	54,685	-134	-0.25%
5	53,824	54,685	-861	-1.57%

## Current Districts

District Summary

SJCFL-2020-AS\_IS

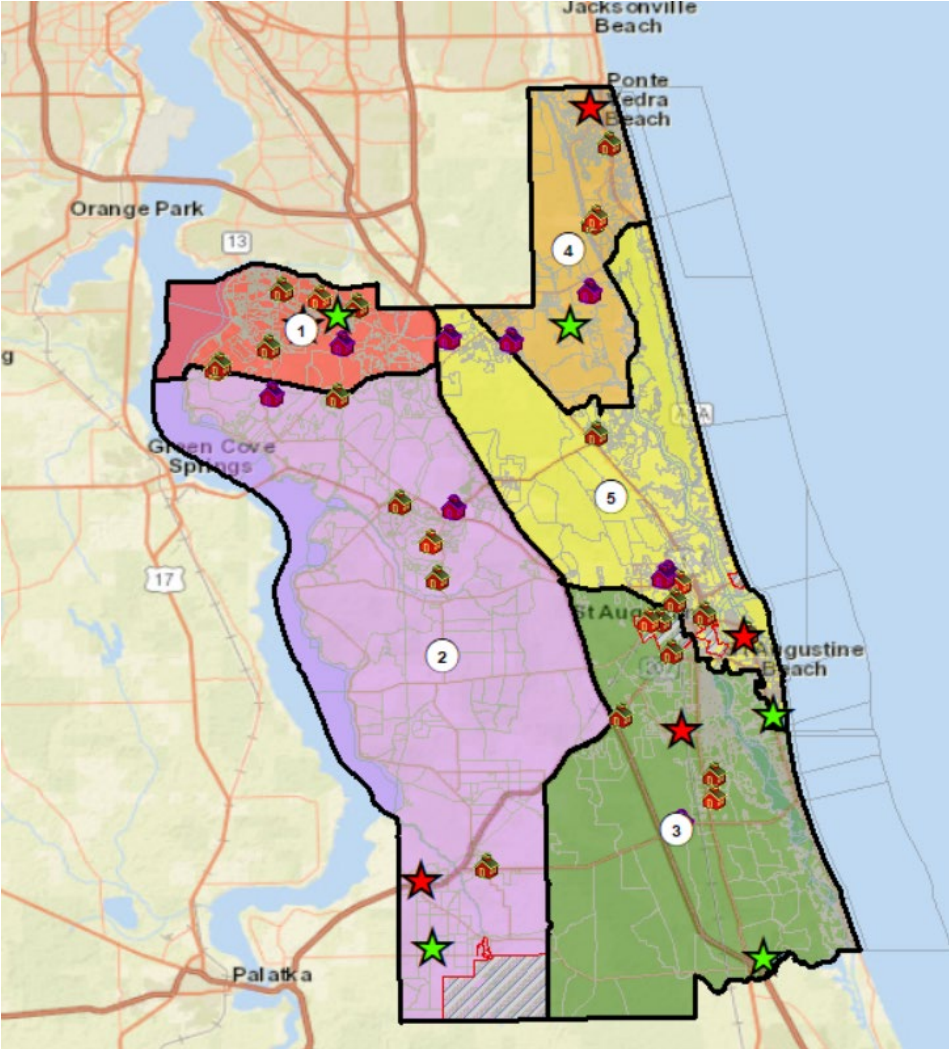
District Count:	5
Total Population:	273,425
Maximum Deviation:	21,509
Average Deviation:	8,586
Minimum Count:	45,121
Maximum Count:	66,630

39.33%

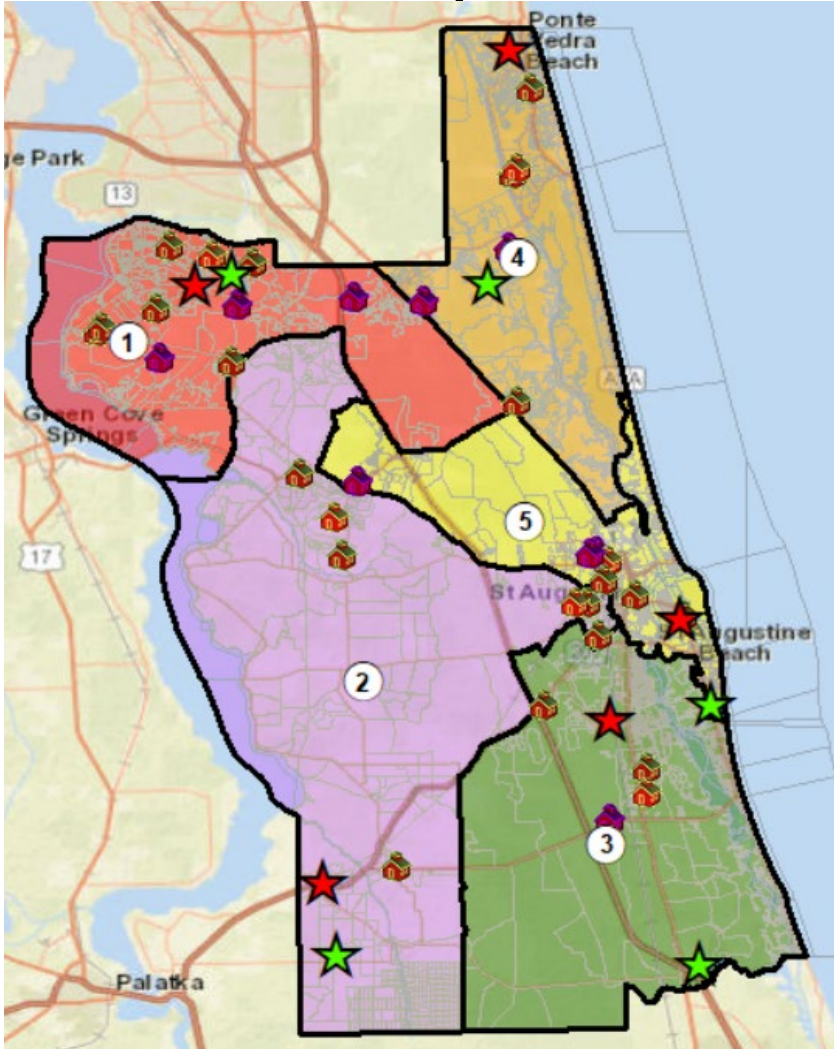
Name	Count	Optimum	Deviation	Deviation %
1	66,630	54,685	11,945	21.84%
2	51,231	54,685	-3,454	-6.32%
3	46,238	54,685	-8,447	-15.45%
4	64,205	54,685	9,520	17.41%
5	45,121	54,685	-9,564	-17.49%

# Plan D vs Current Districts

Plan D (Max. Dev- 2.62%)



Current Districts (Max. Dev – 39.33%)



- St\_Johns\_County\_Officials Type
- ★ C
- ★ S
- school\_site SCHOOLTYPE
- 🏠 Elementary School
- 🏫 High School
- 🏫 Middle School
- Community Redevelopment Area
- Proposed District Boundaries
-

# Plan D

## Plan D

District Summary

**District Summary**

SJCFL-Plan D

District Count:	5
Total Population:	273,425
Maximum Deviation:	1,434
	<b>2.62%</b>
Average Deviation:	323
	0.59%
Minimum Count:	53,919
Maximum Count:	55,353

Name	Count	Optimum	Deviation	Deviation %
1	54,786	54,685	101	0.18%
2	55,353	54,685	668	1.22%
3	54,723	54,685	38	0.07%
4	53,919	54,685	-766	-1.40%
5	54,644	54,685	-41	-0.07%

## Current Districts

District Summary

**District Summary**

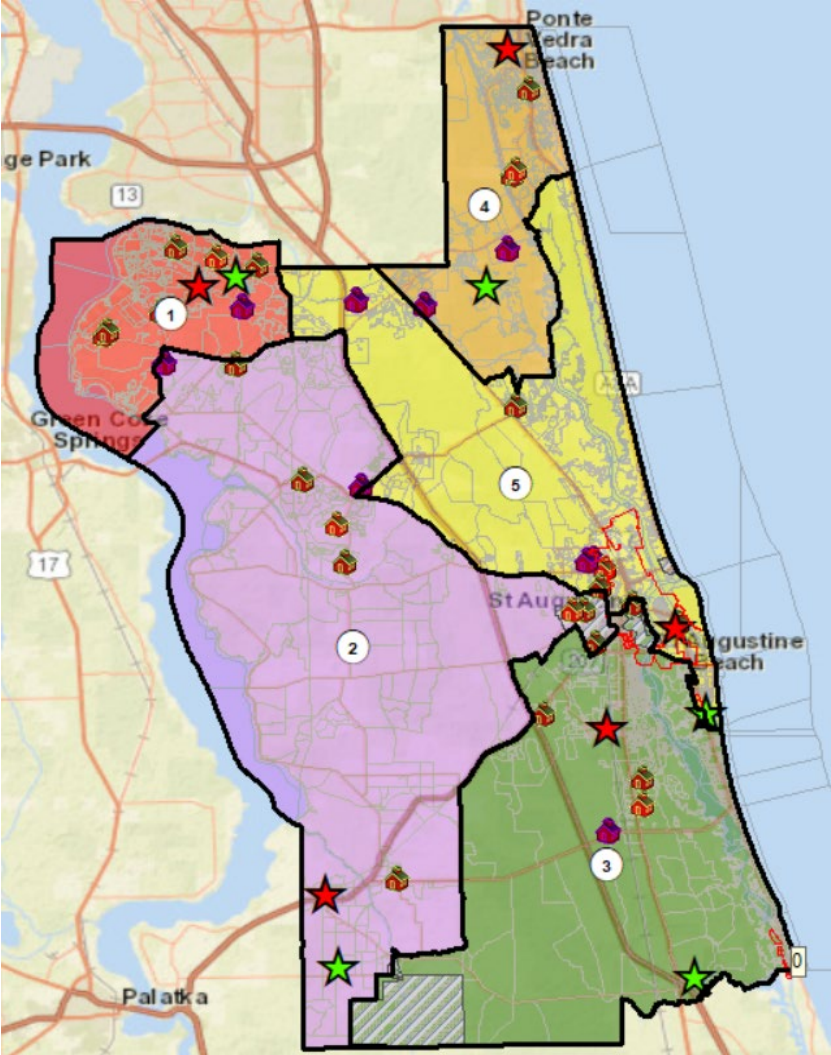
SJCFL-2020-AS\_IS

District Count:	5
Total Population:	273,425
Maximum Deviation:	21,509
	<b>39.33%</b>
Average Deviation:	8,586
	15.70%
Minimum Count:	45,121
Maximum Count:	66,630

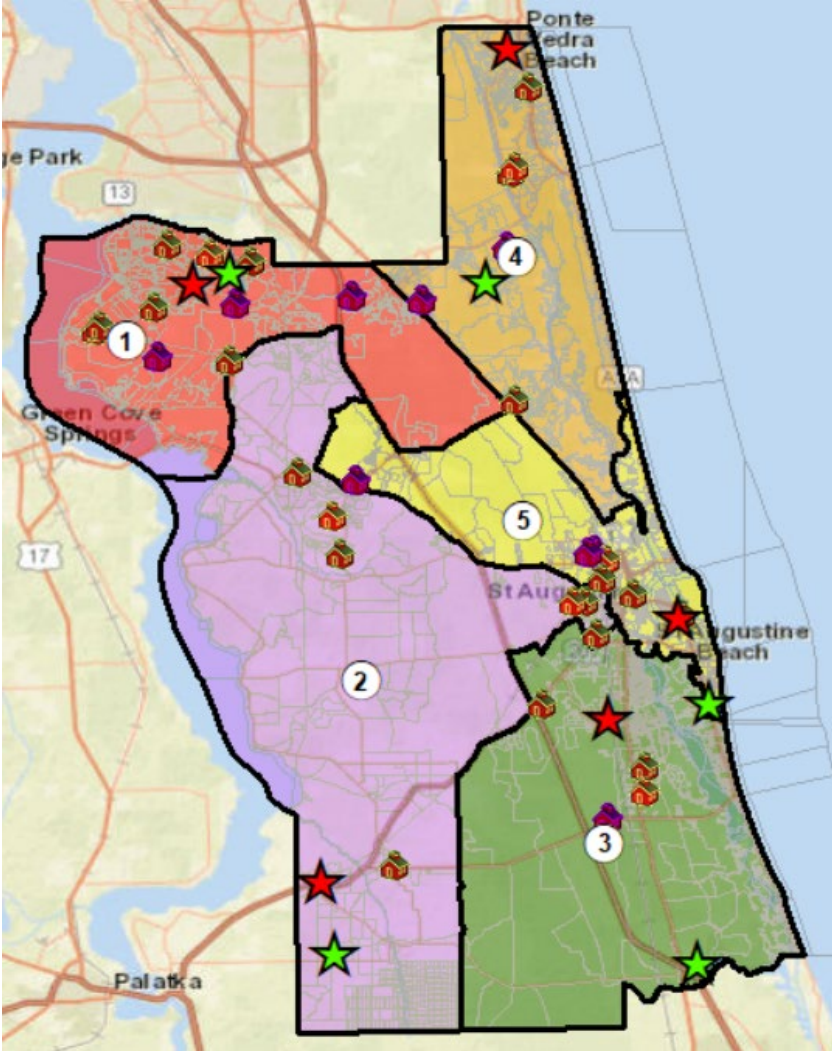
Name	Count	Optimum	Deviation	Deviation %
1	66,630	54,685	11,945	21.84%
2	51,231	54,685	-3,454	-6.32%
3	46,238	54,685	-8,447	-15.45%
4	64,205	54,685	9,520	17.41%
5	45,121	54,685	-9,564	-17.49%

# Plan E vs Current Districts

Plan E (Max. Dev- 2.48%)



Current Districts (Max. Dev – 39.33%)



- St\_Johns\_County\_Officials Type
- ★ C
- ★ S
- school\_site SCHOOLTYPE
- Elementary School
- High School
- Middle School
- Community Redevelopment Area
- Proposed District Boundaries

# Plan E

## Plan E

District Summary

1 of 1 100% Find | Next

### District Summary

SJFL-Plan-E

District Count:	5
Total Population:	273,425
Maximum Deviation:	1,354
Average Deviation:	528
Minimum Count:	54,033
Maximum Count:	55,387

2.48%

Name	Count	Optimum	Deviation	Deviation %
1	55,387	54,685	702	1.28%
2	54,203	54,685	-482	-0.88%
3	55,302	54,685	617	1.13%
4	54,500	54,685	-185	-0.34%
5	54,033	54,685	-652	-1.19%

## Current Districts

District Summary

1 of 1 100% Find | Next

### District Summary

SJCFL-2020-AS\_IS

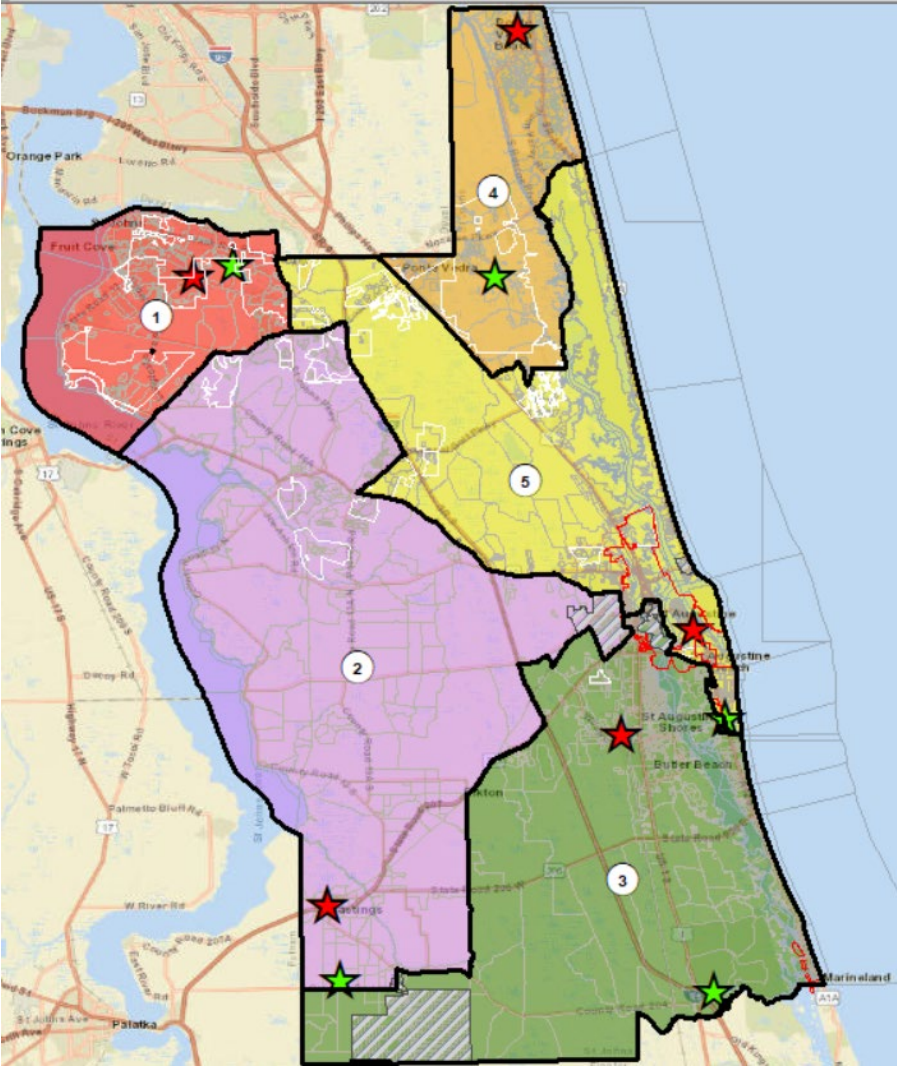
District Count:	5
Total Population:	273,425
Maximum Deviation:	21,509
Average Deviation:	8,586
Minimum Count:	45,121
Maximum Count:	66,630

39.33%

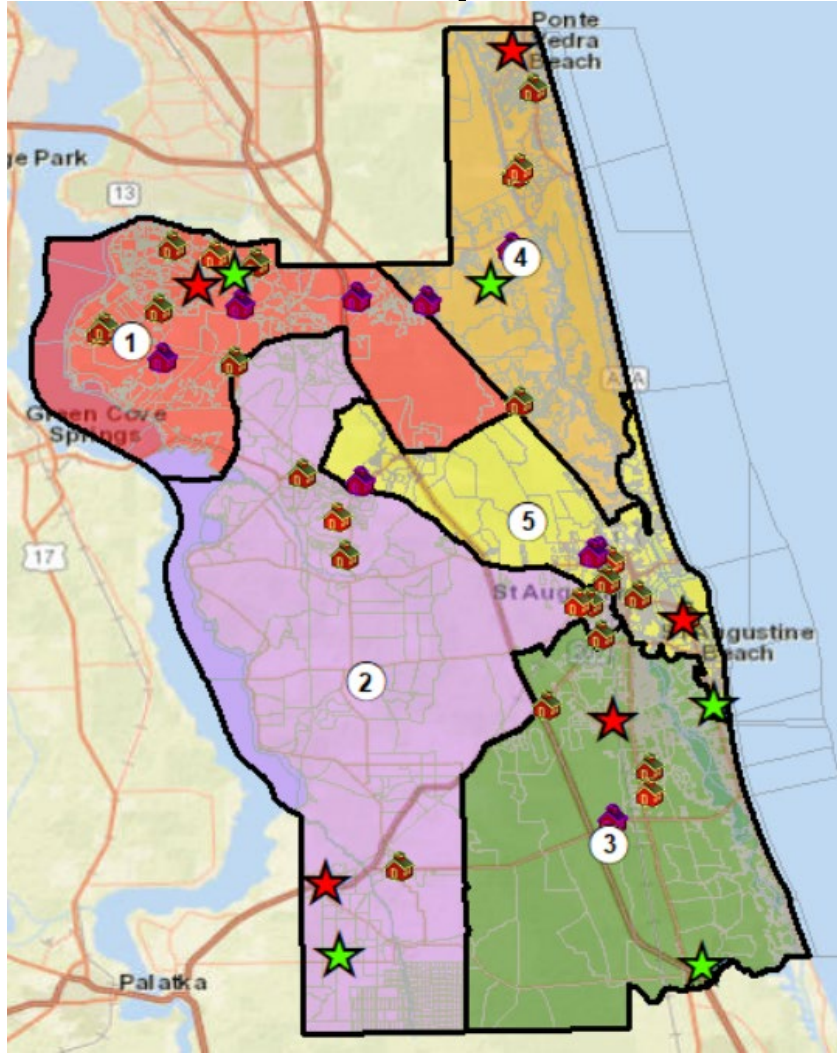
Name	Count	Optimum	Deviation	Deviation %
1	66,630	54,685	11,945	21.84%
2	51,231	54,685	-3,454	-6.32%
3	46,238	54,685	-8,447	-15.45%
4	64,205	54,685	9,520	17.41%
5	45,121	54,685	-9,564	-17.49%

# Plan E-1 vs Current Districts

Plan E-1 (Max. Dev- 4.10%)



Current Districts (Max. Dev – 39.33%)



- St\_Johns\_County\_Officials Type
- ★ C
- ★ S
- school\_site SCHOOLTYPE
- 🏠 Elementary School
- 🎓 High School
- 🏫 Middle School
- Community Redevelopment Area
- Proposed District Boundaries
-



# Plan E-1

## Plan E-1

District Summary

1 of 1

100%

Find | Next

### District Summary

SJFL-Plan-E

District Count:	5
Total Population:	273,425
Maximum Deviation:	2,240
	<b>4.10%</b>
Average Deviation:	747
	1.37%
Minimum Count:	53,655
Maximum Count:	55,895

Name	Count	Optimum	Deviation	Deviation %
1	55,895	54,685	1,210	2.21%
2	53,655	54,685	-1,030	-1.88%
3	55,342	54,685	657	1.20%
4	54,500	54,685	-185	-0.34%
5	54,033	54,685	-652	-1.19%

## Current Districts

District Summary

1 of 1

100%

Find | Next

### District Summary

SJCFL-2020-AS\_IS

District Count:	5
Total Population:	273,425
Maximum Deviation:	21,509
	<b>39.33%</b>
Average Deviation:	8,586
	15.70%
Minimum Count:	45,121
Maximum Count:	66,630

Name	Count	Optimum	Deviation	Deviation %
1	66,630	54,685	11,945	21.84%
2	51,231	54,685	-3,454	-6.32%
3	46,238	54,685	-8,447	-15.45%
4	64,205	54,685	9,520	17.41%
5	45,121	54,685	-9,564	-17.49%

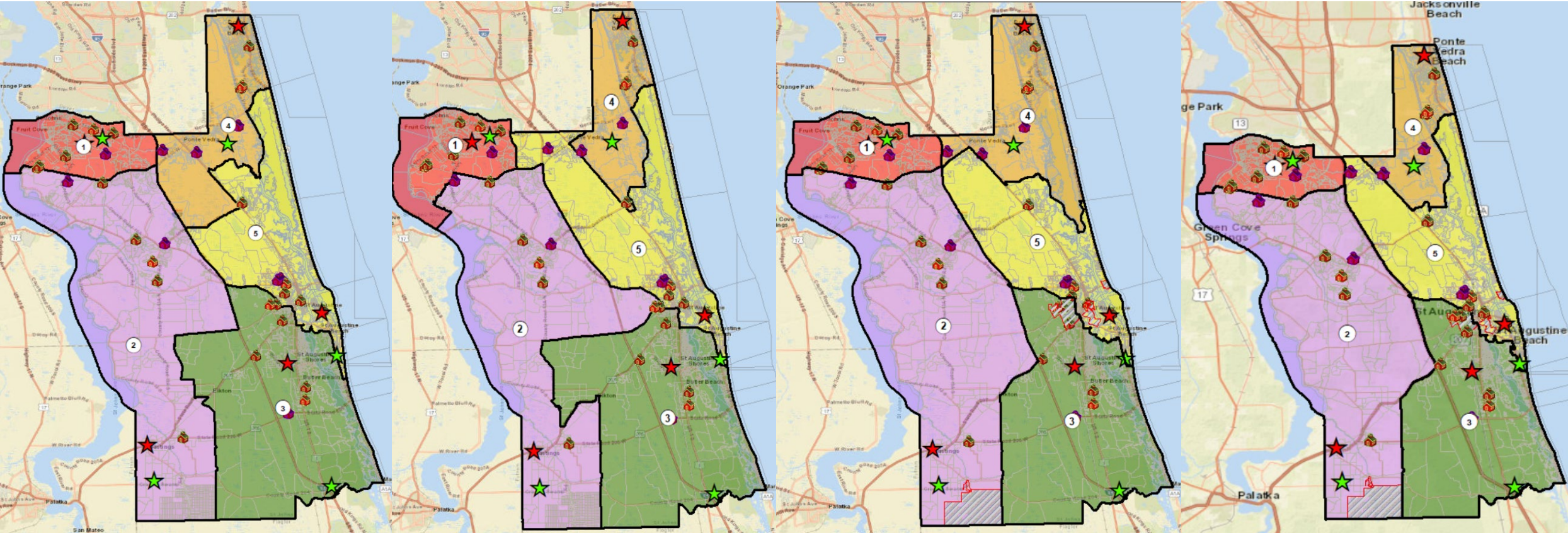
# Comparative Analysis of Plans A, B, C and D

Plan A - Max Dev – 2.70%

Plan B - Max Dev – 1.62%

Plan C - Max Dev – 2.70%

Plan D - Max Dev – 2.62%

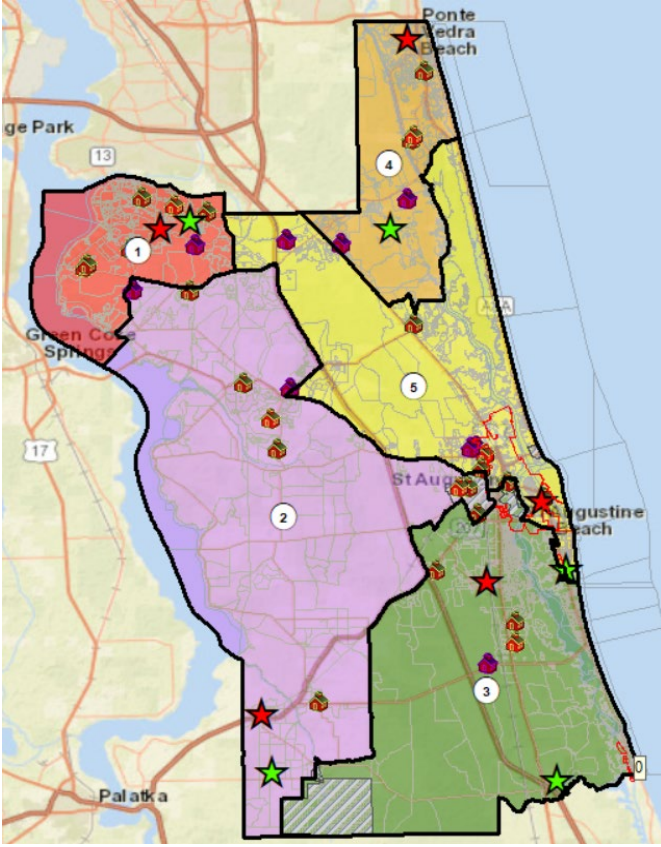
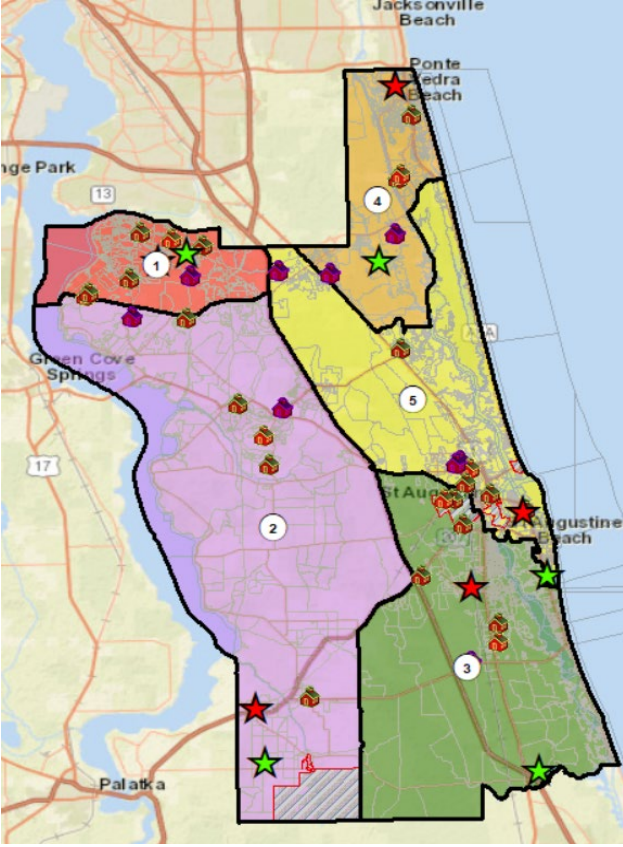
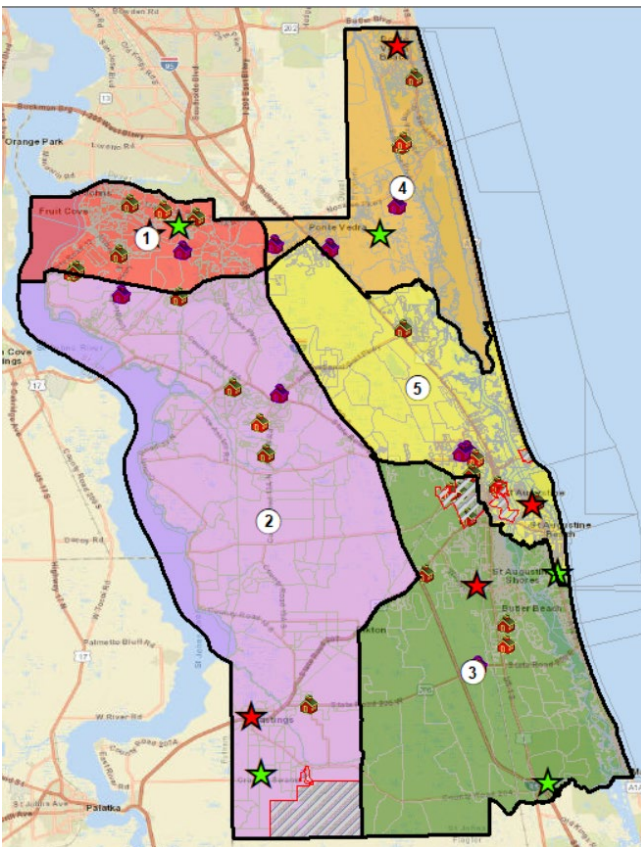
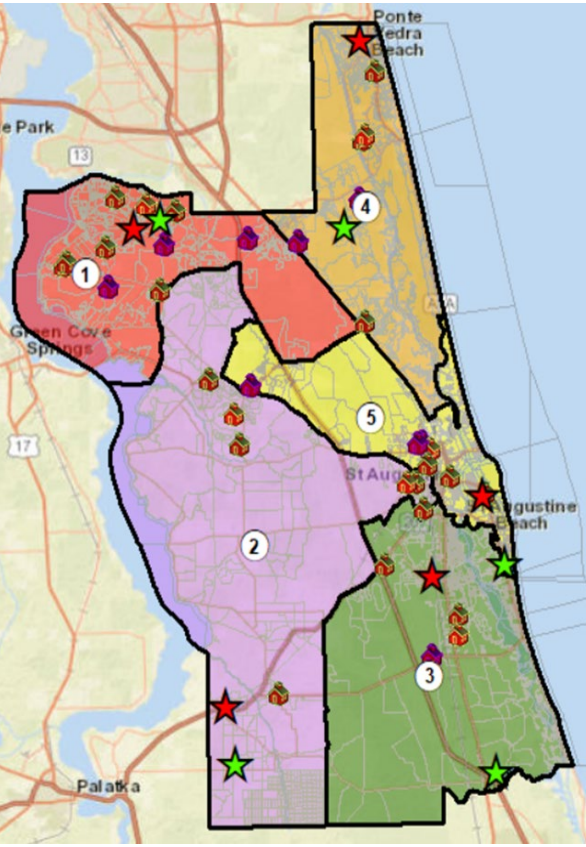


# Comparative Analysis of Current Districts and Plans C, D and E

Current - Max Dev – 39.33% Plan C - Max Dev – 2.70%

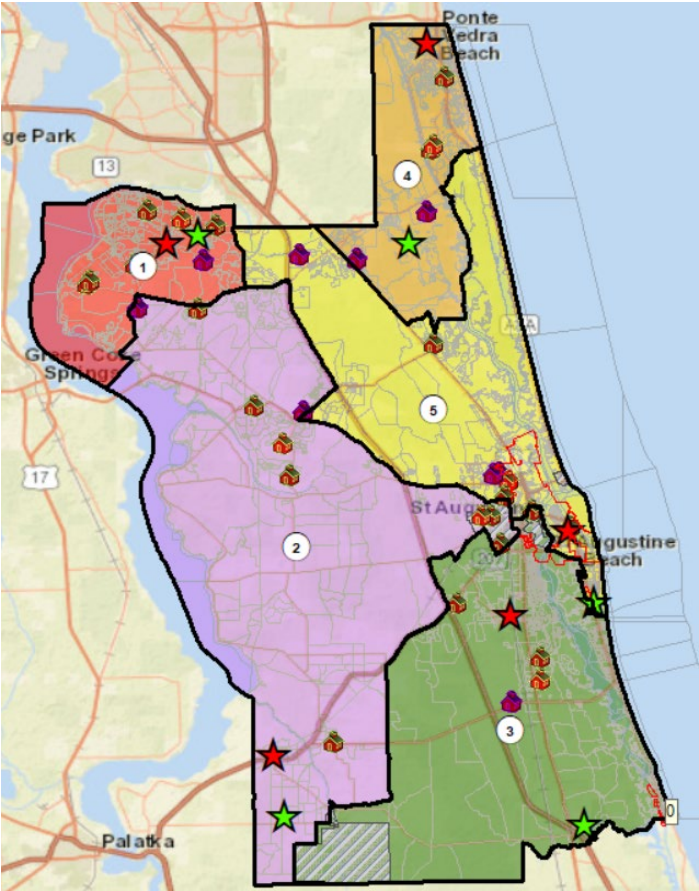
Plan D - Max Dev – 2.62%

Plan E - Max Dev – 2.48%

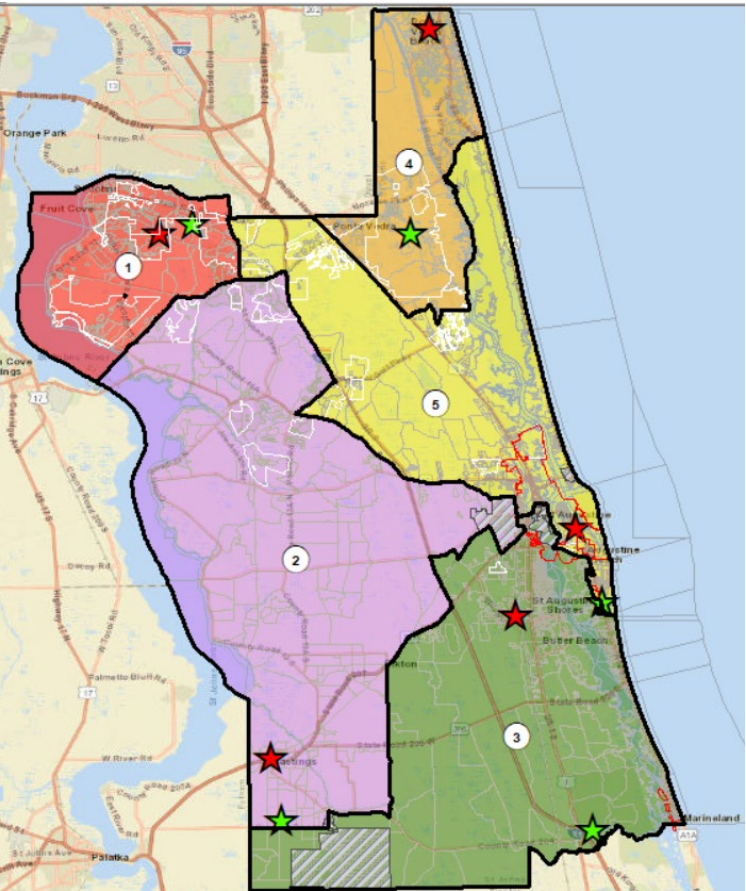


# Comparative Analysis of Current Districts and Plans E and E1

Plan E - Max Dev – 2.48%



Plan E-1 - Max Dev – 4.10%



# Current Districts and Plan A

Current Districts with 2020 Population

	Hispanic	NH White	NH Black	NH AIAN	NH Asian	NH NHOPI	NH Other	NH - 2+ Race	Total
1	6378	48790	2935	132	4,574	44	339	3438	66,630
2	5,094	36,367	5,489	130	1,498	31	231	2,391	51,231
3	3,172	39,304	1,105	106	655	26	193	1,677	46,238
4	4,423	53,393	1,234	77	2,248	38	259	2,533	64,205
5	3,540	36,574	2,177	99	789	12	203	1,727	45,121
									273,425
Racial Ethnic Composition of Each District %									
	Hispanic %	NH White%	NH Black%	NH AIAN%	NH Asian%	NH NHOPI %	NH Other%	NH - 2+ Race%	Total%
1	9.57%	73.23%	4.40%	0.20%	6.86%	0.07%	0.51%	5.16%	100.00%
2	9.94%	70.99%	10.71%	0.25%	2.92%	0.06%	0.45%	4.67%	100.00%
3	6.86%	85.00%	2.39%	0.23%	1.42%	0.06%	0.42%	3.63%	100.00%
4	6.89%	83.16%	1.92%	0.12%	3.50%	0.06%	0.40%	3.95%	100.00%
5	7.85%	81.06%	4.82%	0.22%	1.75%	0.03%	0.45%	3.83%	100.00%

Plan A

	Hispanic	NH White	NH Black	NH AIAN	NH Asian	NH NHOPI	NH Other	NH - 2+ Race	Total
1	5,092	40,119	2,359	96	3,945	32	300	2,843	54,786
2	5,680	41,494	3,007	122	1,813	39	231	2,611	54,997
3	3,711	43,542	3,559	129	728	30	233	1,980	53,912
4	3,877	45,615	1,164	73	2,199	36	205	2,219	55,388
5	4,247	43,658	2,851	124	1,079	14	256	2,113	54,342
									273,425
Racial Ethnic Composition of Each District %									
	Hispanic %	NH White%	NH Black%	NH AIAN%	NH Asian%	NH NHOPI %	NH Other%	NH - 2+ Race%	Total%
1	9.29%	73.23%	4.31%	0.18%	7.20%	0.06%	0.55%	5.19%	100.00%
2	10.33%	75.45%	5.47%	0.22%	3.30%	0.07%	0.42%	4.75%	100.00%
3	6.88%	80.76%	6.60%	0.24%	1.35%	0.06%	0.43%	3.67%	100.00%
4	7.00%	82.36%	2.10%	0.13%	3.97%	0.06%	0.37%	4.01%	100.00%
5	7.82%	80.34%	5.25%	0.23%	1.99%	0.03%	0.47%	3.89%	100.00%

# Current Districts and Plan B

Current Districts with 2020 Population

	Hispanic	NH White	NH Black	NH AIAN	NH Asian	NH NHOPI	NH Other	NH - 2+ Race	Total
1	6378	48790	2935	132	4,574	44	339	3438	66,630
2	5,094	36,367	5,489	130	1,498	31	231	2,391	51,231
3	3,172	39,304	1,105	106	655	26	193	1,677	46,238
4	4,423	53,393	1,234	77	2,248	38	259	2,533	64,205
5	3,540	36,574	2,177	99	789	12	203	1,727	45,121
									273,425
Racial Ethnic Composition of Each District %									
	Hispanic c%	NH White%	NH Black%	NH AIAN%	NH Asian%	NH NHOPI %	NH Other%	NH - 2+ Race%	Total%
1	9.57%	73.23%	4.40%	0.20%	6.86%	0.07%	0.51%	5.16%	100.00%
2	9.94%	70.99%	10.71%	0.25%	2.92%	0.06%	0.45%	4.67%	100.00%
3	6.86%	85.00%	2.39%	0.23%	1.42%	0.06%	0.42%	3.63%	100.00%
4	6.89%	83.16%	1.92%	0.12%	3.50%	0.06%	0.40%	3.95%	100.00%
5	7.85%	81.06%	4.82%	0.22%	1.75%	0.03%	0.45%	3.83%	100.00%

Plan B

	Hispanic	NH White	NH Black	NH AIAN	NH Asian	NH NHOPI	NH Other	NH - 2+ Race	Total
1	5,049	40,494	2,273	94	3,669	39	298	2,782	54,698
2	5,533	40,704	3,322	124	1,734	33	233	2,581	54,264
3	3,701	44,390	3,173	125	711	31	227	1,966	54,324
4	3,715	46,061	1,040	54	1,803	29	207	2,081	54,990
5	4,609	42,779	3,132	147	1,847	19	260	2,356	55,149
									273,425
Racial Ethnic Composition of Each District %									
	Hispanic %	NH White%	NH Black%	NH AIAN%	NH Asian%	NH NHOPI %	NH Other%	NH - 2+ Race%	Total%
1	9.23%	74.03%	4.16%	0.17%	6.71%	0.07%	0.54%	5.09%	100.00%
2	10.20%	75.01%	6.12%	0.23%	3.20%	0.06%	0.43%	4.76%	100.00%
3	6.81%	81.71%	5.84%	0.23%	1.31%	0.06%	0.42%	3.62%	100.00%
4	6.76%	83.76%	1.89%	0.10%	3.28%	0.05%	0.38%	3.78%	100.00%
5	8.36%	77.57%	5.68%	0.27%	3.35%	0.03%	0.47%	4.27%	100.00%

# Current Districts and Plan C

Current Districts with 2020 Population

	Hispanic	NH White	NH Black	NH AIAN	NH Asian	NH NHOPI	NH Other	NH - 2+ Race	Total
1	6378	48790	2935	132	4,574	44	339	3438	66,630
2	5,094	36,367	5,489	130	1,498	31	231	2,391	51,231
3	3,172	39,304	1,105	106	655	26	193	1,677	46,238
4	4,423	53,393	1,234	77	2,248	38	259	2,533	64,205
5	3,540	36,574	2,177	99	789	12	203	1,727	45,121
									273,425
Racial Ethnic Composition of Each District %									
	Hispanic %	NH White%	NH Black%	NH AIAN%	NH Asian%	NH NHOPI %	NH Other%	NH - 2+ Race%	Total%
1	9.57%	73.23%	4.40%	0.20%	6.86%	0.07%	0.51%	5.16%	100.00%
2	9.94%	70.99%	10.71%	0.25%	2.92%	0.06%	0.45%	4.67%	100.00%
3	6.86%	85.00%	2.39%	0.23%	1.42%	0.06%	0.42%	3.63%	100.00%
4	6.89%	83.16%	1.92%	0.12%	3.50%	0.06%	0.40%	3.95%	100.00%
5	7.85%	81.06%	4.82%	0.22%	1.75%	0.03%	0.45%	3.83%	100.00%

Plan C

	Hispanic	NH White	NH Black	NH AIAN	NH Asian	NH NHOPI	NH Other	NH - 2+ Race	Total
1	5,092	40,119	2,359	96	3,945	32	300	2,843	54,786
2	5,713	41,740	3,013	123	1,814	41	231	2,624	55,299
3	3,839	43,975	4,041	123	721	29	238	1,999	54,965
4	3,691	45,392	1,003	54	2,004	39	211	2,157	54,551
5	4,272	43,202	2,524	148	1,280	10	245	2,143	53,824
									273,425
Racial Ethnic Composition of Each District %									
	Hispanic %	NH White%	NH Black%	NH AIAN%	NH Asian%	NH NHOPI %	NH Other%	NH - 2+ Race%	Total%
1	9.29%	73.23%	4.31%	0.18%	7.20%	0.06%	0.55%	5.19%	100.00%
2	10.33%	75.48%	5.45%	0.22%	3.28%	0.07%	0.42%	4.75%	100.00%
3	6.98%	80.01%	7.35%	0.22%	1.31%	0.05%	0.43%	3.64%	100.00%
4	6.77%	83.21%	1.84%	0.10%	3.67%	0.07%	0.39%	3.95%	100.00%
5	7.94%	80.27%	4.69%	0.27%	2.38%	0.02%	0.46%	3.98%	100.00%

# Current Districts and Plan D

Current Districts with 2020 Population

	Hispanic	NH White	NH Black	NH AIAN	NH Asian	NH NHOPI	NH Other	NH - 2+ Race	Total
1	6378	48790	2935	132	4,574	44	339	3438	66,630
2	5,094	36,367	5,489	130	1,498	31	231	2,391	51,231
3	3,172	39,304	1,105	106	655	26	193	1,677	46,238
4	4,423	53,393	1,234	77	2,248	38	259	2,533	64,205
5	3,540	36,574	2,177	99	789	12	203	1,727	45,121
									273,425
Racial Ethnic Composition of Each District %									
	Hispanic %	NH White%	NH Black%	NH AIAN%	NH Asian%	NH NHOPI %	NH Other%	NH - 2+ Race%	Total%
1	9.57%	73.23%	4.40%	0.20%	6.86%	0.07%	0.51%	5.16%	100.00%
2	9.94%	70.99%	10.71%	0.25%	2.92%	0.06%	0.45%	4.67%	100.00%
3	6.86%	85.00%	2.39%	0.23%	1.42%	0.06%	0.42%	3.63%	100.00%
4	6.89%	83.16%	1.92%	0.12%	3.50%	0.06%	0.40%	3.95%	100.00%
5	7.85%	81.06%	4.82%	0.22%	1.75%	0.03%	0.45%	3.83%	100.00%

Plan D

	Hispanic	NH White	NH Black	NH AIAN	NH Asian	NH NHOPI	NH Other	NH - 2+ Race	Total
1	5,092	40,119	2,359	96	3,945	32	300	2,843	54,786
2	5,720	41,782	3,013	127	1,814	41	232	2,624	55,353
3	3,794	43,775	4,024	123	732	28	242	2,005	54,723
4	3,622	45,094	926	49	1,902	36	211	2,079	53,919
5	4,379	43,658	2,618	149	1,371	14	240	2,215	54,644
									273,425
Racial Ethnic Composition of Each District %									
	Hispanic %	NH White%	NH Black%	NH AIAN%	NH Asian%	NH NHOPI %	NH Other%	NH - 2+ Race%	Total%
1	9.29%	73.23%	4.31%	0.18%	7.20%	0.06%	0.55%	5.19%	100.00%
2	10.33%	75.48%	5.44%	0.23%	3.28%	0.07%	0.42%	4.74%	100.00%
3	6.93%	79.99%	7.35%	0.22%	1.34%	0.05%	0.44%	3.66%	100.00%
4	6.72%	83.63%	1.72%	0.09%	3.53%	0.07%	0.39%	3.86%	100.00%
5	8.01%	79.90%	4.79%	0.27%	2.51%	0.03%	0.44%	4.05%	100.00%



# Current Districts and Plan E

Current Districts with 2020 Population

	Hispanic	NH White	NH Black	NH AIAN	NH Asian	NH NHOPI	NH Other	NH - 2+ Race	Total
1	6378	48790	2935	132	4,574	44	339	3438	66,630
2	5,094	36,367	5,489	130	1,498	31	231	2,391	51,231
3	3,172	39,304	1,105	106	655	26	193	1,677	46,238
4	4,423	53,393	1,234	77	2,248	38	259	2,533	64,205
5	3,540	36,574	2,177	99	789	12	203	1,727	45,121
									273,425
Racial Ethnic Composition of Each District %									
	Hispanic %	NH White%	NH Black%	NH AIAN%	NH Asian%	NH NHOPI %	NH Other%	NH - 2+ Race%	Total%
1	9.57%	73.23%	4.40%	0.20%	6.86%	0.07%	0.51%	5.16%	100.00%
2	9.94%	70.99%	10.71%	0.25%	2.92%	0.06%	0.45%	4.67%	100.00%
3	6.86%	85.00%	2.39%	0.23%	1.42%	0.06%	0.42%	3.63%	100.00%
4	6.89%	83.16%	1.92%	0.12%	3.50%	0.06%	0.40%	3.95%	100.00%
5	7.85%	81.06%	4.82%	0.22%	1.75%	0.03%	0.45%	3.83%	100.00%

Plan E

	Hispanic	NH White	NH Black	NH AIAN	NH Asian	NH NHOPI	NH Other	NH - 2+ Race	Total
1	5,126	41,043	2,280	95	3,684	39	301	2,819	55,387
2	5,335	38,736	5,552	124	1,660	35	243	2,518	54,203
3	3,874	46,559	1,749	139	738	28	218	1,997	55,302
4	3,654	45,552	954	51	1,931	36	215	2,107	54,500
5	4,618	42,538	2,405	135	1,751	13	248	2,325	54,033
									273,425
Racial Ethnic Composition of Each District %									
	Hispanic %	NH White%	NH Black%	NH AIAN%	NH Asian%	NH NHOPI %	NH Other%	NH - 2+ Race%	Total%
1	9.25%	74.10%	4.12%	0.17%	6.65%	0.07%	0.54%	5.09%	100.00%
2	9.84%	71.46%	10.24%	0.23%	3.06%	0.06%	0.45%	4.65%	100.00%
3	7.01%	84.19%	3.16%	0.25%	1.33%	0.05%	0.39%	3.61%	100.00%
4	6.70%	83.58%	1.75%	0.09%	3.54%	0.07%	0.39%	3.87%	100.00%
5	8.55%	78.73%	4.45%	0.25%	3.24%	0.02%	0.46%	4.30%	100.00%

# District 1

## Current Districts

Race/Ethnicity	Count	Optimum	Deviation	Deviation. %
Total	66,630	54,685	11,945	21.84%
	Total	Total %	VAP Total	VAP% of Total
HISP:	6378	9.57%	3954	5.93%
NHWHT:	48790	73.23%	35569	53.38%
NHBLK:	2935	4.40%	2067	3.10%
NHAIAN:	132	0.20%	100	0.15%
NHASIAN:	4574	6.86%	3068	4.60%
NHNHOPI:	44	0.07%	28	0.04%
NHOTHER:	339	0.51%	204	0.31%
NHP2MRCE:	3438	5.16%	1827	2.74%

## Plan A

Race/Ethnicity	Count	Optimum	Dev	Dev. %
Total	54,786	54,685	101	0.18%
	Total	Total %	VAP Total	VAP% of Total
HISP:	5,092	9.29%	3,123	5.70%
NHWHT:	40,119	73.23%	29,265	53.42%
NHBLK:	2,359	4.31%	1,654	3.02%
NHAIAN:	96	0.18%	66	0.12%
NHASIAN:	3,945	7.20%	2,637	4.81%
NHNHOPI:	32	0.06%	24	0.04%
NHOTHER:	300	0.55%	180	0.33%
NHP2MRCE:	2,843	5.19%	1,476	2.69%

## Plan B

Race/Ethnicity	Count	Optimum	Dev	Dev. %
Total	54,698	54,685	13	0.02%
	Total	Total %	VAP Total	VAP% of Total
HISP:	5049	9.23%	3101	5.67%
NHWHT:	40494	74.03%	29588	54.09%
NHBLK:	2273	4.16%	1592	2.91%
NHAIAN:	94	0.17%	64	0.12%
NHASIAN:	3669	6.71%	2459	4.50%
NHNHOPI:	39	0.07%	24	0.04%
NHOTHER:	298	0.54%	181	0.33%
NHP2MRCE:	2782	5.09%	1459	2.67%

## Plan C

Race/Ethnicity	Count	Optimum	Dev	Dev. %
Total	54,786	54,685	101	0.18%
	Total	Total %	VAP Total	VAP% of Total
HISP:	5,092	9.29%	3,123	5.70%
NHWHT:	40,119	73.23%	29,265	53.42%
NHBLK:	2,359	4.31%	1,654	3.02%
NHAIAN:	96	0.18%	66	0.12%
NHASIAN:	3,945	7.20%	2,637	4.81%
NHNHOPI:	32	0.06%	24	0.04%
NHOTHER:	300	0.55%	180	0.33%
NHP2MRCE:	2,843	5.19%	1,476	2.69%

## Plan D

Race/Ethnicity	Count	Optimum	Dev	Dev. %
Total	54,786	54,685	101	0.18%
	Total	Total %	VAP Total	VAP% of Total
HISP:	5,092	9.29%	3,123	5.70%
NHWHT:	40,119	73.23%	29,265	53.42%
NHBLK:	2,359	4.31%	1,654	3.02%
NHAIAN:	96	0.18%	66	0.12%
NHASIAN:	3,945	7.20%	2,637	4.81%
NHNHOPI:	32	0.06%	24	0.04%
NHOTHER:	300	0.55%	180	0.33%
NHP2MRCE:	2,843	5.19%	1,476	2.69%

## Plan E

Race/Ethnicity	Count	Optimum	Dev	Dev. %
Total	55,387	54,685	702	1.28%
	Total	Total %	VAP Total	VAP% of Total
HISP:	5,126	9.25%	3,145	5.68%
NHWHT:	41,043	74.10%	29,950	54.07%
NHBLK:	2,280	4.12%	1,599	2.89%
NHAIAN:	95	0.17%	65	0.12%
NHASIAN:	3,684	6.65%	2,471	4.46%
NHNHOPI:	39	0.07%	24	0.04%
NHOTHER:	301	0.54%	184	0.33%
NHP2MRCE:	2,819	5.09%	1,481	2.67%

# District 2

## Current Districts

Race/Ethnicity	Count	Optimum	Deviation	Deviation. %
Total	51,231	54,685	-3,454	-6.32%
	Total	Total %	VAP Total	VAP% of Total
HISP:	5,094	9.94%	3,281	6.40%
NHWHT:	36,367	70.99%	27,101	52.90%
NHBLK:	5,489	10.71%	4,007	7.82%
NHAIAN:	130	0.25%	111	0.22%
NHASIAN:	1,498	2.92%	1,081	2.11%
NHNHOPI:	31	0.06%	24	0.05%
NHOTHER:	231	0.45%	145	0.28%
NHP2MRCE:	2,391	4.67%	1,321	2.58%

## Plan A

Race/Ethnicity	Count	Optimum	Dev	Dev. %
Total	54,997	54,685	312	0.57%
	Total	Total %	VAP Total	VAP% of Total
HISP:	5,680	10.33%	3,630	6.60%
NHWHT:	41,494	75.45%	30,913	56.21%
NHBLK:	3,007	5.47%	2,239	4.07%
NHAIAN:	122	0.22%	105	0.19%
NHASIAN:	1,813	3.30%	1,323	2.41%
NHNHOPI:	39	0.07%	23	0.04%
NHOTHER:	231	0.42%	153	0.28%
NHP2MRCE:	2,611	4.75%	1,436	2.61%

## Plan B

Race/Ethnicity	Count	Optimum	Dev	Dev. %
Total	54,264	54,685	-421	-0.77%
	Total	Total %	VAP Total	VAP% of Total
HISP:	5,533	10.20%	3,521	6.49%
NHWHT:	40,704	75.01%	30,568	56.33%
NHBLK:	3,322	6.12%	2,478	4.57%
NHAIAN:	124	0.23%	108	0.20%
NHASIAN:	1,734	3.20%	1,263	2.33%
NHNHOPI:	33	0.06%	24	0.04%
NHOTHER:	233	0.43%	154	0.28%
NHP2MRCE:	2,581	4.76%	1,421	2.62%

## Plan C

Race/Ethnicity	Count	Optimum	Dev	Dev. %
Total	55,299	54,685	614	1.12%
	Total	Total %	VAP Total	VAP% of Total
HISP:	5,713	10.33%	3,650	6.60%
NHWHT:	41,740	75.48%	31,102	56.24%
NHBLK:	3,013	5.45%	2,242	4.05%
NHAIAN:	123	0.22%	106	0.19%
NHASIAN:	1,814	3.28%	1,324	2.39%
NHNHOPI:	41	0.07%	25	0.05%
NHOTHER:	231	0.42%	153	0.28%
NHP2MRCE:	2,624	4.75%	1,442	2.61%

## Plan D

Race/Ethnicity	Count	Optimum	Dev	Dev. %
Total	55,353	54,685	668	1.22%
	Total	Total %	VAP Total	VAP% of Total
HISP:	5,720	10.33%	3,655	6.60%
NHWHT:	41,782	75.48%	31,129	56.24%
NHBLK:	3,013	5.44%	2,242	4.05%
NHAIAN:	127	0.23%	110	0.20%
NHASIAN:	1,814	3.28%	1,324	2.39%
NHNHOPI:	41	0.07%	25	0.05%
NHOTHER:	232	0.42%	154	0.28%
NHP2MRCE:	2,624	4.74%	1,442	2.61%

## Plan E

Race/Ethnicity	Count	Optimum	Dev	Dev. %
Total	54,203	54,685	-482	-0.88%
	Total	Total %	VAP Total	VAP% of Total
HISP:	5,335	9.84%	3,437	6.34%
NHWHT:	38,736	71.46%	29,251	53.97%
NHBLK:	5,552	10.24%	4,041	7.46%
NHAIAN:	124	0.23%	109	0.20%
NHASIAN:	1,660	3.06%	1,198	2.21%
NHNHOPI:	35	0.06%	27	0.05%
NHOTHER:	243	0.45%	153	0.28%
NHP2MRCE:	2,518	4.65%	1,378	2.54%

# District 3

## Current Districts

Race/Ethnicity	Count	Optimum	Deviation	Deviation. %
Total	46,238	54685	-8,447	-0.15%
	Total	Total %	VAP Total	VAP% of Total
HISP:	3,172	6.86%	2,279	4.93%
NHWHT:	39,304	85.00%	34,168	73.90%
NHBLK:	1,105	2.39%	839	1.81%
NHAIAN:	106	0.23%	92	0.20%
NHASIAN:	655	1.42%	555	1.20%
NHNHOPI:	26	0.06%	14	0.03%
NHOTHER:	193	0.42%	141	0.30%
NHP2MRCE:	1,677	3.63%	1,106	2.39%

## Plan A

Race/Ethnicity	Count	Optimum	Dev	Dev. %
Total	53,912	54685	-773	-1.41%
	Total	Total %	VAP Total	VAP% of Total
HISP:	3,711	6.88%	2,635	4.89%
NHWHT:	43,542	80.76%	37,542	69.64%
NHBLK:	3,559	6.60%	2,585	4.79%
NHAIAN:	129	0.24%	113	0.21%
NHASIAN:	728	1.35%	606	1.12%
NHNHOPI:	30	0.06%	20	0.04%
NHOTHER:	233	0.43%	165	0.31%
NHP2MRCE:	1,980	3.67%	1,306	2.42%

## Plan B

Race/Ethnicity	Count	Optimum	Dev	Dev. %
Total	54,324	54685	-361	-0.66%
	Total	Total %	VAP Total	VAP% of Total
HISP:	3,701	0.068128	2,671	4.92%
NHWHT:	44,390	81.71%	38,458	70.79%
NHBLK:	3,173	5.84%	2,310	4.25%
NHAIAN:	125	0.23%	110	0.20%
NHASIAN:	711	1.31%	596	1.10%
NHNHOPI:	31	0.06%	19	0.03%
NHOTHER:	227	0.42%	163	0.30%
NHP2MRCE:	1,966	3.62%	1,295	2.38%

## Plan C

Race/Ethnicity	Count	Optimum	Dev	Dev. %
Total	54,965	54685	280	0.51%
	Total	Total %	VAP Total	VAP% of Total
HISP:	3,839	6.98%	2,725	4.96%
NHWHT:	43,975	80.01%	37,944	69.03%
NHBLK:	4,041	7.35%	2,937	5.34%
NHAIAN:	123	0.22%	105	0.19%
NHASIAN:	721	1.31%	606	1.10%
NHNHOPI:	29	0.05%	17	0.03%
NHOTHER:	238	0.43%	162	0.29%
NHP2MRCE:	1,999	3.64%	1,306	2.38%

## Plan D

Race/Ethnicity	Count	Optimum	Dev	Dev. %
Total	54,723	54685	38	0.07%
	Total	Total %	VAP Total	VAP% of Total
HISP:	3,794	6.93%	2,704	4.94%
NHWHT:	43,775	79.99%	37,859	69.18%
NHBLK:	4,024	7.35%	2,920	5.34%
NHAIAN:	123	0.22%	106	0.19%
NHASIAN:	732	1.34%	611	1.12%
NHNHOPI:	28	0.05%	16	0.03%
NHOTHER:	242	0.44%	166	0.30%
NHP2MRCE:	2,005	3.66%	1,311	2.40%

## Plan E

Race/Ethnicity	Count	Optimum	Dev	Dev. %
Total	55,302	54,685	617	1.13%
	Total	Total %	VAP Total	VAP% of Total
HISP:	3,874	7.01%	2,820	5.10%
NHWHT:	46,559	84.19%	40,420	73.09%
NHBLK:	1,749	3.16%	1,387	2.51%
NHAIAN:	139	0.25%	120	0.22%
NHASIAN:	738	1.33%	620	1.12%
NHNHOPI:	28	0.05%	16	0.03%
NHOTHER:	218	0.39%	159	0.29%
NHP2MRCE:	1,997	3.61%	1,347	2.44%

# District 4

## Current Districts

Race/Ethnicity	Count	Optimum	Deviation	Deviation. %
Total	64,205	54685	9,520	17.41%
	Total	Total %	VAP Total	VAP% of Total
HISP:	4,423	6.89%	2,853	4.44%
NHWHT:	53,393	83.16%	42,090	65.56%
NHBLK:	1,234	1.92%	903	1.41%
NHAIAN:	77	0.12%	65	0.10%
NHASIAN:	2,248	3.50%	1,619	2.52%
NHNHOPI:	38	0.06%	27	0.04%
NHOTHER:	259	0.40%	166	0.26%
NHP2MRCE:	2,533	3.95%	1,441	2.24%

## Plan A

Race/Ethnicity	Count	Optimum	Dev	Dev. %
Total	55,388	54685	703	1.29%
	Total	Total %	VAP Total	VAP% of Total
HISP:	3,877	7.00%	2,514	4.54%
NHWHT:	45,615	82.36%	35,927	64.86%
NHBLK:	1,164	2.10%	854	1.54%
NHAIAN:	73	0.13%	61	0.11%
NHASIAN:	2,199	3.97%	1,549	2.80%
NHNHOPI:	36	0.06%	25	0.05%
NHOTHER:	205	0.37%	131	0.24%
NHP2MRCE:	2,219	4.01%	1,259	2.27%

## Plan B

Race/Ethnicity	Count	Optimum	Dev	Dev. %
Total	54,990	54685	305	0.56%
	Total	Total %	VAP Total	VAP% of Total
HISP:	3,715	6.76%	2,424	4.41%
NHWHT:	46,061	83.76%	36,606	66.57%
NHBLK:	1,040	1.89%	783	1.42%
NHAIAN:	54	0.10%	43	0.08%
NHASIAN:	1,803	3.28%	1,336	2.43%
NHNHOPI:	29	0.05%	23	0.04%
NHOTHER:	207	0.38%	128	0.23%
NHP2MRCE:	2,081	3.78%	1,185	2.15%

## Plan C

Race/Ethnicity	Count	Optimum	Dev	Dev. %
Total	54,551	54,685	-134	-0.25%
	Total	Total %	VAP Total	VAP% of Total
HISP:	3,691	6.77%	2,369	4.34%
NHWHT:	45,392	83.21%	35,827	65.68%
NHBLK:	1,003	1.84%	727	1.33%
NHAIAN:	54	0.10%	42	0.08%
NHASIAN:	2,004	3.67%	1,423	2.61%
NHNHOPI:	39	0.07%	28	0.05%
NHOTHER:	211	0.39%	135	0.25%
NHP2MRCE:	2,157	3.95%	1,208	2.21%

## Plan D

Race/Ethnicity	Count	Optimum	Dev	Dev. %
Total	53,919	54,685	-766	-1.40%
	Total	Total %	VAP Total	VAP% of Total
HISP:	3,622	6.72%	2,322	4.31%
NHWHT:	45,094	83.63%	35,525	65.89%
NHBLK:	926	1.72%	680	1.26%
NHAIAN:	49	0.09%	37	0.07%
NHASIAN:	1,902	3.53%	1,361	2.52%
NHNHOPI:	36	0.07%	25	0.05%
NHOTHER:	211	0.39%	136	0.25%
NHP2MRCE:	2,079	3.86%	1,151	2.13%

## Plan E

Race/Ethnicity	Count	Optimum	Dev	Dev. %
Total	54,500	54,685	-185	-0.34%
	Total	Total %	VAP Total	VAP% of Total
HISP:	3,654	6.70%	2,342	4.30%
NHWHT:	45,552	83.58%	35,870	65.82%
NHBLK:	954	1.75%	699	1.28%
NHAIAN:	51	0.09%	39	0.07%
NHASIAN:	1,931	3.54%	1,380	2.53%
NHNHOPI:	36	0.07%	25	0.05%
NHOTHER:	215	0.39%	138	0.25%
NHP2MRCE:	2,107	3.87%	1,172	2.15%

# District 5

## Current Districts

Race/Ethnicity	Count	Optimum	Deviation	Deviation. %
Total	45,121	54685	-9,564	-17.49%
	Total	Total %	VAP Total	VAP% of Total
HISP:	3,540	7.85%	2,612	5.79%
NHWHT:	36,574	81.06%	31,953	70.82%
NHBLK:	2,177	4.82%	1,725	3.82%
NHAIAN:	99	0.22%	88	0.20%
NHASIAN:	789	1.75%	645	1.43%
NHNHOPI:	12	0.03%	7	0.02%
NHOTHER:	203	0.45%	157	0.35%
NHP2MRCE:	1,727	3.83%	1,168	2.59%

## Plan A

Race/Ethnicity	Count	Optimum	Dev	Dev. %
Total	54,342	54685	-343	-0.63%
	Total	Total %	VAP Total	VAP% of Total
HISP:	4,247	7.82%	3,077	5.66%
NHWHT:	43,658	80.34%	37,234	68.52%
NHBLK:	2,851	5.25%	2,209	4.06%
NHAIAN:	124	0.23%	111	0.20%
NHASIAN:	1,079	1.99%	853	1.57%
NHNHOPI:	14	0.03%	8	0.01%
NHOTHER:	256	0.47%	184	0.34%
NHP2MRCE:	2,113	3.89%	1,386	2.55%

## Plan B

Race/Ethnicity	Count	Optimum	Dev	Dev. %
Total	55,149	54685	464	0.85%
	Total	Total %	VAP Total	VAP% of Total
HISP:	4,609	8.36%	3,262	5.91%
NHWHT:	42,779	77.57%	35,661	64.66%
NHBLK:	3,132	5.68%	2,378	4.31%
NHAIAN:	147	0.27%	131	0.24%
NHASIAN:	1,847	3.35%	1,314	2.38%
NHNHOPI:	19	0.03%	10	0.02%
NHOTHER:	260	0.47%	187	0.34%
NHP2MRCE:	2,356	4.27%	1,503	2.73%

## Plan C

Race/Ethnicity	Count	Optimum	Dev	Dev. %
Total	53,824	54685	-861	-1.57%
	Total	Total %	VAP Total	VAP% of Total
HISP:	4,272	7.94%	3,112	5.78%
NHWHT:	43,202	80.27%	36,743	68.27%
NHBLK:	2,524	4.69%	1,981	3.68%
NHAIAN:	148	0.27%	137	0.25%
NHASIAN:	1,280	2.38%	978	1.82%
NHNHOPI:	10	0.02%	6	0.01%
NHOTHER:	245	0.46%	183	0.34%
NHP2MRCE:	2,143	3.98%	1,431	2.66%

## Plan D

Race/Ethnicity	Count	Optimum	Dev	Dev. %
Total	54,644	54685	-41	-0.07%
	Total	Total %	VAP Total	VAP% of Total
HISP:	4,379	8.01%	3,175	5.81%
NHWHT:	43,658	79.90%	37,103	67.90%
NHBLK:	2,618	4.79%	2,045	3.74%
NHAIAN:	149	0.27%	137	0.25%
NHASIAN:	1,371	2.51%	1,035	1.89%
NHNHOPI:	14	0.03%	10	0.02%
NHOTHER:	240	0.44%	177	0.32%
NHP2MRCE:	2,215	4.05%	1,483	2.71%

## Plan E

Race/Ethnicity	Count	Optimum	Dev	Dev. %
Total	54,033	54,685	-652	-1.19%
	Total	Total %	VAP Total	VAP% of Total
HISP:	4,618	8.55%	3,235	5.99%
NHWHT:	42,538	78.73%	35,390	65.50%
NHBLK:	2,405	4.45%	1,815	3.36%
NHAIAN:	135	0.25%	123	0.23%
NHASIAN:	1,751	3.24%	1,299	2.40%
NHNHOPI:	13	0.02%	8	0.01%
NHOTHER:	248	0.46%	179	0.33%
NHP2MRCE:	2,325	4.30%	1,485	2.75%