

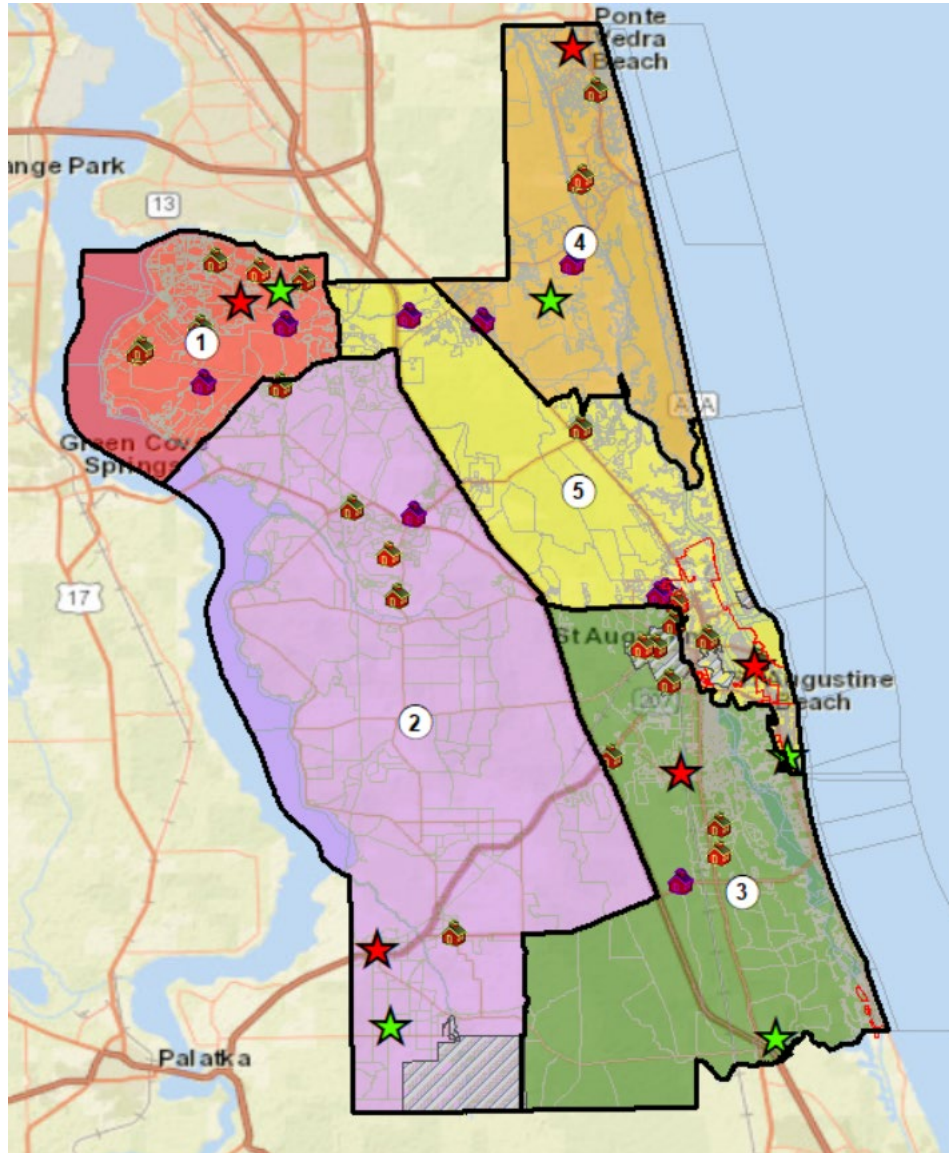


St. Johns County Florida District Redistricting 2021 11-22-21 – E-2

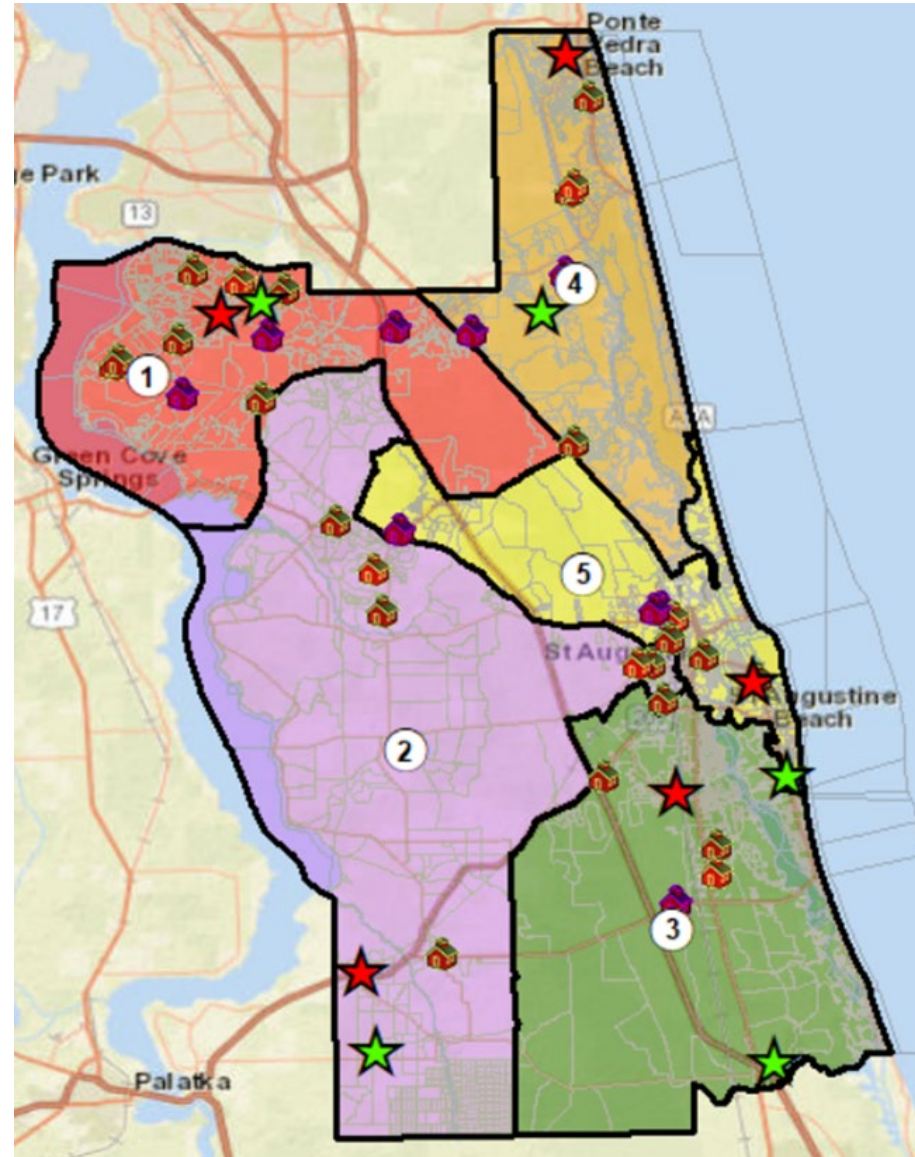


ARC Bridge Consulting & Training Inc.
www.arcbridge.com

Plan E-2 - Max Dev – 3.66%



Current - Max Dev – 39.33%



District Summary

1 of 1 100% Find | Next

District Summary

SJFL-Plan-E-2

District Count:	5
Total Population:	273,425
Maximum Deviation:	2,002
	3.66%
Average Deviation:	806
	1.47%
Minimum Count:	53,893
Maximum Count:	55,895

Name	Count	Optimum	Deviation	Deviation %
1	55,895	54,685	1,210	2.21%
2	53,893	54,685	-792	-1.45%
3	54,223	54,685	-462	-0.84%
4	55,491	54,685	806	1.47%
5	53,923	54,685	-762	-1.39%

Comparative Analysis of Current Districts and Plans E, E-1, E-2, F

Plan E - Max Dev – 2.48%

Plan E-1 - Max Dev – 4.10%

Plan E-2 - Max Dev – 3.66%

Plan F - Max Dev – 3.35%

