



Are you in need of your Reading Endorsement? Do you prefer **face-to-face** and **interactive conversations** when learning?

Then join us for the

## **Reading Competency 1 & 2 PLC Cohort**

**Who:** Teachers K-3 who need to satisfy Reading Competency 1 and 2 for Reading Endorsement

**Why:** To provide teachers with a safe space and ample time for understanding and applying reading foundations strategies before implementing in the classroom.

**What:** PLC-like course that will take you through interactive conversations and activities that will be used in your classroom with students who are building the foundations for reading.

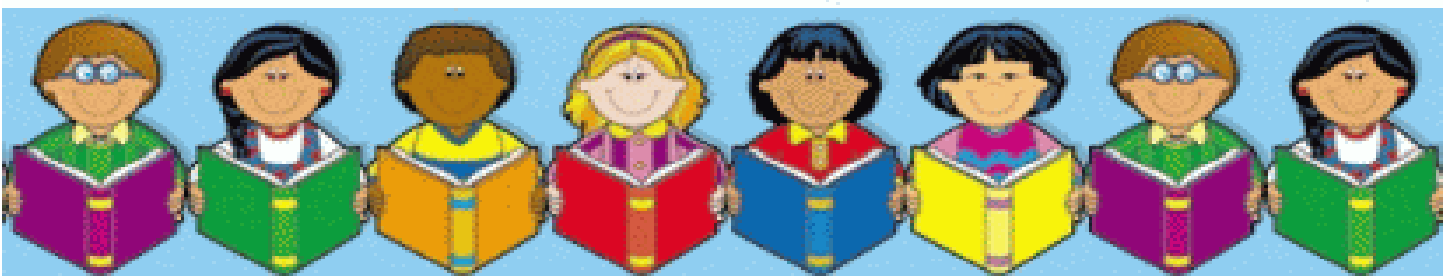
**Where:** Online through Microsoft TEAMS

**When:** Every other Saturday morning from 9:00-11:30am  
(\*See schedule on next page)



**By whom:** Christi Pfaff (1<sup>st</sup> Grade Teacher at Liberty Pines Academy, Masters in Reading Education (K-12), and State of Florida Early Literacy Cadre Member)

## **We look forward to seeing you in the cohort!**



\*Course completion and points towards Reading Endorsement are earned if ALL coursework is complete and turned in on time.



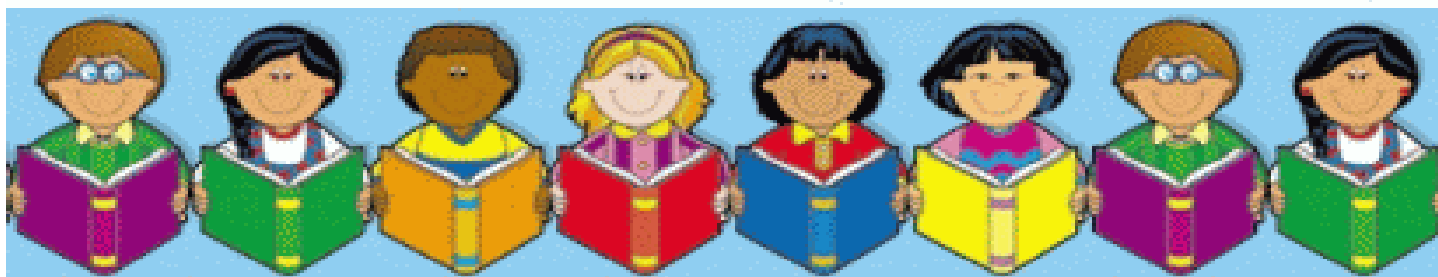
# Reading Competency 1 & 2

## PLC Cohort Schedule



<b>Introduction</b>	Introduction	Saturday, March 27 @ 9-11:30am
<b>Module 1: Foundations of Reading</b>	Sessions 1 & 2	Saturday, April 3 @ 9-11:30am
	Sessions 3 & 4	Saturday, April 17 @ 9-11:30am
	Sessions 5 & 6	Saturday, May 1 @ 9-11:30am
	Sessions 7 & 8	Saturday, May 15 @ 9-11:30am
	Sessions 9 & 10	Saturday, May 29 @ 9-11:30am
<b>Break for the Summer</b>		
<b>Module 2: Comprehension</b>	Sessions 1 & 2	Saturday, August 28 @ 9-11:30am
	Sessions 3 & 4	Saturday, September 11 @ 9-11:30am
	Sessions 5 & 6	Saturday, September 25 @ 9-11:30am
	Session 7	Saturday, October 9 @ 9-11:30am
<b>Presentations</b>		Saturday, October 16 @ 9am-12pm

Please email Christi Pfaff ([Christine.pfaff@stjohns.k12.fl.us](mailto:Christine.pfaff@stjohns.k12.fl.us)) or Melinda Bogart ([Melinda.Bogart@stjohns.k12.fl.us](mailto:Melinda.Bogart@stjohns.k12.fl.us)) if you have any questions.



\*Course completion and points towards Reading Endorsement are earned if ALL coursework is complete and turned in on time.