



JOINT MEETING OF THE ST JOHNS COUNTY BOARD OF COUNTY COMMISSIONERS & SCHOOL BOARD:

FUTURE SCHOOL CONSTRUCTION PROJECTS

ST. JOHNS COUNTY SCHOOL DISTRICT

October 26, 2023



K-8 SCHOOL NN

Located in Shearwater development on a mitigation school site

Funded by COPs, Proportionate Share Mitigation funds, School Impact Fees, 1.5 Mills, CO & DS

Prototype with approx. 1500 Student Capacity

Projected Completion for 2024-2025 SY

SHEARWATER

Access from CR 16A
and Shearwater
Parkway

Adjacent to St. Johns
County Park







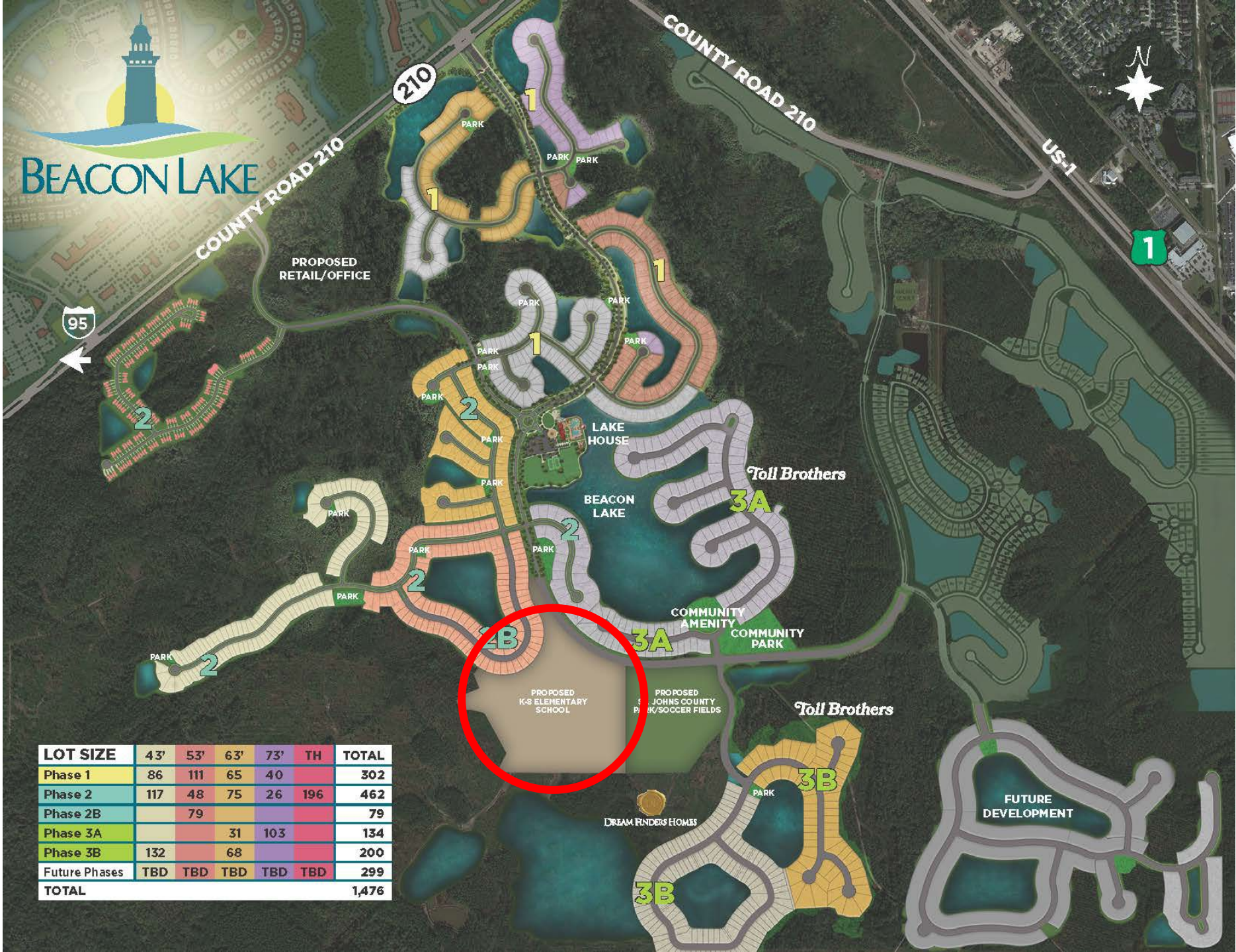
K-8 SCHOOL 00

Located in Twin Creeks DRI (Beacon Lakes) on a mitigation school site

Prototype with approx. 1500 Student Capacity

Funded by COPs, Proportionate Share Mitigation funds, and School Impact Fees

Projected Completion for 2024-2025 SY



TWIN
CREEKS
DRI –

BEACON
LAKE

| LOT SIZE | 43' | 53' | 63' | 73' | TH | TOTAL |
|---------------|-----|-----|-----|-----|-----|--------------|
| Phase 1 | 86 | 111 | 65 | 40 | | 302 |
| Phase 2 | 117 | 48 | 75 | 26 | 196 | 462 |
| Phase 2B | | 79 | | | | 79 |
| Phase 3A | | | 31 | 103 | | 134 |
| Phase 3B | 132 | | 68 | | | 200 |
| Future Phases | TBD | TBD | TBD | TBD | TBD | 299 |
| TOTAL | | | | | | 1,476 |





K-8 SCHOOL PP

Located in RiverTown DRI on mitigation school site

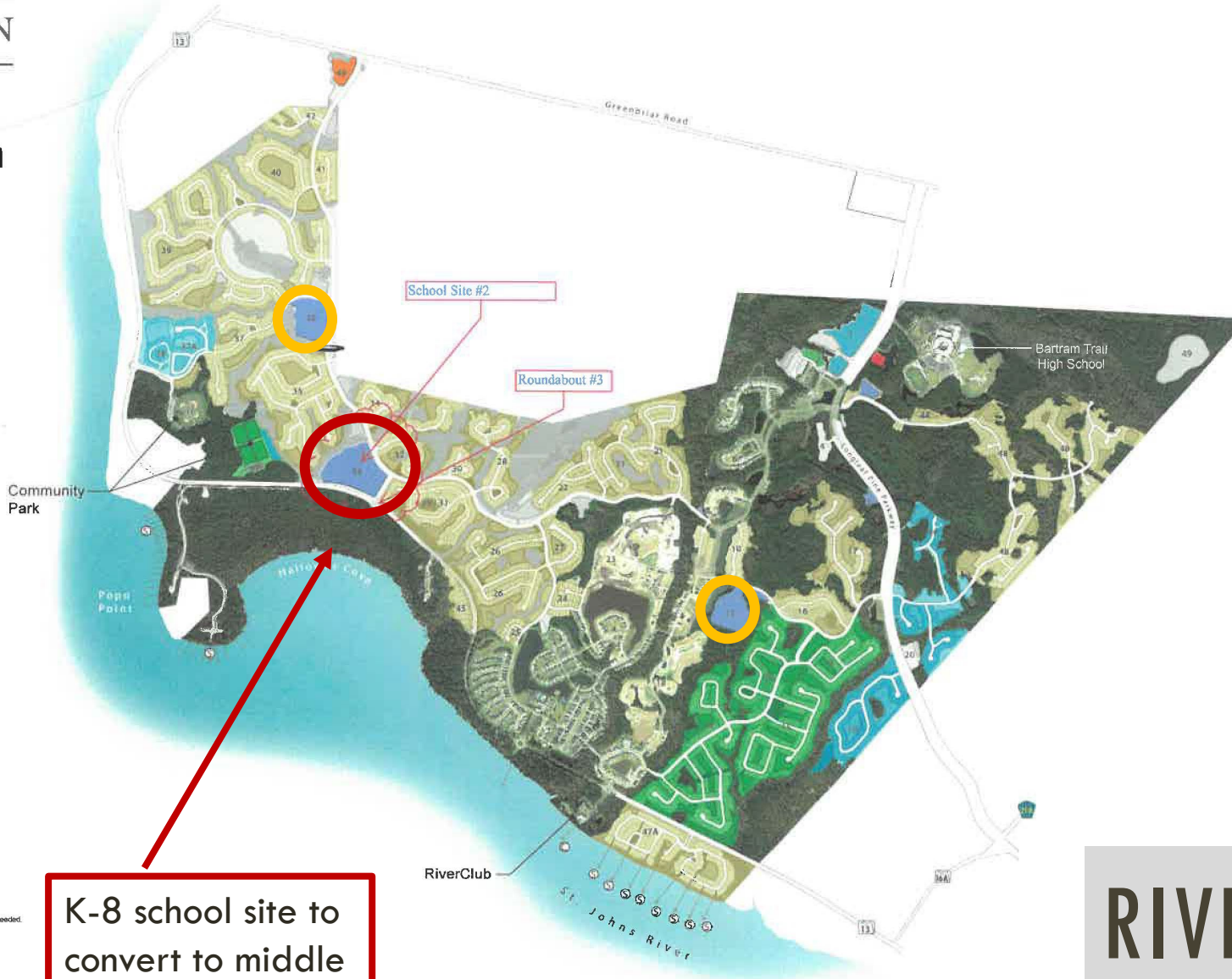
K-8 Prototype with approx. 1100 Student Capacity to transition to a MS in the future

Funded by COPs, Proportionate Share Mitigation funds, School Impact Fees and High Growth Legislative Allocation

Projected Completion for 2025-2026 SY

Master Plan

- SINGLE FAMILY
- TOWNHOMES/MULTIFAMILY
- ACTIVE ADULT
- SCHOOL SITE
- SITE COMMERCIAL



K-8 school site to convert to middle school

RIVERTOWN DRI

June 28, 2019 113004.09
0 500' 1000' 2000'

PROSSER

This map is a general concept of the proposed Rivertown plan. Mattamy RiverTown, LLC reserves the right to make changes as needed.





K-8 SCHOOL QQ

Located in SilverLeaf DRI
(Parcel 29C) on a mitigation
school site

Prototype with approx. 1500
Student Capacity

Projected Funding by
Certificates of Participation
(COPs) and School Impact Fees

Projected Completion for
2026-2027 SY

SILVERLEAF

Access from Courtney
Vista Drive and
SilverLeaf Parkway

Adjacent to Silver
Landing

SILVERLEAF 
Parcel 3B Access
February 21, 2019







K-8 SCHOOL RR

Located in Nocatee DRI in Seabrook (formerly Snowden Village) on a mitigation school site

Prototype with approx. 1500 Student Capacity

Projected Funding by Certificates of Participation (COPs) and School Impact Fees

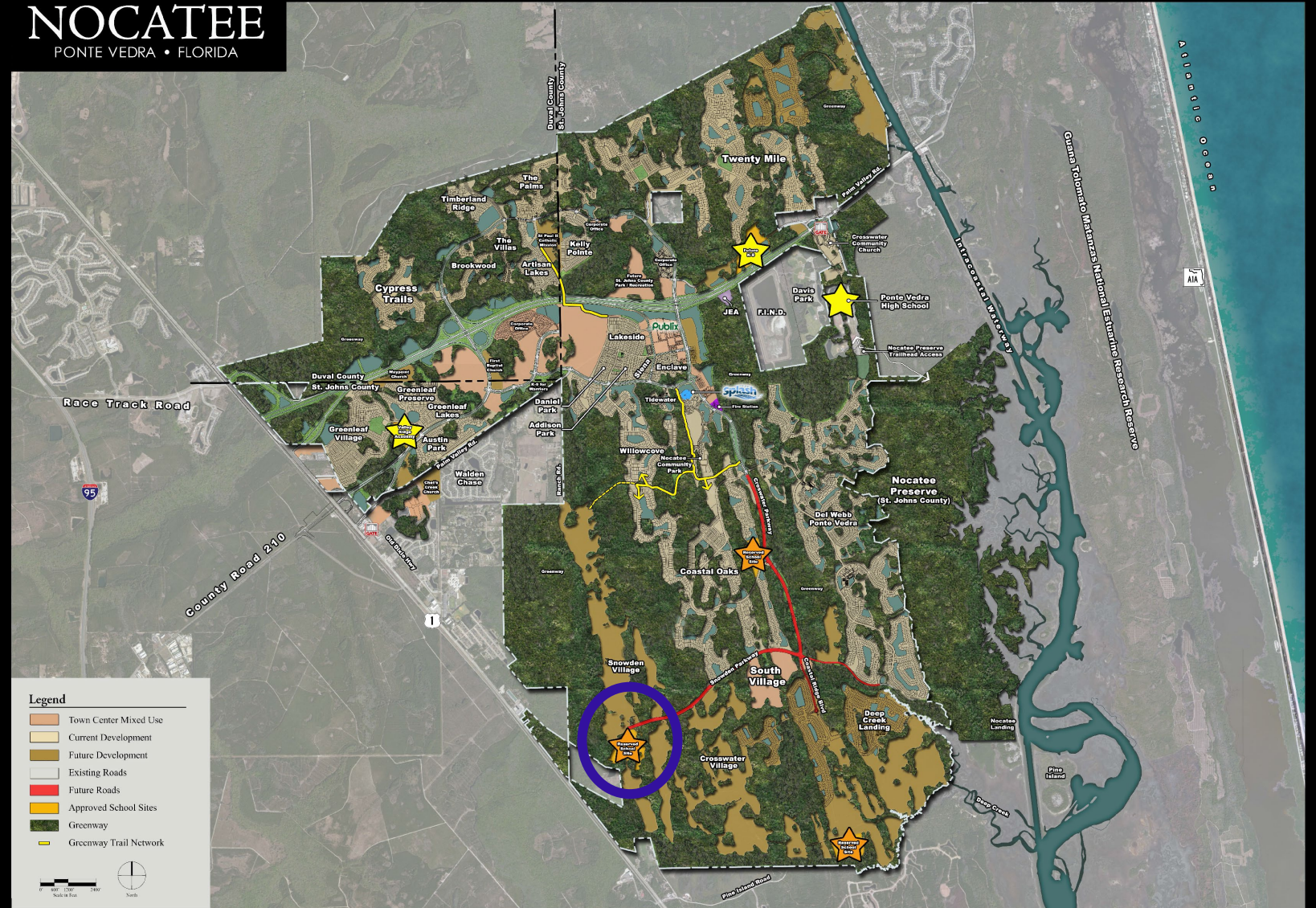
Projected Completion for 2026-2027 SY

NOCATEE

PONTE VEDRA • FLORIDA

NOCATEE

PONTE VEDRA • FLORIDA



Note: This land plan and/or rendering is conceptual and is subject to review, change and approval by local governmental agencies for final environmental, land use and other approvals. This plan does not represent an intended representation, therefore all acreage figures are approximate and subject to change.
Revised 04/16



NOCATEE

PONTE VEDRA • FLORIDA



FIRST COAST
TECHNICAL
COLLEGE
(FCTC)

Collaboration between County & School District

Expansion of FCTC workforce development and early childhood education programs into Hastings

Renovation & Reuse of Hastings High School

Funded through American Rescue Plan Act (ARPA)

Projected completion 2026-2027





JOINT MEETING: BCC & SJCSD

October 26, 2023