



Agenda Item Details

Meeting	May 02, 2017 - REGULAR SCHOOL BOARD MEETING
Category	S. Operational Services - Consent
Subject	1. Request for Acceptance of the Capital Projects Status Report May 2017
Access	Public
Type	Action (Consent)
Recommended Action	Acceptance of the Capital Projects Status Report May 2017
Goals	GM-1 Mission Statement

Public Content

Background Information:

The Facilities Department prepares the Capital Projects Status Report to provide summary information and updates to the Board on the status of capital projects. The report is divided into six sections: 1) Executive Summary; 2) Projects in the Planning Stage; 3) Major Projects Under Construction; 4) Minor Capital Improvements Projects; 5) Projects in Close-out/Final Stage; and 6) Financial Information.

Educational Impact:

Monthly Report.

Strategic Plan Impact:

Monthly Report.

Fiscal Impact:

Projects as identified in the District's Five-Year Building, Existing Conditions Report and the District's Capital Outlay Budget.

Recommendation:

Acceptance of the Capital Projects Status Report May 2017.

Action Required:

Approval of Superintendent's recommendation.

Drafted, reviewed and submitted by:

Paul Rose, Executive Director for Facilities & Operations
Cathy Mittelstadt, Deputy Superintendent for Operations

Sincerely,

Tim Forson

Superintendent of Schools

ST. JOHNS COUNTY SCHOOL
DISTRICT

CAPITAL PROJECTS
STATUS REPORT

APRIL 2017

Section 1.

CAPITAL PROJECTS STATUS REPORT – APRIL 2017

Executive Summary

The Facilities Department staff is implementing the current capital projects identified in the Educational Plant Survey and the Five-Year Facilities Work Plan. Significant projects include:

- **Nease HS Expansion, Renovations & Site Improvements:** Through the joint coordination of the design team (Pond and Company) and the CM firm (the Barton Malow Company) the comprehensive design work for this multi-phase project is nearing completion. The kitchen/dining expansion phase has been completed/constructed and the 600-student station classroom expansion/addition facility is currently underway, along with related site work items. Project is scheduled for a summer 2017 completion. Renovation of existing campus facilities and additional site work to follow.
- **Elementary School “M”:** Following the award of a contract to STG Contracting Group, Inc. at the June 15th School Board meeting, construction of Elementary School “M” began immediately. Site work, including parking lot and drives, is ongoing. Tilt wall is complete with the building being erected. Roofing installation is complete. Interior finishes are ongoing. Interior and exterior painting is nearing completion. The project is on schedule for a 2017 – 2018 school year opening.
- **K-8 School “KK”:** After awarding a contract to Charles Perry Partners, Inc. at the August 9th School Board meeting, work to clear the site began immediately for K-8 School “KK” located in the Nocatee community. Tilt-wall panel erection began in April. This project is scheduled for a 2018 – 2019 school year opening.
- **K-8 School “LL”:** Work at the K-8 School “LL” site in the Aberdeen community is progressing after a contract was awarded to AFL Construction, Inc. at the September 13th School Board meeting. Electrical and mechanical rough-ins are progressing and the floor slab has been poured. Formwork and pouring for the tilt-wall panels is progressing. This project is scheduled for a 2018 – 2019 school year opening.
- **Pacetti Bay MS Dining Expansion:** The facilities staff selected Bhide & Hall Architects from the District’s Professional Architectural Continuing Contract Services list to provide architectural services for the design and construction of a dining expansion at Pacetti Bay Middle School. The bid opening for Pacetti Bay Middle School was held on October 20, 2016 resulting in the award of a contract to RB Marks Construction, Inc at the November 8th School Board meeting. Construction began immediately and the project is substantially complete.
- **Valley Ridge Academy Dining Expansion:** Bhide & Hall Architects also provided architectural services for the design and construction of a dining expansion at Valley Ridge Academy. The bid opening for Valley Ridge Academy was held on October 27, 2016 resulting in the award of a contract to DiMare Construction Company. This contract was awarded at the November 8th School Board meeting. Construction has commenced and is projected to be complete in March 2017. The project is substantially complete.

Additional information for the above projects can be found in Sections 2 and 3.

Other projects identified in the Capital Outlay Budget are being implemented, executed and completed including: roof repairs and replacements; elementary and middle school security improvements; media center renovations; science classroom upgrades; miscellaneous school site

improvements; security camera system upgrades; building/energy management system upgrades; and, various other ongoing maintenance projects.

The Capital Projects Status report is divided into six sections:

1. Executive Summary
2. Projects in the Planning Stage
3. Major Projects Under Construction
4. Minor Capital Improvement Projects
5. Projects in Close-out/Final Stage
6. Financial Information

The District is in various stages of planning, designing and construction of several major construction projects as identified in the Educational Plant Survey and the Five-Year Facilities Work Plan as approved by the School Board.

The Capital Projects Status Report also includes Section 4 referred to as “Minor Capital Improvement Projects” and identifies projects at individual schools that were approved in the Capital Outlay Budget.

Section 6 is “Financial Information” and includes the 2016 – 2017 Capital Outlay Budget as approved in September 2016 (page 8 of the Capital Outlay Summary Budget) and the current financial report.

Section 2.

CAPITAL PROJECTS STATUS REPORT – APRIL 2017

Projects in the Planning Stage

- ◆ **Nease High School Expansion, Renovations and Site Improvements** – An RFQ (Request for Qualifications) was advertised in November 2014 for Professional Architect Consultant Services for the design and future construction of the NHS Expansion, Renovations and Site Improvements Project. Pond & Company was identified as the most qualified firm and a contract for development of a master plan for Nease High School was negotiated and subsequently approved at a Special School Board meeting on January 27, 2015. The master plan was completed and then presented and approved at the April 14th School Board meeting. Subsequently, a Comprehensive Project Design Development contract for the design and execution of the approved master plan for the Nease High School expansion project was negotiated with Pond & Company, and approved at the June 9th School Board meeting. Design work for this comprehensive multi-phase construction project is nearing completion. This project is a multi-phase construction effort which will be administered over an approximate two-year period. The kitchen and dining expansion phase is complete. The 2-Story classroom expansion is under construction and scheduled for a summer 2017 completion. Additional phases will follow to complete the Master Plan as funds become available. Budget amendment for the Construction Management effort for execution of additional phases of work is being presented for approval at the May School Board Meeting. For more detailed updates on the construction phases please refer to Section 3.

Section 3.

CAPITAL PROJECTS STATUS REPORT – APRIL 2017

Major Projects Under Construction

- ◆ Nease High School Expansion, Renovations and Site Improvements
- ◆ New Elementary School “M”
- ◆ New K-8 School “KK”
- ◆ New K-8 School “LL”



**St. Johns County School District
Capital Projects Program
April 2017 Report**

Project: Nease HS Expansion, Renovations, & Site Improvements

Background/Scope: The St. Johns County School District's current Five-Year Work Plan and Educational Plant Survey includes a multi-year, multi-phase project at Nease HS to include an expansion, various renovations and site improvements. This project will include: an approximately 60,000 s.f., 510 student station, 20 classroom addition; kitchen renovation and dining room expansion; new bus canopies; and new student/visitor and entry canopy. Renovations shall include improvements to: Pod C - Admin.; Pod D – Media Center; Pod F – ESE; Pod G - Locker Room expansion and renovation; Pod J - first floor Gymnasium; Pod L – Dining/Kitchen and Pods M & O (classrooms). The project also includes demolition, site preparation, site drainage, site utilities, Ray Road Right-of-Way improvements, new internal roadways, parking expansion, and relocated bus loop as delineated on the approved Master Plan. Budget amendment for the Construction Management effort for execution of additional phases of work is being presented for approval at the May School Board Meeting.

Architect: Pond & Company

Contractor: Barton Malow Company

Project Manager: Stan Reddish

Contract Amounts:

GMP Contract Amount:	\$12,109,311.00
Change Order #1	<\$1,713,391.46>
Current Contract Amount	\$10,395,919.54

Direct Purchases:

Total Owner Direct Purchases	\$1,173,280.15
Total Tax Savings	\$70,821.81

Critical Dates:

	<u>Kitchen/Cafeteria Phase</u>	<u>Classroom Expansion</u>	<u>Pod Renovation</u>
Contract Award	02/09/16	02/09/16	TBD
Notice to Proceed	04/14/16	06/23/16	
Substantial Completion	08/17/16	07/21/17	
Final Completion	09/15/16	08/07/17	

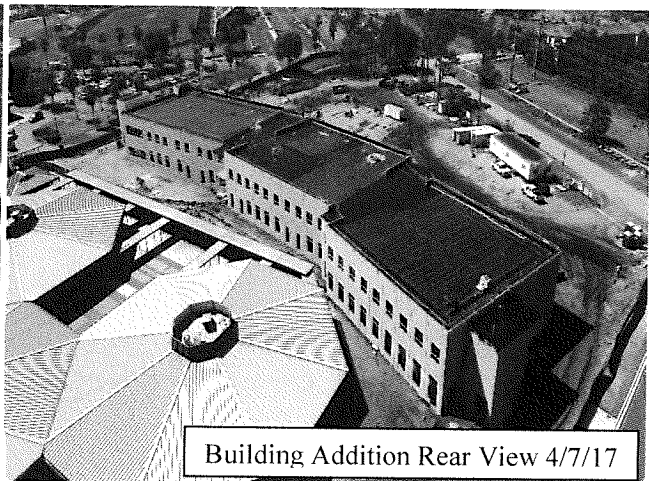
Schedule:

	100%	56%	In Design
--	------	-----	-----------

Status/Comments: Roofing system is complete. Metal wall stud installation is about 80% complete. Air Handler units are in place. Mechanical, Electrical and Plumbing work continues.



Admin. Area 4/7/17



Building Addition Rear View 4/7/17

April 7, 2017

Paul Rose, Executive Director for Facilities & New Construction
St. Johns County School District
3740 International Golf Parkway, Suite 200
St. Augustine, FL 32092

**Re: Nease High School Expansion, Renovations & Site Improvements
St. Johns County School District, Project No. 2015-30
Monthly Status Report--No. 18, April 2017**

Current Status:

Site Development (Phase 2) Design:

1. Phase 2 Site Civil Design included FDOT design and permitting, construction bid evaluation, Phase 1 and Phase 2 plan updates (including additional Parent Loop Parking) per Client Requests, and Ray Road County and Utility coordination.
2. Red light and right turn lane at US1 & Ray Road intersection accelerated to a construction period of summer 2017. Utility relocates alongside US 1 at Ray Road intersection has begun already.
3. Civil engineering drawings to extend a third lane all the way down Ray Road were developed and submitted on February 23, 2017 to CMAr for pricing.

Sitework and Building Construction:

1. Tilt-wall panels are being rubbed and corrected for final finishing. Inner sealant joint completed.
2. Aluminum storefront framing of punched openings and entrances have been installed. Most of the openings have been glazed. Aluminum curtainwall framing installed.
3. Hollow metal frames are installed.
4. Roofing first ply is complete. Roof cap sheet work ongoing.
5. Stair B steel erected. Stair handrails are on-site. Interior non-load-bearing metal studs are complete both floors. Ductwork, electrical power and telecom rough-in are in. Plumbing, sprinkler piping are in process both floors.
6. Fire and Sewer line across the visitor loop completed during Spring Break. Culvert replacement adjacent to Bus Depot completed during Spring Break.

Building Design-New Classroom Addition:

1. Flooring submittals have been received and returned. Resilient flooring revised to LVT products in order to avoid moisture mitigation cost and time delays. Floor Finish Revisions were issued as ASI-13.

Building Design-Existing Buildings Renovations (Pods C, D, G, J, M & O):

1. 100% GMP-Permit Submittal for Pod Renovations, including Hardscape and Landscaping, were submitted to CMAr on March 31, 2017 for GMP pricing.

Sincerely,



Michael Dennison, AIA
Senior Architect

Cc: Stan Reddish, St Johns County School District
Jim Stege, Pond & Co.
Mark Levine, Pond & Co.
Matt Treadwell, Barton-Malow



Nease High School Expansion, Renovations and Site Improvements

New Classroom Addition

04.08.2017



**St. Johns County School District
Capital Projects Program
April 2017 Report**

Project: New Elementary School "M"

Background/Scope: The St. Johns County School District's current Five-Year Work Plan and Educational Plant Survey include a New Elementary school in central St. Johns County. The construction contract award was approved at the June 2016 School Board Meeting. New Elementary School "M" is an approximately 110,000 s.f., 871 student station, 43-classroom two-story building. It is to be constructed to Green Building Standards and is located on an 18.5-acre site. Project completion is scheduled for a 2017-2018 school year opening.

Architect: SchenkelShultz Architecture

Contractor: STG Contracting Group, Inc.

Project Manager: Stan Reddish

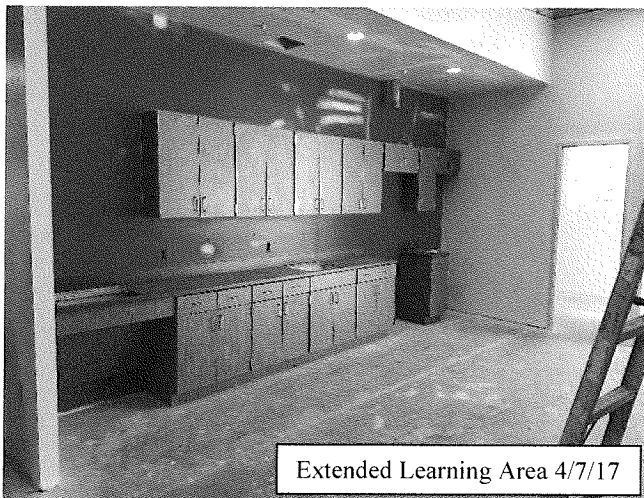
Contract Amounts:	Award Amount:	\$19,599,000.00
	Change Order #1	\$142,462.99
	Change Order #2	<\$4,796,737.73>
	Change Order #3	<\$1,122,510.73>
	Change Order #4	<\$186,048.66>
	Current Contract Amount	\$13,636,165.87

Direct Purchases:	Total Owner Direct Purchases	\$5,974,164.39
	Total Tax Savings	\$359,616.18

Critical Dates:	Contract Award	06/15/16
	Notice to Proceed	06/27/16
	Substantial Completion	05/10/17
	Final Completion	06/10/17

Schedule: 80%

Status/Comments: Site work, including parking lot and drives, is ongoing. Interior painting is nearing completion and exterior painting is complete. Millwork is being installed. Flat roof is nearly complete and metal roofing is underway. On schedule for June opening.



Extended Learning Area 4/7/17



Kitchen Area 4/7/17

ARCHITECT'S MONTHLY REPORT 09

TO: STAN REDDISH	FROM: STEPHEN J. CARROLL
FIRM: SJCSO	DATE: MARCH 13, 2017
EMAIL: Stan Reddish <stan.reddish@stjohns.k12.fl.us>	
SSA #: 1620105	Present:
PROJECT NAME: St. Johns County Elementary School "M"	Stephen J. Carroll Stan Reddish

The following items have taken place for the project to date:

1. The RFI and Submittal process continues for the project and we are currently 99% of the way through the submittal process
2. Several ASIs and Change Orders are in process
3. Touch up of all tilt wall panels continues throughout the main building
4. Roofing cap sheet installation is approximately 60% complete
5. Metal Roofing areas are being decked
6. The Electrical, Mechanical, Plumbing, and Systems contractors are underway throughout and working to complete all above ceiling work
7. Framing and drywall continue in the kitchen and cafeteria areas
8. Drywall hanging and finishing continue throughout the building
9. Interior Painting in the classrooms is underway
10. Ceramic Tile at the bathrooms and water fountains has started
11. Acoustical Ceiling grid is being installed throughout the classroom areas
12. Window glazing is being installed
13. The Building 2 walls have been stood and readied for steel structure
14. The Chiller Plant walls have been erected and the steel has been set
15. The Ice Storage Yard slab formwork is being readied
16. The offsite utility are underway and approximately 90% complete
17. The exterior of the building is painted
18. The sealant samples have been reviewed and approved and panel joints are being installed throughout the project
19. Payment Application 08 was submitted on March 08, 2017

END OF REPORT



New Elementary School "M"

04.08.2017

Capital Projects Program April 2017 Report

Project: K-8 School "KK"

Background/Scope: The St. Johns County School District's current Five-Year Work Plan and Educational Plant Survey include a new K-8 school in northeast St. Johns County. The project was awarded at the August 2016 School Board Meeting. New K-8 School "KK" is an approximately 190,000 s.f., 1,496 student station, 73-classroom new school on a 37 -acre site and will be constructed to Green Building Standards. Project completion is scheduled for a 2018-2019 school year opening. Change Order #3 is being presented for approval at the May Board meeting.

Architect: Harvard Jolly Architecture

Contractor: Charles Perry Partners, Inc.

Project Manager: Dennis Ramharry

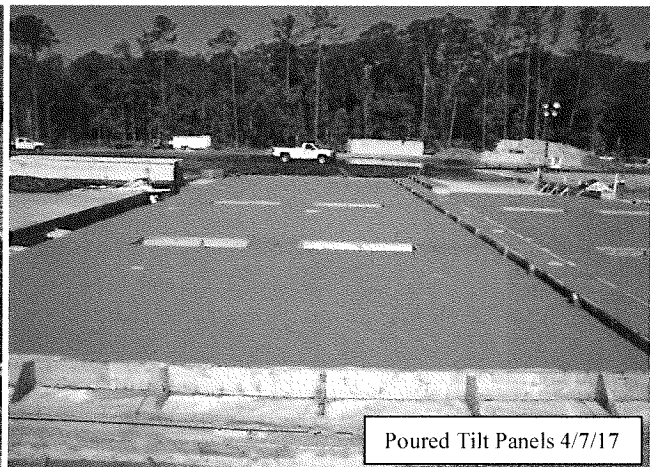
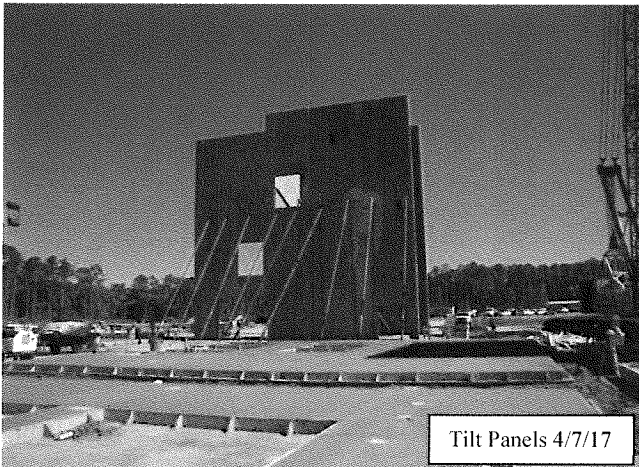
Contract Amounts:	Award Amount:	\$30,127,000.00
	Change Order #1	\$5,475,000.00 (Award of 2-story academic wing alternate)
	Change Order #2	<\$3,089,834.31>
	Change Order #3	<\$2,676,927.40>
	Current Contract Amount	\$29,835,238.29

Direct Purchases:	Total Owner Direct Purchases	\$5,697,973.81
	Total Tax Savings	\$342,528.43

Critical Dates:	Contract Award	08/09/16
	Notice to Proceed	09/08/16
	Substantial Completion	04/16/18
	Final Completion	05/16/18

Schedule: 24%

Status/Comments: Foundations, plumbing and electrical rough-ins are complete. Building slab is complete. Tilt-wall panel erection has commenced.



STATUS REPORT

DATE: April 10, 2017

TO: Paul Rose, Executive Director for Facilities and Operations

PROJECT: New K-8 School "KK"
St. Johns County School District
St. Augustine, Florida
District Bid #2016-16
Architects Project No. 16017.00
Monthly Status Report No. 8

GENERAL
CONTRACTOR: Charles Perry Partners, Inc.

CURRENT STATUS:

General/Site

1. Work continues on Old Palm Valley Road access re-alignment.
2. North parking lot is complete to sub-grade.
3. Underground plumbing and electrical rough-in are complete in all areas.
4. Slabs on grade are poured in all areas with the exception of the Kitchen.
5. All tilt panel casting beds are in place.
6. Tilt panel forming and reinforcing are ongoing at Building 300. 25 - 30 panels have been poured.
7. Crane is on site and the first tilt panels are being stood in place at Building 300.

Completion

1. Project is approximately 18% complete.

c: Dennis Ramharry, St. Johns County School District



New K-8 School “KK

School Site

04.08.2017



**St. Johns County School District
Capital Projects Program
April 2017 Report**

Project: K-8 School "LL"

Background/Scope: The St. Johns County School District's current Five-Year Work Plan and Educational Plant Survey include a new K-8 school in northwest St. Johns County. The project was awarded at the September 2016 School Board Meeting. New K-8 School "LL" is an approximately 190,000 s.f., 1,496 student station, 73-classroom new school on a 20-acre site and will be constructed to Green Building Standards. Project completion is scheduled for a 2018-2019 school year opening. Change Order #1 is being presented for approval at the May Board meeting.

Architect: Harvard Jolly Architecture

Contractor: AFL Construction, LLC

Project Manager: Dennis Ramharry

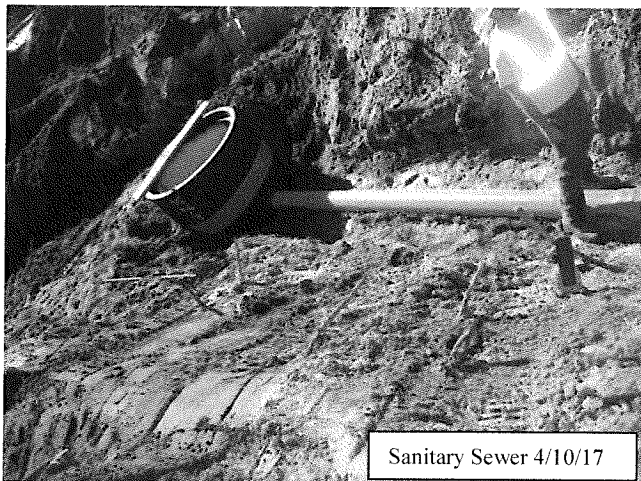
Contract Amounts:	Award Amount:	\$33,308,000.00
	Change Order #1	\$6,507,248.35
	Current Contract Amount	\$26,800,751.65

Direct Purchases:	Total Owner Direct Purchases	\$6,143,105.65
	Total Tax Savings	\$369,297.14

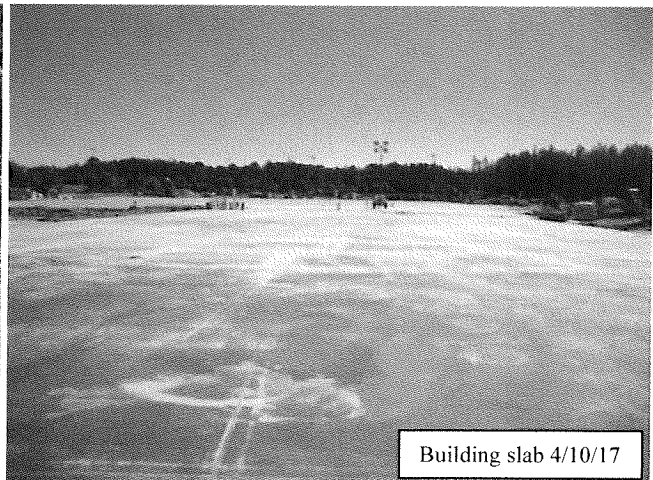
Critical Dates:	Contract Award	09/13/16
	Notice to Proceed	09/28/16
	Substantial Completion	05/15/18
	Final Completion	06/15/18

Schedule: 17%

Status/Comments: Storm and sanitary sewer installation is progressing. Electrical and mechanical rough-ins are complete. Most of the floor slab has been poured. Tilt-wall panel formwork and pouring is ongoing.



Sanitary Sewer 4/10/17



Building slab 4/10/17

STATUS REPORT

DATE: April 10, 2017

TO: Paul Rose, Executive Director for Facilities and Operations

PROJECT: New K-8 School "LL"
St. Johns County School District
St. Augustine, Florida
District Bid #2016-28
Architects Project No. 16018.00
Monthly Status Report No. 8

GENERAL
CONTRACTOR: AFL Construction, LLC

CURRENT STATUS:

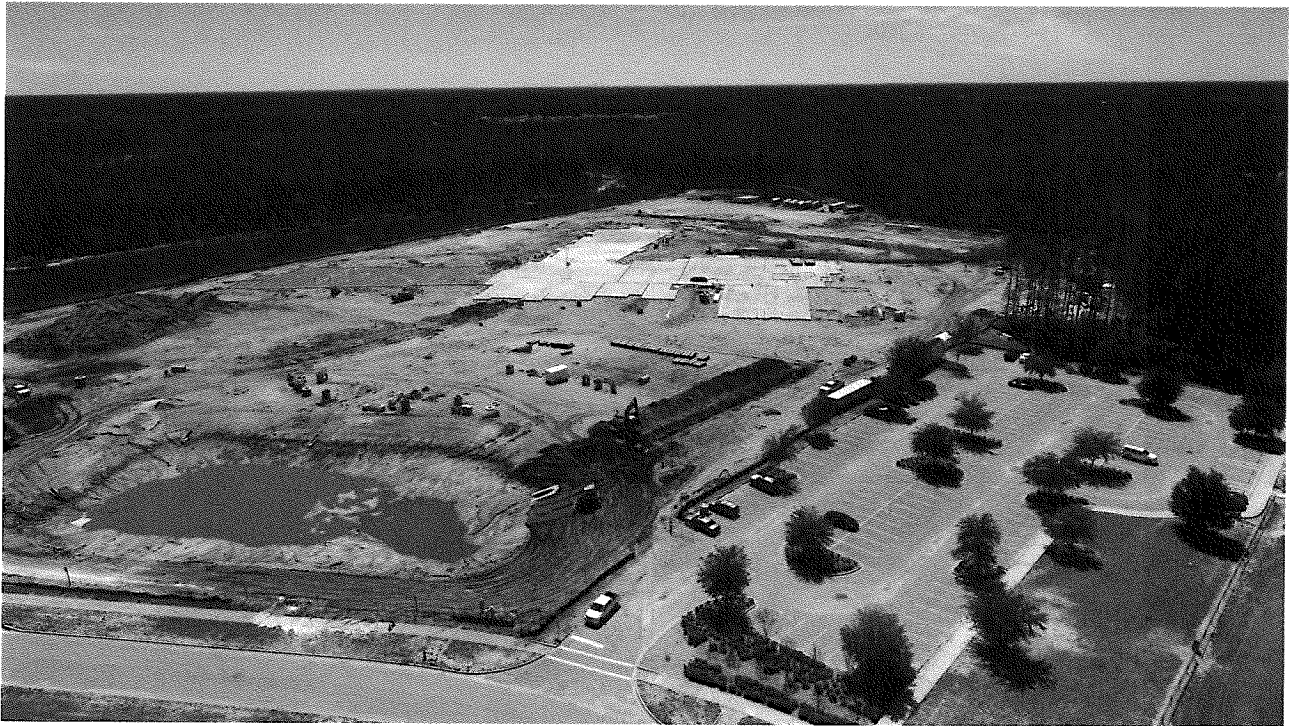
General/Site

1. Site grading is complete.
2. Site storm water system is complete.
3. Site water piping is underway.
4. All foundations have been poured for the main Building.
5. Underground plumbing is complete.
6. Underground electrical rough-in is complete all Buildings.
7. Slab on grade has been poured in the main Building except the Kitchen and Building 200.
8. Concrete wall panel forming is ongoing in Building 800.

Project Completion

1. Project is approximately 12% complete.

c: Dennis Ramharry, St. Johns County School District



New K-8 School "LL"

School Site

04.07.2017

Section 4.

CAPITAL PROJECTS STATUS REPORT – APRIL 2017

Minor Capital Improvement Projects

- ♦ Minor Capital Improvements Projects Report Spreadsheet attached

**MINOR CAPITAL IMPROVEMENT PROJECTS
MONTHLY CONSTRUCTION STATUS REPORT
April 2017**

Project	Location	Project Manager/Engineer	Architect/Engineer	Contract Award Date	Contractor	Project Amount (*)	Completion Date (Est./Act.)	Projects Status / Remarks
Dining Additions	PBMS	Stan Reddish	Bhide & Hall Architects	11/8/16	RB Marks Construction	\$750,000.00	Spring 2017	Additional dining space for students to alleviate overcrowding in the existing facilities. Completion is scheduled for the end of April.
Dining Addition	VRA	Stan Reddish	Bhide & Hall Architects	11/8/16	DiMare Construction Company	\$500,000.00	Spring 2017	Additional dining space for students to alleviate overcrowding in the existing facilities. Completion is scheduled for the end of April.
Window Replacement Shelter Upgrade Project	Creekside High School	Dennis Ramharry	Bhide & Hall Architects	2/14/17	C.C. Borden Construction, Inc.	\$397,600.00	Summer 2017	Improvements to existing CHS facility in order to provide additional shelter capacity for the county. A contract was awarded to C.C. Borden Construction, Inc. at the February 14, 2017 School Board meeting. Work will begin immediately following the completion of the of 2016-2017 school year.

*Project amount includes all applicable construction contract amounts, architect and engineer fees, and Owner Direct Purchases costs.

Completed / Closed - Out Projects

Project	Location	Project Manager/Engineer	Architect/Engineer	Contract Award Date	Contractor	Project Amount (*)	Completion Date (Est./Act.)	Projects Status / Remarks
SJTHS Cullinary Program	SJTHS	David Lee	Jax Design Group, Inc.	Various	Various	\$300,000	Summer 2016	Improvements to existing SJTHS facilities to enhance the school cullinary program.

Section 5.

CAPITAL PROJECTS STATUS REPORT – MARCH 2017

Projects in Close-Out/Final Stage

- ◆ New K-8 School “HH” - Patriot Oaks Academy – Project is substantially complete. Project was under litigation status due to extensive paint delamination. Final settlement agreement was reached, with full and final settlement payment received on April 7, 2017.
- ◆ New K-8 School “II”- Valley Ridge Academy – Project is substantially complete. Project was under litigation status due to extensive paint delamination. Final settlement agreement was reached, with full and final settlement payment received on April 7, 2017.

Completed Projects

- Crookshank Elementary School Classroom Addition – (Board Final Acceptance 12-13-16). [Note: for additional information on this project, please refer to the report for the month final acceptance was taken.]

Section 6.

CAPITAL PROJECTS STATUS REPORT – APRIL 2017

Financial Information

- 2016-2017 Capital Outlay Budget
- Financial Report

ST. JOHNS COUNTY SCHOOL DISTRICT
CAPITAL OUTLAY BUDGET 2016-2017

FACILITY NAME:	CONTINUING PROJECTS 2016-2017	NEW PROJECTS 2016-2017	EQUIPMENT PURCHASES 2016-2017	DISTRICT-WIDE MAINTENANCE 2016-2017	TOTAL
Crookshank	\$2,538,801.00	\$0.00	\$10,615.00	\$16,850.00	\$2,566,266.00
Cunningham Creek	\$128,248.00	\$0.00	\$13,875.00	\$27,600.00	\$169,723.00
Durbin Creek	\$155,454.00	\$0.00	\$9,495.00	\$2,000.00	\$166,949.00
Hartley	\$84,434.00	\$0.00	\$9,044.00	\$5,000.00	\$98,478.00
Hickory Creek	\$137,058.00	\$0.00	\$8,813.00	\$17,300.00	\$163,171.00
R. B. Hunt	\$125,379.00	\$0.00	\$10,038.00	\$0.00	\$135,417.00
Julington Creek	\$168,710.00	\$0.00	\$10,496.00	\$14,600.00	\$193,806.00
Ketterlinus	\$188,779.00	\$0.00	\$8,180.00	\$8,200.00	\$205,159.00
Mason	\$866,129.00	\$0.00	\$10,155.00	\$50,900.00	\$927,184.00
Mill Creek	\$254,084.00	\$0.00	\$14,082.00	\$30,150.00	\$298,316.00
Ocean Palms	\$118,813.00	\$0.00	\$13,553.00	\$6,550.00	\$138,916.00
Osceola	\$245,722.00	\$0.00	\$9,196.00	\$17,950.00	\$272,868.00
Palencia	\$92,029.00	\$0.00	\$8,348.00	\$10,560.00	\$110,937.00
PV-PV/Rawlings	\$177,672.00	\$0.00	\$14,890.00	\$46,900.00	\$239,462.00
South Woods	\$190,196.00	\$0.00	\$8,903.00	\$193,900.00	\$392,999.00
Timberlin Creek	\$120,188.00	\$0.00	\$11,466.00	\$0.00	\$131,654.00
Wards Creek	\$61,345.00	\$0.00	\$11,051.00	\$21,900.00	\$94,296.00
Webster	\$387,485.00	\$0.00	\$9,505.00	\$56,000.00	\$452,990.00
New Elementary School "M"	\$19,596,055.00	\$3,800,000.00	\$0.00	\$0.00	\$23,396,055.00
Fruit Cove Middle	\$94,869.00	\$0.00	\$14,054.00	\$12,500.00	\$121,423.00
Landrum	\$168,175.00	\$0.00	\$15,588.00	\$49,000.00	\$232,763.00
Murray	\$221,842.00	\$0.00	\$11,928.00	\$167,470.00	\$401,240.00
Pacetti Bay	\$159,045.00	\$150,000.00	\$15,829.00	\$0.00	\$324,874.00
Gamble Rogers	\$216,345.00	\$0.00	\$12,875.00	\$13,000.00	\$242,220.00
Sebastian	\$344,306.00	\$0.00	\$10,303.00	\$32,700.00	\$387,309.00
Switzerland Point	\$199,618.00	\$0.00	\$17,000.00	\$2,000.00	\$218,618.00
New Middle School "JJ"	\$0.00	\$403,954.00	\$0.00	\$0.00	\$403,954.00
Liberty Pines (K-8)	\$215,880.00	\$0.00	\$14,464.00	\$0.00	\$230,344.00
Patriot Oaks (K-8)	\$378,628.00	\$0.00	\$15,922.00	\$7,000.00	\$401,550.00
Valley Ridge (K-8)	\$5,676,874.00	\$0.00	\$18,704.00	\$3,170.00	\$5,698,748.00
New K-8 School "KK"	\$11,860,418.00	\$11,428,198.00	\$0.00	\$0.00	\$23,288,616.00
New K-8 School "LL"	\$29,244,514.00	\$4,411,401.00	\$0.00	\$0.00	\$33,655,915.00
Bartram Trail	\$678,506.00	\$0.00	\$21,795.00	\$56,600.00	\$756,901.00
Creekside	\$3,935,380.00	\$0.00	\$18,050.00	\$90,000.00	\$4,043,430.00
Pedro Menendez	\$907,254.00	\$0.00	\$15,037.00	\$115,500.00	\$1,037,791.00
Nease	\$16,532,820.00	\$316,863.00	\$25,388.00	\$83,400.00	\$16,958,471.00
Ponte Vedra	\$183,059.00	\$0.00	\$16,580.00	\$123,520.00	\$323,159.00
SAHS	\$299,977.00	\$0.00	\$20,410.00	\$78,050.00	\$398,437.00
St. Johns Technical High School	\$611,154.00	\$0.00	\$6,488.00	\$17,190.00	\$634,832.00
Hamblen Center/Gaines/Transition	\$121,774.00	\$0.00	\$17,880.00	\$43,300.00	\$182,954.00
ESE	\$0.00	\$0.00	\$0.00	\$0.00	\$0.00
District Admin. Buildings	\$293,081.00	\$0.00	\$0.00	\$50,000.00	\$343,081.00
Media /Inservice/Fullerwood	\$132,292.00	\$0.00	\$0.00	\$30,000.00	\$162,292.00
Purchasing/Property	\$8,168.00	\$0.00	\$0.00	\$0.00	\$8,168.00
Technology Plan	\$328,924.00	\$4,628,754.00	\$0.00	\$0.00	\$4,957,678.00
Student Services/Yates Center	\$0.00	\$0.00	\$0.00	\$30,000.00	\$30,000.00
Transportation	\$961,802.00	\$11,702.00	\$0.00	\$0.00	\$973,504.00
Buses/Vehicles	\$2,869,937.00	\$2,217,314.00	\$0.00	\$0.00	\$5,087,251.00
Facility	\$0.00	\$0.00	\$0.00	\$30,000.00	\$30,000.00
Subtotal	\$3,831,739.00	\$2,229,016.00	\$0.00	\$30,000.00	\$6,090,755.00
Maintenance	\$0.00	\$4,930,199.00	\$0.00	\$197,297.00	\$5,127,496.00
District-Wide	\$7,068,371.00	\$0.00	\$0.00	\$650,000.00	\$7,718,371.00
Facility	\$0.00	\$0.00	\$0.00	\$20,000.00	\$20,000.00
Subtotal	\$7,068,371.00	\$4,930,199.00	\$0.00	\$867,297.00	\$12,865,867.00
District-Wide	\$28,996,360.00	\$660,000.00	\$0.00	\$0.00	\$29,656,360.00
Equipment Purchases	\$100,470.00	\$60,000.00	\$30,000.00	\$0.00	\$190,470.00
Relocatables	\$2,911,915.00	\$500,000.00	\$0.00	\$0.00	\$3,411,915.00
Subtotal	\$32,008,745.00	\$1,220,000.00	\$30,000.00	\$0.00	\$33,258,745.00
Land Purchase - District Wide	\$0.00	\$0.00	\$0.00	\$0.00	\$0.00
Reserves	\$433,113.00	\$0.00	\$0.00	\$0.00	\$433,113.00
COP's Payments (Debt Service)	\$0.00	\$18,054,495.00	\$0.00	\$0.00	\$18,054,495.00
Transfers:	\$0.00	\$0.00	\$0.00	\$0.00	\$0.00
Operating	\$0.00	\$5,725,210.00	\$0.00	\$0.00	\$5,725,210.00
FCTC	\$0.00	\$0.00	\$0.00	\$0.00	\$0.00
Subtotal	\$0.00	\$5,725,210.00	\$0.00	\$0.00	\$5,725,210.00
TOTAL	\$141,791,452.00	\$57,298,090.00	\$510,000.00	\$2,428,057.00	\$202,027,599.00

CAPITAL OUTLAY PROJECTS REPORT AS OF 3/31/17

FAC. #	FACILITY/PROJECT	CONTINUING PROJECTS BUDGET	NEW PROJECTS BUDGET	TOTAL BUDGET	YTD EXPENDED	YTD ENCUMBERED	YTD UNENCUM
0021	CROOKSHANK						
	EQUIPMENT PURCHASES	\$16,667	\$10,615	\$27,282		\$4,114	\$23,168
	EXISTING CONDITIONS	\$86,154	\$16,850	\$103,004	\$44,439	\$17,712	\$40,852
	SCHOOL-BASED MAINTENANCE	\$17,286	\$10,000	\$27,286	\$9,033		\$18,254
	MAINTENANCE	\$1,460		\$1,460			\$1,460
	EXPANSION	\$2,164,320		\$2,164,320	\$753,839	\$309,521	\$1,100,960
	SUBTOTAL	\$2,285,887	\$37,465	\$2,323,352	\$807,311	\$331,347	\$1,184,694
0032	HAMBLEN CENTER (formerly Gaines)						
	EQUIPMENT PURCHASES	\$10,920	\$8,968	\$19,888	\$11,191		\$8,697
	EXISTING CONDITIONS	\$62,965	\$38,300	\$101,265	\$8,124		\$93,140
	MAINTENANCE		\$5,000	\$5,000			\$5,000
	RELOCATABLES - FURNISHINGS	\$17,426		\$17,426		\$17,426	\$0
	SCHOOL-BASED MAINTENANCE	\$10,800	\$2,500	\$13,300	\$2,000		\$11,300
	SUBTOTAL	\$102,111	\$54,768	\$156,879	\$21,315	\$17,426	\$118,138
0033	ST JOHNS TECHNICAL HIGH SCHOOL						
	EQUIPMENT PURCHASES	\$17,934	\$6,488	\$24,422	\$1,400		\$23,022
	EXISTING CONDITIONS	\$51,648	\$17,190	\$68,838	\$6,552	\$5,176	\$57,110
	SCHOOL-BASED MAINTENANCE	\$1,279	\$5,000	\$6,279	\$2,500		\$3,779
	MAINTENANCE	\$26,069		\$26,069	\$6,190		\$19,879
	ROOFING PROJECT	\$85,474		\$85,474	\$1,528	\$9,746	\$74,200
	RELOCATABLES - FURNISHINGS	\$8,761		\$8,761	\$8,761		\$0
	SJTHS CULINARY PROGRAM	\$295,250		\$295,250	\$271,147	\$4,763	\$19,340
	UPGRADE AIR HANDLER	\$115,000		\$115,000	\$52,938	\$23,278	\$38,784
	SUBTOTAL	\$601,415	\$28,678	\$630,093	\$351,016	\$42,964	\$236,114
0061	SJC TRANSITION PROGRAM						
	SCHOOL-BASED MAINTENANCE	\$9,792	\$2,500	\$12,292			\$12,292
	EQUIPMENT PURCHASES	\$27,297	\$8,912	\$36,209	\$19,098	\$3,597	\$13,514
	SUBTOTAL	\$37,089	\$11,412	\$48,501	\$19,098	\$3,597	\$25,806

CAPITAL OUTLAY PROJECTS REPORT AS OF 3/31/17

FAC. #	FACILITY/ PROJECT	CONTINUING PROJECTS BUDGET	NEW PROJECTS BUDGET	TOTAL BUDGET	YTD EXPENDED	YTD ENCUMBERED	YTD UNENCUM
0091	KETTERLINUS						
	EQUIPMENT PURCHASES	\$10,700	\$8,180	\$18,880		\$2,322	\$16,558
	EXISTING CONDITIONS	\$52,992	\$8,200	\$61,192			\$61,192
	MAINTENANCE	\$45,000		\$45,000			\$45,000
	SCHOOL-BASED MAINTENANCE	\$8,217	\$10,000	\$18,217	\$4,350		\$13,867
	REPLACE ADMIN ROOF		\$250,000	\$250,000			\$250,000
	UPGRADE WINDOWS AND FRAMES		\$140,000	\$140,000			\$140,000
	UPGRADE HVAC	\$69,908		\$69,908	\$68,679		\$1,229
	CONTINUING PROJECTS	\$1,962		\$1,962			\$1,962
	SUBTOTAL	\$188,779	\$416,380	\$605,159	\$73,029	\$2,322	\$529,808
0161	R. B. HUNT ELEMENTARY						
	EQUIPMENT PURCHASES	\$238	\$10,038	\$10,276	\$6,054		\$4,222
	EXISTING CONDITIONS	\$71,136		\$71,136	\$6,845		\$64,291
	MAINTENANCE	\$31,369		\$31,369		\$21,734	\$9,635
	SCHOOL-BASED MAINTENANCE	\$2,916	\$10,000	\$12,916	\$4,536	\$7,689	\$691
	SUBTOTAL	\$105,658	\$20,038	\$125,696	\$17,435	\$29,423	\$78,839
0171	MURRAY MIDDLE						
	EQUIPMENT PURCHASES	\$10,909	\$11,928	\$22,837	\$22,419		\$419
	EXISTING CONDITIONS	\$113,435	\$159,470	\$272,905	\$80,909	\$10,048	\$181,948
	SCHOOL-BASED MAINTENANCE	\$4,535	\$12,500	\$17,035	\$15,000		\$2,035
	PRESSURE WASHING		\$8,000	\$8,000			\$8,000
	UPGRADE BUS LOOP WALKWAY COVER	\$3,374		\$3,374			\$3,374
	REPLACE HVAC UNITS	\$89,589		\$89,589	\$84,677		\$4,913
	SUBTOTAL	\$221,842	\$191,898	\$413,740	\$203,004	\$10,048	\$200,688

CAPITAL OUTLAY PROJECTS REPORT AS OF 3/31/17

FAC. #	FACILITY/ PROJECT	CONTINUING PROJECTS BUDGET	NEW PROJECTS BUDGET	TOTAL BUDGET	YTD EXPENDED	YTD ENCUMBERED	YTD UNENCUM
0181	SAHS						
	EQUIPMENT PURCHASES	\$4,163	\$20,410	\$24,573	\$2,485		\$22,088
	EXISTING CONDITIONS	\$107,418	\$63,050	\$170,468	\$10,765	\$7,495	\$152,209
	MAINTENANCE	\$18,187	\$15,000	\$33,187			\$33,187
	SCHOOL-BASED MAINTENANCE	\$20,145	\$15,000	\$35,145			\$35,145
	UPGRADE TENNIS COURTS	\$130,949		\$130,949	\$122,979		\$7,970
	SUBTOTAL	\$280,861	\$113,460	\$394,321	\$136,228	\$7,495	\$250,598
0201	WEBSTER						
	EQUIPMENT PURCHASES	\$16,990	\$9,505	\$26,495	\$15,778		\$10,717
	EXISTING CONDITIONS	\$110,876	\$50,000	\$160,876	\$80,787	\$23,795	\$56,294
	MAINTENANCE	\$49,378	\$6,000	\$55,378	\$44,388		\$10,990
	SCHOOL-BASED MAINTENANCE	\$11,619	\$10,000	\$21,619	\$8,618		\$13,001
	ROOF REPAIRS		\$65,000	\$65,000			\$65,000
	UPGRADE CLASSROOM DRYWALL	\$150,000		\$150,000	\$6,581	\$42,872	\$100,547
	SHADE STRUCTURE PLAYGROUND	\$40,000		\$40,000	\$32,702		\$7,298
	SUBTOTAL	\$378,863	\$140,505	\$519,368	\$188,854	\$66,668	\$263,846
0241	JULINGTON CREEK ELEMENTARY						
	EQUIPMENT PURCHASES	\$13,169	\$10,496	\$23,665		\$7,845	\$15,821
	EXISTING CONDITIONS	\$95,925	\$14,600	\$110,525	\$29,219	\$13,450	\$67,856
	SCHOOL-BASED MAINTENANCE	\$24,616	\$10,000	\$34,616	\$24,616		\$10,000
	MAINTENANCE	\$35,000		\$35,000	\$16,510		\$18,491
	REPLACE MAIN WATER LINES		\$25,000	\$25,000	\$21,081		\$3,919
	SUBTOTAL	\$168,710	\$60,096	\$228,806	\$91,425	\$21,295	\$116,087

CAPITAL OUTLAY PROJECTS REPORT AS OF 3/31/17

FAC. #	FACILITY/ PROJECT	CONTINUING PROJECTS BUDGET	NEW PROJECTS BUDGET	TOTAL BUDGET	YTD EXPENDED	YTD ENCUMBERED	YTD UNENCUM
0251	NEASE HIGH SCHOOL						
	EQUIPMENT PURCHASES	\$6,332	\$25,388	\$31,720			\$31,720
	EXISTING CONDITIONS	\$222,711	\$68,400	\$291,111	\$35,049	\$23,217	\$232,844
	MAINTENANCE	\$46,460	\$15,000	\$61,460		\$44,994	\$16,466
	SCHOOL-BASED MAINTENANCE	\$9,780	\$15,000	\$24,780	\$13,269		\$11,511
	RENOVATE PAC	\$7,216		\$7,216			\$7,216
	UPGRADE PAINTING	\$341,752		\$341,752			\$341,752
	SCHOOL EXPANSION "FFF" (310)	\$19,710,206	\$316,863	\$20,027,069	\$5,936,660	\$8,130,971	\$5,959,438
	TRACK REHAB (970)	\$32,228		\$32,228			\$32,228
	UPGRADE HVAC SYSTEM	\$301,851		\$301,851	\$23,314		\$278,537
	UPGRADE CHILL WATER LINES	\$466		\$466			\$466
	SUBTOTAL	\$20,679,002	\$440,651	\$21,119,653	\$6,008,293	\$8,199,183	\$6,912,178
0261	HARTLEY ELEMENTARY						
	EQUIPMENT PURCHASES	\$19,315	\$9,044	\$28,359	\$16,977		\$11,382
	EXISTING CONDITIONS	\$24,652		\$24,652			\$24,652
	SCHOOL-BASED MAINTENANCE	\$5,160	\$10,000	\$15,160	\$3,960		\$11,200
	MAINTENANCE	\$26,668	\$5,000	\$31,668		\$25,042	\$6,626
	ROOF REPAIRS		\$530,000	\$530,000			\$530,000
	REPLACE BOILER PIPING/CHILLER PUMPS	\$7,206		\$7,206			\$7,206
	SUBTOTAL	\$83,000	\$554,044	\$637,044	\$20,937	\$25,042	\$591,066
0301	SEBASTIAN MIDDLE						
	EQUIPMENT PURCHASES	\$10,327	\$10,303	\$20,630	\$3,693	\$1,058	\$15,878
	EXISTING CONDITIONS	\$179,381	\$19,700	\$199,081	\$88,291		\$110,790
	MAINTENANCE	\$85,000	\$13,000	\$98,000	\$55,349		\$42,651
	SCHOOL-BASED MAINTENANCE	\$14,520	\$12,500	\$27,020	\$14,520	\$7,093	\$5,407
	CONTINUING PROJECTS	\$49,957		\$49,957	\$14,475		\$35,482
	SUBTOTAL	\$339,185	\$55,503	\$394,688	\$176,329	\$8,151	\$210,208

CAPITAL OUTLAY PROJECTS REPORT AS OF 3/31/17

FAC. #	FACILITY/PROJECT	CONTINUING PROJECTS BUDGET	NEW PROJECTS BUDGET	TOTAL BUDGET	YTD EXPENDED	YTD ENCUMBERED	YTD UNENCUM
0311	LANDRUM MIDDLE						
	EQUIPMENT PURCHASES	\$11,072	\$15,588	\$26,660	\$7,631	\$12,907	\$6,121
	EXISTING CONDITIONS	\$151,981	\$49,000	\$200,981	\$49,870	\$4,465	\$146,646
	SCHOOL-BASED MAINTENANCE	\$1,168	\$12,500	\$13,668		\$6,439	\$7,229
	RELOCATABLES - FURNISHINGS	\$17,000		\$17,000			\$17,000
	DINING ROOM RENOVATIONS	\$2,494		\$2,494	\$2,276		\$218
	SUBTOTAL	\$183,715	\$77,088	\$260,803	\$59,777	\$23,812	\$177,214
0321	SWITZERLAND POINT MIDDLE						
	EQUIPMENT PURCHASES	\$11,301	\$17,000	\$28,301	\$2,665	\$7,301	\$18,335
	EXISTING CONDITIONS	\$179,462	\$2,000	\$181,462	\$86,345		\$95,117
	RELOCATABLES - FURNISHINGS	\$17,000		\$17,000		\$6,732	\$10,268
	SCHOOL-BASED MAINTENANCE	\$6,257	\$12,500	\$18,757	\$13,020		\$5,736
	SUBTOTAL	\$214,020	\$31,500	\$245,520	\$102,030	\$14,033	\$129,457
0331	OSCEOLA ELEMENTARY						
	EQUIPMENT PURCHASES	\$13,439	\$9,196	\$22,635	\$13,383		\$9,252
	EXISTING CONDITIONS	\$105,426	\$17,950	\$123,376	\$61,330	\$2,098	\$59,948
	MAINTENANCE	\$64,755		\$64,755	\$34,555	\$25,447	\$4,753
	SCHOOL-BASED MAINTENANCE	\$27,787	\$10,000	\$37,787	\$22,291		\$15,495
	UPGRADE RELOCATABLE FRAMING	\$32,000		\$32,000			\$32,000
	SUBTOTAL	\$243,407	\$37,146	\$280,553	\$131,560	\$27,545	\$121,448
0341	MILL CREEK ELEMENTARY						
	EQUIPMENT PURCHASES	\$39,331	\$14,082	\$53,413			\$53,413
	EXISTING CONDITIONS	\$71,971	\$25,150	\$97,121	\$10,624	\$18,814	\$67,683
	SCHOOL-BASED MAINTENANCE	\$32,404	\$10,000	\$42,404	\$5,400	\$9,019	\$27,985
	MAINTENANCE	\$64,233	\$5,000	\$69,233	\$33,621	\$19,262	\$16,350
	RELOCATABLES - FURNISHINGS	\$35,566		\$35,566	\$35,566		\$0
	REPAINT ROOF		\$130,000	\$130,000			\$130,000
	LIFT STATIONS	\$8,378		\$8,378		\$6,250	\$2,128
	SUBTOTAL	\$251,883	\$184,232	\$436,115	\$85,212	\$53,345	\$297,559

CAPITAL OUTLAY PROJECTS REPORT AS OF 3/31/17

FAC. #	FACILITY/ PROJECT	CONTINUING PROJECTS BUDGET	NEW PROJECTS BUDGET	TOTAL BUDGET	YTD EXPENDED	YTD ENCUMBERED	YTD UNENCUM
0351	RAWLINGS ELEMENTARY						
	EQUIPMENT PURCHASES	\$2,356	\$14,890	\$17,246	\$8,208	\$8,745	\$293
	EXISTING CONDITIONS	\$93,531	\$46,900	\$140,431	\$96,785	\$35,238	\$8,408
	SCHOOL-BASED MAINTENANCE	\$19,748	\$10,000	\$29,748	\$29,725		\$29,748
	MAINTENANCE	\$45,000		\$45,000	\$30,894		\$14,106
	MOSQUITO CONTROL RD IMPROVEMENTS	\$25,000		\$25,000			\$25,000
	PIPING UNDERGROUND WATER SERVICE		\$22,122	\$22,122			\$22,122
	PIPING KITCHEN		\$26,650	\$26,650		\$26,650	\$0
	WINDOW REPLACEMENT		\$45,000	\$45,000		\$32,038	\$12,962
	SUBTOTAL	\$185,635	\$165,562	\$351,197	\$165,612	\$102,671	\$82,913
0361	OTIS MASON ELEMENTARY						
	EQUIPMENT PURCHASES	\$9,795	\$10,155	\$19,950	\$7,791	\$1,250	\$10,909
	EXISTING CONDITIONS	\$66,118	\$45,900	\$112,018	\$17,082	\$25,787	\$69,149
	MAINTENANCE	\$27,431	\$5,000	\$32,431	\$763	\$21,168	\$10,500
	ROOFING PROJECT	\$730,872		\$730,872	\$6,288	\$12,016	\$712,568
	SCHOOL-BASED MAINTENANCE	\$28,122	\$10,000	\$38,122	\$11,183	\$4,619	\$22,321
	SUBTOTAL	\$862,338	\$71,055	\$933,393	\$43,107	\$64,840	\$825,446
0371	GAMBLE ROGERS MIDDLE						
	EQUIPMENT PURCHASES	\$32,803	\$12,875	\$45,678	\$18,756	\$1,409	\$25,513
	EXISTING CONDITIONS	\$26,282		\$26,282		\$11,856	\$14,426
	MAINTENANCE	\$40,000	\$13,000	\$53,000	\$34,523		\$18,477
	SCHOOL-BASED MAINTENANCE	\$26,800	\$12,500	\$39,300	\$2,200		\$37,100
	UPGRADE SCIENCE LABS		\$180,000	\$180,000		\$112,490	\$67,510
	UPGRADE EMS	\$90,000		\$90,000		\$90,000	\$0
	SUBTOTAL	\$215,885	\$218,375	\$434,260	\$55,479	\$215,755	\$163,026
0381	CUNNINGHAM CREEK ELEMENTARY						
	EQUIPMENT PURCHASES		\$13,875	\$13,875	\$2,400	\$4,936	\$6,539
	EXISTING CONDITIONS	\$58,997	\$27,600	\$86,597	\$52,703	\$3,755	\$30,139
	MAINTENANCE	\$31,595		\$31,595		\$25,537	\$6,058
	SCHOOL-BASED MAINTENANCE	\$37,226	\$10,000	\$47,226	\$22,677	\$13,205	\$11,344
	SUBTOTAL	\$127,817	\$51,475	\$179,292	\$77,780	\$47,433	\$54,080

CAPITAL OUTLAY PROJECTS REPORT AS OF 3/31/17

FAC. #	FACILITY/ PROJECT	CONTINUING PROJECTS BUDGET	NEW PROJECTS BUDGET	TOTAL BUDGET	YTD EXPENDED	YTD ENCUMBERED	YTD UNENCUM
0391	OCEAN PALMS ELEMENTARY						
	EQUIPMENT PURCHASES	\$17,739	\$13,553	\$31,292	\$5,922	\$3,015	\$22,355
	EXISTING CONDITIONS	\$64,735	\$6,550	\$71,285	\$14,694		\$56,591
	SCHOOL-BASED MAINTENANCE	\$20,339	\$10,000	\$30,339	\$8,058	\$10,869	\$11,412
	RELOCATABLES - FURNISHINGS	\$51,000		\$51,000		\$736	\$50,264
	UPGRADE EMS	\$16,000		\$16,000			\$16,000
	SUBTOTAL	\$169,813	\$30,103	\$199,916	\$28,675	\$14,620	\$156,622
0401	PEDRO MENENDEZ HIGH SCHOOL						
	EQUIPMENT PURCHASES	\$20,241	\$15,037	\$35,278	\$15,058	\$2,639	\$17,581
	EXISTING CONDITIONS	\$378,094	\$100,500	\$478,594	\$100,104	\$39,995	\$338,495
	MAINTENANCE		\$15,000	\$15,000			\$15,000
	SCHOOL-BASED MAINTENANCE	\$21,683	\$15,000	\$36,683	\$10,765		\$25,918
	UPGRADE HOT WATER LINES	\$100,000		\$100,000	\$76,744		\$23,256
	UPGRADE CHILLER	\$300,000		\$300,000			\$300,000
	TRACK REHAB (970)	\$40,000		\$40,000	\$40,000		\$0
	SUBTOTAL	\$860,018	\$145,537	\$1,005,555	\$242,671	\$42,634	\$720,250
0411	BARTRAM TRAIL HIGH SCHOOL						
	EQUIPMENT PURCHASES	\$29,169	\$21,795	\$50,964	\$4,980		\$45,984
	EXISTING CONDITIONS	\$66,705	\$41,600	\$108,305	\$6,335		\$101,970
	MAINTENANCE	\$15,000	\$15,000	\$30,000			\$30,000
	SCHOOL-BASED MAINTENANCE	\$20,904	\$15,000	\$35,904	\$9,600		\$26,304
	RELOCATABLES	\$14,248		\$14,248	\$14,248		\$0
	9TH GRADE CENTER IMPROVEMENTS	\$120,000		\$120,000	\$34,827		\$85,173
	UPGRADE CHILLER	\$371,835	\$500,000	\$871,835	\$243,839	\$335,973	\$292,023
	TRACK REHAB (970)	\$40,000		\$40,000	\$38,803		\$1,197
	SUBTOTAL	\$677,861	\$593,395	\$1,271,256	\$352,632	\$335,973	\$582,651

CAPITAL OUTLAY PROJECTS REPORT AS OF 3/31/17

FAC. #	FACILITY/ PROJECT	CONTINUING PROJECTS BUDGET	NEW PROJECTS BUDGET	TOTAL BUDGET	YTD EXPENDED	YTD ENCUMBERED	YTD UNENCUM
0441	DURBIN CREEK ELEMENTARY						
	EQUIPMENT PURCHASES	\$18,900	\$9,495	\$28,395	\$5,038	\$11,936	\$11,421
	EXISTING CONDITIONS	\$71,209	\$2,000	\$73,209	\$2,254	\$23,102	\$47,853
	MAINTENANCE	\$28,968		\$28,968	\$28,968		\$0
	SCHOOL-BASED MAINTENANCE	\$29,118	\$10,000	\$39,118	\$13,412		\$25,706
	SUBTOTAL	\$148,196	\$21,495	\$169,691	\$49,672	\$35,038	\$84,980
0451	TIMBERLIN CREEK ELEMENTARY						
	EQUIPMENT PURCHASES	\$2,230	\$11,466	\$13,696			\$13,696
	EXISTING CONDITIONS	\$57,173		\$57,173	\$31,800		\$25,373
	MAINTENANCE	\$44,389		\$44,389	\$44,389		\$0
	SCHOOL-BASED MAINTENANCE	\$11,785	\$10,000	\$21,785	\$1,905		\$19,880
	UPGRADE EMS	\$4,000		\$4,000			\$4,000
	SUBTOTAL	\$119,577	\$21,466	\$141,043	\$78,093	\$0	\$62,949
0461	SOUTH WOODS ELEMENTARY						
	EQUIPMENT PURCHASES	\$28,614	\$8,903	\$37,517	\$2,698	\$16,328	\$18,491
	EXISTING CONDITIONS	\$67,165	\$193,900	\$261,065	\$46,975	\$34,616	\$179,474
	MAINTENANCE	\$65,473		\$65,473	\$54,850		\$10,622
	SCHOOL-BASED MAINTENANCE	\$28,843	\$10,000	\$38,843	\$3,830		\$35,013
	PAINT WATER TREATMENT PLANT		\$42,400	\$42,400	\$32,150		\$10,250
	SUBTOTAL	\$190,094	\$255,203	\$445,297	\$140,503	\$50,944	\$253,849
0471	PATRIOT OAKS ACADEMY						
	EQUIPMENT PURCHASES	\$941	\$15,922	\$16,863	\$5,120	\$970	\$10,773
	EXISTING CONDITIONS	\$32,839	\$7,000	\$39,839	\$13,530		\$26,309
	SCHOOL-BASED MAINTENANCE	\$3,818	\$12,500	\$16,318	\$16,300		\$18
	RELOCATABLES - FURNISHINGS	\$59,093		\$59,093	\$25,093		\$34,000
	LOCKERS	\$23,606		\$23,606		\$23,606	\$0
	CONTINUING PROJECTS	\$315,764		\$315,764	\$48,674	\$265,800	\$1,290
	SUBTOTAL	\$436,061	\$35,422	\$471,483	\$108,718	\$290,375	\$72,390

CAPITAL OUTLAY PROJECTS REPORT AS OF 3/31/17

FAC. #	FACILITY/ PROJECT	CONTINUING PROJECTS BUDGET	NEW PROJECTS BUDGET	TOTAL BUDGET	YTD EXPENDED	YTD ENCUMBERED	YTD UNENCUM
0472	LIBERTY PINES ACADEMY						
	EQUIPMENT PURCHASES	\$22,915	\$14,464	\$37,379	\$1,076		\$36,303
	EXISTING CONDITIONS	\$30,576		\$30,576			\$30,576
	MAINTENANCE	\$70,000		\$70,000	\$8,988	\$21,012	\$40,000
	RELOCATABLES - FURNISHINGS	\$46,478		\$46,478	\$29,478		\$17,000
	SCHOOL-BASED MAINTENANCE	\$29,300	\$12,500	\$41,800	\$17,111		\$24,689
	SUBTOTAL	\$199,270	\$26,964	\$226,234	\$56,653	\$21,012	\$148,569
0481	PACETTI BAY MIDDLE						
	EQUIPMENT PURCHASES	\$14,679	\$15,829	\$30,508	\$22,321	\$7,634	\$553
	EXISTING CONDITIONS	\$47,328		\$47,328	\$29,902		\$17,426
	MAINTENANCE	\$11,460		\$11,460			\$11,460
	RELOCATABLES - FURNISHINGS	\$97,556		\$97,556	\$46,557	\$33,985	\$17,015
	SCHOOL-BASED MAINTENANCE	\$14,545	\$12,500	\$27,045	\$2,250	\$7,511	\$17,284
	DINING EXPANSION	\$600,000	\$122,847	\$722,847	\$348,914	\$354,028	\$19,905
	SUBTOTAL	\$785,568	\$151,176	\$936,744	\$449,943	\$403,157	\$83,643
0482	WARDS CREEK ELEMENTARY						
	EQUIPMENT PURCHASES	\$1,096	\$11,051	\$12,147			\$12,147
	EXISTING CONDITIONS	\$7,284	\$21,900	\$29,184	\$6,125		\$23,059
	MAINTENANCE	\$36,457		\$36,457	\$34,997		\$1,460
	SCHOOL-BASED MAINTENANCE	\$7,225	\$10,000	\$17,225			\$17,225
	SUBTOTAL	\$52,062	\$42,951	\$95,013	\$41,122	\$0	\$53,891
0491	FRUIT COVE MIDDLE						
	EQUIPMENT PURCHASES	\$14,883	\$14,054	\$28,937	\$10,684		\$18,253
	EXISTING CONDITIONS	\$71,885	\$12,500	\$84,385			\$84,385
	MAINTENANCE	\$8,000		\$8,000			\$8,000
	SCHOOL-BASED MAINTENANCE	\$101	\$12,500	\$12,601	\$2,420		\$10,181
	SUBTOTAL	\$94,869	\$39,054	\$133,923	\$13,104	\$0	\$120,819

CAPITAL OUTLAY PROJECTS REPORT AS OF 3/31/17

FAC. #	FACILITY/ PROJECT	CONTINUING PROJECTS BUDGET	NEW PROJECTS BUDGET	TOTAL BUDGET	YTD EXPENDED	YTD ENCUMBERED	YTD UNENCUM
0492	PONTE VEDRA HIGH SCHOOL						
	EQUIPMENT PURCHASES		\$16,580	\$16,580	\$15,949	\$550	\$81
	EXISTING CONDITIONS	\$107,593	\$78,520	\$186,113	\$92,466		\$93,647
	RELOCATABLES - FURNISHINGS	\$26,164		\$26,164	\$9,164		\$17,000
	MAINTENANCE	\$41,326	\$5,000	\$46,326		\$39,488	\$6,838
	SCHOOL-BASED MAINTENANCE	\$3,703	\$15,000	\$18,703	\$17,014	\$1,630	\$60
	TRACK REHAB		\$40,000	\$40,000	\$36,808	\$2,999	\$193
	SUBTOTAL	\$178,786	\$155,100	\$333,886	\$171,401	\$44,667	\$117,818
0493	CREEKSIDE HIGH SCHOOL						
	EQUIPMENT PURCHASES	\$2,799	\$18,050	\$20,849	\$2,799	\$10,378	\$7,672
	EXISTING CONDITIONS	\$58,472	\$45,000	\$103,472	\$11,262		\$92,211
	MAINTENANCE	\$71,310	\$5,000	\$76,310	\$21,446	\$40,000	\$14,864
	RELOCATABLES - FURNISHINGS	\$34,000		\$34,000			\$34,000
	SCHOOL-BASED MAINTENANCE	\$11,346	\$15,000	\$26,346	\$11,841	\$2,905	\$11,601
	TRACK REHAB		\$40,000	\$40,000			\$40,000
	SCHOOL EXPANSION "GGG" (310)	\$5,000		\$5,000			\$5,000
	SUBTOTAL	\$182,927	\$123,050	\$305,977	\$47,347	\$53,283	\$205,347
0501	HICKORY CREEK ELEMENTARY						
	EQUIPMENT PURCHASES	\$25,580	\$8,813	\$34,393	\$10,292		\$24,101
	EXISTING CONDITIONS	\$35,899	\$17,300	\$53,199	\$21,976		\$31,223
	MAINTENANCE	\$51,087		\$51,087	\$39,968		\$11,119
	SCHOOL-BASED MAINTENANCE	\$13,477	\$10,000	\$23,477	\$9,082		\$14,395
	SUBTOTAL	\$126,043	\$36,113	\$162,156	\$81,318	\$0	\$80,838

CAPITAL OUTLAY PROJECTS REPORT AS OF 3/31/17

FAC. #	FACILITY/ PROJECT	CONTINUING PROJECTS BUDGET	NEW PROJECTS BUDGET	TOTAL BUDGET	YTD EXPENDED	YTD ENCUMBERED	YTD UNENCUM
0502	VALLEY RIDGE ACADEMY						
	EQUIPMENT PURCHASES	\$2,449	\$18,704	\$21,153	\$3,527	\$2,449	\$15,177
	EXISTING CONDITIONS	\$20,020	\$3,170	\$23,190	\$3,168		\$20,022
	SCHOOL-BASED MAINTENANCE	\$8,125	\$12,500	\$20,625	\$14,007	\$5,694	\$923
	RELOCATABLES - FURNISHINGS	\$64,749		\$64,749	\$64,749		\$0
	CONSTRUCTION PROJECT	\$861,162	\$27,153	\$888,316	\$416,432	\$466,873	\$0
	SUBTOTAL	\$956,505	\$61,527	\$1,018,033	\$501,883	\$475,017	\$41,133
0511	PALENCIA ELEMENTARY						
	EQUIPMENT PURCHASES	\$29,787	\$8,348	\$38,135	\$8,900		\$29,235
	EXISTING CONDITIONS	\$6,935	\$5,560	\$12,495			\$12,495
	SCHOOL-BASED MAINTENANCE	\$7,096	\$10,000	\$17,096			\$17,096
	RELOCATABLES - FURNISHINGS	\$51,000		\$51,000			\$51,000
	CONTINUING PROJECT	\$26,816		\$26,816	\$26,816		\$0
	MAINTENANCE	\$4,851	\$5,000	\$9,851			\$9,851
	SUBTOTAL	\$126,484	\$28,908	\$155,392	\$35,716	\$0	\$119,676
0521	ELEMENTARY SCHOOL " M"						
	NEW CONSTRUCTION	\$19,596,055	\$3,800,000	\$23,396,055	\$13,156,516	\$8,531,178	\$1,708,361
	SUBTOTAL	\$19,596,055	\$3,800,000	\$23,396,055	\$13,156,516	\$8,531,178	\$1,708,361
0531	NEW K-8 SCHOOL "LL" ABERDEEN						
	NEW CONSTRUCTION	\$31,405,312	\$4,411,401	\$35,816,713	\$3,702,706	\$31,683,605	\$430,402
	SUBTOTAL	\$31,405,312	\$4,411,401	\$35,816,713	\$3,702,706	\$31,683,605	\$430,402
0541	NEW K-8 SCHOOL "KK" NOCATEE						
	NEW CONSTRUCTION	\$32,635,480	\$11,428,198	\$44,063,678	\$4,544,652	\$33,161,048	\$6,357,979
	SUBTOTAL	\$32,635,480	\$11,428,198	\$44,063,678	\$4,544,652	\$33,161,048	\$6,357,979
9061	MEDIA SERVICES/FULLERWOOD						
	EQUIPMENT PURCHASES	\$798		\$798			\$798
	EXISTING CONDITIONS	\$26,074	\$30,000	\$56,074	\$19,777		\$36,297
	MAINTENANCE	\$92,013		\$92,013	\$5,748	\$295	\$85,970
	SUBTOTAL	\$118,885	\$30,000	\$148,885	\$25,525	\$295	\$123,065

CAPITAL OUTLAY PROJECTS REPORT AS OF 3/31/17

FAC. #	FACILITY/PROJECT	CONTINUING PROJECTS BUDGET	NEW PROJECTS BUDGET	TOTAL BUDGET	YTD EXPENDED	YTD ENCUMBERED	YTD UNENCUM
9721	DISTRICT ADMIN BUILDINGS						
	EQUIPMENT PURCHASES	\$44,844		\$44,844	\$12,467		\$32,376
	MAINTENANCE	\$12,915		\$12,915		\$5,236	\$7,679
	EXISTING CONDITIONS	\$56,012	\$60,000	\$116,012	\$590	\$2,894	\$112,528
	SITE-BASED MAINTENANCE (095)	\$26,607	\$5,000	\$31,607	\$9,832	\$7,158	\$14,617
	HURRICANE DAMAGE REPAIRS	\$1,002,054		\$1,002,054	\$28,000	\$14,000	\$960,054
	CONTINUING PROJECTS (900)	\$57,992		\$57,992	\$12,454		\$45,537
	SUBTOTAL	\$1,200,423	\$65,000	\$1,265,423	\$63,343	\$29,288	\$1,172,791
9730	HUMAN RESOURCES						
	EQUIPMENT PURCHASES	\$5,196		\$5,196	\$3,882		\$1,314
	SUBTOTAL	\$5,196	\$0	\$5,196	\$3,882	\$0	\$1,314
9740	FACILITIES PLANNING/OPERATIONS						
	EQUIPMENT PURCH DISTRICT WIDE	\$93,076	\$30,000	\$123,076	\$11,168	\$5,161	\$106,746
	EXISTING CONDITIONS	\$39,792	\$20,000	\$59,792			\$59,792
	SREF DEFICIENCIES (054)	\$225,000		\$225,000			\$225,000
	MAINTENANCE	\$43,000		\$43,000			\$43,000
	DISTRICT WIDE - OTHER PROJECTS	\$1,122,403		\$1,122,403	\$20,409	\$83,498	\$1,018,495
	SAFETY INSPECTIONS	\$653,029	\$248,930	\$901,959	\$78,426	\$33,099	\$790,434
	MIDDLE SCHOOL "JJ"	\$812,670	\$403,954	\$1,216,624			\$1,216,624
	PROPORTIONATE SHARE MITIGATION	\$5,861,285		\$5,861,285	\$25,106		\$5,836,180
	AED REPLACEMENT	\$40,000	\$60,000	\$100,000			\$100,000
	TECHNOLOGY DISTRICT WIDE	\$482,003	\$4,628,754	\$5,110,757	\$1,228,247	\$2,240,936	\$1,641,574
	RELOCATABLES - FURNISHINGS	\$4,967		\$4,967			\$4,967
	RESERVES	\$280,034		\$280,034			\$280,034
	EXISTING CONDITIONS - FCTC		\$197,297	\$197,297	\$3,968	\$98,680	\$94,649
	TRANSFER TO DEBT SERVICE		\$18,054,495	\$18,054,495	\$2,954,943		\$15,099,552
	TRANSFERS TO OPERATING		\$5,671,490	\$5,671,490	\$5,638,015		\$33,475
	SUBTOTAL	\$9,657,259	\$29,314,920	\$38,972,179	\$9,960,282	\$2,461,374	\$26,550,523

CAPITAL OUTLAY PROJECTS REPORT AS OF 3/31/17

FAC. #	FACILITY/PROJECT	CONTINUING PROJECTS BUDGET	NEW PROJECTS BUDGET	TOTAL BUDGET	YTD EXPENDED	YTD ENCUMBERED	YTD UNENCUM
9749	BUSINESS AND FISCAL SERVICES						
	EQUIPMENT PURCHASES	\$53,312		\$53,312	\$43,683	\$9,629	\$0
	SUBTOTAL	\$53,312	\$0	\$53,312	\$43,683	\$9,629	\$0
9752	PURCHASING/PROPERTY						
	EQUIPMENT PURCHASES	\$3,663		\$3,663			\$3,663
	EXISTING CONDITIONS	\$4,505		\$4,505			\$4,505
	SUBTOTAL	\$8,168	\$0	\$8,168	\$0	\$0	\$8,168
9780	TRANSPORTATION						
	EXISTING CONDITIONS	\$11,840	\$30,000	\$41,840	\$7,979		\$33,861
	MAINTENANCE	\$27,940		\$27,940			\$27,940
	ROOF		\$260,000	\$260,000			\$260,000
	NEW PROJECTS	\$2,461	\$66,492	\$68,953	\$7,256	\$58,560	\$3,137
	MOTOROLA RADIO ENHANCEMENT SYSTEM	\$921,392		\$921,392	\$858,366		\$63,026
	BUSES/VEHICLES	\$2,869,937	\$2,217,314	\$5,087,251	\$2,431,040	\$2,174,193	\$482,018
	SUBTOTAL	\$3,833,570	\$2,573,806	\$6,407,376	\$3,304,642	\$2,232,753	\$869,982

CAPITAL OUTLAY PROJECTS REPORT AS OF 3/31/17

FAC. #	FACILITY/PROJECT	CONTINUING PROJECTS BUDGET	NEW PROJECTS BUDGET	TOTAL BUDGET	YTD EXPENDED	YTD ENCUMBERED	YTD UNENCUM
9810	MAINTENANCE						
	MAINTENANCE	\$35,000		\$35,000			\$35,000
	EXISTING CONDITIONS	\$28,000	\$20,000	\$48,000			\$48,000
	SITE-BASED MAINTENANCE	\$5,907		\$5,907			\$5,907
	RELOCATABLE SET-UP (183)	\$2,911,915	\$500,000	\$3,411,915	\$486,666	\$169,520	\$2,755,728
	SREF DEFICIENCIES (054)	\$305,528	\$200,000	\$505,528	\$111,728	\$17,290	\$376,511
	WETLANDS (180)	\$104,000	\$25,000	\$129,000	\$9,512	\$9,512	\$109,977
	VEHICLES	\$204,265	\$60,000	\$264,265	\$202,315		\$61,950
	ENVIRONMENTAL/REMEDATION (181)	\$374,925	\$125,000	\$499,925	\$33,280	\$6,295	\$460,350
	ROOFING PROJECTS (182)	\$556,521	\$300,000	\$856,521	\$141,220	\$43,492	\$671,810
	ENERGY MANAGEMENT PROGRAM (960)	\$228,149	\$75,000	\$303,149	\$38,224	\$18,146	\$246,780
	ENERGY EFFICIENCY PROGRAM (980)	\$57,555		\$57,555			\$57,555
	MISC. SCHOOL UPGRADES (990)	\$5,284		\$5,284			\$5,284
	HVAC REPLACEMENTS (940)	\$882,595	\$500,000	\$1,382,595	\$312,556	\$99,186	\$970,853
	CHILLER UPGRADES (930)	\$365,157	\$1,054,027	\$1,419,184	\$510,887	\$18,152	\$890,146
	GENERATOR INSPECTIONS/REPAIRS (965)	\$565,764	\$480,000	\$1,045,764	\$74,604	\$85,672	\$885,488
	UPGRADE ATHLETIC TRACKS (970)	\$23,729		\$23,729			\$23,729
	CEILING & LIGHT REPLACEMENTS (950)	\$747,170	\$300,000	\$1,047,170	\$932	\$124,892	\$921,346
	PARKING LOT LIGHTS (955)		\$100,000	\$100,000	\$15,441	\$2,225	\$82,334
	MAINTENANCE DEPART EQUIPMENT (900)	\$339,912	\$145,000	\$484,912	\$8,676		\$476,235
	DISTRICT WIDE PROJECTS (900)	\$2,500,284		\$2,500,284	\$96,239		\$2,404,044
	SUBTOTAL	\$10,241,660	\$3,884,027	\$14,125,687	\$2,042,280	\$594,379	\$11,489,027
	GRAND TOTAL	\$141,816,558	\$60,236,147	\$202,052,705	\$48,081,792	\$89,784,665	\$64,186,248