The slide features several decorative brushstrokes: orange strokes in the top-left and bottom-left corners, a green stroke in the top-right corner, and orange and green strokes in the bottom-right corner. The text is centered in a dark brown font.

SJCSD ESE Parent Advisory Council Meeting (EPAC)

Tuesday, May 5, 2026



Welcome

Tonight's meeting will introduce participants to the ESE points of contact for various departments within the school district, highlight several community resources, review what Extended School Year looks like in SJCSO, and share current and upcoming community events.

2025-2026 ESE Points of Contact



Senior Director: Jessica Richardson – (904) 547 6043
Director: Michelle Curtin – (904) 547 6045



Executive Secretaries

Darlene Delaney – (904) 547 6059
Telisha Taylor – (904) 547 6042

VE and Gifted

Coordinator: Lisa Brubaker – (904) 547 6057

VE Team

P. Specialist: Becky Jarriel – (904) 547 6056
P. Specialist: Kristen Logan – (904) 547 6055
P. Specialist: Lisa Henson – (904) 547 6054
Coach: Liz DiBella – (904) 547 6081
Coach: Heather Shreves - (904) 547 7519
Coach: Amber Veniard - (904) 547 7570

Gifted Team

P. Specialist: Sherri-Lee Heath – (904) 547 6058
Coach: Colleen Begley – (904) 547 6072

Special Programs

Behavior Team

P. Specialist: Tori Carnall – (904) 547 6065
P. Specialist: George Freeman – (904) 547 6066
Coach: Chris Tuccillo – (904) 547 6084

Access

Elem. P. Specialist (also supports behavior specialists and techs): Lisa Thacker - (904) 547 6064
Elem. P. Specialist: Deb Stubee – (904) 547 6063
Secondary P. Specialist: Kaley Presnell – (904) 547 6062
Secondary P. Specialist: Ann Diaz - (904) 547 6050
Coach: Erin Cozzi – (904) 547 6076

Compliance and LEA Support

P. Specialist: Kelly Pickett – (904) 547 6069
P. Specialist: Renee Downey – (904) 547 6048
P. Specialist: Traci Clark – (904) 547 6068
Coordinator: Lisa Brubaker – (904) 547 6057

School Psychologist

P. Specialist: Allison Smith (904) 547 6044

Life Work

Coordinator: Jennifer Argentina – (904) 547 3433

Early Childhood Services

Director: Brian McElhone – (904) 547 8963
P. Specialist: Amanda Devany – (904) 547 8966
(Curriculum, VPK, Head Start)
P. Specialist: Sandy Wallace – (904) 547 8962
(Intensive Support, Behavior)
P. Specialist: Teri Evans – (904) 547 8958
(ESE, Pre-K, Clinic Evaluations)
P. Specialist: Ashley Moore – (904) 547 3328
(Site Administrator, ECS at FCTC)
Coach: Vicki Holstein – (904) 547 8961

Support Services

Coordinator: Avery Greene – (904) 547 6061
(SLP, DHH, OT, PT, AT, H/H, VI)
P. Specialist: Holly Nover – (904) 547 6060
(SLP and AT)

2026-2027 Special Program Classrooms for Students with Disabilities & VPK

	Elementary	Middle	<u>K-8</u>	<u>High</u>	Alternative
Access Points	Crookshank ES , Cunningham Creek ES, Durbin Creek ES, Hartley ES, Hickory Creek ES, Julington Creek ES, Ocean Palms ES, Osceola ES, Otis Mason ES, Picolata Crossing ES, PVPV/Rawlings ES, R.B. Hunt ES, South Woods ES, Timberlin Creek ES, Wards Creek ES, The Webster School	Gamble Rogers MS Landrum MS Pacetti Bay MS Sebastian MS Switzerland Point MS	Patriot Oaks Academy Valley Ridge Academy Magnolia Oaks Academy	Creekside HS Pedro Menendez HS Ponte Vedra HS St. Augustine HS Tocoi Creek HS	The Evelyn Hamblen Center
Behavior	Ketterlinus ES South Woods ES The Webster School	Fruit Cove MS Gamble Rogers MS Murray MS	Liberty Pines Academy <i>*Elem Only</i> Lakeside Academy <i>*Elem Only</i> Trout Creek Academy <i>*Elem Only</i>	Bartram Trail HS Pedro Menendez HS St. Augustine HS	The Evelyn Hamblen Center
Pre-K	Crookshank ES, Cunningham Creek ES, Durbin Creek ES, ECS at FCTC, Hartley ES, R.B. Hunt ES, Hickory Creek ES, Julington Creek ES, Mason ES, Ocean Palms ES, Osceola ES, Palencia ES, Picolata Crossing ES, South Woods ES, Timberlin Creek ES, Wards Creek ES, The Webster School Therapeutic Learning Center				
VPK	Durbin Creek ES, Hickory Creek ES, R.B. Hunt ES, Julington Creek ES, Ocean Palms ES, Palencia ES, Picolata Crossing ES, Ponte Vedra Palm Valley ES, Wards Creek ES		Freedom Crossing Academy Valley Ridge Academy		
Transition Programs					ARC - Community Campus Creekside - Medically Fragile FCTC/Vicars - Life Work



New Issue

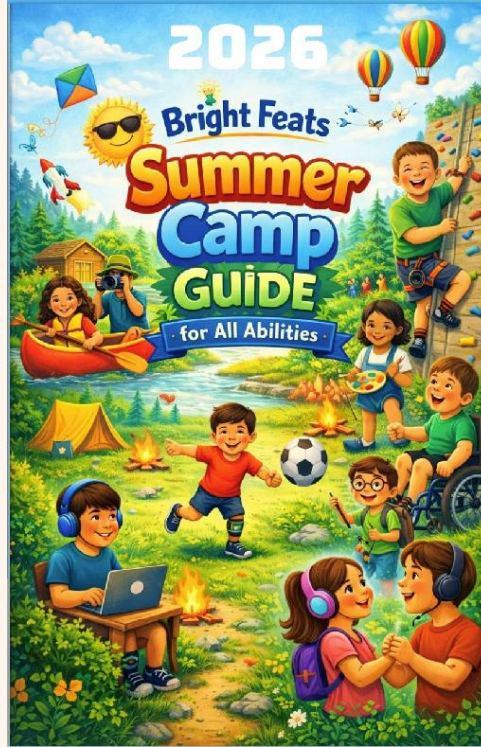
Coming Home

Bright Feats

Northeast Florida

Website: www.brightfeats.com

Facebook: www.facebook.com/BrightFeatsNortheastFL



<https://www.brightfeats.com/summer-camp>

Drowning is the #1 cause of death in autism. Children with ASD are 160 times more likely to experience drowning than neurotypical peers.

Prevention Strategies:

- Use barriers such as locks, alarms, fencing, and visual supports
- Register with community alert systems (St. Johns County: Project Lifesaver)

Plan Ahead:

- Create a safety plan for your child
- Identify nearby bodies of water, including pools
- Keep a current photo of your child (tip: take one daily or before outings to document clothing)

Emergency Action:

- Call 911 immediately, if your child goes missing - do not wait or hesitate

Water Safety:

- Avoid reliance on floatation devices that can create a false sense of security
- Begin survival swim lessons as early as possible, even in infancy
- Never allow children to swim unsupervised

Community Awareness:

- Inform neighbors, friends, and family that your child may wander and may be drawn to water

Social Stories:

- Wandering: https://nationalautismassociation.org/wp-content/uploads/2022/08/NAA_Social-Story.pdf
- Learn to Swim: <https://www.autismfl.org/drowning-prevention>



EPAC Summer Planning

Summer Goals:

District Leadership: Approval of Bylaws

Voting Member Appointments – Apply here:

<https://form.jotform.com/tlcarcsj/Voting-Member-App-EPAC>

Council Documents & Information: SJCS D Website
(Under ESE Dept - Parent Advisory Committee)

Join the contact list to stay in touch and receive meeting invites:

<https://form.jotform.com/sjcsdepac/join-the-sjcsd-epac-or-ese-parent-a>

2026-2027 Meeting Dates will be shared soon



The flyer is for the SJCS D Exceptional Student Education Parent Advisory Council (ESE PAC) for the 2026-2027 year. It features a central image of a diverse family (father, mother, and child) with the slogan "STRONGER TOGETHER FOR ALL STUDENTS!". The text includes "Your Voice. Their Future.", "ESE PARENT ADVISORY COUNCIL", and "QUARTERLY MEETINGS". A calendar icon indicates a "6:00 PM VIRTUAL MEETING" with a "JOIN US!" call to action. A paragraph describes the council's purpose: "Strengthen collaboration between families, schools, and community partners in support of students with exceptional needs. This council provides a platform for parents and guardians to share input, participate in discussions, and help guide decisions that impact ESE services across our district." Below this are four icons representing "ENGAGE" (part of meaningful conversations), "EMPOWER" (share ideas and help shape ESE services), "ENCOURAGE" (support students, families, and community), and "ENDEAVOR" (work together for a brighter future). At the bottom, there are QR codes for "JOIN THE MEETING NOW!" (Microsoft Teams) and "JOIN THE CONTACT LIST", along with contact information: email (SJCSDPAC@gmail.com) and website (https://www.sjohns.k12.fl.us/ese/advisory/). The footer contains the motto "TOGETHER, WE CAN MAKE A LASTING IMPACT ON THE LIVES OF OUR STUDENTS!" and "EVERY VOICE. EVERY CHILD. EVERY DAY."

Voting EPAC Members

Officers:
Chair,
Vice
Chair, &
Secretary

Parent/guardian representatives of students receiving or eligible for ESE services (majority of members)

Chair: Anna Machiz-Dillon

Vice Chair: _____

Secretary: _____

Up to 15 Voting
Members

Two ESE
teachers, at
least one who is
employed by
the District

1 _____

2 _____

One
District/Charter
transition
program
representative

Jennifer Argentina

One charter
school
representative
or parent

One
homeschool
school
representative
or parent

One private
school/micro
school
representative
or parent

One Center for
Autism and
Related
Disabilities
(CARD)
Representative:

Jeannie Potthast

One District ESE
administrative
representative



NEURODEVELOPMENTAL
PEDIATRICS



Center for Autism and Related Disabilities

- St. Johns County Satellite Clinic
- Parent Resources
- Safety Kits
- Upcoming Workshops



Make an Appointment!

SATELLITE CLINIC

Free Support Services

• CARD

UF/Jacksonville CARD (Center for Autism and Related Disabilities)

Works directly with families, educators, and the community to provide:

- Training and consultations
- Family support and guidance
- On-site observations and recommendations
- Public awareness and peer support groups

• FDLRS-MDC

Florida Diagnostic & Learning Resources System - Multidisciplinary Center)

FDLRS-MDC offers free diagnostic evaluations and support for students Services include:

- Full diagnostic evaluations
- Consultations for educational planning
- Parent guidance and training
- Observations and technical support

About Us

Serving families living in Baker, Clay, Duval, Flagler, Nassau, and St. Johns counties.

CARD: Free, individualized support to people of all ages with autism and related conditions (such as dual-sensory impairments or sensory issues paired with other disabilities).

FDLRS-MDC: Free diagnostic evaluations and support for students ages 3 to 22 who have not yet graduated and may be struggling due to complex medical, emotional, behavioral, or learning challenges.



CARD

St. Johns County Satellite Clinic

Register: <https://www.arcsj.org/tlc/satellite-clinic/>

SJC Friday Workshops:

- **Splish, Splash, & Stay Safe** May 15th 2-3:30pm
- **Keeping Skills Sunny all Summer: Avoiding Regression** June 26th 2-3:30pm
- **Travel Tips & Tricks: Existing Resources & More** July 24th 2-3:30pm

Register:

<https://form.jotform.com/tlcarcsj/card-clinic-supportgroup-form-926>



The Center for Autism and Related Disabilities, located at UF Health Neurodevelopmental Pediatrics – Dupont Station, provides support and assistance with the goal of optimizing the potential of individuals of all ages with autism spectrum disorders, dual sensory impairments and related disabilities. Services are provided at no cost to individuals, their families and the professionals who work with them.

Referrals are accepted from parents, legal guardians, medical professionals, schools and community agencies. Consent to obtain and review records will be necessary.

CARD serves Baker, Clay, Duval, Flagler, Nassau and St. Johns counties.



CARD Services

SERVICES FOR FAMILIES

- ▶ Consultations with individual or caregivers on how to best work with an individual with different abilities
- ▶ Referrals to connect with other support resources available in the community
- ▶ Support groups, family counseling and workshops for siblings

SERVICES FOR SCHOOLS

- ▶ Consultation with educational professionals
- ▶ Technical assistance for functional behavioral assessment and behavior support plans
- ▶ Training events and workshops for education professionals (continuing education credits offered)
- ▶ Teaching partnerships with the Florida Department of Education and Partnership for Effective Programs for Students with Autism, or PEPSA

SERVICES FOR THE COMMUNITY

- ▶ Awareness events about autism and related disabilities for local groups or agencies upon request
- ▶ Training events on topics about autism and related disabilities
- ▶ Annual statewide CARD conference

HOW DO I ACCESS CARD SERVICES?

Call us at 904.633.0760. After a brief 10- to 15-minute conversation, you will be invited to attend one of our monthly CARD 101 training sessions. If your child is having difficulties at school, we ask that you contact the school, teacher or principal, tell them about CARD, and ask them to call us after you have registered. In order to foster a relationship, it is our policy to enter a classroom or other facility only if we are invited.

HOW LONG WILL CARD STAY INVOLVED?

We will remain involved as long as it takes for the family to feel they are able to cope with the child's condition without our support. We ask that the family work with us and continue to do their part in supporting the child.

CAN I HAVE MY CHILD DIAGNOSED AT CARD?

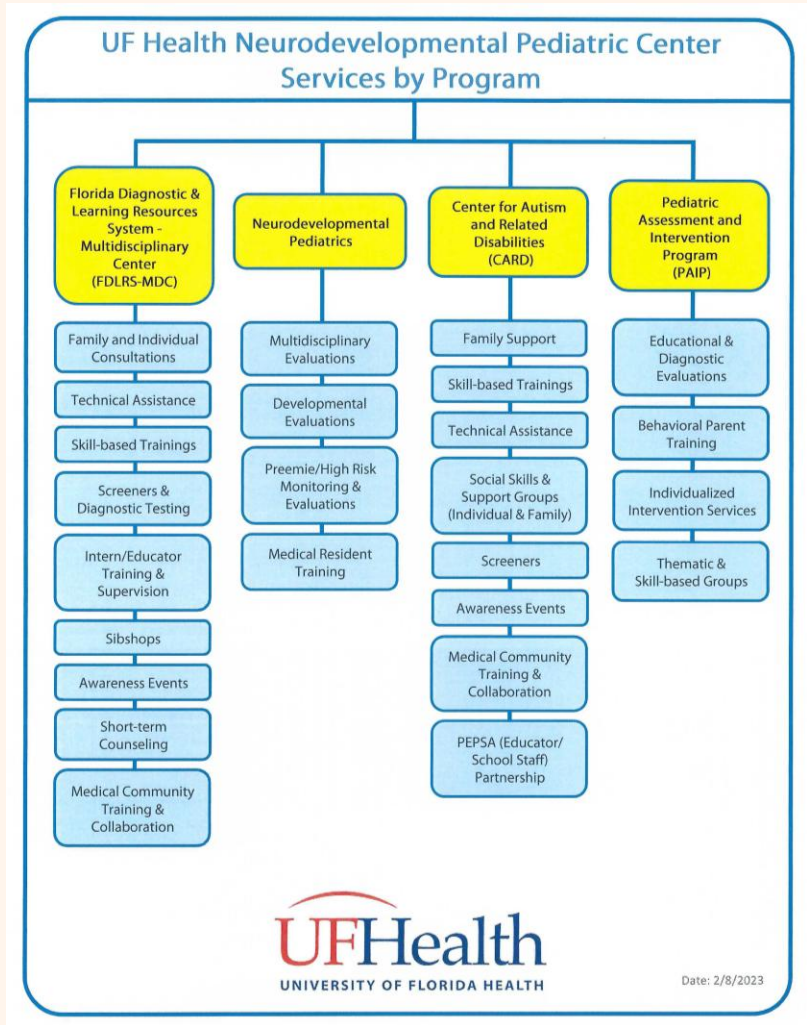
CARD staff are not able to perform diagnostic evaluations, but we will help families find a qualified professional.

Pre-register for Card Services:

<https://pediatrics.med.jax.ufl.edu/patient-care/center-for-autism-and-related-disabilities/>

Sign-up for the CARD Jacksonville Email Newsletter:

https://forms.office.com/pages/responsepage.aspx?id=D8x6Ko0Q8Uyx_0D6F7gwziaTE3-aoVtJp_Hbdj-HQtJUN0s4NE5XWIZTSjI0MIMzQUVPWEFaS0FPNS4u&origin=QRCode&route=shorturl





Upcoming Workshop:
Unlocking Access: Using Assistive Technology, Visual Supports, and Adapted Books to Support Diverse Learners

Jessica Callaghan, M.Ed.

May 29, 2026 9:00 am – 4:00 pm Check-in begins at 8:00 am

Registration Deadline: May 18th, 2026

Location: Neurodevelopmental Pediatrics
6271 St. Augustine Road, Ste.1 Jacksonville, FL 32217
For more information contact:
Amy Lane: Amy.lane@jax.ufl.edu or 904.633.4338





Extended School Year



What is ESY?

Extended School Year (ESY) services are supports provided beyond the regular school year when needed.

- Helps students maintain important skills
- Ensures continued access to their education
- Provided at no cost to families
- Determined by the IEP team each year

Key Message:

ESY is not summer school; it is individualized support based on student need.

Why Would a Student Need ESY?

The IEP team looks at data to determine if ESY is needed.

A student may qualify if data shows:

- **Regression & Recoupment:**
Skills may be lost over breaks and take time to regain
- **Critical or Emerging Skills:**
The student is learning an essential skill that could be lost
- **Nature/Severity of Disability:**
Ongoing support is needed to maintain access to learning
- **Extenuating Circumstances:**
Health or other factors impacting progress

Key Message:

Decisions are based on individual student data, not disability label or program.

What Does ESY Look Like?

ESY services are individualized and focused on maintenance, not new learning.

Examples may include:

- Instruction a few days per week
- Related services (like OT, PT, speech)
- Consultation or support for families
- Practice activities or structured supports

Key Message:

ESY is designed to maintain critical skills, not to introduce new learning or provide enrichment.

What ESY is Not

- Not summer school
- Not childcare
- Not automatic every year
- Not based on disability category or placement
- Not intended to “catch up” or accelerate learning

Key Message:

ESY is a targeted support, only when data shows it is needed.

Understanding ESY Decisions

How ESY Decisions Are Made:

- ESY is determined during the IEP meeting
- The team reviews student progress data, including before and after school breaks
- Decisions are made annually for each student
- If more information is needed, the team may reconvene to review additional data

When ESY Is Not Recommended:

- The decision is based on your child's data
- Your child's progress will continue to be monitored throughout the year
- ESY will be considered annually

Key Message:

ESY is an annual, data-based decision made by the IEP team.



Upcoming Event and Summer Resources

- Summer Pre-Employment Trainings and Services
- Family Café'

Summer Pre-Employment Training Services (PRE-ETS)



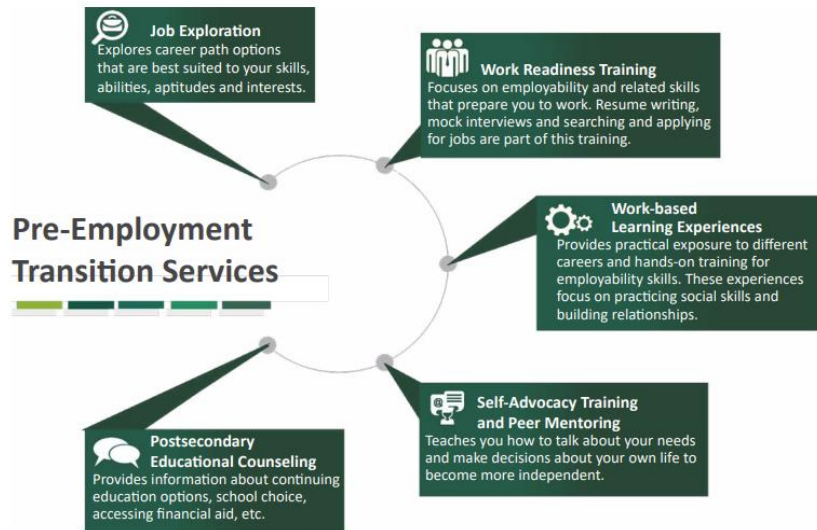
Vocational Rehabilitation
8E: Putnam and St. Johns
25 Deltona Blvd., Suite 3
St. Augustine 32086-4204
Phone: 904-797-6250
Fax: 904-797-7666
Napoleon Spencer, Supervisor

Who Can Participate in Pre-Employment Transition Services?

Students with disabilities ages 14-21 who are currently enrolled in school.

What are the Pre-Employment Transition Services?

Pre-ETS include job exploration, workplace-readiness training, work-based learning experiences, training on self-advocacy (e.g., youth peer mentoring) and postsecondary educational counseling.



How Does a Student Access Pre-Employment Transition Services?

Students can contact a VR office or request a referral from their school.



The Family Café



The 28th Annual Family Café
June 12-14, 2026
Orlando, FL

The Annual Family Cafe – The Family Cafe





Looking forward to EPAC 26-27

Quarterly Meetings

Format

Parent Survey



Thanks!

Do you have any questions?

youremail@freepik.com

+91 620 421 838

yourwebsite.com



CREDITS: This presentation template was created by [Slidesgo](#), including icons by [Flaticon](#), and infographics & images by [Freepik](#)

Please keep this slide for attribution