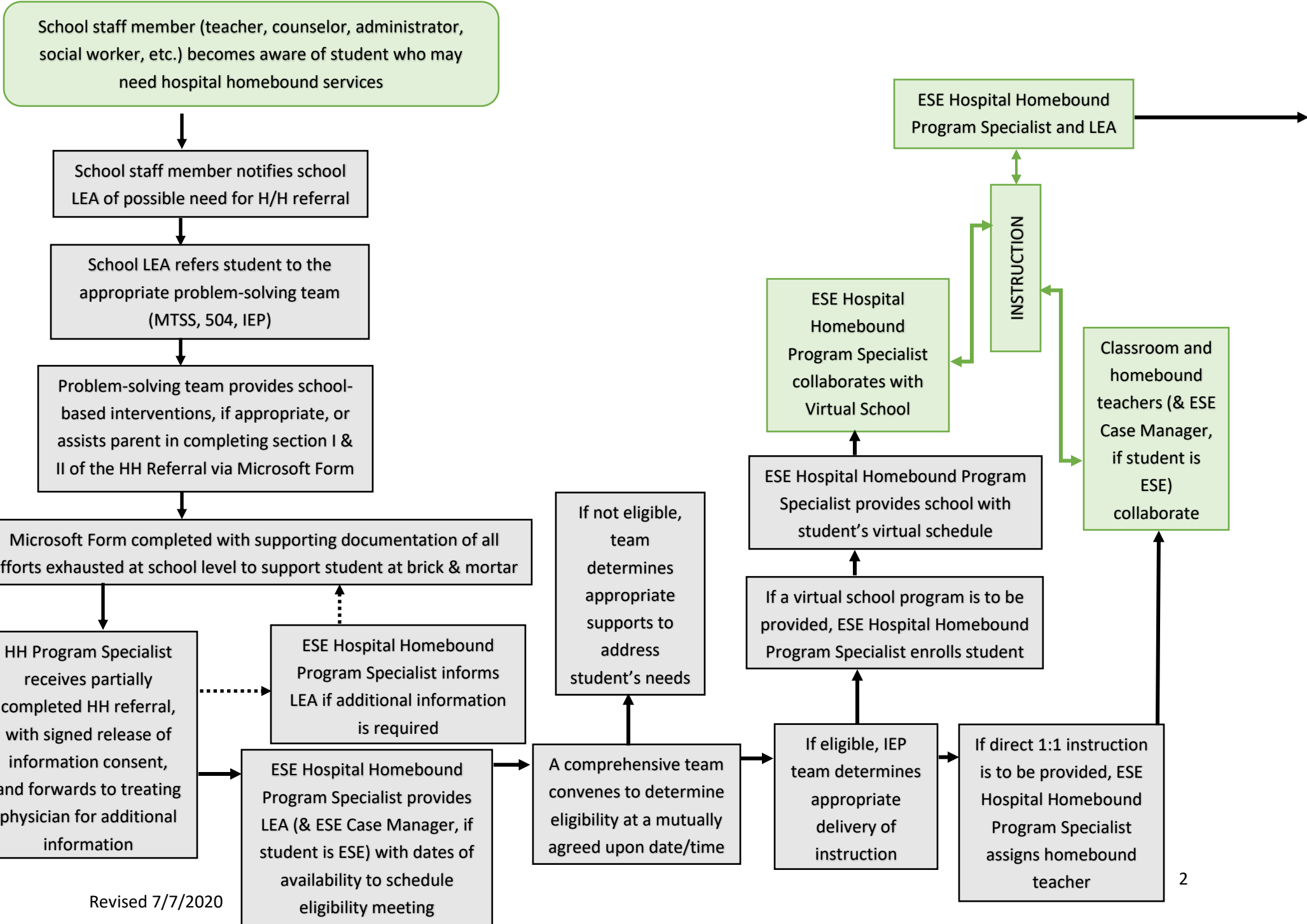


Hospital Homebound Flowchart and Step-by-Step Instructions

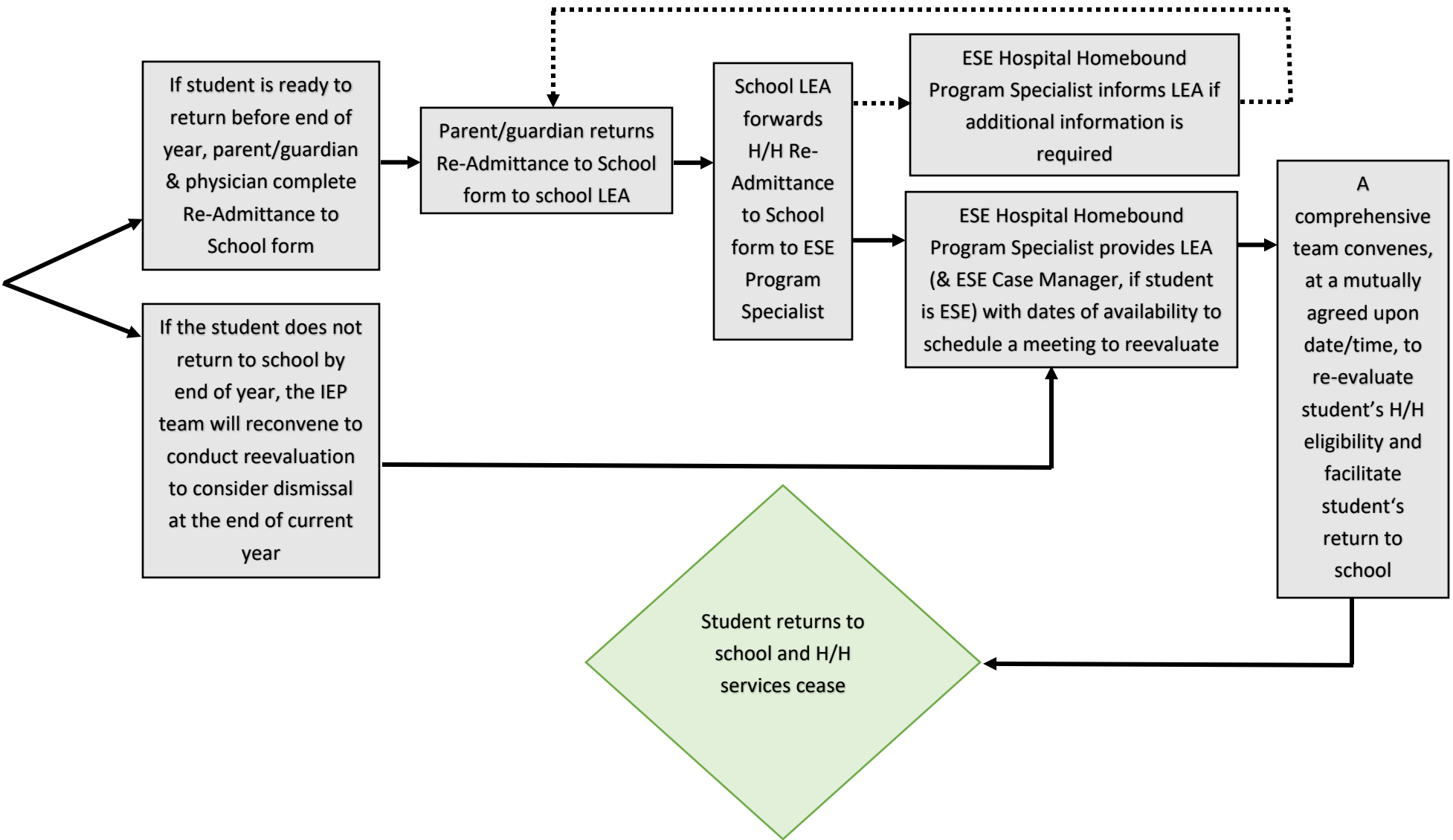
**St. Johns County School District
Exceptional Student Education**

**Lisa Bell, ESE Director
Tina Kennon, ESE Assistant Director
Avery Greene, ESE Program Specialist**

Hospital Homebound Prior Consideration/Referral Flowchart



Hospital Homebound Prior Consideration/Referral Flowchart Continued



Hospital Homebound Prior Consideration/Referral Step-by-Step Instructions

1. School is alerted that a student has had a recent medical diagnosis that may confine the student to home/hospital.
2. If the case involves a medical diagnosis/implications related to truancy, report(s) of bullying, behavior/academic concerns, implementation of accommodations/services, service provider concerns, concerns with other students, or issues able to be addressed at the school level, refer the student to the appropriate problem-solving team to address the issues through administrative action or academic/behavioral evidence-based interventions.
 - a. MTSS school-based problem-solving team for general education students.
 - b. 504 team for students who are already 504 eligible.
 - c. IEP team for students who are already ESE eligible.
3. After review of the case and supporting documentation, the problem-solving team can continue school-based interventions, if appropriate, or move forward with Hospital Homebound referral and complete sections I and II of the Hospital Homebound Referral, located on Inside SJCS D.
4. After completing sections I and II of the Hospital Homebound Referral, enter the student's information on the Hospital Homebound Microsoft Form (link available on Inside SJCS D) and attach the partially completed Hospital Homebound Referral.
 - a. **The partially completed Hospital Homebound Referral, with signed release of information consent, will be sent by the Hospital Homebound office directly to the treating physician's office.**
 - b. Upon return of Hospital Homebound Referral to the Hospital Homebound office, the LEA will schedule hospital homebound eligibility meeting, ensuring all appropriate team members are invited.