

# Town Hall Meeting

St. Johns County School District

---

Elementary "M"

Pacetti Bay Middle School Auditorium

September 12, 2016 6:00 p.m.

# Five Year Enrollment History

---

Five Year Enrollment History		
School Year	September Enrollment	Growth %
2011-2012	31,534	
2012-2013	32,541	3.19%
2013-2014	33,596	3.24%
2014-2015	35,154	4.60%
2015-2016	36,529	3.90%
2016-2017	38,488	5.36%

# Design and Decision Making Process

---

## General Powers of District School Boards

(FS 1001.41)

- Assign Students to schools.

# Design and Decision Making Process

---

- Examine Student Enrollments
  - By Geocodes (Geographic Units of Analysis) which comprise Attendance zones
  - New & Current developments
  - School's historical data

## SJCSD Rezoning Parameters (School Board Rule 5.03)

---

- The plan creates attendance zones that reflect the diversity of the District to the extent practical and consistent with Constitutional requirements.
- Maximum utilization of school facilities. Maximum utilization refers to distributing students among the existing capacity as evenly as possible.
- School size commitments as recommended by school board to the extent practical.
- The plan includes target enrollments that allow for growth and anticipated changing demographics.

## SJCSD Rezoning Parameters (School Board Rule 5.03)

---

- The plan keeps neighborhood units in the same attendance zone to the extent practical.
- The plan assigns students to the closest school to the extent practical.
- The plan does not place a transportation burden on any identifiable diversity subgroup (socioeconomic, race/ethnicity, ESOL, or disability).  
Demographic/Socioeconomic balance.
- Maximize Transportation efficiency costs.
- Minimize the disruption to students and families related to attendance zone changes to the extent practical.

# Attendance Zoning Goals

---

- Create Attendance Zone for Elementary M
  - 871 Student Stations
  - 18.5 Acres
- Relieve Overcrowding
- Plan with additional growth in mind
- Obtain community input
- Ensure quality education for our children

# St. Johns County School District

---

## Student Population Overview



# Situation

---

- Elementary M will open for the 2017-2018 School Year.
- Mill Creek Elementary currently has 1123 K-5 students and a permanent capacity of 963.
- Wards Creek Elementary School currently has 855 K-5 students and a permanent capacity of 760.
- Palencia Elementary School currently has 793 K-5 students and a permanent capacity of 731.
- Ketterlinus Elementary School currently has 457 K-5 students and a permanent capacity of 485.

# Situation

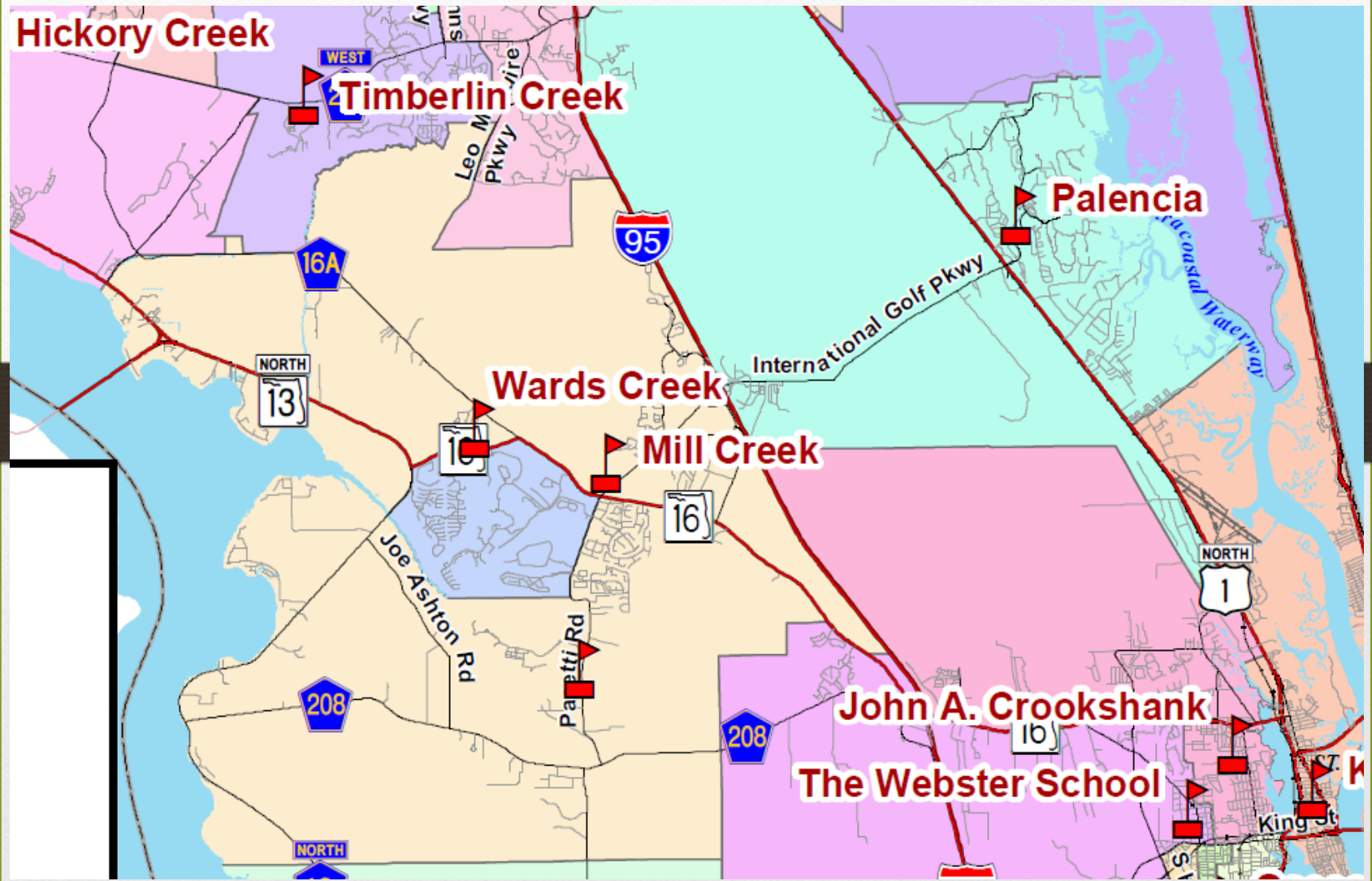
---

- Mill Creek and Palencia Elementary Schools contain large amounts of development pressure within their attendance zones.
- Mill Creek Elementary and The Webster School zones currently contains students not zoned to the closest school.

# Zoning Proposal

---

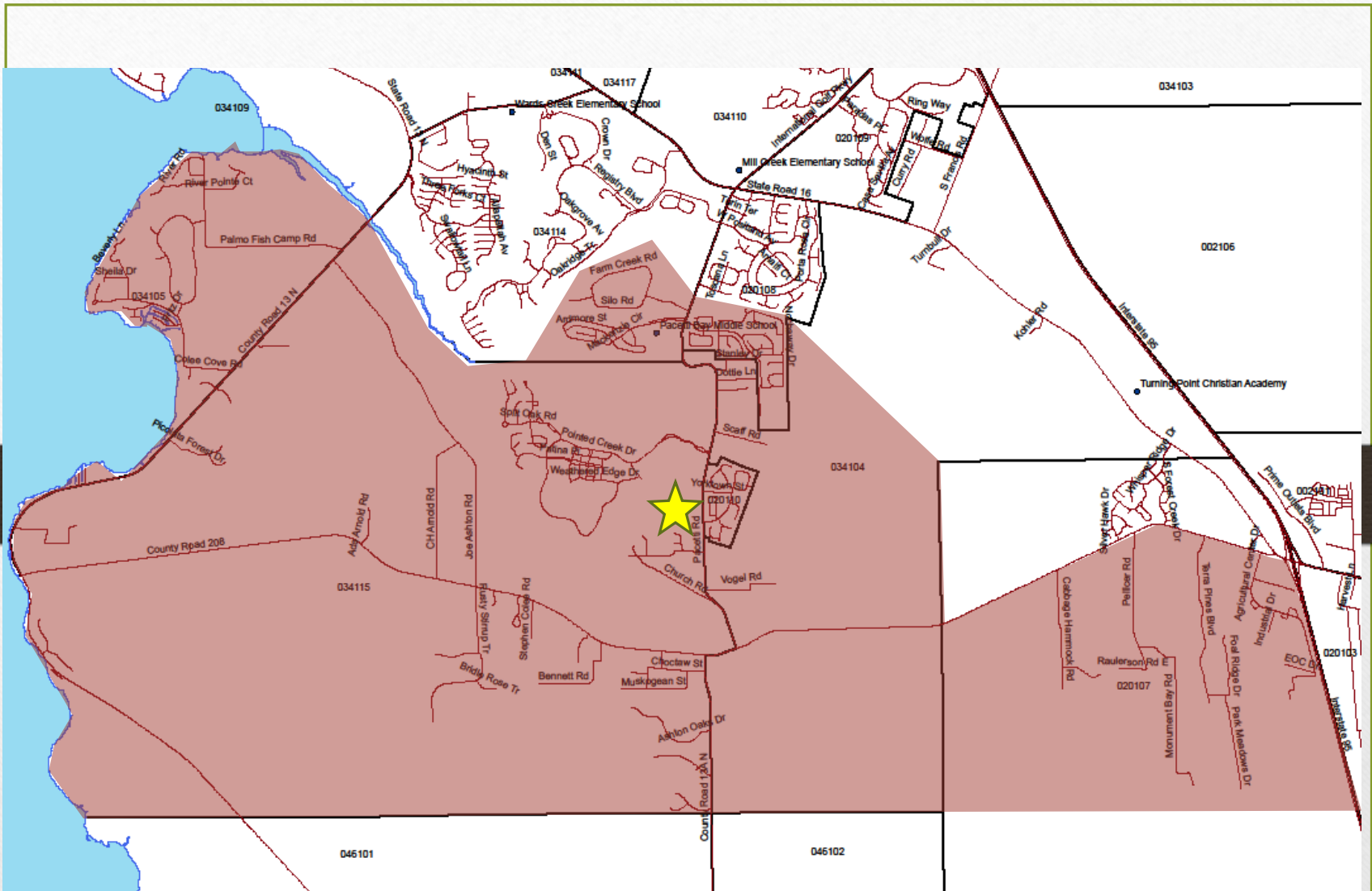
# Current Elementary Attendance Zones



# Elementary M

---

- Proposed Zone includes
  - Pacetti Road from Samara Lakes, the Meadows, Silo Road, Farm Creek Road & Dairy Barn Road to just South of Oscar Ashton Road.
  - CR 208
  - Palmo Fish Camp Road
  - Joe Ashton Road
  - Trailmark
  - Gran Lake



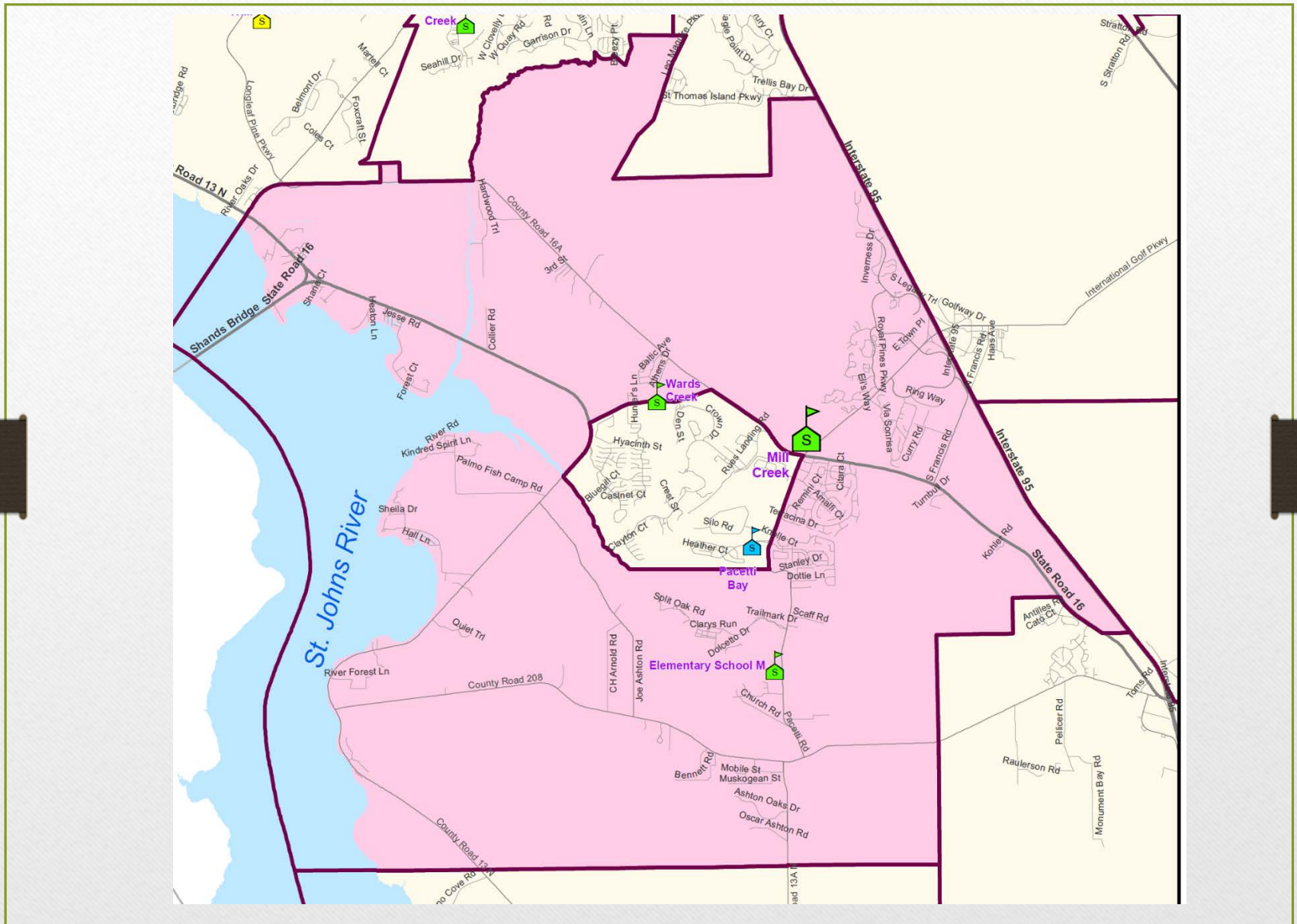
# Proposed Elementary M

# Elementary M

---

- Proposed Zone Current Students: 630 students
- Proposed Zone with 1 year growth: 725 students (15%)
- Proposed Zone with 3 years growth: 1016 students (61%)

# Mill Creek Elementary Current Zone

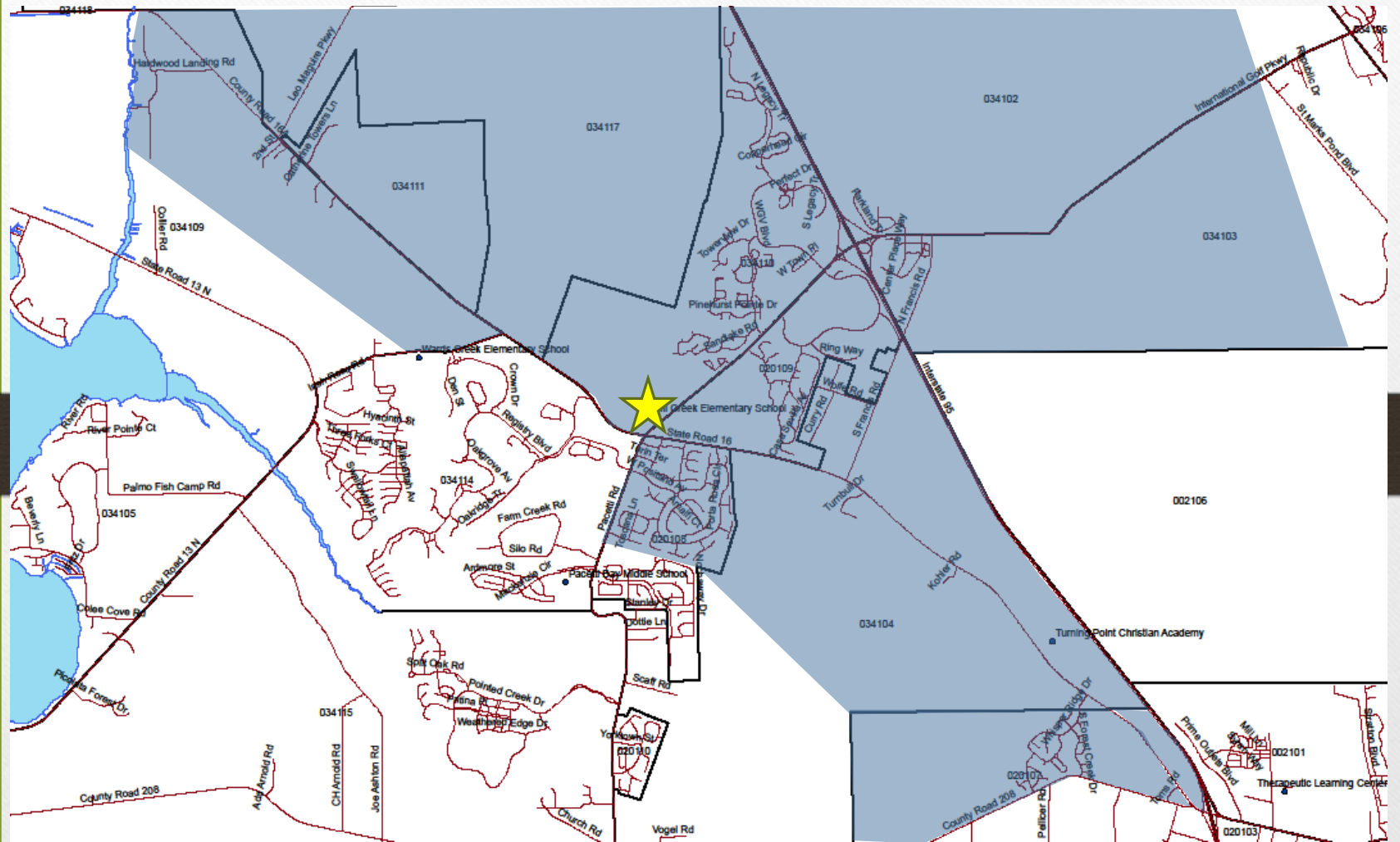




# Mill Creek Elementary

---

- Proposed Zone includes
  - International Golf Parkway(IGP) to include World Golf Village, Sevilla, Markland, Bannan Lakes, S. Francis Road, N. Francis Road
  - Murabella
  - CR 16A (including Arbor Mill)
  - SR 16 on the northeast side from CR 16A to IGP; on both sides from IGP to the Outlet Mall to include Whisper Ridge, Windward Ranch, Grey Hawk Estates
  - SilverLeaf Plantation



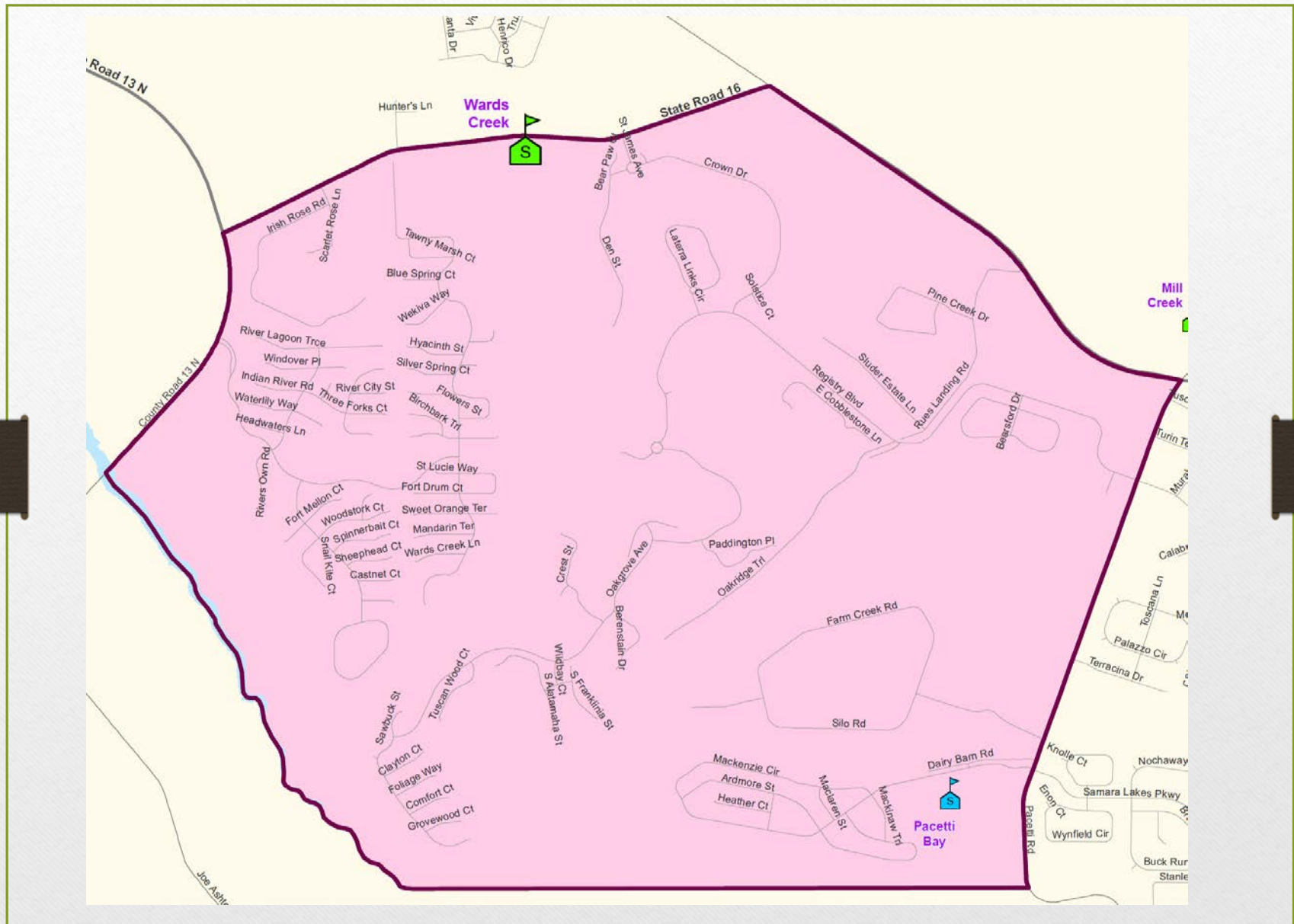
# Proposed Mill Creek Elementary

# Mill Creek Elementary

---

- Proposed Zone Current Students: 751 students
- Proposed Zone with 1 year growth: 863 students (15%)
- Proposed Zone with 3 years growth: 1169 students (56%)

# Wards Creek Elementary Current Zone



# Wards Creek Elementary

---

- Proposed Zone includes
  - King & the Bear
  - Heritage Landing
  - Ashley Oaks
  - SR 16 on the southwest side from IGP to CR 16A (to include Rues Landing Road) and on both sides between Wards Creek Elementary and SR 13
  - Orangedale (along SR 13)



# Wards Creek Elementary

---

- Proposed Zone Current Students: 790 students
- Proposed Zone with 1 year growth: 821 students (4%)
- Proposed Zone with 3 years growth: 888 students (12%)

# Ketterlinus Elementary Current Zone





# Ketterlinus Elementary

---

- Proposed Zone includes reassignment to include
  - Avenues A, B, C and D
  - 1<sup>st</sup> - 5<sup>th</sup> Streets
  - Porter Road
  - Sartillo Road
  - Big Oak Road



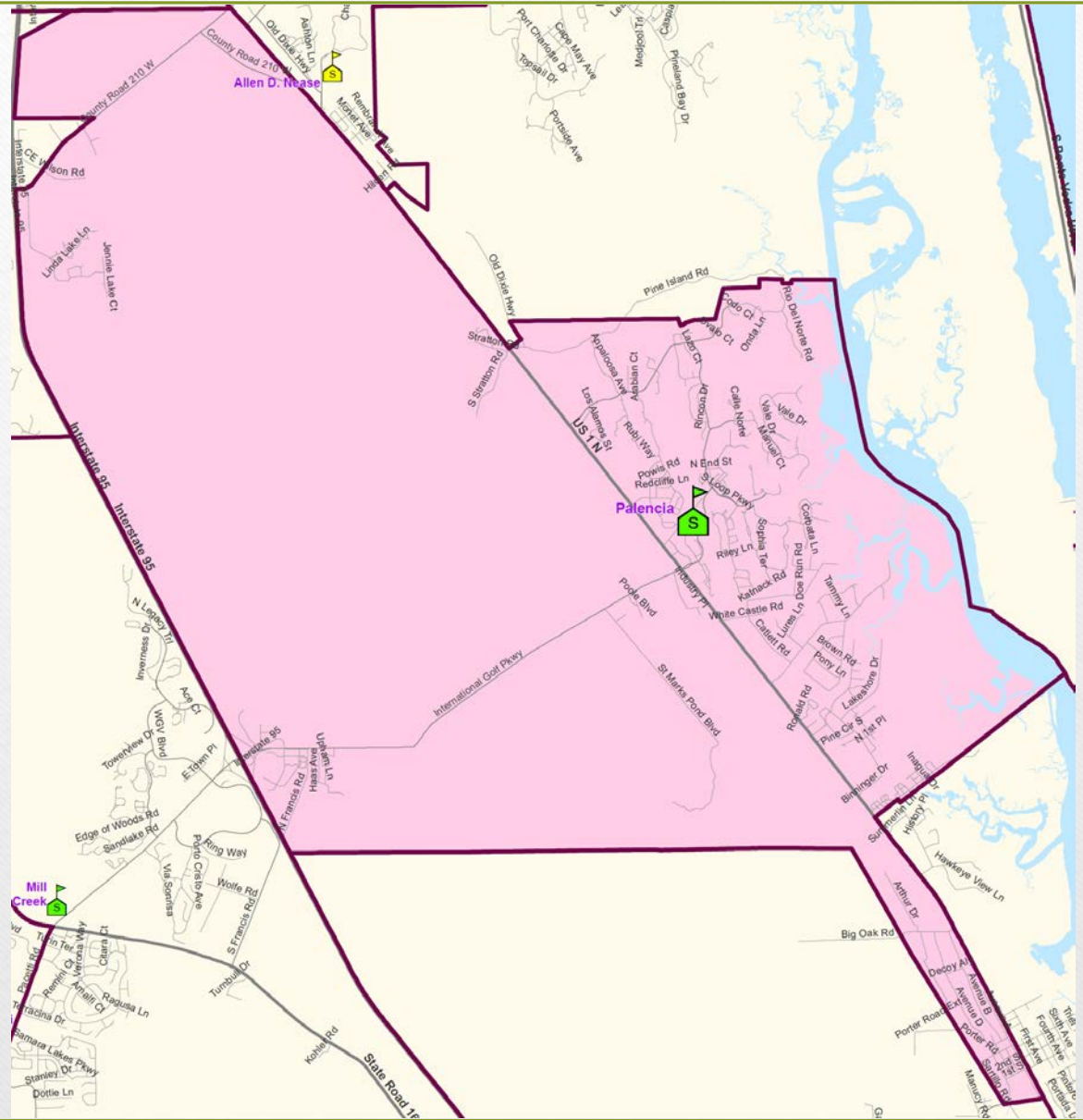
# Ketterlinus Elementary

---

- Proposed Zone Current Students: 379 students
  - Additionally 78 Hardship Out of Zone Waivers
- Proposed Zone with 1 year growth: 500 students\*
- Proposed Zone with 3 years growth: 500 students\*

\*To be controlled by limiting Hardship Out of Zone Waivers.

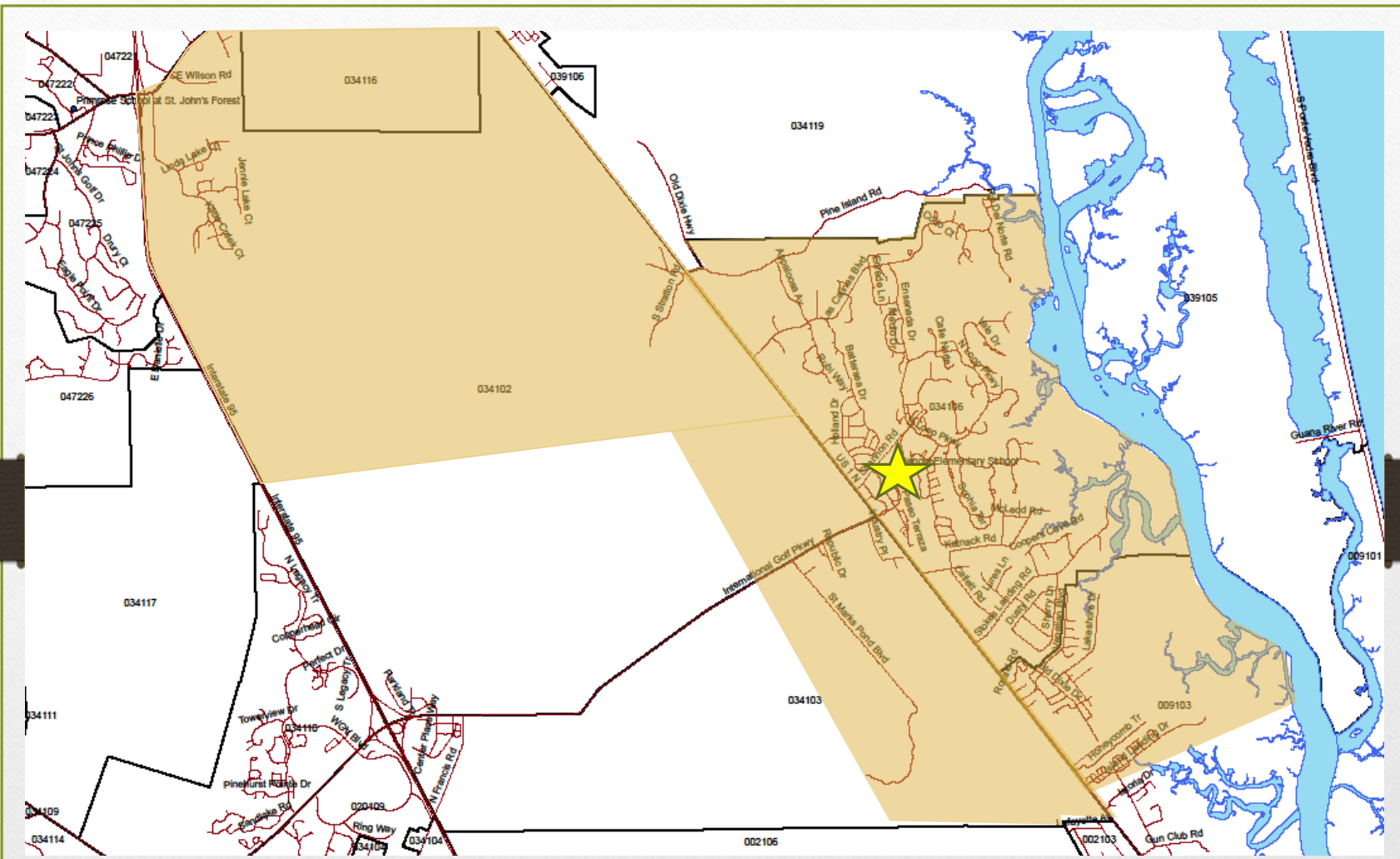
# Palencia Elementary Current Zone



# Palencia Elementary

---

- Proposed Zone includes the reassignment of
  - International Golf Parkway
  - Avenues A, B, C and D
  - 1<sup>st</sup> - 5<sup>th</sup> Streets
  - Porter Road
  - Sartillo Road
  - Big Oak Road



Proposed Palencia Elementary

# Palencia Elementary

---

- Proposed Zone Current Students: 774 students
- Proposed Zone with 1 year growth: 849 students (10%)
- Proposed Zone with 3 years growth: 1051 students (36%)

# Grandfathering Provisions

---

- Any rising 5<sup>th</sup> grade student for the 2017-2018 SY (current 4<sup>th</sup> grade student) may remain at their previous school, if they provide their own transportation.



# Future Decisions

---

- The Principal for Elementary M will be named by February and begin in March.
- After selection, the new Principal will begin communications regarding:
  - School Name
  - School Colors and Mascot
  - PTO
  - Curriculum/ESE Services
  - Technology
- In March, Human Resources will provide communication to teachers and staff concerning the hiring process.

# Next Steps...

---

Public input: Please visit St. Johns County School District's website:

- **Download the PowerPoint and initial attendance zone proposal** to view this evening.
- **Email** comments and suggestions to our design team, School Board Members and Superintendent.

[www.stjohns.k12.fl.us](http://www.stjohns.k12.fl.us)

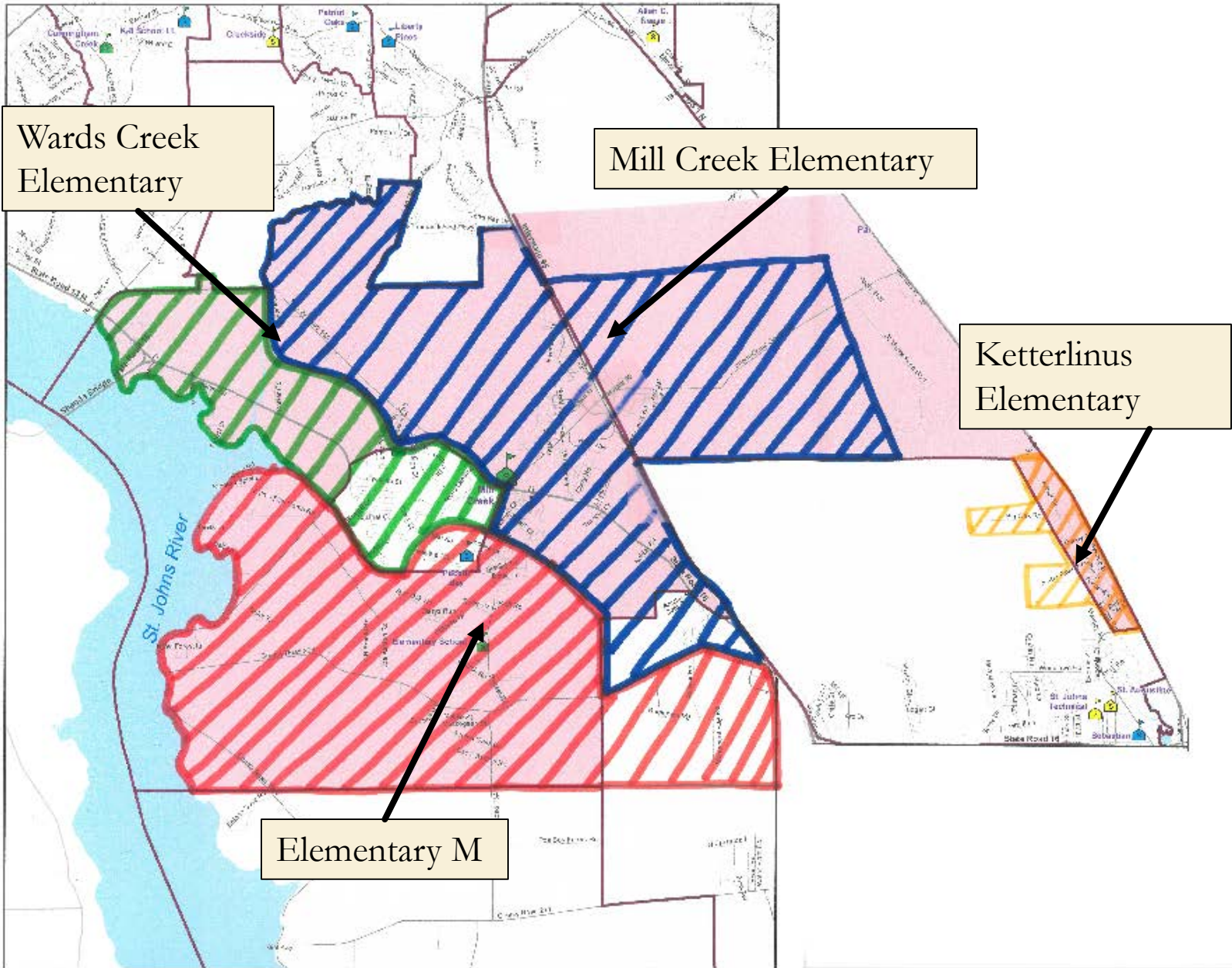
# Next Steps...

---

## Options for in-person public input:

- September 13<sup>th</sup> School Board Meeting
- September 27<sup>th</sup>: School Board Workshop
- October 4<sup>th</sup>: Discussion and Approval of Advertisement for Attendance Zone Changes
- October 11<sup>th</sup> School Board Meeting
- October 25<sup>th</sup> School Board Workshop
- November 1<sup>st</sup> School Board Workshop
- November 8<sup>th</sup> Discussion and Approval of Attendance Zone Changes

# Public Comment



Wards Creek  
Elementary

Mill Creek Elementary

Ketterlinus  
Elementary

Elementary M