

## Proposed Attendance Zone Changes for the 2015-2016 School Year

Attendance zone changes are currently being proposed for 2015-2016 for the developments of **Ashford Mills/Shearwater** and **Encanta/Windward Ranch**. No other changes are proposed at this time. All other zoning will remain as it exists currently for the 2015-2016 School Year.

### Ashford Mills/Shearwater

General Location: CR 210 West and Shearwater Parkway



- 2,633 Dwelling Units Approved
  - 1,919 Single Family
  - 714 Multi-family
- 1,289.3 Projected Students Projected
  - 580.2 Elementary
  - 309.4 Middle
  - 399.7 High

- School Mitigation includes donation of a K-8 School Site and a monetary mitigation payment per unit to construct the needed student stations.
- Current Zoning:
  - Mill Creek Elementary School
  - Pacetti Bay Middle School
  - Allen D. Nease High School
- **Proposed Zoning:**
  - **Timberlin Creek Elementary School**
  - **Switzerland Point Middle School**
  - **Bartram Trail High School**

Projected Students for 2015-2016: 50 Single Family Dwelling Units

- 16 Elementary
- 8 Middle
- 11 High

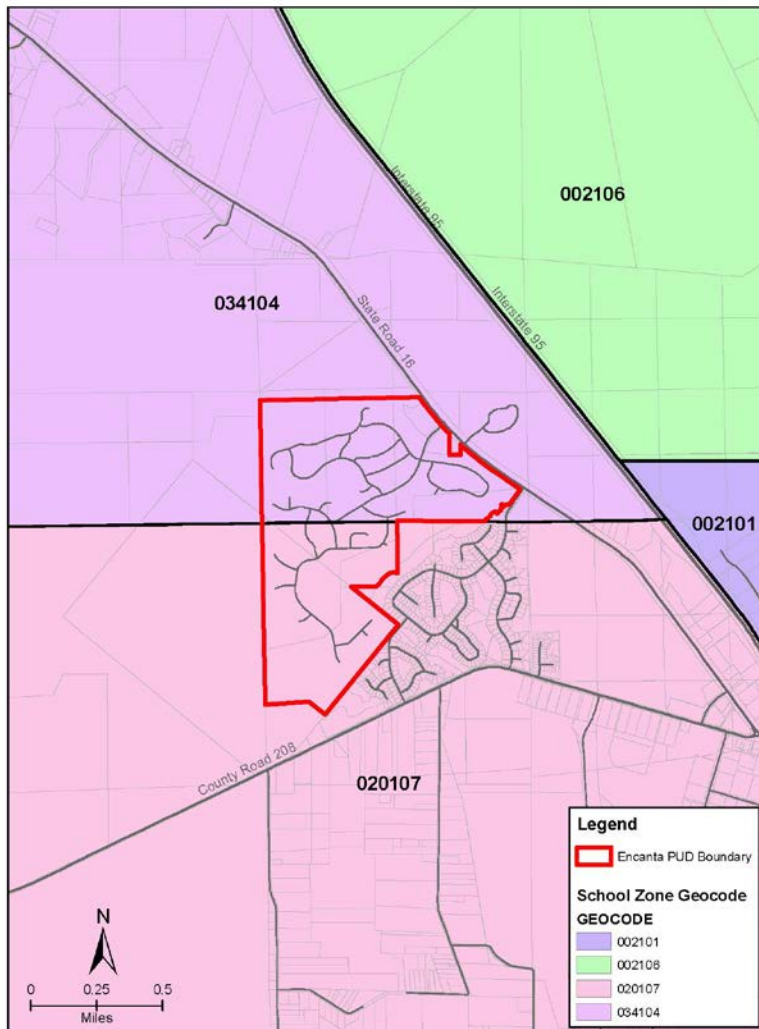
Installation of Infrastructure is currently on-going. No homes are under construction at this time.

Current and Projected Enrollment for the Schools effected by the Attendance Zoning

	Current Enrollment	Projected Enrollment for 2015-2016
• Mill Creek Elementary School	1041	1082
• Timberlin Creek Elementary School	928	943
• Pacetti Bay Middle School	1110	1240
• Switzerland Point Middle School	1280	1215
• Allen D. Nease High School	1849	1962
• Bartram Trail High School	1972	2028

## Encanta/Windward Ranch

General Location: SR 16, West of I-95



- 580 SF du
- 275.6 Projected Students
  - 124 Elementary
  - 66.2 Middle
  - 85.4 High

Installation of Infrastructure currently on-going. No homes under construction at this time.

- **Current Zoning:**
  - Mill Creek Elementary School /Webster Elementary School
  - Pacetti Bay Middle School /R. J. Murray Middle School
  - Allen D. Nease High School /St. Augustine High School
- **Proposed Zoning:**
  - **Webster Elementary School**
  - **R. J. Murray Middle School**
  - **St. Augustine High School**

Current and Projected Enrollment for the Schools effected by the Attendance Zoning

	Current Enrollment	Projected Enrollment for 2015-2016
• Mill Creek Elementary School	1041	1082
• Webster Elementary School	568	615
• Pacetti Bay Middle School	1110	1240
• R.J. Murray Middle School	738	757
• Allen D. Nease High School	1849	1962
• St. Augustine High School	1684	1684

**Schedule for Attendance Zoning Changes**

- **March 24<sup>th</sup> School Board Workshop: Discussion with School Board**
- **April 7<sup>th</sup> Special School Board Meeting: Request to Approve Advertisement**
- **May 12<sup>th</sup> School Board Meeting: Request to Approve Attendance Zoning Changes**