



Agenda Item Details

Meeting	Sep 19, 2017 - REGULAR SCHOOL BOARD MEETING RESCHEDULED FROM SEPTEMBER 12, 2017
Category	S. Operational Services - Consent
Subject	1. Request for Acceptance of the Capital Projects Status Report August 2017
Access	Public
Type	Action (Consent)
Recommended Action	Acceptance of the Capital Projects Status Report August 2017
Goals	STRATEGY 2 - Operations - Continue to design and construct schools that accommodate growth while maintaining high quality programming with an intentional student-focused environment

Public Content

Background Information:

The facilities Department prepares the Capital Projects Status Report to provide summary information and updates to the Board on the status of capital projects. The report is divided into six sections: 1) Executive Summary; 2) Projects in the Planning Stage; 3) Major Projects Under Construction; 4) Minor Capital Improvements projects; 5) Projects in Close-out/Final Stage; and 6) Financial Information.

Educational Impact:

Monthly Report.

Strategic Plan Impact:

Monthly Report.

Fiscal Impact:

Projects as identified in the District's Five-Year Building, Existing Conditions Report and the District's Capital Outlay Budget.

Recommendation:

Acceptance of the Capital Projects Status Report August 2017.

Action Required:

Approval of the Superintendent's recommendation.

Drafted, reviewed and submitted by:

Paul Rose, Executive Director for Facilities & Operations
Cathy Mittelstadt, Deputy Superintendent for Operations

Sincerely,
Tim Forson

Superintendent of Schools

Capital Projects Status Report September 2017.pdf (1,933 KB)

Administrative Content

Our adopted rules of Parliamentary Procedure, Robert's Rules, provide for a consent agenda listing several items for approval of the Board by a single motion. Most of the items listed under the consent agenda have gone through Board subcommittee review and recommendation. Documentation concerning these items has been provided to all Board members and the public in advance to assure an extensive and thorough review. Items may be removed from the consent agenda at the request of any board member.

Workflow

Workflow Aug 28, 2017 7:02 AM :: Submitted by Cara Pacetti. Routed to Cara Pacetti for approval.
 Aug 28, 2017 7:04 AM :: Approved by Cara Pacetti. Routed to Paul Rose for approval.
 Aug 28, 2017 7:25 AM :: Approved by Paul Rose. Routed to Vicki Davenport for approval.
 Aug 28, 2017 10:20 AM :: Approved by Vicki Davenport. Routed to Cathy Mittelstadt for approval.
 Aug 30, 2017 9:57 AM :: Approved by Cathy Mittelstadt. Routed to Vicki Moody for approval.
 Aug 30, 2017 11:45 AM :: Approved by Vicki Moody. Routed to Tim Forson for approval.
 Sep 1, 2017 8:47 AM :: Final approval by Tim Forson

Last Modified by Tim Forson on September 1, 2017

ST. JOHNS COUNTY SCHOOL
DISTRICT

CAPITAL PROJECTS
STATUS REPORT

AUGUST 2017

Section 1.

CAPITAL PROJECTS STATUS REPORT – AUGUST 2017

Executive Summary

The Facilities Department staff is implementing the current capital projects identified in the Educational Plant Survey and the Five-Year Facilities Work Plan. Significant projects include:

- **Nease HS Expansion, Renovations & Site Improvements:** Through the joint coordination of the design team (Pond and Company) and the CM firm (the Barton Malow Company) the comprehensive design work for this multi-phase project is nearing completion. The kitchen/dining expansion phase has been completed/constructed and the 510-student station classroom expansion/addition facility is substantially complete and now being utilized by students and school staff. Renovation of existing campus facilities and additional site work to follow.
- **Picolata Crossing Elementary School (ES “M”):** Following the award of a contract to STG Contracting Group, Inc. at the June 15, 2016 School Board meeting, construction of Picolata Crossing Elementary School began immediately. School facility is substantially complete. A successful school opening has been achieved.
- **K-8 School “KK”:** After awarding a contract to Charles Perry Partners, Inc. at the August 9, 2016 School Board meeting, work to clear the site began immediately for K-8 School “KK” located in the Nocatee community. Structural steel installations and lightweight concrete are progressing. Modified bitumen roofing and interior construction are progressing. Project is scheduled for a 2018 – 2019 school year opening.
- **K-8 School “LL”:** Work at the K-8 School “LL” site in the Aberdeen community is progressing after the construction contract was awarded to AFL Construction, Inc. at the September 13, 2016 School Board meeting. Structural steel installations and lightweight concrete roofing are progressing. Project is scheduled for a 2018 – 2019 school year opening.

Additional information for the above projects can be found in Sections 2 and 3.

Other projects identified in the Capital Outlay Budget are being implemented, executed and completed including: roof repairs and replacements; elementary and middle school security improvements; media center renovations; science classroom upgrades; miscellaneous school site improvements; security camera system upgrades; building/energy management system upgrades; and, various other ongoing maintenance projects.

The Capital Projects Status report is divided into six sections:

1. Executive Summary
2. Projects in the Planning Stage
3. Major Projects Under Construction
4. Minor Capital Improvement Projects
5. Projects in Close-out/Final Stage
6. Financial Information

The District is in various stages of planning, designing and construction of several major construction projects as identified in the Educational Plant Survey and the Five-Year Facilities Work Plan as approved by the School Board.

The Capital Projects Status Report also includes Section 4 referred to as “Minor Capital Improvement Projects” and identifies projects at individual schools that were approved in the Capital Outlay Budget.

Section 6 is “Financial Information” and includes the 2016 – 2017 Capital Outlay Budget as approved in September 2016 (page 8 of the Capital Outlay Summary Budget) and the current financial report.

Section 2.

CAPITAL PROJECTS STATUS REPORT – AUGUST 2017

Projects in the Planning Stage

- ◆ **Nease High School Expansion, Renovations and Site Improvements** – An RFQ (Request for Qualifications) was advertised in November 2014 for Professional Architect Consultant Services for the design and future construction of the NHS Expansion, Renovations and Site Improvements Project. Pond & Company was identified as the most qualified firm and a contract for development of a master plan for Nease High School was negotiated and subsequently approved at a Special School Board meeting on January 27, 2015. The master plan was completed and then presented and approved at the April 14th School Board meeting. Subsequently, a Comprehensive Project Design Development contract for the design and execution of the approved master plan for the Nease High School expansion project was negotiated with Pond & Company, and approved at the June 9th School Board meeting. Design work for this comprehensive multi-phase construction project is nearing completion. This project is a multi-phase construction effort which will be administered over an approximate two-year period. The kitchen and dining expansion phase is complete. The 2-Story classroom is substantially complete and was occupied by students and staff for the start of the 2017 – 2018 School Year. Additional phases will follow to complete the Master Plan as funds become available. Budget amendment for the Construction Management effort for execution of additional phases of work was approved at the May School Board Meeting. For more detailed updates on the construction phases please refer to Section 3.

Section 3.

CAPITAL PROJECTS STATUS REPORT – AUGUST 2017

Major Projects Under Construction

- ◆ Nease High School Expansion, Renovations and Site Improvements
- ◆ Picolata Crossing Elementary School (ES “M”)
- ◆ New K-8 School “KK”
- ◆ New K-8 School “LL”



St. Johns County School District Capital Projects Program August 2017 Report

Project: Nease HS Expansion, Renovations, & Site Improvements

Background/Scope: The St. Johns County School District's current Five-Year Work Plan and Educational Plant Survey includes a multi-year, multi-phase project at Nease HS to include an expansion, various renovations and site improvements. This project will include: an approximately 60,000 s.f., 510 student station, 20 classroom addition; kitchen renovation and dining room expansion; new bus canopies; and new student/visitor and entry canopy. Renovations shall include improvements to: Pod C - Admin.; Pod D – Media Center; Pod F – ESE; Pod G - Locker Room expansion and renovation; Pod J - first floor Gymnasium; Pod L – Dining/Kitchen and Pods M & O (classrooms). The project also includes demolition, site preparation, site drainage, site utilities, Ray Road Right-of-Way improvements, new internal roadways, parking expansion, and relocated bus loop as delineated on the approved Master Plan.

Architect: Pond & Company

Contractor: Barton Malow Company

Project Manager: Stan Reddish

Contract Amounts:

GMP Contract Amount:	\$16,745,102.00
Change Order #1	<\$1,713,391.46>
Change Order #2	<\$392,603.97>
Current Contract Amount	\$14,639,106.57

Direct Purchases:

Total Owner Direct Purchases	\$1,543,590.50
Total Tax Savings	\$93,115.43

Critical Dates:

	<u>Kitchen/Cafeteria Phase</u>	<u>Classroom Expansion</u>	<u>Pod Renovation</u>
Contract Award	02/09/16	02/09/16	TBD
Notice to Proceed	04/14/16	06/23/16	
Substantial Completion	08/17/16	07/21/17	
Final Completion	09/15/16	08/07/17	

Schedule:

	100%	99%	Design Complete
--	------	-----	-----------------

Status/Comments: The classroom building addition and related site work, including the renovated student parking lot, is substantially complete and accepted the arrival of students on August 10, 2017. Minor punch list items are ongoing. The new expanded student parking lot, which provides an additional 97 student parking spaces, opened on August 21, 2017.



August 16, 2017

Paul Rose, Executive Director for Facilities & New Construction
St. Johns County School District
3740 International Golf Parkway, Suite 200
St. Augustine, FL 32092

**Re: Nease High School Expansion, Renovations & Site Improvements
St. Johns County School District, Project No. 2015-30
Monthly Status Report–No. 22, August 2017**

Current Status:

Site Development (Phase 2) Design:

1. Interim Student Parking Lot Plan construction is complete to reconfigure the existing student parking and visitor loop for increased parking capacity. Parking lot has been completely sealcoated, restriped, and spaces numbered.
2. Red light and right turn lane at US1 & Ray Road intersection was been completed by SJC Roadway Dept. prior to the start of the school year.
3. Additional site security fencing between the new Classroom Building addition and the existing Media Center Bldg. is pending.

Sitework and Building Construction:

1. New Visitor Loop area has been completed. Retention Pond 2 has been completed, sodded and fenced. Bollards, landscaping, and site benches along the Visitor Loop entrance drive are complete.
2. Concrete paving on the courtyard side of the building is complete. Pedestrian scale light poles are installed, with the light fixtures still pending.
3. Bus loop sidewalk and canopy are complete with the exception of lighting on the canopy. Connecting canopy from Bus Loop canopy to the existing canopy systems are in progress.
4. Building has been completed and Substantial Completion achieved prior to the start of the school year.
5. Pod G (Locker Room) work complete pending the interior doors and frames. Varsity style lockers have been ordered.

Building Design-New Classroom Addition:

1. No design issues pending.

Building Design-Existing Buildings Renovations (Pods C, D, G, J, M & O):

1. Requested Revisions to Bldg. D which include Wrestling Room, and an additional Classroom, in lieu of Itinerant offices, is complete. GMP Pricing on Bldgs. C & D received from CMaR 7-11-17.
2. Requested Revisions to Bldg. C, to simplify and reduce construction costs are ongoing.

Sincerely,



Michael Dennison, AIA
Senior Architect

Cc: Stan Reddish, St Johns County School District
Jim Stege, Pond & Co.
Mark Levine, Pond & Co.
Matt Treadwell, Barton-Malow



Nease High School Expansion, Renovations and Site Improvements

Student Parking Lot

08.08.2017



St. Johns County School District Capital Projects Program August 2017 Report

Project: Picolata Crossing Elementary School (ES “M”)

Background/Scope: The St. Johns County School District’s current Five-Year Work Plan and Educational Plant Survey include a New Elementary school in central St. Johns County. The construction contract award was approved at the June 2016 School Board Meeting. New Elementary School “M” is an approximately 110,000 s.f., 871 student station, 43-classroom two-story building. It was designed and constructed to Green Building Standards, and is located on an 18.5-acre site. Project completion was substantially achieved for the 2017-2018 school year opening.

Architect: SchenkelShultz Architecture

Contractor: STG Contracting Group, Inc.

Project Manager: Stan Reddish

Contract Amounts:	Award Amount:	\$19,599,000.00
	Change Order #1	\$142,462.99
	Change Order #2	<\$4,796,737.73>
	Change Order #3	<\$1,122,510.73>
	Change Order #4	<\$186,048.66>
	Change Order #5	\$84,174.10
	Current Contract Amount	\$13,720,339.97

Direct Purchases:	Total Owner Direct Purchases	\$5,974,164.39
	Total Tax Savings	\$359,616.18

Critical Dates:	Contract Award	06/15/16
	Notice to Proceed	06/27/16
	Substantial Completion	05/10/17
	Final Completion	06/10/17

Schedule: 99%

Status/Comments: Picolata Crossing ES was substantially complete for early arrival of staff and then students on August 10, 2017. First day of school was very successful in all aspects. The punch list is ongoing.



Media Center 8/18/17



Music Room 8/18/17

ARCHITECT'S MONTHLY REPORT 14

TO: STAN REDDISH	FROM: STEPHEN J. CARROLL
FIRM: SJCSD	DATE: AUGUST 15, 2017
EMAIL: Stan Reddish <stan.reddish@stjohns.k12.fl.us>	
SSA #: 1620105	Present:
PROJECT NAME: St. Johns County Picolata Crossing Elementary School ("M")	Stephen J. Carroll Stan Reddish

The following items have taken place for the project to date:

1. The project is approximately ninety-nine percent and is in the final phases of completion with completion of finish work throughout the project including touchups and minor repairs and adjustments
2. Requests for Information have been closed
3. There are no current ASIs in process for the project
4. There has been additional fencing requested to be installed adjacent the covered play area and the bus loop by the district. This is being ordered and scheduled to be installed
5. Additional sod adjacent the playground equipment is being installed. The remaining sod areas are being leveled with sand and rolled.
6. The card access system is currently being completed
7. The test and balance report for the air-conditioning system has been submitted to the design for review.
8. The commissioning of the MEP systems is being performed
9. The completion of the bath rooms at the covered play area is being completed
10. The Substantial Completion Certificate and the punch list for the project has been issued
11. The contractor is performing all repair work as listed on the punch list after hours and on the weekends. This work includes the completion of all electrical, mechanical, and system rooms throughout the campus.
12. All closeout documentation is being worked on

END OF REPORT



Picolata Crossing Elementary School (ES "M")

07.22.2017



St. Johns County School District Capital Projects Program August 2017 Report

Project: K-8 School “KK”

Background/Scope: The St. Johns County School District’s current Five-Year Work Plan and Educational Plant Survey include a new K-8 school in northeast St. Johns County. The project was awarded at the August 2016 School Board Meeting. New K-8 School “KK” is an approximately 190,000 s.f., 1,496 student station, 73-classroom new school on a 37 -acre site and will be constructed to Green Building Standards. Project completion is scheduled for a 2018-2019 school year opening.

Architect: Harvard Jolly Architecture

Contractor: Charles Perry Partners, Inc.

Project Manager: Dennis Ramharry

Contract Amounts:	Award Amount:	\$30,127,000.00
	Change Order #1	\$5,475,000.00 (Award of 2-story academic wing alternate)
	Change Order #2	<\$3,089,834.31>
	Change Order #3	<\$2,676,927.40>
	Current Contract Amount	\$29,835,238.29

Direct Purchases:	Total Owner Direct Purchases	\$5,697,973.81
	Total Tax Savings	\$342,528.43

Critical Dates:	Contract Award	08/09/16
	Notice to Proceed	09/08/16
	Substantial Completion	04/16/18
	Final Completion	05/16/18

Schedule: 45%

Status/Comments: Storm water piping and site grading are progressing. Erection of structural steel and decking is complete. Fireproofing of beams, lightweight concrete roofing, modified bitumen membrane roofing, steel studs, electrical, plumbing and HVAC installation are progressing.



Chillers 8/17/17



Modified Bitumen Roof 8/17/17

STATUS REPORT

DATE: August 15, 2017

TO: Paul Rose, Executive Director for Facilities and Operations

PROJECT: New K-8 School "KK"
St. Johns County School District
St. Augustine, Florida
District Bid #2016-16
Architects Project No. 16017.00
Monthly Status Report No. 12

GENERAL
CONTRACTOR: Charles Perry Partners, Inc.

CURRENT STATUS:

General/Site

1. Work continues on Old Palm Valley Road access re-alignment and is approximately 50% complete.
2. Site storm water installation is complete with the exception of the walkway canopy drainage.
3. Site sanitary is nearing completion.

Bldgs. No. 100/500/1000

1. Building 100 (1 story) roof joists are 95% complete.
2. Floors are complete in the three-story Buildings 500 and 1000.
3. Roof joists and metal decking are complete in Area 1000. Lightweight concrete installation is scheduled for next week.
4. Metal decking is being prepared for lightweight concrete installation.
5. Roof drain plumbing rough-in is complete in Area 1000 roof.
6. Electrical and plumbing rough-in continues.
7. HVAC duct hangers are being installed.

Bldgs. No. 200/400

1. Roof structure is complete.
2. Lightweight concrete installation is complete.
3. Roof drain rough-in is complete.
4. Roofing membrane installation is approximately 50% complete.
5. HVAC duct hangers are in place on the first floor.
6. Metal stud wall framing is complete.
7. Electrical rough-in is approximately 70% complete.

Bldgs. No. 300/600/900

1. Roof structure is complete.
2. Lightweight concrete installation is complete.
3. Roof drain rough-in is complete.
4. Roof membrane installation is approximately 80% complete.
5. HVAC duct hangers are in place on all floors.
6. Electrical rough-in continues.
7. Plumbing rough-in continues.
8. Spray fire proofing is approximately 50% complete.

Bldg. No. 700

1. Structural steel erection is complete.
2. Metal roof decking is complete.
3. Roof drains are roughed-in.
4. Roof is loaded with insulation for lightweight concrete installation.

Bldg. No. 800

1. Structural steel erection is complete.
2. Metal roof decking is complete.
3. Roof drains are roughed-in.
4. Roof is loaded with insulation for lightweight concrete installation.

Chiller Building

1. Tilt wall panels are in place and structurally connected.
2. Light gage metal roof trusses are being put together on the ground and will be lifted all at once by crane.

Dumpster/ Generator Building

1. Tilt wall panels are in place and structurally connected.
2. Roof slab has been re-cast and is in place.

Overall Completion

1. Project is approximately 40% complete.

c: Dennis Ramharry, St. Johns County School District



New K-8 School “KK

School Site

08.19.2017



St. Johns County School District Capital Projects Program August 2017 Report

Project: K-8 School “LL”

Background/Scope: The St. Johns County School District’s current Five-Year Work Plan and Educational Plant Survey include a new K-8 school in northwest St. Johns County. The project was awarded at the September 2016 School Board Meeting. New K-8 School “LL” is an approximately 190,000 s.f., 1,496 student station, 73-classroom new school on a 20-acre site and will be constructed to Green Building Standards. Project completion is scheduled for a 2018-2019 school year opening.

Architect: Harvard Jolly Architecture

Contractor: AFL Construction, LLC

Project Manager: Dennis Ramharry

Contract Amounts:	Award Amount:	\$33,308,000.00
	Change Order #1	<\$6,507,248.35>
	Current Contract Amount	\$26,800,751.65

Direct Purchases:	Total Owner Direct Purchases	\$6,143,105.65
	Total Tax Savings	\$369,297.14

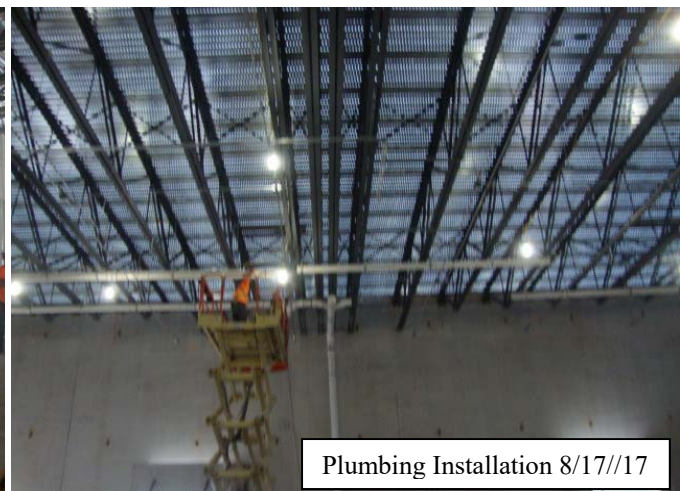
Critical Dates:	Contract Award	09/13/16
	Notice to Proceed	09/28/16
	Substantial Completion	05/15/18
	Final Completion	06/15/18

Schedule: 37%

Status/Comments: Erection of tilt panels in the main building is complete. Tilt wall erection for smaller ancillary facilities is progressing. Structural steel erection, lightweight concrete roofing, steel studs, mechanical, plumbing and HVAC installation are progressing.



Steel Studs 8/17/17



Plumbing Installation 8/17/17

STATUS REPORT

DATE: August 15, 2017

TO: Paul Rose, Executive Director for Facilities and Operations

PROJECT: New K-8 School "LL"
St. Johns County School District
St. Augustine, Florida
District Bid #2016-28
Architects Project No. 16018.00
Monthly Status Report No. 12

GENERAL
CONTRACTOR: AFL Construction, Inc.

CURRENT STATUS:

General/Site

1. Site storm water is complete.
2. Casting beds on the north side of the building are being used as staging areas for structural steel installation. The casting beds will be removed after steel installation is complete.
3. Slabs-on-grade are completed in all areas except the PE Pavilion and Dumpster Area.
4. Site sanitary sewer is complete.
5. Electrical duct bank is in place and tie-in manhole has been inspected and passed.
6. Contractor is awaiting JEA temporary power connection. JEA is stalling setting transformers.

Bldgs. No. 100/500/1000

1. Slab-on-grade is complete.
2. Tilt wall panels are in place with temporary bracing.
3. Roof structure and joist installation are 95% complete in Area 100 (1 story).
4. Structural steel joist clips are in place in Areas 500 and 1000 awaiting structural steel installation.

Bldgs. No. 200/400

1. Tilt wall panels are 100% in place with temporary bracing.
2. Second floor structural steel is complete with approximately 40% of the metal decking installed.
3. Main structural steel roof framing is complete.
4. Roof joist installation is complete and awaiting metal deck installation.

Bldgs. No. 300/600/900

1. Slab-on-grade is complete.
2. Tilt panel erection is complete with all temporary bracing installed.
3. Structural steel installation should begin any day.

Bldg. No. 700

1. Kitchen roof joists and metal decking are complete awaiting lightweight concrete placing.
2. Dining/Multipurpose Room roof joists and metal decking are complete.
3. Teacher Dining metal roof trusses are not installed to date.
4. Roof drains are all roughed-in through the metal decking.

Bldg. No. 800

1. Locker Room/Central Receiving roof joists and metal decking are complete.
2. Gymnasium roof joists and metal decking are complete.
3. Music Room roof joists and metal decking are complete.
4. One-story roof over Media Center has roof joists complete and metal decking installation is ongoing.
5. Roof drains are all roughed-in through the metal decking.

Chiller Building

1. Foundations are in place.
2. Tilt wall panels have been cast and are awaiting erection.

Dumpster/Generator Building

1. Foundations are complete.
2. Tilt wall panels have been cast and are awaiting erection.

Overall Completion

1. Project is approximately 34% complete.

c: Dennis Ramharry, St. Johns County School District



New K-8 School “LL”

School Site

08.19.2017

Section 4.

CAPITAL PROJECTS STATUS REPORT – AUGUST 2017

Minor Capital Improvement Projects

- ◆ Minor Capital Improvements Projects Report Spreadsheet attached

**MINOR CAPITAL IMPROVEMENT PROJECTS
MONTHLY CONSTRUCTION STATUS REPORT
August 2017**

Project	Location	Project Manager/ Engineer	Architect/ Engineer	Contract Award Date	Contractor	Project Amount (*)	Completion Date (Est./Act.)	Projects Status / Remarks
Roof Upgrades	Hartley ES	David Lee	A/R/C	4/11/2017	Atlas Apex Roofing	\$479,000.00	Summer 2017	Upgrades and repairs to these roofing systems to preserve the facility and to extend the roof and facility service life. Contracts awarded at April School Board Meeting. Work on all roof facilities was substantially completed over the summer.
	Mason ES	David Lee	A/R/C	4/11/2017	Atlas Apex Roofing	\$1,051,000.00	Summer 2017	
	Mill Creek ES	David Lee	A/R/C	4/11/2017	J. Register Company	\$173,000.00	Summer 2017	
	Webster	David Lee	A/R/C	4/11/2017	J. Register Company	\$83,000.00	Summer 2017	
	Ketterlinus ES	David Lee	A/R/C	4/11/2017	BBG Contracting Group	\$191,500.00	Summer 2017	
	SJTHS	David Lee	A/R/C	4/11/2017	BBG Contracting Group	\$208,233.00	Summer 2017	
	Transportation	David Lee	A/R/C	4/11/2017	BBG Contracting Group	\$255,416.00	Summer 2017	
Window Replacement Shelter Upgrade Project	Creekside HS	Dennis Ramharry	Bhide & Hall Architects	2/14/17	C.C. Borden Construction, Inc.	\$397,600.00	Summer 2017	Improvements to existing CHS facility in order to provide additional shelter capacity for the county. A contract was awarded to C.C. Borden Construction, Inc. at the February 14, 2017 School Board meeting. Work is underway. Phase I (115 windows) complete. Phase II (additional 48 windows) being coordinated with State and County Departments of Emergency Management.

*Project amount includes all applicable construction contract amounts, architect and engineer fees, and Owner Direct Purchases costs.

Completed / Closed - Out Projects

Project	Location	Project Manager/ Engineer	Architect/ Engineer	Contract Award Date	Contractor	Project Amount (*)	Completion Date (Est./Act.)	Projects Status / Remarks
Dining Addition	Pacetti Bay MS	Stan Reddish	Bhide & Hall Architects	11/8/16	RB Marks Construction	\$750,000.00	Spring 2017	Additional dining space for students to alleviate overcrowding in the existing facilities.
Dining Addition	Valley Ridge Academy	Stan Reddish	Bhide & Hall Architects	11/8/16	DiMare Construction Company	\$500,000.00	Spring 2017	Additional dining space for students to alleviate overcrowding in the existing facilities.

Section 5.

CAPITAL PROJECTS STATUS REPORT – AUGUST 2017

Projects in Close-Out/Final Stage

Completed Projects

- **Crookshank Elementary School Classroom Addition** – (Board Final Acceptance 12-13-16). [Note: for additional information on this project, please refer to the report for the month final acceptance was taken.]

Section 6.

CAPITAL PROJECTS STATUS REPORT – AUGUST 2017

Financial Information

- This information will be provided after the final 2017-2018 Capital Outlay Budget is approved in September.