

# Making the Grade

The Status of School Library Media Centers in the Sunshine State and How They Contribute to Student Achievement affirms that school library media programs positively impact student achievement when the following conditions exist:

- ✓More staffing
- ✓More resources
- ✓Larger per pupil budget
- ✓High Circulation
- ✓More student visits to the media center
- More internet accessible computers**
- ✓An electronic card catalog
- ✓An information literacy skills curriculum
- ✓The school and media center have a web page **with a link on the main school home page.**
- ✓Elementary flexible access

## Accelerated Reader Elementary Statistics

AR	Pass	Test	%>	BkLvl	%<	#Stu	#Test
DCE	19911	24665	75.4	3.9	<b>60</b>	823	29.97
WDH	34335	36877	85.9	3.5	<b>28</b>	670	55.04
RBH	24430	26327	85.1	3.8	<b>45</b>	639	41.20
JCE	17041	18838	81.2	4.1	<b>49</b>	937	20.10
OAM	19572	23474	75.9	3.6	<b>54</b>	531	44.21
MCE	12113	14622	77.1	3.6	<b>59</b>	918	15.93
PVR	47232	54882	80.6	4	<b>47</b>	1129	48.61
SWE	25139	30087	74.5	3.6	<b>69</b>	622	48.37
WCE	39636	44631	82.8	3.6	<b>43</b>	776	57.51
WEB	18152	21028	80.8	3.3	<b>48</b>	452	46.52
AVG	<b>23956</b>	<b>27443</b>	<b>79.89</b>	<b>3.65</b>	<b>53</b>		<b>34.68</b>

**Making the Grade** was the largest school library study ever completed which focused on student achievement and school grades. There were 1715 schools studied. **Those items with a check mark indicate where your school makes the grade. Areas in red are not intended to be punitive, but to assist you in planning for next year.**

Copies of the complete Making the Grade study are available from your school library media center or for checkout from the District Media Services Dept. Please call 547-3947.

To see all school brochures visit:  
[www.stjohns.k12.fl.us/media/rmtg](http://www.stjohns.k12.fl.us/media/rmtg)

# State of the School Library Media Center

## St. Johns County Schools

## Wards Creek ES

June 2009



6555 SR 16

St. Augustine, FL 32092

(904) 547-7400

[www-wce.stjohns.k12.fl.us/media/](http://www-wce.stjohns.k12.fl.us/media/)

Don Campbell, Principal  
 Vance Edeker, Media Specialist  
 Yvonne Swartz, Media Aide

Dr. Joseph Joyner  
 Superintendent of Schools  
 SJCSD

Lou Greco  
 Director for Media Services

## Scheduling of Media Center

The District Media Handbook (pages 5.4 & 5.5) states that the district procedure for elementary schools is to have a flexible access schedule. The Illinois Study indicates that reading scores were 10% higher in schools where the media center functions on a flexible access schedule and the media specialist actively collaborates with the classroom teacher. For more information about flexible access see the American Library Association weblink listed below.

[www.ala.org/aasl/positions/ps\\_flexible.html](http://www.ala.org/aasl/positions/ps_flexible.html)

NetTrekker Meaningful Searches			
As of 6/09	Highest ES	District Average	Our School
	57,595	11092	7278



## Can you find these in your library?

- University trained & certified media specialist
- Library Support Staff
- Students engaged in learning
- Welcoming atmosphere
- Current Book Collection
- Recreational reading opportunities
- Brochures, bookmarks, and style sheets displayed
- New materials displayed
- Locations of materials clearly displayed
- Alternative scheduling options
- Evidence of collaborative planning
- Student & teacher input in library program
- Sufficient technology tools

**Statistics based on data 08/09 SY.**

**STAFFING** (data from FL study)

Personnel	State Avg.	District #	Our School
Professional	0.99	1	1
Clerical	0.97	1	1
NBCT	NA	7	no
University Trained	NA	23/33	yes

**Staffing meets SJCS D recommendations**

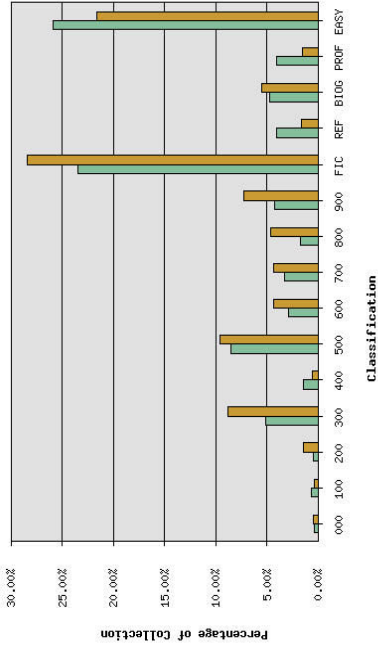
Media PLC Hours Offered	District Avg.	Hours earned	23 Things Web 2.0	FOR-PD
39.5	18.59	23	no	no

Budget	District Avg.	ES	Our School
Total	\$9,127.96		\$9711.26
Total Pupils	728		691
Per Pupil Allocation	\$12.53		\$14.05

*Note: District funding was \$19.00 per pupil for many years. This figure continued to be reduced. It had been hovering around \$17.00 for a few years until the reduction this year. Many libraries also had money removed unexpectedly from their budgets in the spring which reduced the amount above.*

Computers in Media Center (pg 45 FL Study)		
State Avg	District Elem Avg.	Our School
20.79	17.82	9

FCAT Level Circulations					
Levels	1	2	3	4	5
# of Stu.	10	16	53	98	23
Per Stu Circ.	52.7	42.38	51.66	45.78	48.48
ES Avg.	40.77	38.74	38.53	35.69	32.25



Classification: Your Collection (green), Wilson Percentages (orange)

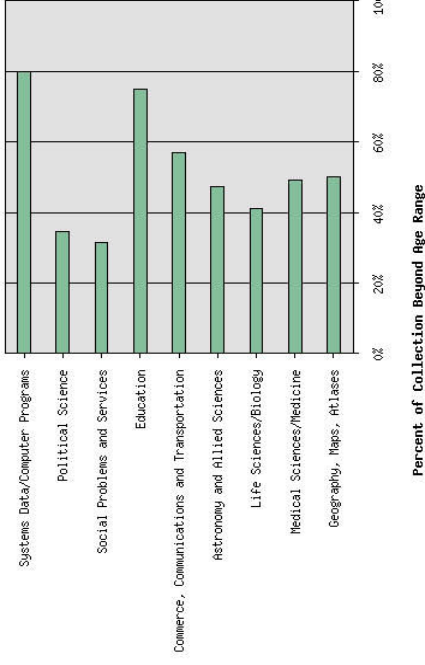
Average Total Book Count (pgs. 55-56 FL Study)				
ES Avg.	National	State	District	Our School
Books per facility	10,992	11,278	15,163	8402
Books per student		13.1	20.74	12.36

*WCE meets SACS standards for libraries with more than 10 books per students.*

Magazines ~ Periodicals (pg. 55 FL Study)		
State Avg.	District Avg.	Our School Avg.
Titles	20.53	20.76
<b>Reading Incentive Programs (pg. 39 FL Study)</b>		
District ES	Our School	
AR/RC	17 schools	
SSYRA/FRA	17 schools	

Average Checkout Per Student (pg. 22 FL Study and Super Summary)		
State Avg.	District Avg.	School Avg.
Per pupil	20.53	55.67

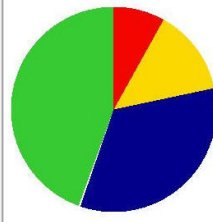
Weekly Circulation (pg. 22 FL Study and Super Summary)		
State Avg.	District Avg.	Our School Avg.
All Materials	1021	1131



**District: St. Johns**

2008 Total Collection Information		
30 years or older	19843	7.74%
20 to 30 years	34665	13.53%
10 to 20 years	86990	33.95%
10 years or newer	114730	44.78%

20.39% of the entire collection was published in the last 5 years.



Interlibrary Loan (pg. 22 FL Study)			
	Borrowed	Loaned	
School WCE	16	6	
SJCS D Avg. ES	12	32	
<b>Hours Per Week Media Center is Open (pg.21 FL Study)</b>			
	State	District	Our School
Before School	2.22	2.48	2.5
During School	29.72	31.63	31.25
After School	2.76	2.36	2.5