

Making the Grade

The Status of School Library Media Centers in the Sunshine State and How They Contribute to Student Achievement affirms that school library media programs positively impact student achievement when the following conditions exist:

- ✓/More staffing
- ✓/More resources
- ✓/Larger per pupil budget
- High Circulation**
- ✓/More student visits to the media center
- ✓/More internet accessible computers
- ✓/An electronic card catalog
- ✓/An information literacy skills curriculum
- ✓/The school and media center have a web page with link on main page of school website

Copies of the complete Making the Grade study are available from your school library media center or for checkout from the District Media Services Dept. Please call 547-3947.

Making the Grade was the largest school library study ever completed which focused on student achievement and school grades. There were 1715 schools studied. **Those items with a check mark indicate where your school makes the grade. Areas in red are not intended to be punitive, but to assist you in planning for next year.**

To see all SJCSd schools "Making the Grade" brochures visit:

www.stjohns.k12.fl.us/depts/media/mtg

State of the School Library Media Center

St. Johns County Schools

Murray Middle School

June 2009



150 North Holmes Blvd.
St. Augustine, FL 32084
(904) 547-8470

www-mms.stjohns.k12.fl.us/media/

Cathy Mittelstadt, Principal 08/09
Tom Schwarm, Principal 09/10
Lorraine Stinson, Media Specialist
Michele Torboli, Media Aide

Dr. Joseph Joyner
Superintendent of Schools
SJCSd

Lou Greco
Director for Media Services

Student Visits		
Highest MS	District MS Avg.	Our School
41,129	18,453	14,500
NetTrekker Meaningful Searches		
As of 6/09	District MS Avg.	Our School
158,550	62,026	26,296



Can you find these in your library?

- University trained & certified media specialist
- Library Support Staff
- Students engaged in learning
- Welcoming atmosphere
- Current Book Collection
- Recreational reading opportunities
- Brochures, bookmarks, and style sheets displayed
- New materials displayed
- Locations of materials clearly displayed
- Alternative scheduling options
- Evidence of collaborative planning
- Student & teacher input in library program
- Sufficient technology tools

Statistics based on data from 2008-2009 SY.

STAFFING (pg.18 FL Study)

Personnel	State Avg	District #	Our School
Professional	0.99	1	1
Clerical	0.97	1	1
NBCT	NA	7	yes
Library University Trained	NA	23/33	yes

Staffing meets SJCSD recommendations.

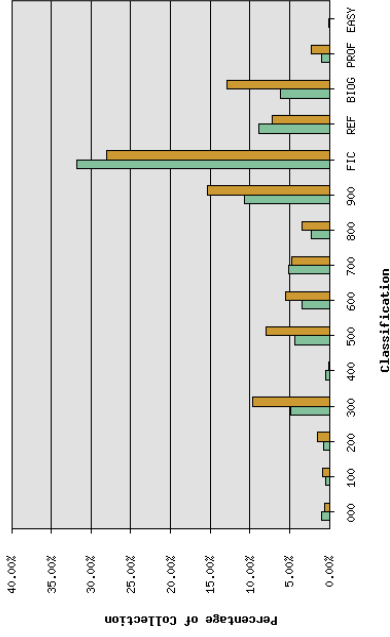
Media PLC Hours Offered	District Avg.	Hours earned	23 Things Web 2.0	FOR:PD
25.5	21.7	23	yes	yes

Budget	District Avg MS	Our School
Total	\$11,433	\$9000
Total Pupils	909	689
Per Pupil Allocation	\$12.00	\$13.06

Note: District funding was \$19.00 per pupil for many years. This figure continued to be reduced. It had been hovering around \$17.00 for a few years until the reduction this year. Many libraries also had money removed unexpectedly from their budgets in the spring which reduced the amount above.

Computers in Media Center (Pg.45 FL Study)		
State Avg	District MS Avg	Our School
31.19	31.28	31

FCAT Level Circulations					
Levels	1	2	3	4	5
# of Stu.	96	122	226	152	74
MMS Per Stu Circ.	22.35	19.52	16.42	14.58	9.18
MS Avg.	25.32	21.91	20.11	20.76	18.46



Legend: Your Collection (green), Wilson Percentages (orange)

Average Total Book Count (pgs. 55, 56, 165 FL Study)				
MS Avg.	National	State MS	District MS	Our School
Books per facility	11,973	13,148	14,383	10,947
Books per student		16	22	15.58

MMS meets SACS standards for libraries with more than 10 books per students.

Magazines ~ Periodicals (pg. 55 FL Study)			
	State MS Avg.	District MS Avg.	Our School Avg.
Titles	54.78	16	3

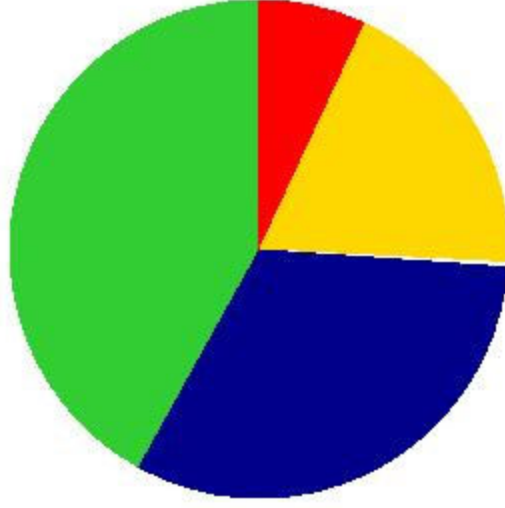
Reading Incentive Programs (pg. 39 FL Study)		
	District MS	Our School
AR/RC	7 schools	✓
SSYRA	7 schools	✓

Average Checkout Per Student (pg. 22 FL Study and Super Summary)			
	State Avg.	District MS	School Avg.
Per pupil	NA	20.82	16.53

Weekly Circulation (pg.22 FL Study and Super Summary)			
	State Avg.	District MS Avg.	Our School Avg.
All Materials	571	579	355

Sunlink Total Collection Information (Including AV)

30 years or older **603** **7.28%**
 20 to 30 years **1565** **18.9%**
 10 to 20 years **2676** **32.32%**
 10 years or newer **3436** **41.5%**



Interlibrary Loan (pg. 22 FL Study)			
	Borrowed	Loaned	
School MMS	6	State Avg.	10
SJCSD MS Avg.	43	1.69	90
		1.69	1.69

Hours Per Week Media Center is Open (pg.21 FL Study)			
	State	District	Our School
Before School	2.22	2.16	2.5
During School	29.72	32.4	30
After School	2.76	4.8	5