

## Making the Grade

The Status of School Library Media Centers in the Sunshine State and How They Contribute to Student Achievement affirms that school library media programs positively impact student achievement when the following conditions exist:

- ✓More staffing
- ✓More resources
- ✓Larger per pupil budget
- ✓High Circulation
- ✓More student visits to the media center

### More internet accessible computers

- ✓An electronic card catalog
- ✓An information literacy skills curriculum
- ✓The school and media center have a web page with link on main page of school website

### Elementary flexible access

**Making the Grade** was the largest school library study ever completed which focused on student achievement and school grades. There were 1715 schools studied.

**Those items with a check mark indicate where your school makes the grade.**

**Areas in red are not intended to be punitive, but to assist you in planning for next year.**

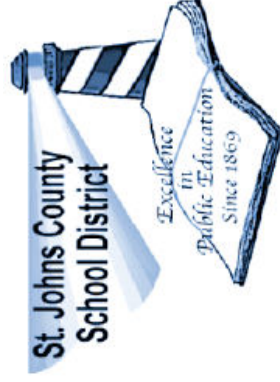
Copies of the complete Making the Grade study are available from your school library media center or for checkout from the District Media Services Dept. Please call 547-3947.

To see all school brochures visit:  
[www.stjohns.k12.fl.us/media/mtg](http://www.stjohns.k12.fl.us/media/mtg)

## Scheduling of Media Center

The District Media Handbook (pages 5.4 & 5.5) states that the district procedure for elementary schools is to have a flexible access schedule. The Illinois Study indicates that reading scores were 1.0% higher in schools where the media center functions on a flexible access schedule and the media specialist actively collaborates with the classroom teacher. For more information about flexible access see the American Library Association weblink listed below.  
[www.ala.org/aasl/positions/ps\\_flexible.html](http://www.ala.org/aasl/positions/ps_flexible.html)

NetTrekker Meaningful Searches			
As of 6/09	Highest ES	District Average	Our School
	57,595	11,092	13,791



## Can you find these in your library?

- University trained & certified media specialist
- Library Support Staff
- Students engaged in learning
- Welcoming atmosphere
- Current Book Collection
- Recreational reading opportunities
- Brochures, bookmarks, and style sheets displayed
- New materials displayed
- Locations of materials clearly displayed
- Alternative scheduling options
- Evidence of collaborative planning
- Student & teacher input in library program
- Sufficient technology tools

# State of the School Library Media Center

## St. Johns County Schools

## Hickory Creek

June 2009



235 Hickory Creek Trail.  
 St. Johns, FL 32259  
 (904) 547-7450

[www-hce.stjohns.k12.fl.us/media/](http://www-hce.stjohns.k12.fl.us/media/)

Paul Goricki, Principal  
 Michaelleen Chalut, Media Specialist  
 Susie Ledford, Media Aide

Dr. Joseph Joyner  
 Superintendent of Schools  
 SJCS

Lou Greco  
 Director for Media Services

**Statistics based on data 2008-2009 SY.**

**STAFFING** (pg. 18 FL Study)

Personnel	State Avg	District #	Our School
Professional	0.99	1	1
Clerical	0.97	1	1
NBCT	NA	7	no
Library University Trained	NA	23/33	no

**Staffing meets SJCS D recommendations.**

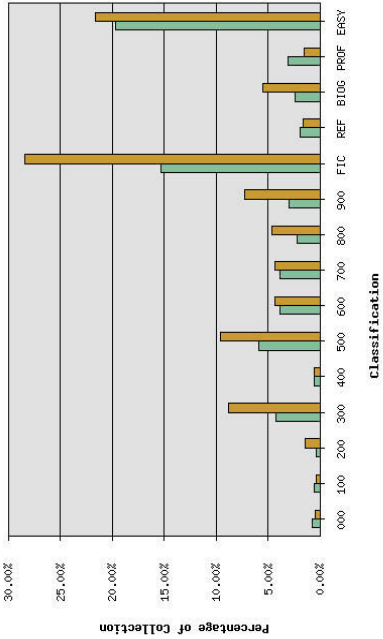
Media PLC Hours Offered	District Avg.	Hours earned	23 Things Web 2.0	FOR-PD
23	18.59	19	no	no

Budget	District Avg. ES	Our School
Total	\$9127.96	\$7886.00
Total Pupils	893	728
Per Pupil Allocation	\$12.53	\$12.43

*Note: District funding was \$19.00 per pupil for many years. This figure continued to be reduced. It had been hovering around \$17.00 for a few years until the reduction this year. Many libraries also had money removed unexpectedly from their budgets in the spring which reduced the amount above.*

Computers in Media Center (Pg. 45 FL Study)	District Elem Avg.	Our School
20.79	17.82	16

FCAT Level Circulations (Pg 45 FL Study)	1	2	3	4	5
Levels # of stu.	16	5	57	88	55
HCE Per Stu Circ.	35.38	24.60	29.74	35.31	34.75
ES Avg.	40.77	38.74	38.53	35.69	32.25



Legend: Your Collection (green), Million Percentages (orange)

Average Total Book Count (pgs. 55-56 FL Study)				
ES Avg.	Na-tional	State	District	Our School
Books per facility	10,992	11,278	15,163	14,908
Books per student		13.1	20.74	24.85

**HCE meets SACS standards for libraries with more than 10 books per students.**

Magazines ~ Periodicals (pg. 55 FL Study)			
State Avg.	District ES Avg.	Our School Avg.	Titles
20.53	20.76	17	

Reading Incentive Programs (pg. 39 FL Study)			
	District ES	Our School	
AR/RC	18 schools	✓	
SSYRA/FRA	18 schools	✓✓	

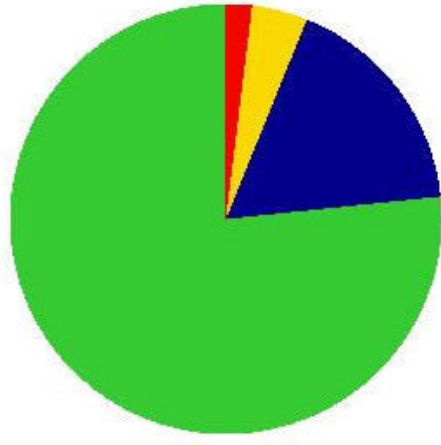
Average Checkout Per Student (pg. 22 FL Study and Super Summary)			
State Avg.	District Avg.	School Avg.	Per pupil
20.53	38.60	33.46	

Weekly Circulation (pg. 22 FL Study and Super Summary)			
State Avg.	District Avg.	Our School Avg.	All Materials
1061	783	622	

School: Hickory Creek ES  
District: St. Johns

2008 Total Collection Information			
30 years or older	92	2.33%	
20 to 30 years	156	3.94%	
10 to 20 years	686	17.35%	
10 years or newer	3021	76.38%	

52.59% of the entire collection was published in the last 5 years.



Interlibrary Loan (pg. 22 FL Study)			
	Borrowed	Loaned	
School HCE	0	State Avg. 5	State Avg.
SJCS D Avg. ES	12	.89	32
			1.17

Hours Per Week Media Center is Open (pg. 21 FL Study)			
	State	District	Our School
Before School	2.22	2.48	3.75
During School	29.72	31.63	30
After School	2.76	2.36	5