

Making the Grade

The Status of School Library Media Centers in the Sunshine State and How They Contribute to Student Achievement affirms that school library media programs positively impact student achievement when the following conditions exist:

- ✓/More staffing
- ✓/More resources
- ✓/Larger per pupil budget
- ✓/High Circulation
- ✓/More student visits to the media center
- ✓/More internet accessible computers
- ✓/An electronic card catalog
- ✓/An information literacy skills curriculum
- ✓/The school and media center have a web page With link on main page of school website

Copies of the complete Making the Grade study are available from your school library media center or for checkout from the District Media Services Dept. Please call 547-3947.

Making the Grade was the largest school library study ever completed which focused on student achievement and school grades. There were 1715 schools studied. **Those items with a check mark indicate where your school makes the grade. Areas in red are not intended to be punitive, but to assist you in planning for next year.**

Student Visits			
Highest MS	District MS Avg.	Our School	Our School
41,129	18453	10,665	
NetTrekker Meaningful Searches			
As of 6/09	Highest MS	District MS Avg.	Our School
	158,550	62,026	156,143

World Book Online



Can you find these in your library?

- University trained & certified media specialist
- Library Support Staff
- Students engaged in learning
- Welcoming atmosphere
- Current Book Collection
- Recreational reading opportunities
- Brochures, bookmarks, and style sheets displayed
- New materials displayed
- Locations of materials clearly displayed
- Alternative scheduling options
- Evidence of collaborative planning
- Student & teacher input in library program
- Sufficient technology tools

State of the School Library Media Center

St. Johns County Schools

Fruit Cove Middle School

June 2009



3180 Race Track Rd.
St. Johns, FL 32259
(904) 547-7880

www-fcms.stjohns.k12.fl.us/media/

Steve McCormick, Principal
Jennifer Jaeger, Media Specialist

Congratulations
2008-09 Fruit Cove Teacher of the Year
Carol Scott, Media Aide

Dr. Joseph Joyner
Superintendent of Schools
SJCS

Lou Greco
Director for Media Services

Statistics based on data from 2007-2008 SY.

STAFFING (pg.18 FL Study)

Personnel	State Avg	District #	Our School
Professional	1.34	1	1
Clerical	1.31	1	1
NBCT	NA	7	yes
Library University Trained	NA	23/33	yes

Staffing meets SJCS D recommendations.

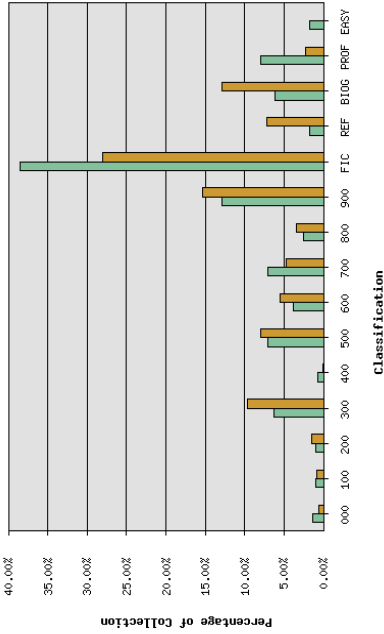
Media PLC Hours Offered	District Avg.	Hours earned	23 Things Web 2.0	FOR-PD
25.5	21.7	11.50	no	yes

Budget	District Avg. MS	Our School
Total	\$11,433	\$16,264
Total Pupils	909	1252
Per Pupil Allocation	\$12.00	\$12.99

Note: District funding was \$19.00 per pupil for many years. This figure continued to be reduced. It had been hovering around \$17.00 for a few years until the reduction this year. Many libraries also had money removed unexpectedly from their budgets in the spring which reduced the amount above.

Computers in Media Center (Pg. 45 FL Study)	District MS Avg.	Our School
31.19	31.28	40

Levels	FCAT Level Circulations				
	1	2	3	4	5
# of Stu.	36	96	363	437	219
FCMS Per Stu Circ.	16.41	15.69	10.53	11.92	11.33
MS Avg.	25.32	21.91	20.11	20.76	18.46



Classification: Your Collection (green), Wilson Percentages (orange)

Average Total Book Count (pgs. 55,56, 165 FL Study)				
MS Avg.	National	State MS	District MS	Our School
Books per facility	11,973	13,148	14,383	15,029
Books per student		16	22	12

FCMS meets SACS standards for libraries with more than 10 books per students.

Magazines ~ Periodicals (pg. 55 FL Study)			
	State MS Avg.	District MS Avg.	Our School
Titles	54.78	16	15

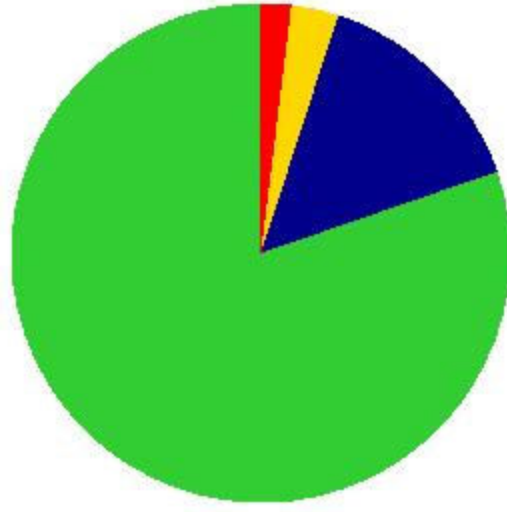
Reading Incentive Programs (pg. 39 FL Study)		
	District MS	Our School
AR/RC	7 schools	
SSYRA	7 schools	✓

Average Checkout Per Student (pg. 22 FL Study and Super Summary)			
	District MS	School Avg.	
Per pupil	NA	20.82	17.62

Weekly Circulation (pg. 22 FL Study and Super Summary)			
	State Avg.	District MS Avg.	Our School Avg.
All Materials	571	579	689

Sunlink Total Collection Information (Including AV)

- 30 years or older** 136 2.39%
- 20 to 30 years** 147 2.58%
- 10 to 20 years** 827 14.51%
- 10 years or newer** 4590 80.53%



Interlibrary Loan (pg. 22 FL Study)			
	Borrowed	Loaned	
School FCMS	0	State Avg.	60
SJCS D MS Avg.	43	1.69	90

Hours Per Week Media Center is Open (pg.21 FL Study)			
	State	District	Our School
Before School	2.77	2.16	2.22
During School	32.07	32.4	29.72
After School	1.83	4.8	2.67